



Chipsmall Limited consists of a professional team with an average of over 10 year of expertise in the distribution of electronic components. Based in Hongkong, we have already established firm and mutual-benefit business relationships with customers from,Europe,America and south Asia,supplying obsolete and hard-to-find components to meet their specific needs.

With the principle of "Quality Parts,Customers Priority,Honest Operation,and Considerate Service",our business mainly focus on the distribution of electronic components. Line cards we deal with include Microchip,ALPS,ROHM,Xilinx,Pulse,ON,Everlight and Freescale. Main products comprise IC,Modules,Potentiometer,IC Socket,Relay,Connector.Our parts cover such applications as commercial,industrial, and automotives areas.

We are looking forward to setting up business relationship with you and hope to provide you with the best service and solution. Let us make a better world for our industry!



Contact us

Tel: +86-755-8981 8866 Fax: +86-755-8427 6832

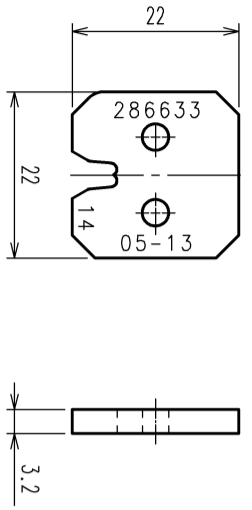
Email & Skype: info@chipsmall.com Web: www.chipsmall.com

Address: A1208, Overseas Decoration Building, #122 Zhenhua RD., Futian, Shenzhen, China

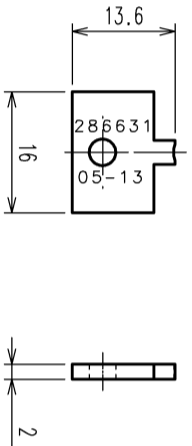


TO	PE
----	----

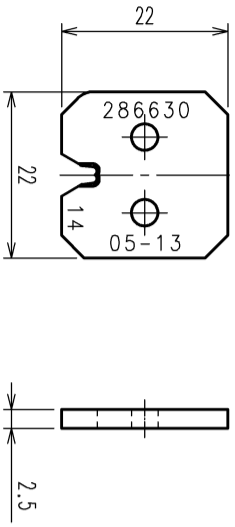
INSULATION CRIMPER



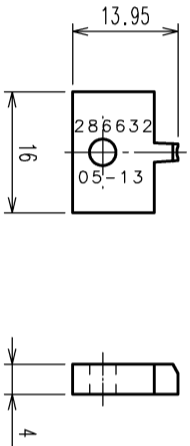
INSULATION ANVIL



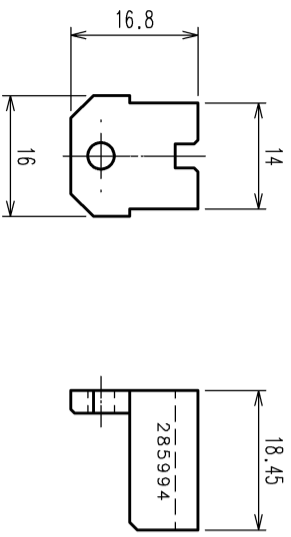
WIRE CRIMPER



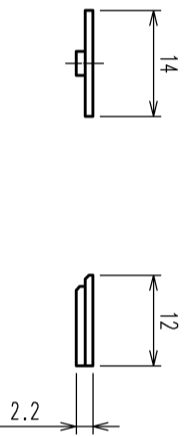
WIRE ANVIL



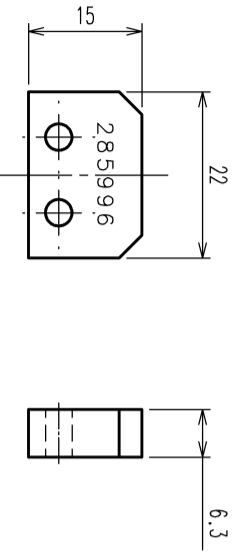
CONTACT HOLDER A



CONTACT HOLDER C



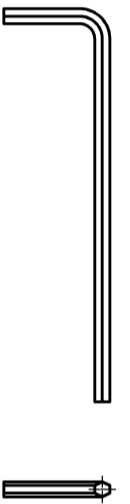
CRIMPER SPACER



SCREW(M2x5) : TWO



HEXAGON WRENCH(M2)



COUNT	DESCRIPTION OF REVISIONS	BY	CHKD	DATE	COUNT	DESCRIPTION OF REVISIONS	BY	CHKD	DATE
△				..	△				..
△				..	△				..

Notes 1. This drawing shows PQ50A-14(2517) (CL0250-1022-1).

2. The following table shows the specification of this unit.

INSULATION CRIMPER	ONE
WIRE CRIMPER	ONE
INSULATION ANVIL	ONE
WIRE ANVIL	ONE
CONTACT HOLDER A	ONE
CONTACT HOLDER C	ONE
CRIMPER SPACER	ONE
SCREW(M2x5)	TWO
HEXAGON WRENCH(M2)	ONE

NO.	MATERIAL	FINISH, REMARKS	NO.	MATERIAL	FINISH, REMARKS
2			4		
1			3		

CODE NO. (OLD)	CL	DRAWN	DESIGNED	CHECKED	APPROVED	RELEASED
		H. KUDO 13.5.20	M. TAKAHASHI 13.5.20	S. OIZUMI 13.5.20	T. ITO 13.5.20	..

SCALE	DRAWING NO.	PART NO.
1 : 1	EDC3-276377	PQ50A-14(2517)
UNITS	CODE NO.	
mm	HRS	CL250-1022-1
	HIROSE ELECTRIC CO., LTD	