



Chipsmall Limited consists of a professional team with an average of over 10 year of expertise in the distribution of electronic components. Based in Hongkong, we have already established firm and mutual-benefit business relationships with customers from,Europe,America and south Asia,supplying obsolete and hard-to-find components to meet their specific needs.

With the principle of "Quality Parts,Customers Priority,Honest Operation,and Considerate Service",our business mainly focus on the distribution of electronic components. Line cards we deal with include Microchip,ALPS,ROHM,Xilinx,Pulse,ON,Everlight and Freescale. Main products comprise IC,Modules,Potentiometer,IC Socket,Relay,Connector.Our parts cover such applications as commercial,industrial, and automotives areas.

We are looking forward to setting up business relationship with you and hope to provide you with the best service and solution. Let us make a better world for our industry!



Contact us

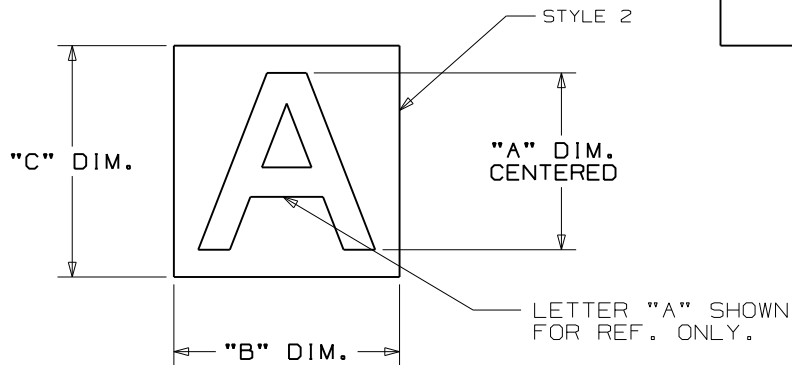
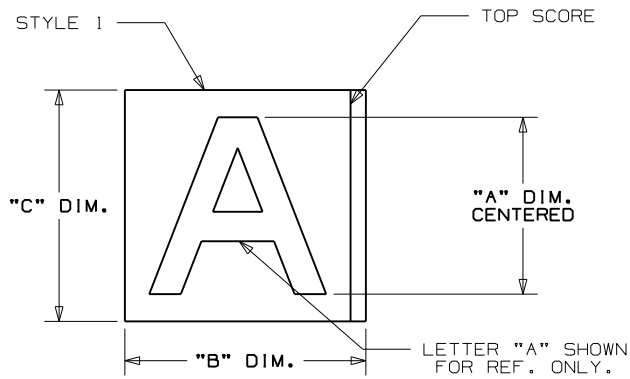
Tel: +86-755-8981 8866 Fax: +86-755-8427 6832

Email & Skype: info@chipsmall.com Web: www.chipsmall.com

Address: A1208, Overseas Decoration Building, #122 Zhenhua RD., Futian, Shenzhen, China



THIS COPY IS PROVIDED ON A RESTRICTED BASIS AND IS NOT TO BE USED IN ANY WAY DETRIMENTAL TO THE INTERESTS OF PANDUIT CORP.



PART NUMBERS									MARKERS PER CARD	CARDS PER PKG	LEGEND
(STYLE 1) BLACK ON YELLOW	(STYLE 2) YELLOW ON BLACK	(STYLE 2) YELLOW ON BLACK	(STYLE 1) BLACK ON YELLOW	(STYLE 2) YELLOW ON BLACK	(STYLE 2) YELLOW ON BLACK	(STYLE 1) BLACK ON YELLOW	(STYLE 2) YELLOW ON BLACK	(STYLE 2) YELLOW ON BLACK			
"A" DIM. (CENTERED)	"B" DIM.	"C" DIM.	"A" DIM. (CENTERED)	"B" DIM.	"C" DIM.	"A" DIM. (CENTERED)	"B" DIM.	"C" DIM.			
1.00 (25.4)	1.13 (28.7)	1.63 (41.4)	1.50 (38.1)	1.38 (35.1)	1.88 (47.8)	2.50 (63.5)	1.75 (44.5)	2.88 (73.2)			
PRL100BY-0 THRU PRL100BY-9	PRL150YB-0 THRU PRL150YB-9			PRL250YB-0 THRU PRL250YB-9			1	25	0 THRU 9		
PRL100BY-A THRU PRL100BY-Z	PRL150YB-A THRU PRL150YB-Z			PRL250YB-A THRU PRL250YB-Z			1	25	A THRU Z		
PRL100BY-DSH (SEE NOTE 2)	PRL150YB-DSH (SEE NOTE 3)			PRL250YB-DSH (SEE NOTE 4)			1	25	- (DASH)		
PRL100BY-BLNK	N/A			N/A			1	25	(BLANK)		
PRL100BY-18KIT	N/A			N/A			1	900	0 THRU 9, A THRU Z, L, P, R, S		
PRL100BY-36KIT (SEE NOTE 2)	N/A			N/A			1	950	0 THRU 9, A THRU Z, - (DASH), BLANK		

- NOTES:
 1. MILLIMETERS ARE IN ().
 2. "A" DIM. FOR DASH IS .375.
 3. "A" DIM. FOR DASH IS .343.
 4. "A" DIM. FOR DASH IS .50.

CAD FILENAME/LAYERS 100923NC_DC_C10672/01D

PANDUIT CORP. TINLEY PARK, ILLINOIS

CUSTOMER DRAWING
 PRL***-* REFLECTIVE MARKERS

UNLESS OTHERWISE SPECIFIED,
 DIMENSIONAL TOLERANCES ARE:
 (.X) ± .12 (.XXX) ± .025
 (.XX) ± .062 ANGLES ±



UNLESS OTHERWISE SPECIFIED,
 ALL DIMENSIONS ARE GIVEN
 IN INCHES, THIRD ANGLE PROJECTION.

DRAWN BY
 RVU

MAT'L:

SCALE
 NTS

DATE
 3/25/08

GMRS*
 VINYL

DRAWING NO.

C10672

DWG
 A
 SIZE

REV	DATE	BY	CHK	DESCRIPTION	ECN	R	CUST	SUP
3	6/15/09	RVU		1.13 was 1.130, 1.38 was 1.380, & 1.75 was 1.750. Remove 5°.	5768	R		
2	6/04/09			VOID				
1	11/21/08	RVU		ADD NOTES 2, 3, 4. ADD "SEE NOTE 2, 3, 4, 5" ON TABLE.	5613	R		
0	3/25/08	RVU		DRAWING RELEASE	5368	R		