



Chipsmall Limited consists of a professional team with an average of over 10 year of expertise in the distribution of electronic components. Based in Hongkong, we have already established firm and mutual-benefit business relationships with customers from,Europe,America and south Asia,supplying obsolete and hard-to-find components to meet their specific needs.

With the principle of "Quality Parts,Customers Priority,Honest Operation,and Considerate Service",our business mainly focus on the distribution of electronic components. Line cards we deal with include Microchip,ALPS,ROHM,Xilinx,Pulse,ON,Everlight and Freescale. Main products comprise IC,Modules,Potentiometer,IC Socket,Relay,Connector.Our parts cover such applications as commercial,industrial, and automotives areas.

We are looking forward to setting up business relationship with you and hope to provide you with the best service and solution. Let us make a better world for our industry!



Contact us

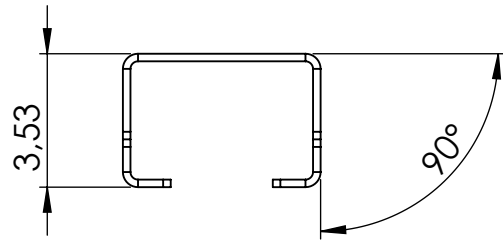
Tel: +86-755-8981 8866 Fax: +86-755-8427 6832

Email & Skype: info@chipsmall.com Web: www.chipsmall.com

Address: A1208, Overseas Decoration Building, #122 Zhenhua RD., Futian, Shenzhen, China

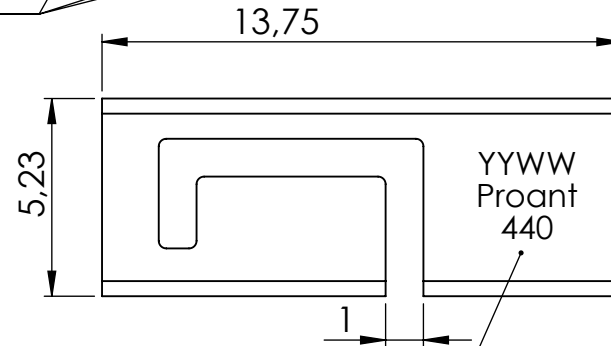
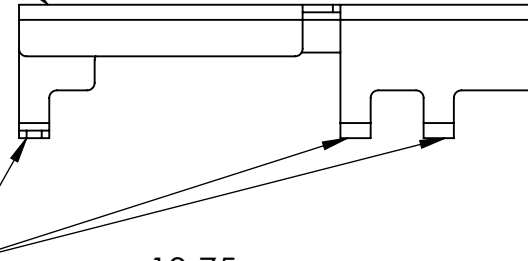


Reel data	
Part Name	OnBoard SMD 2400
Part nr	PRO-OB-440
Date	YYYY-MM-DD
Lot Code	YYWW
QTY	pcs
RoHs	Yes
MSL	1



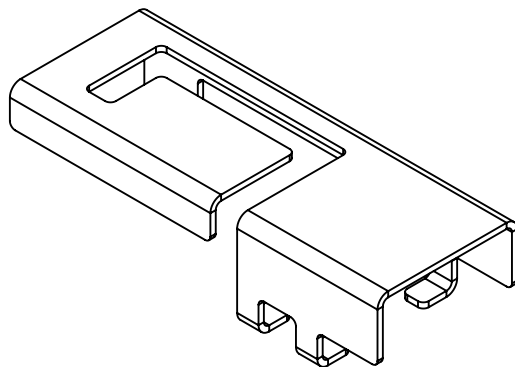
Burr free side

Level difference between pins < 0.08 mm



NOTE: Measure dimensions stated in the drawing and enclose measurement report in the delivery.

Marking, Lot code[YYWW], year week. 2014 week 35 gives lot code [1435].



MATERIAL:
C7521 0.2 mm

FINISH:
N/A

WEIGHT (g):
0,18

This drawing and any information or descriptive material set out on it are the confidential and copy right property of Proant AB and MUST NOT BE DISCLOSED, COPIED, LOANED in the whole part or used for any purpose without the written permission of Proant AB.

FIRST ANGLE PROJECTION

DO NOT SCALE DRAWING



SCALE:5:1

UNLESS OTHERWISE SPECIFIED:
DIMENSIONS ARE IN MILLIMETERS
SURFACE FINISH: 0.8 um
TOLERANCES:
LINEAR: 0.2
ANGULAR: 0.15 deg

COMPANY CONFIDENTIAL

LEGAL OWNER:



PROANT AB
GRÄDDVÄGEN 15A
906 20 UMEÅ
SWEDEN

DESCRIPTION:
OnBoard SMD 2400

DRAWN BY:
S.Westin

DRAWN DATE:
2017-08-15

CHECKED/APPROVED BY:
T.Kärman

CHECKED/APPROVED DATE:
2017-08-15

PROANT TOOL NO:
EXTOOL-008

DWG NO:
440-02-170815

PART NO:
PRO-OB-440

A4
SHEET 1 OF 1