



Chipsmall Limited consists of a professional team with an average of over 10 year of expertise in the distribution of electronic components. Based in Hongkong, we have already established firm and mutual-benefit business relationships with customers from,Europe,America and south Asia,supplying obsolete and hard-to-find components to meet their specific needs.

With the principle of “Quality Parts,Customers Priority,Honest Operation,and Considerate Service”,our business mainly focus on the distribution of electronic components. Line cards we deal with include Microchip,ALPS,ROHM,Xilinx,Pulse,ON,Everlight and Freescale. Main products comprise IC,Modules,Potentiometer,IC Socket,Relay,Connector.Our parts cover such applications as commercial,industrial, and automotives areas.

We are looking forward to setting up business relationship with you and hope to provide you with the best service and solution. Let us make a better world for our industry!



## Contact us

Tel: +86-755-8981 8866 Fax: +86-755-8427 6832

Email & Skype: info@chipsmall.com Web: www.chipsmall.com

Address: A1208, Overseas Decoration Building, #122 Zhenhua RD., Futian, Shenzhen, China



## **EASY-MARK™ Labeling Software**

Generate labels quickly and easily with *EASY-MARK™* Labeling Software from *PANDUIT*. Using *EASY-MARK™* software saves time and money in creating labels for wire/cable marking, data communications equipment, safety/facility ID and components. Expanded features include data import and image import. *EASY-MARK™* software delivers functionality and ease of use for all of your labeling needs.



### **Key Features**

### **Benefits**

<b>WYSIWYG (What You See Is What You Get)</b>	Program allows you to see labels on-screen as they will appear when printed
<b>Quick text entry</b>	Enter text on individual labels or over an entire range
<b>Data file import</b>	Reduce time and errors by importing data previously created in EXCEL <sup>^</sup> (.XLS) files or comma separated value (.CSV) files onto labels
<b>Graphic file import</b>	Insert symbols such as your company logo or .JPG, .BMP, .WMF and .GIF files onto labels
<b>Image library</b>	Choose from over 100 standard symbols for electrical and data communications applications
<b>All PANDUIT label formats are preloaded and ready to use</b>	Labels for thermal transfer, dot matrix, laser and ink jet, including † <i>ULTIMATE ID™</i> Network Labeling System, can be created quickly and easily
<b>Supports most WINDOWS<sup>^</sup> printer drivers</b>	Print labels with standard thermal transfer, dot matrix, laser and ink jet, including <i>PANDUIT</i> thermal transfer desktop printers
<b>Alpha and numeric serializations</b>	Quickly creates incremented legend lists automatically

† For additional information on *ULTIMATE ID™*, contact Customer Service and ask for **SA-IDCB01**.

### **System Requirements**

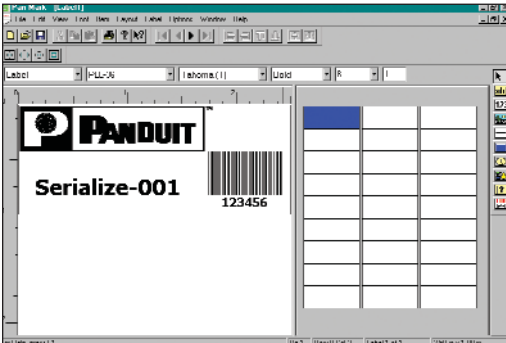
- Processor with 64MB hard drive space and 32MB RAM
- Mouse or compatible pointing device
- CD-ROM Drive

Part Number	Description	Std. Pkg. Qty.
PROG-EMCD	<i>EASY-MARK™</i> Labeling Software, CD-ROM, compatible with WINDOWS <sup>^</sup> 98, Me, 2000, NT 4.x and XP	1

<sup>^</sup> WINDOWS and EXCEL are registered trademarks of Microsoft Corp in the United States and other countries.

## Related Products

### PAN-MARK® 2.5 for WINDOWS^ Labeling Software



### PAN-MARK® 2.5 Labeling Software Ordering Information

Part Number	Description	Std. Pkg. Qty.
PROG-WIN2CD	PAN-MARK® Labeling Software, CD-ROM, compatible with WINDOWS^ 98, Me, 2000, NT 4.x and XP	1

For more advanced labeling needs, **PANDUIT** also offers \***PAN-MARK® 2.5 Labeling Software.**

- Create bar codes
- Date, time and data input fields
- Reduce time and errors by using ODBC (Open Data-Base Connectivity) to import data from EXCEL^ (.XLS), and ACCESS^ (.MDB) and text files (.TXT) directly onto PAN-MARK® label formats
- Contains an image library of common electrical, safety and data communications symbols
- Import .BMP graphic images onto a label — add your own company logo to labels
- Supports most WINDOWS^ printer drivers and is compatible with standard desktop printers including PANDUIT thermal transfer desktop printers

^ WINDOWS, EXCEL and ACCESS are registered trademarks of Microsoft Corp. in the United States and other countries.

\* For additional information on PAN-MARK® Labeling Software, contact Customer Service and ask for SA-IDCB1043A.

## Labeling Software Comparison Chart

### EASY-MARK™ or PAN-MARK® Software ... Which program is right for you?

Feature	EASY-MARK™ Software	PAN-MARK® 2.5 Software
Minimum system requirements	64 MB Hard Drive and 32 MB RAM	30 MB Hard Drive and 8 MB RAM
WYSIWYG program	Yes	No
Serialization	Yes	Yes
Cut, copy and paste edit functions	Yes	Yes
Text rotation and alignment	Yes	Yes
Wire marker mode	Yes	Yes
Automatic legend repeat function	Yes	No
Database import	Yes	Yes
Bar coding	No	Yes
Image library	Yes	Yes
Image import	Yes	Yes
Date/time stamp	No	Yes
Pipe marker mode	No	Yes
†ULTIMATE ID™ System Label Formats	Yes	Yes

†For additional information on ULTIMATE ID™, contact Customer Service and ask for SA-IDCB01.

#### WORLDWIDE SUBSIDIARIES AND SALES OFFICES

PANDUIT CANADA  
Markham, Ontario  
cs-cdn@panduit.com  
Phone: 800.777.3300

PANDUIT EUROPE LTD.  
London, UK  
cs-emea@panduit.com  
Phone: 44.20.8601.7200

PANDUIT ASIA PACIFIC PTE. LTD.  
Republic of Singapore  
cs-ap@panduit.com  
Phone: 65.6379.6700

PANDUIT JAPAN  
Tokyo, Japan  
cs-japan@panduit.com  
Phone: 81.3.3767.7011

PANDUIT LATIN AMERICA  
Jalisco, Mexico  
cs-la@panduit.com  
Phone: 52.333.666.2501

PANDUIT AUSTRALIA PTY. LTD.  
Victoria, Australia  
cs-aus@panduit.com  
Phone: 61.3.9794.9020

For a copy of PANDUIT product warranties, log on to [www.panduit.com/warranty](http://www.panduit.com/warranty)



For more information or to request a catalog

[www.panduit.com](http://www.panduit.com)

cs@panduit.com • 800-777-3300

Copyright © PANDUIT Corp. All rights reserved.  
Printed in U.S.A.

SA-IDCB18

Replaces SA-IDCB02

08/2004