



Chipsmall Limited consists of a professional team with an average of over 10 year of expertise in the distribution of electronic components. Based in Hongkong, we have already established firm and mutual-benefit business relationships with customers from,Europe,America and south Asia,supplying obsolete and hard-to-find components to meet their specific needs.

With the principle of “Quality Parts,Customers Priority,Honest Operation,and Considerate Service”,our business mainly focus on the distribution of electronic components. Line cards we deal with include Microchip,ALPS,ROHM,Xilinx,Pulse,ON,Everlight and Freescale. Main products comprise IC,Modules,Potentiometer,IC Socket,Relay,Connector.Our parts cover such applications as commercial,industrial, and automotives areas.

We are looking forward to setting up business relationship with you and hope to provide you with the best service and solution. Let us make a better world for our industry!



Contact us

Tel: +86-755-8981 8866 Fax: +86-755-8427 6832

Email & Skype: info@chipsmall.com Web: www.chipsmall.com

Address: A1208, Overseas Decoration Building, #122 Zhenhua RD., Futian, Shenzhen, China

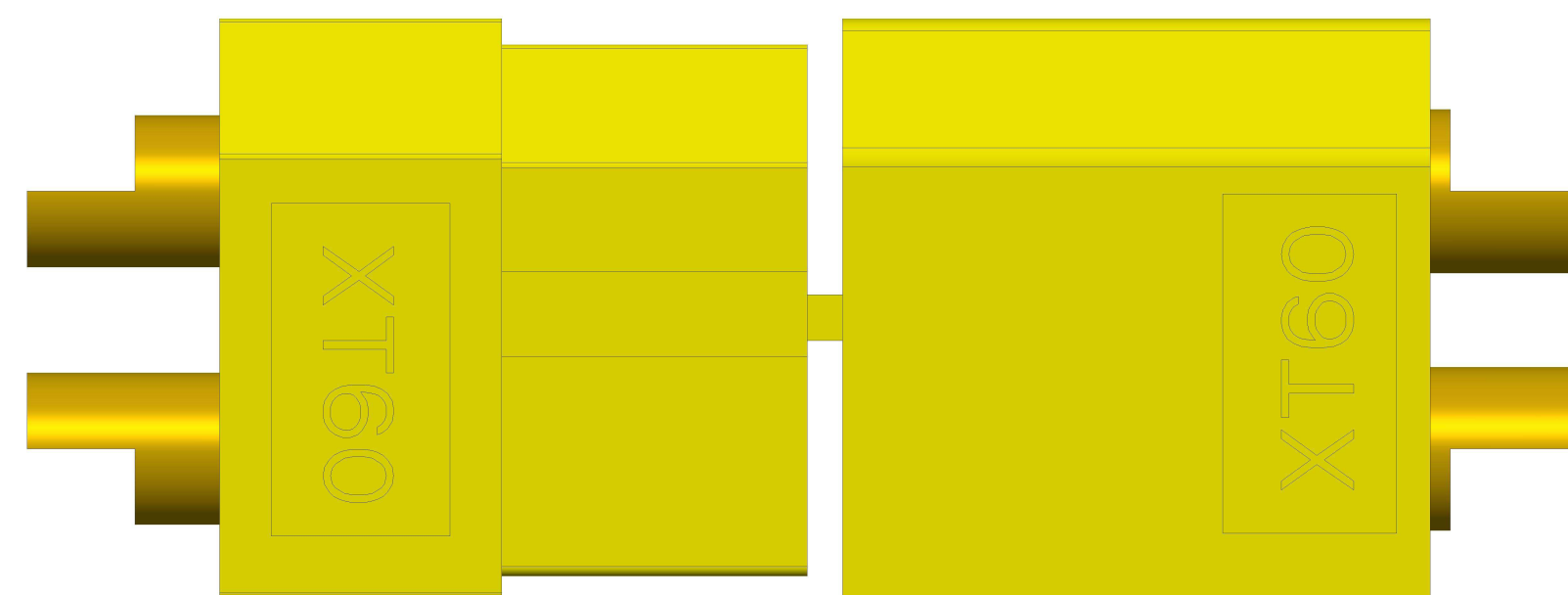
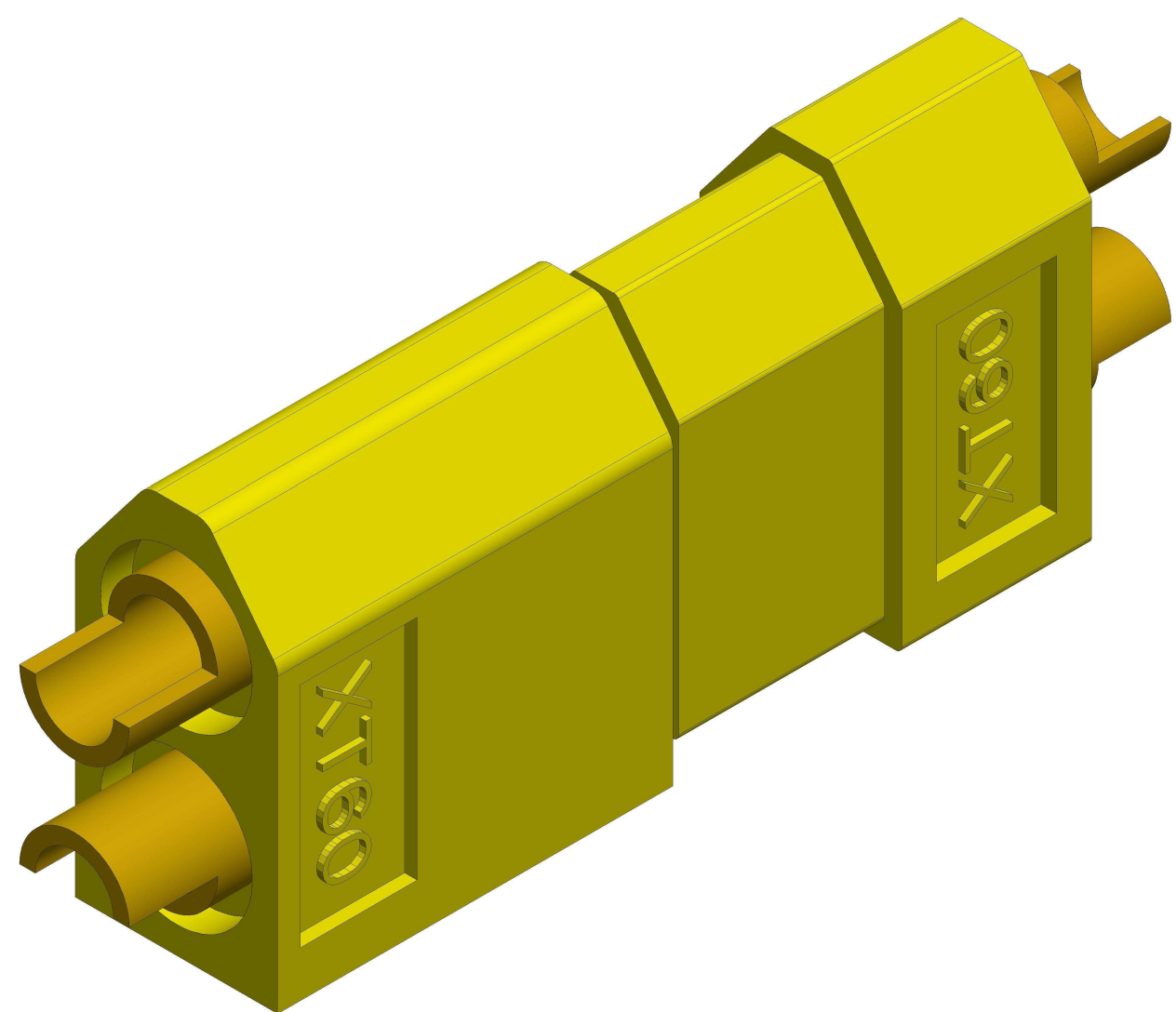
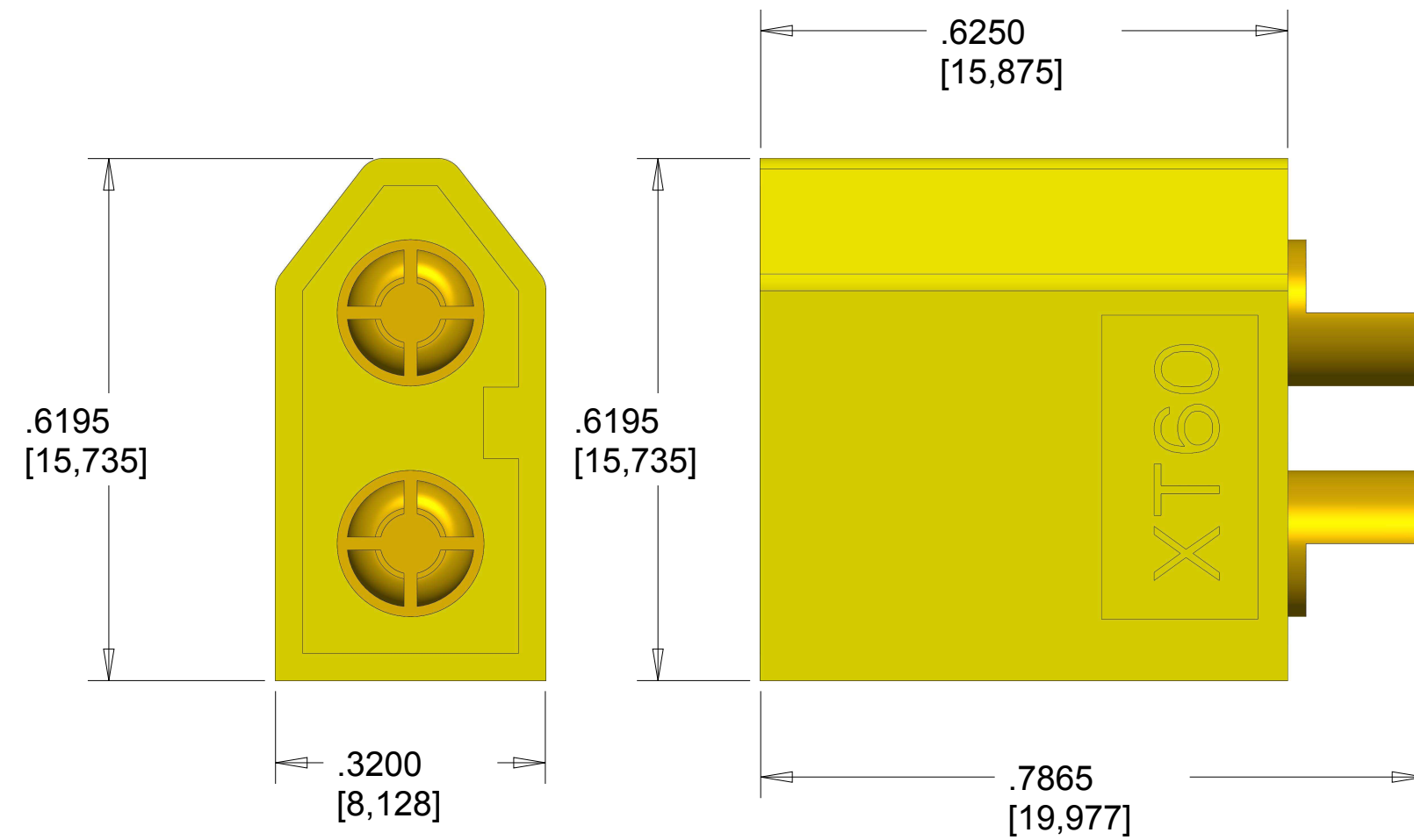
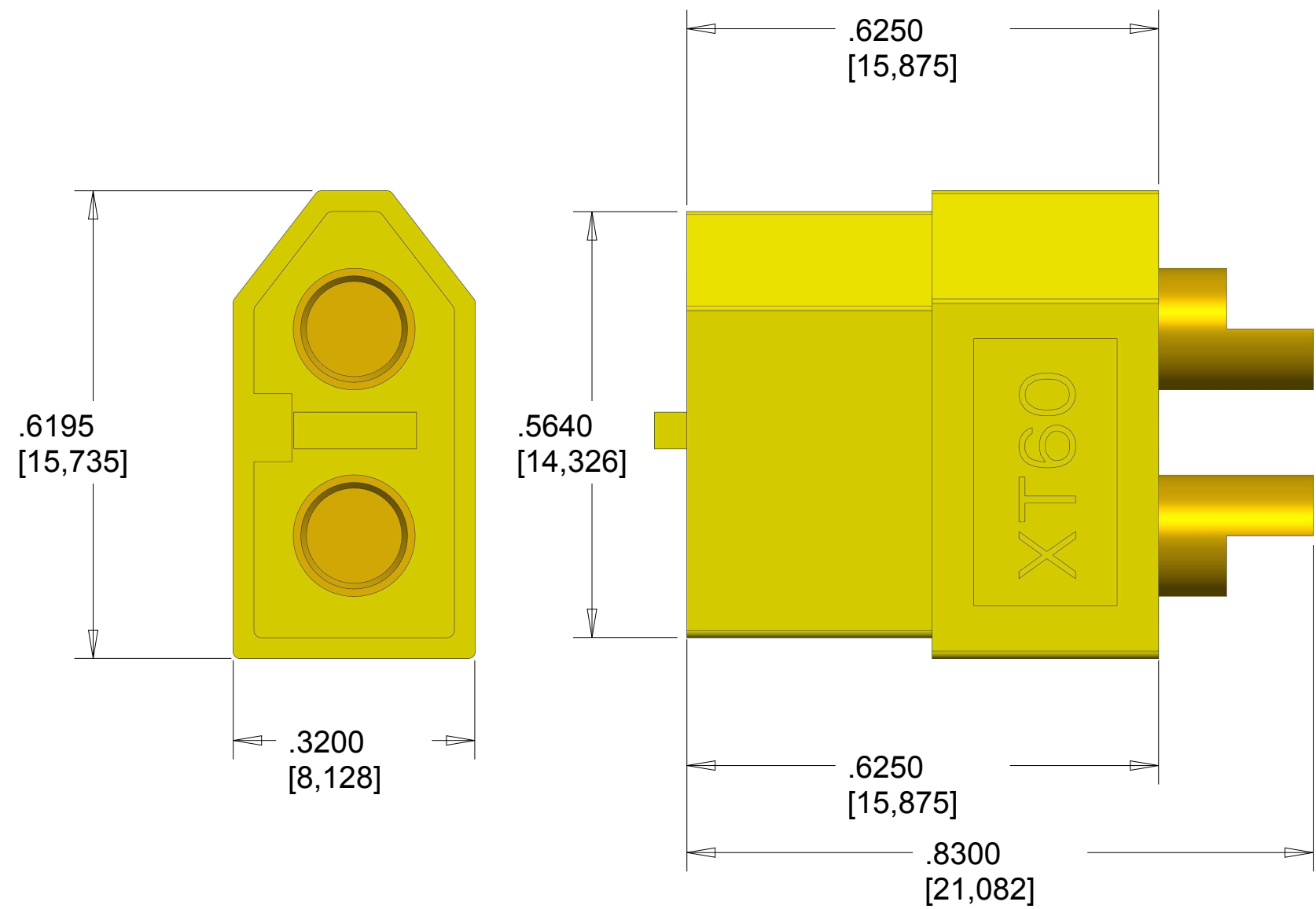


4

3

2

1



SCALE 5.000

<p>These connectors are made from high-temp nylon with gold-plated spring pins or sockets molded in. The shape of the XT60 prevents reverse polarity, and when plugged in the connection is super-solid. Perfect for applications up to and beyond 65A continuous draw. Sold in pairs of 1 male and 1 female connector.</p> <p>NOTES:</p>	MATERIAL:	Nylon + Metal	MODEL NAME:	XT60 Connector
	XT60 Connectors - Male/Female Pair PRT-10474		https://www.sparkfun.com/products/10474	
	DESCRIPTION:		PAGE SIZE C 22 x 17 INCH	
	DRAWN BY:	Paul Smith	SCALE:	5.00
	DATE:	10 July 2013	UNITS:	inch [mm]
CAD APPLICATION: Creo Parametric 2.0			VER:	1.0



SHEET 1 / 1

4

3

2

1