



Chipsmall Limited consists of a professional team with an average of over 10 year of expertise in the distribution of electronic components. Based in Hongkong, we have already established firm and mutual-benefit business relationships with customers from,Europe,America and south Asia,supplying obsolete and hard-to-find components to meet their specific needs.

With the principle of “Quality Parts,Customers Priority,Honest Operation,and Considerate Service”,our business mainly focus on the distribution of electronic components. Line cards we deal with include Microchip,ALPS,ROHM,Xilinx,Pulse,ON,Everlight and Freescale. Main products comprise IC,Modules,Potentiometer,IC Socket,Relay,Connector.Our parts cover such applications as commercial,industrial, and automotives areas.

We are looking forward to setting up business relationship with you and hope to provide you with the best service and solution. Let us make a better world for our industry!



Contact us

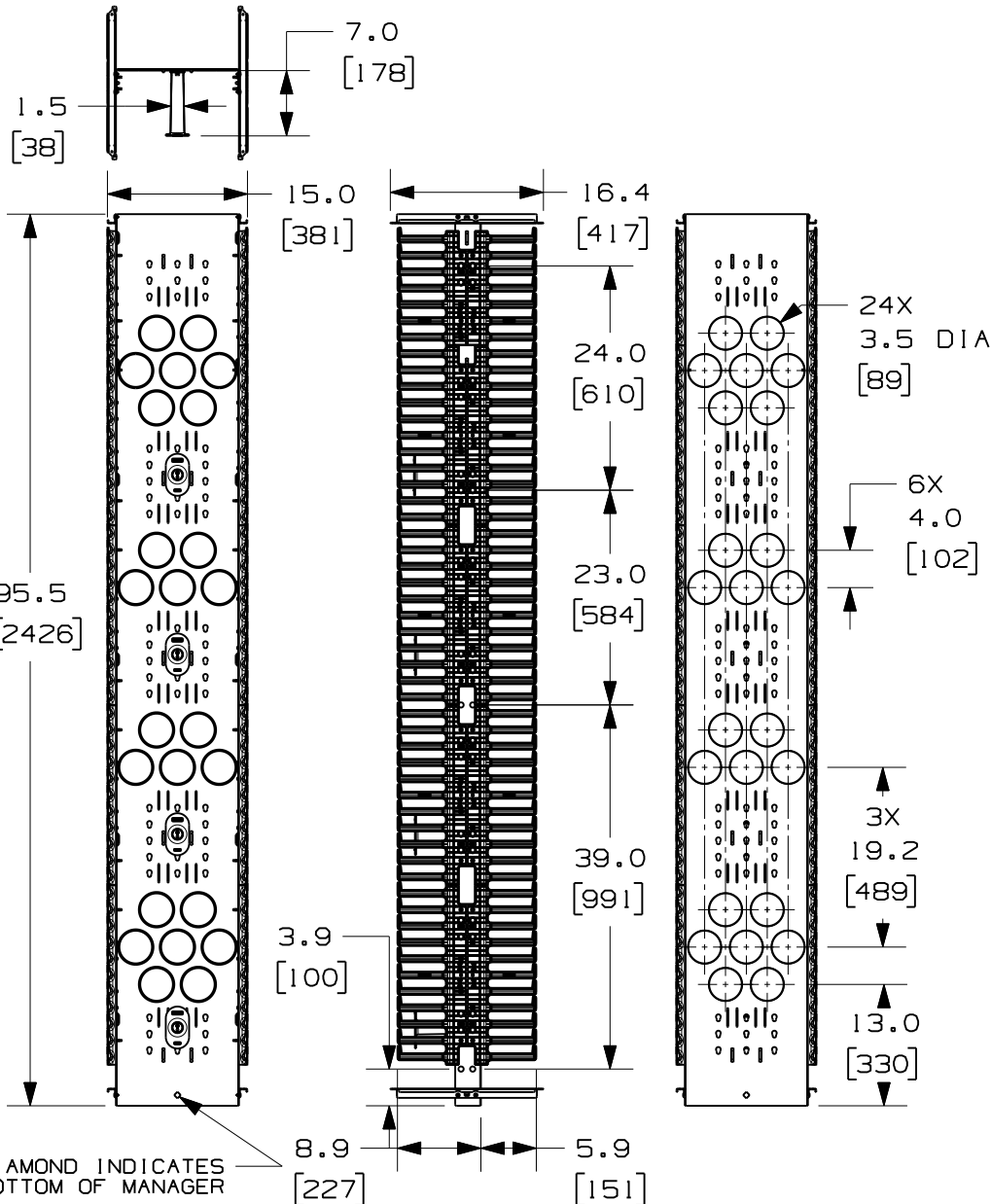
Tel: +86-755-8981 8866 Fax: +86-755-8427 6832

Email & Skype: info@chipsmall.com Web: www.chipsmall.com

Address: A1208, Overseas Decoration Building, #122 Zhenhua RD., Futian, Shenzhen, China



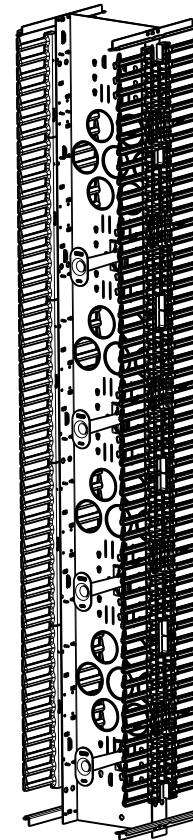
THIS COPY IS PROVIDED ON A RESTRICTED BASIS AND IS NOT TO BE USED IN ANY WAY DETRIMENTAL TO THE INTERESTS OF PANDUIT CORP.



PANDUIT P/N	WEIGHT
PRV1596	50.2 LBS/EACH 22.8 kg/EACH

NOTES:

- VISIT OUR ON-LINE CATALOG AT WWW.PANDUIT.COM FOR A CURRENT LIST OF PRODUCTS APPLICABLE FOR USE WITH THIS PART.
- COMPONENTS: (1) 8 FOOT 15" VERTICAL MANAGER
(1) HARDWARE KIT
(4) MOLDED FRONT SPOOLS (P/N: PRSP7)
- CAN BE USED WITH ANY 19 OR 23 INCH EIA STANDARD RACK.
- 8 FOOT-15" DOOR SOLD SEPARATELY (P/N: PRD1596)
- 5" REAR MOUNTING SPOOLS SOLD SEPARATELY (P/N: PRSP5)
- SPOOLS HAVE MULTIPLE MOUNTING POSITIONS TO ACCOMMODATE CABLE SLACK.
- DIMENSIONS IN PARENTHESES ARE METRIC.
- ALL DIMENSIONS ARE REFERENCE ONLY.



MODEL FILENAME	V10440AF/05.PRT
CAD FILENAME/LAYERS	V10440AF_DC/05A.PRT
PANDUIT CORP. TINLEY PARK, ILLINOIS	
8 FOOT VERTICAL MANAGER 15" FRONT AND REAR (PRV1596) CUSTOMER DRAWING	

REV	DATE	BY	CHK	DESCRIPTION	ECN	R	CUST	SUP	OTH	UNLESS OTHERWISE SPECIFIED, DIMENSIONAL TOLERANCES ARE:	UNLESS OTHERWISE SPECIFIED, ALL DIMENSIONS ARE GIVEN IN INCHES, THIRD ANGLE PROJECTION.
05A	10-7-11	BAME		UPDATED VIEWS	10440-21		CMK			DRAWN BY BAME	SCALE NONE
04A	1-24-11	BAME	NAGL	REMOVED TOLERANCES CHANGED DOOR BRACKET DESIGN	10440-21		CMK				
01	12-14-07	BAME	NAGL	CHANGED FINGER DESIGN	10440-21		CMK			DATE 6-13-07	DRAWING NO. 10440-21
00	6-13-07	BAME	NAGL	RELEASED TO PRODUCTION	10440-21		CMK				
										CHK'D NAGL	DWG A SIZE

MAT'L:
BACKBONE - STEEL
SPOOLS - POLYCARBONATE
FINGERS - ABS