



Chipsmall Limited consists of a professional team with an average of over 10 year of expertise in the distribution of electronic components. Based in Hongkong, we have already established firm and mutual-benefit business relationships with customers from,Europe,America and south Asia,supplying obsolete and hard-to-find components to meet their specific needs.

With the principle of “Quality Parts,Customers Priority,Honest Operation,and Considerate Service”,our business mainly focus on the distribution of electronic components. Line cards we deal with include Microchip,ALPS,ROHM,Xilinx,Pulse,ON,Everlight and Freescale. Main products comprise IC,Modules,Potentiometer,IC Socket,Relay,Connector.Our parts cover such applications as commercial,industrial, and automotives areas.

We are looking forward to setting up business relationship with you and hope to provide you with the best service and solution. Let us make a better world for our industry!



Contact us

Tel: +86-755-8981 8866 Fax: +86-755-8427 6832

Email & Skype: info@chipsmall.com Web: www.chipsmall.com

Address: A1208, Overseas Decoration Building, #122 Zhenhua RD., Futian, Shenzhen, China





PART NAME

MICRO-COMPUTER ENCLOSURE

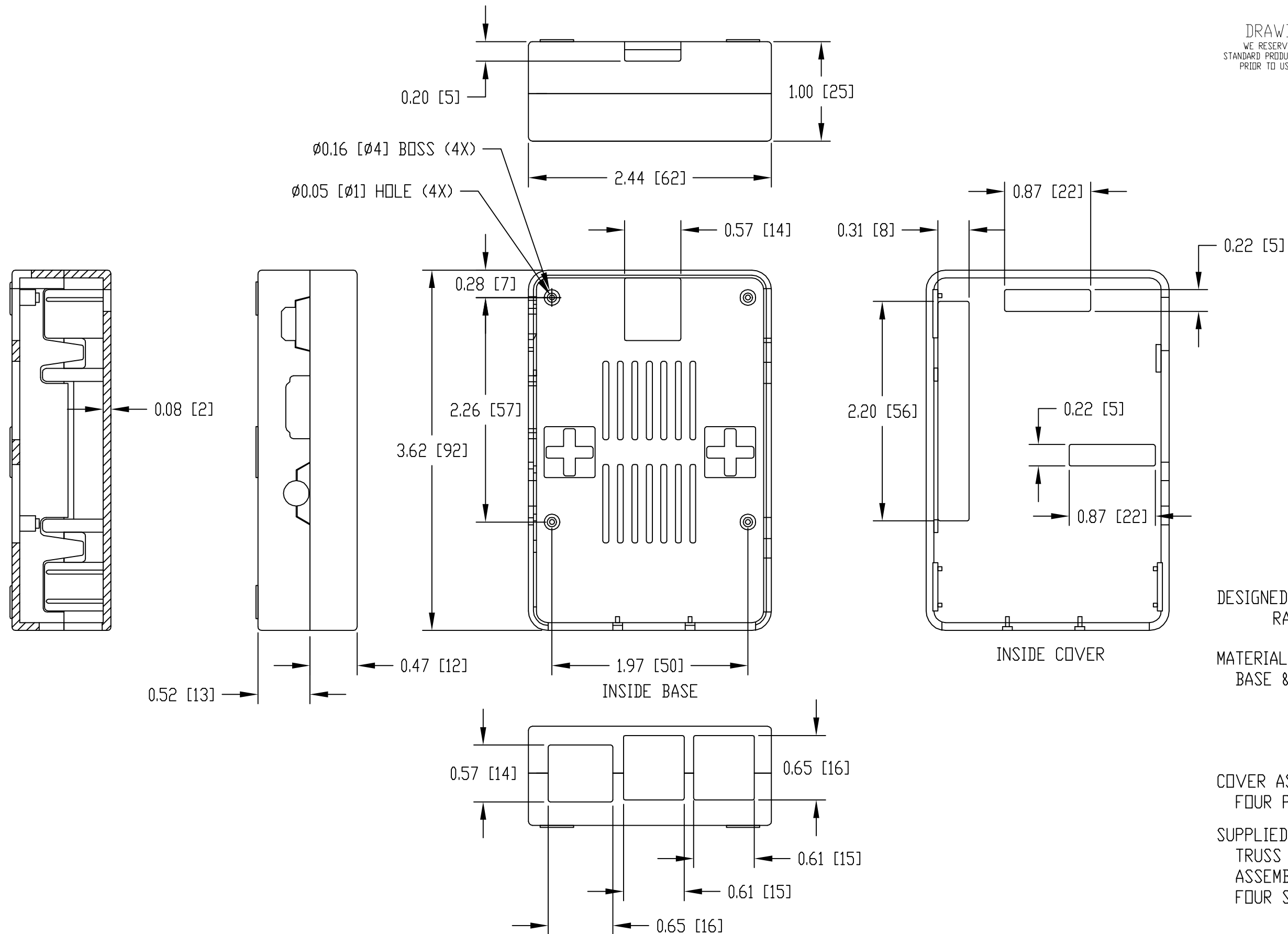
PART No.

PS-11595

REV. DATE

3-12-18

DRAWING FOR REFERENCE
WE RESERVE THE RIGHT TO MAKE CHANGES TO OUR
STANDARD PRODUCTS. PLEASE CONSULT WITH BUD INDUSTRIES
PRIOR TO USING THIS DRAWING FOR DESIGN PURPOSE.



DESIGNED TO ACCEPT VERSION 2&3 OF
RASPBERRY PI MICRO-COMPUTER

MATERIAL:
BASE & COVER - ABS UL94-HB
WHITE (PART NO. SUFFIX -W)
BLACK (PART NO. SUFFIX -B)
CLEAR (PART NO. SUFFIX -C)

COVER ASSEMBLED TO THE BASE WITH
FOUR PLASTIC SNAPS

SUPPLIED WITH FOUR M1.7x3.5 x 4mm LG.
TRUSS WASHER HD. SCREWS FOR
ASSEMBLING THE BOARD AND WITH
FOUR SELF-ADHESIVE NON-SKID FEET