



Chipsmall Limited consists of a professional team with an average of over 10 year of expertise in the distribution of electronic components. Based in Hongkong, we have already established firm and mutual-benefit business relationships with customers from,Europe,America and south Asia,supplying obsolete and hard-to-find components to meet their specific needs.

With the principle of “Quality Parts,Customers Priority,Honest Operation,and Considerate Service”,our business mainly focus on the distribution of electronic components. Line cards we deal with include Microchip,ALPS,ROHM,Xilinx,Pulse,ON,Everlight and Freescale. Main products comprise IC,Modules,Potentiometer,IC Socket,Relay,Connector.Our parts cover such applications as commercial,industrial, and automotives areas.

We are looking forward to setting up business relationship with you and hope to provide you with the best service and solution. Let us make a better world for our industry!



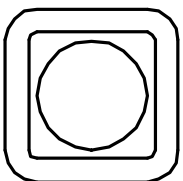
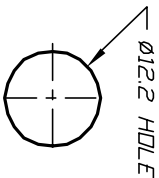
Contact us

Tel: +86-755-8981 8866 Fax: +86-755-8427 6832

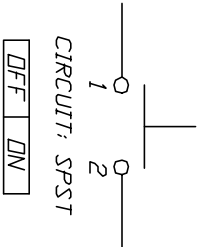
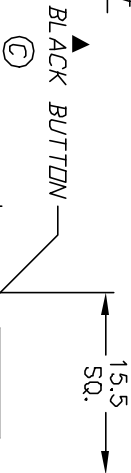
Email & Skype: info@chipsmall.com Web: www.chipsmall.com

Address: A1208, Overseas Decoration Building, #122 Zhenhua RD., Futian, Shenzhen, China



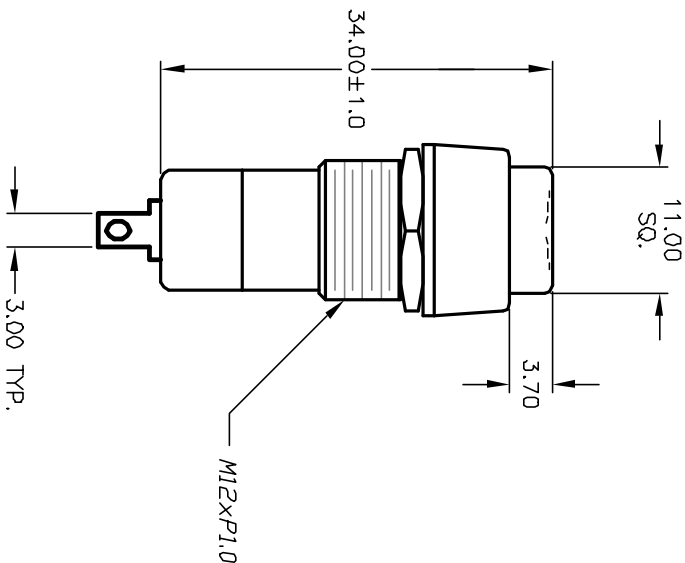
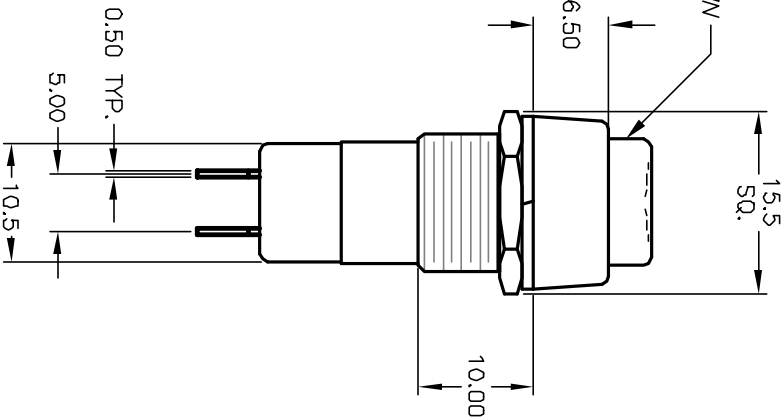


RECOMMENDED PANEL LAYOUT
NOT TO SCALE



NOTES:

1. ALL DIMENSIONS IN MM
2. GENERAL TOLERANCE: $X.X = \pm 0.4$
 $X.XX = \pm 0.25$
3. TERMINAL NO'S FOR REFERENCE ONLY
4. RATING: 3A@ 125VAC, 1.5A@ 250VAC
5. MATERIAL: Silver Plating
6. CONTACT RESISTANCE: 50milli-Ohms
7. INSULATION RESISTANCE: 500V DC 100Mega-Ohm min.
8. DIELECTRIC STRENGTH: 1000V AC 1minute
9. MECHANICAL LIFE: 6,000 Cycles



C	12552	ADD NOTE 9, REMOVED TAB.	11/12/02	CJB
B	11563	ADD NOTES & TABULATION	7/12/01	CJB
REV.	ECN No.	DESCRIPTION	DATE	CHKD

E-SWITCH®				
TITLE				
PS 1023B (BLK BUTTON)				
SCALE	DATE	DR	DWG	REV
1.5:1	8/30/96	MM	F010232	C

THE INFORMATION CONTAINED IN THIS DOCUMENT
IS PROPRIETARY TO E-SWITCH AND IS
NOT TO BE COPIED OR TRANSFERRED