



Chipsmall Limited consists of a professional team with an average of over 10 year of expertise in the distribution of electronic components. Based in Hongkong, we have already established firm and mutual-benefit business relationships with customers from,Europe,America and south Asia,supplying obsolete and hard-to-find components to meet their specific needs.

With the principle of “Quality Parts,Customers Priority,Honest Operation,and Considerate Service”,our business mainly focus on the distribution of electronic components. Line cards we deal with include Microchip,ALPS,ROHM,Xilinx,Pulse,ON,Everlight and Freescale. Main products comprise IC,Modules,Potentiometer,IC Socket,Relay,Connector.Our parts cover such applications as commercial,industrial, and automotives areas.

We are looking forward to setting up business relationship with you and hope to provide you with the best service and solution. Let us make a better world for our industry!



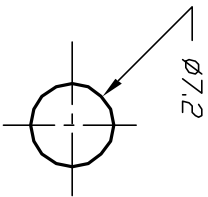
## Contact us

Tel: +86-755-8981 8866 Fax: +86-755-8427 6832

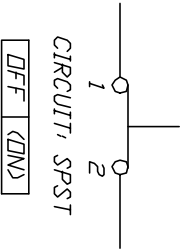
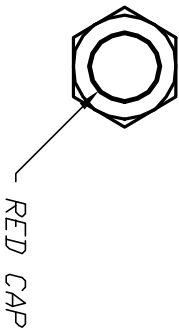
Email & Skype: [info@chipsmall.com](mailto:info@chipsmall.com) Web: [www.chipsmall.com](http://www.chipsmall.com)

Address: A1208, Overseas Decoration Building, #122 Zhenhua RD., Futian, Shenzhen, China





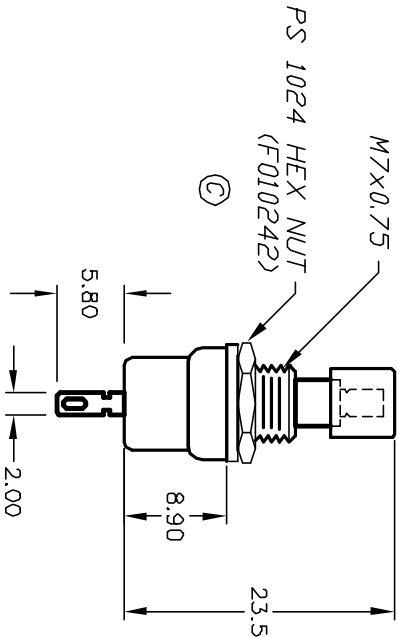
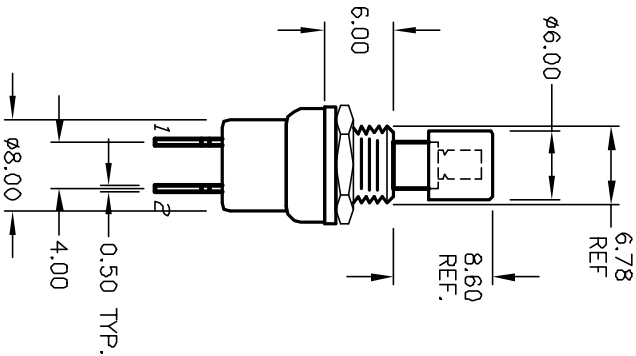
RECOMMENDED PANEL LAYOUT



< >=Momentary

NOTES:

1. ALL DIMENSIONS IN MM
2. GENERAL TOLERANCE:  $X.X = \pm 0.4$   
 $X.XX = \pm 0.25$
3. TERMINAL NO'S FOR REFERENCE ONLY
4. RATING: 3A@ 125VAC; 1.5A @250VAC
5. CONTACT RESISTANCE:  
50mILLI-OHMS max.
6. INSULATION RESISTANCE:  
500V 100Mega-OHMS min.
7. DIELECTRIC STENGTH:  
1000V 1minute
8. HARDWARE SUPPLIED;  
HEX NUT (SHOWN), LOCK WASHER



|      |         |                     |          |      |
|------|---------|---------------------|----------|------|
| C    | 12574   | ADD COMPONENT       | 11/18/02 | CJB  |
| B    | 12105   | REVISED AND REDRAWN | 5/13/02  | CJB  |
| REV. | ECN No. | DESCRIPTION         | DATE     | CHKD |

THE INFORMATION CONTAINED IN THIS DOCUMENT  
IS PROPRIETARY TO E-SWITCH AND IS  
NOT TO BE COPIED OR TRANSFERRED

|                    |          |    |         |     |
|--------------------|----------|----|---------|-----|
| E-SWITCH®          |          |    |         |     |
| TITLE              |          |    |         |     |
| PS 1024A (RED CAP) |          |    |         |     |
| SCALE              | DATE     | DR | DWG     | REV |
| 1.5:1              | 11/13/96 | MM | F010241 | C   |