



Chipsmall Limited consists of a professional team with an average of over 10 year of expertise in the distribution of electronic components. Based in Hongkong, we have already established firm and mutual-benefit business relationships with customers from,Europe,America and south Asia,supplying obsolete and hard-to-find components to meet their specific needs.

With the principle of "Quality Parts,Customers Priority,Honest Operation,and Considerate Service",our business mainly focus on the distribution of electronic components. Line cards we deal with include Microchip,ALPS,ROHM,Xilinx,Pulse,ON,Everlight and Freescale. Main products comprise IC,Modules,Potentiometer,IC Socket,Relay,Connector.Our parts cover such applications as commercial,industrial, and automotives areas.

We are looking forward to setting up business relationship with you and hope to provide you with the best service and solution. Let us make a better world for our industry!



Contact us

Tel: +86-755-8981 8866 Fax: +86-755-8427 6832

Email & Skype: info@chipsmall.com Web: www.chipsmall.com

Address: A1208, Overseas Decoration Building, #122 Zhenhua RD., Futian, Shenzhen, China





Power Splitter

PS Series

Features

- Resistive type power splitter. Wide frequency range : DC to 20GHz.
- Wide band provides less distortion of square pulses of digital signals
- Small and easy to mount
- Special design and thin film produce less reflection.

Applications

- Communication devices
- Wide band measuring instrumentation



Part numbering system

PS 1608 G T2 - R50 - T1

Series code	PS 1608	G	T2 - R50 - T1	
Size : PS1005,PS1608,PS2012 PS3216,PS5025				Packing quantity: T=Tape (T1/T5), B=Bulk
G : General				Impedance : 50Ω
				Number of Output terminals

PS 1005 T2 - R50 - FD - T1

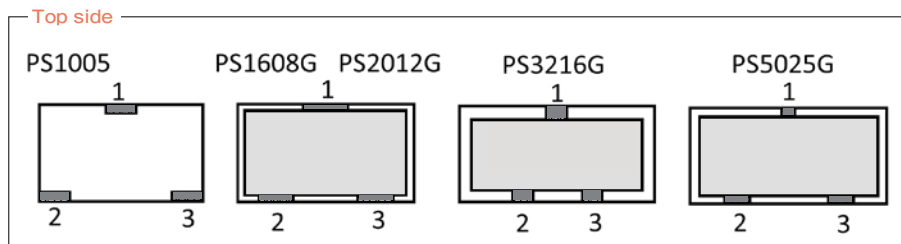
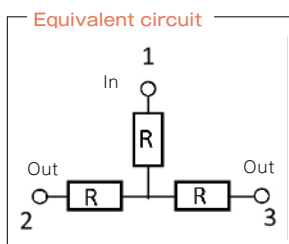
Series code	PS 1005	T2 - R50 - FD - T1	
Size : PS1005			Packing quantity: T=Tape (T1/T5), B=Bulk
Number of Output terminals			No GND, Need Face down mounting
			Impedance : 50Ω

Electrical Specification

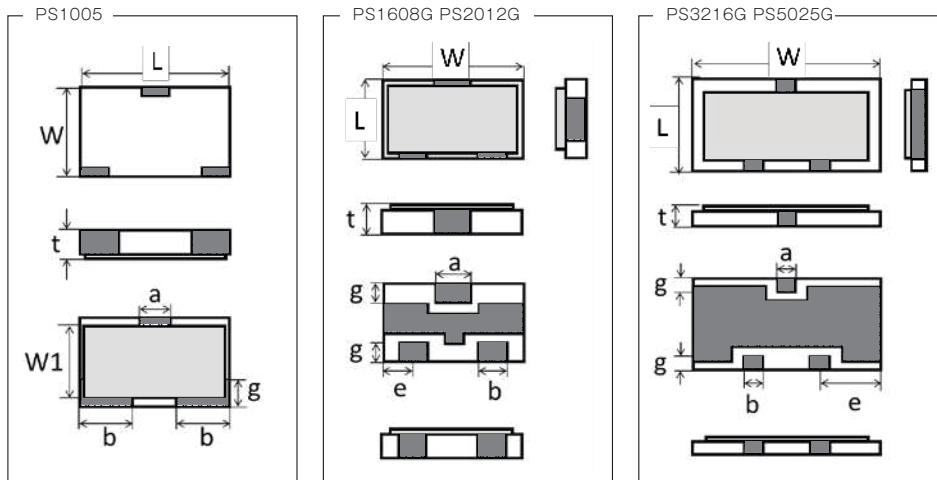
Type	PS1005 ※1	PS1608G	PS2012G	PS3216G	PS5025G
Operating frequency	DC - 20GHz	DC - 20GHz	DC - 17.5GHz	DC - 15GHz	DC - 10GHz
Rated power	100mW	100mW	125mW	250mW	500mW
Insertion Loss	6dB±0.5dB				< 10GHz
	6dB±1.0dB				< 7.5GHz
Distribution Deviation		< 0.3dB (Max frequency)			
VSWR	≤1.3				< 10GHz
	≤1.5				< 7.5GHz
Operating temperature	-40°C ~ +125°C				
Packaging quantity	50pcs/bag(B)				
	1,000pcs/reel(T1)				
	5,000pcs/reel(T5)				

※1 The PS1005 series has no ground plane.

Equivalent Circuit and pin arrangement



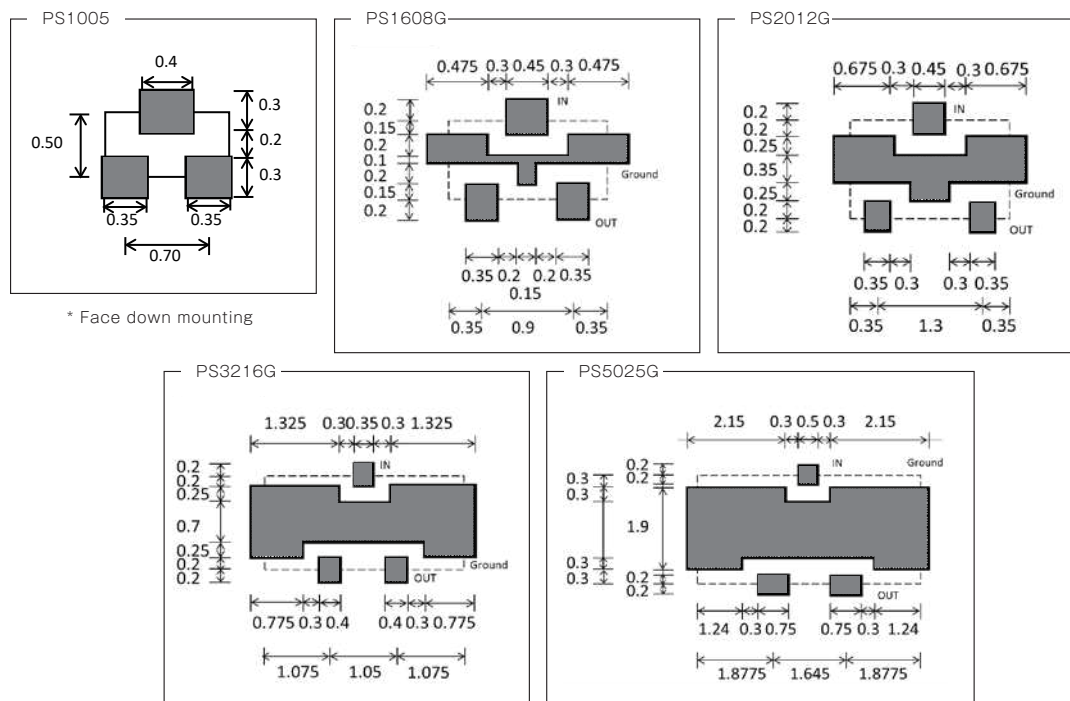
◆ Dimensions



Type	Size (inch)	W	L	t	a	b	e	g
PS1005	0402	1.00±0.10	0.50±0.10	0.30±0.10	0.40±0.10	0.35±0.10	—	0.20±0.10
PS1608G	0603	1.60±0.10	0.80±0.10	0.40±0.10	0.45±0.10	0.35±0.10	0.40±0.10	0.25±0.10
PS2012G	0805	2.00±0.10	1.25±0.10	0.40±0.10	0.45±0.15	0.35±0.15	0.35±0.10	0.25±0.10
PS3216G	1206	3.20±0.10	1.60±0.10	0.40±0.10	0.35±0.10	0.40±0.15	1.075±0.10	0.20±0.10
PS5025G	2010	5.00±0.20	2.50±0.20	0.80±0.20	0.50±0.20	0.75±0.20	1.65±0.20	0.30±0.15

(unit : mm)

◆ Recommended land patterns (soldering footprints)



◆ Derating Curve

