



Chipsmall Limited consists of a professional team with an average of over 10 year of expertise in the distribution of electronic components. Based in Hongkong, we have already established firm and mutual-benefit business relationships with customers from,Europe,America and south Asia,supplying obsolete and hard-to-find components to meet their specific needs.

With the principle of “Quality Parts,Customers Priority,Honest Operation,and Considerate Service”,our business mainly focus on the distribution of electronic components. Line cards we deal with include Microchip,ALPS,ROHM,Xilinx,Pulse,ON,Everlight and Freescale. Main products comprise IC,Modules,Potentiometer,IC Socket,Relay,Connector.Our parts cover such applications as commercial,industrial, and automotives areas.

We are looking forward to setting up business relationship with you and hope to provide you with the best service and solution. Let us make a better world for our industry!



## Contact us

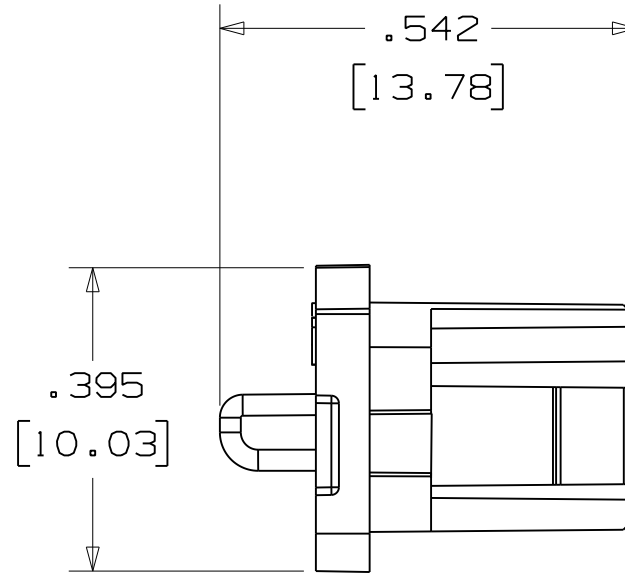
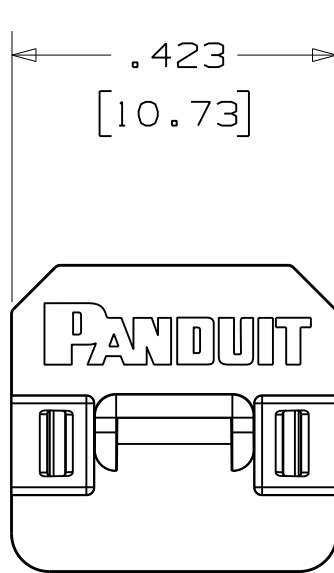
Tel: +86-755-8981 8866 Fax: +86-755-8427 6832

Email & Skype: [info@chipsmall.com](mailto:info@chipsmall.com) Web: [www.chipsmall.com](http://www.chipsmall.com)

Address: A1208, Overseas Decoration Building, #122 Zhenhua RD., Futian, Shenzhen, China

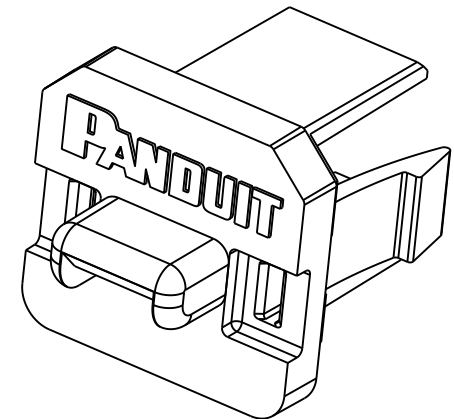


THIS COPY IS PROVIDED ON A RESTRICTED BASIS AND IS NOT TO BE USED IN ANY WAY DETRIMENTAL TO THE INTERESTS OF PANDUIT CORP.



NOTES:

1. [ ] DENOTE MILLIMETERS
2. TEMPERATURE RANGE:  
-40°F (-40°C) TO 120°F (60°C)
3. RoHS COMPLIANT



										CAD FILENAME/LAYERS				111084BD_DC_C10956/08B							
										PANDUIT CORP. TINLEY PARK, ILLINOIS											
										PSL-USBB USB TYPE "B" BLOCKOUT CUSTOMER DRAWING											
										UNLESS OTHERWISE SPECIFIED, DIMENSIONAL TOLERANCES ARE: (.X) ± .05 (.XX) ± .03						UNLESS OTHERWISE SPECIFIED, ALL DIMENSIONS ARE GIVEN IN INCHES, THIRD ANGLE PROJECTION.					
										DRAWN BY JHAC						SCALE 4 : 1					
1	6/7/12	JHAC		ADDED PART NUMBER TO TITLE BLOCK				GAECN00001						DATE 03/13/12		RED POLYCARBONATE		DRAWING NO. C10956		DWG A	
0	3/13/12	JHAC		DRAWING RELEASE				6735						CHK'D							
REV	DATE	BY	CHK	DESCRIPTION				ECN - R		CUST	SUP										