



Chipsmall Limited consists of a professional team with an average of over 10 year of expertise in the distribution of electronic components. Based in Hongkong, we have already established firm and mutual-benefit business relationships with customers from,Europe,America and south Asia,supplying obsolete and hard-to-find components to meet their specific needs.

With the principle of “Quality Parts,Customers Priority,Honest Operation,and Considerate Service”,our business mainly focus on the distribution of electronic components. Line cards we deal with include Microchip,ALPS,ROHM,Xilinx,Pulse,ON,Everlight and Freescale. Main products comprise IC,Modules,Potentiometer,IC Socket,Relay,Connector.Our parts cover such applications as commercial,industrial, and automotives areas.

We are looking forward to setting up business relationship with you and hope to provide you with the best service and solution. Let us make a better world for our industry!



## Contact us

Tel: +86-755-8981 8866 Fax: +86-755-8427 6832

Email & Skype: [info@chipsmall.com](mailto:info@chipsmall.com) Web: [www.chipsmall.com](http://www.chipsmall.com)

Address: A1208, Overseas Decoration Building, #122 Zhenhua RD., Futian, Shenzhen, China



NOTES:

1. MATERIALS AND FINISHES:

BODY - BRASS, GOLD PLATING  
CONTACT - BRASS, GOLD PLATING  
INSULATOR - PEEK

2. ELECTRICAL:

- A. IMPEDANCE:50 OHM  
B. FREQUENCY RANGE: DC-10 GHz  
C. RETURN LOSS: 30 dB MIN.@ DC-4 GHz  
25 dB MIN.@ 4-6 GHz  
D. INSERTION LOSS:  $0.03X\sqrt{f(\text{GHz})}$  dB MAX.  
E. INSULATION RESISTANCE:5 GΩ MIN.  
F. DIELECTRIC WITHSTANDING VOLTAGE: 1000 VRMS MIN.  
G. POWER HANDLING:200 W MAX.@ 2.2 GHz AT 20°C, SEA LEVEL,VSWR 1.0  
H. INTERMODULATION(3rd order):160 dBc MIN.@ (2X43dBm)

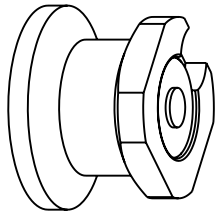
3. MECHANICAL:

- A. MATING CYCLES:1000 MIN.  
B. ENGAGEMENT FORCE: 10 N MAX  
C. DISENGAGEMENT FORCE: 2.2 N MIN  
D. INNER CONTACT RETENTION FORCE: 7 N MIN  
E. TEMPERATURE RANGE: -65° C TO 165° C

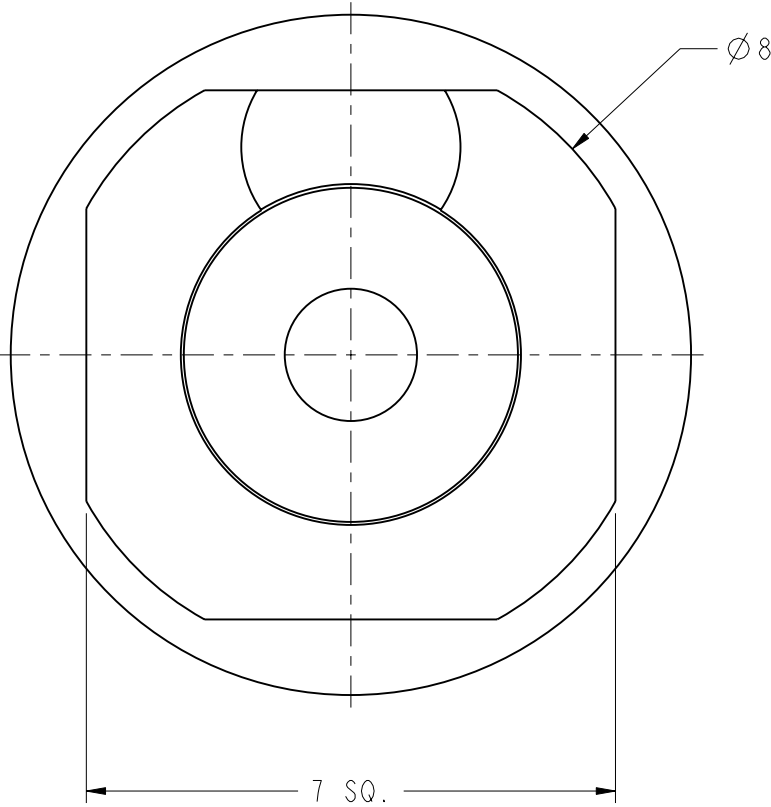
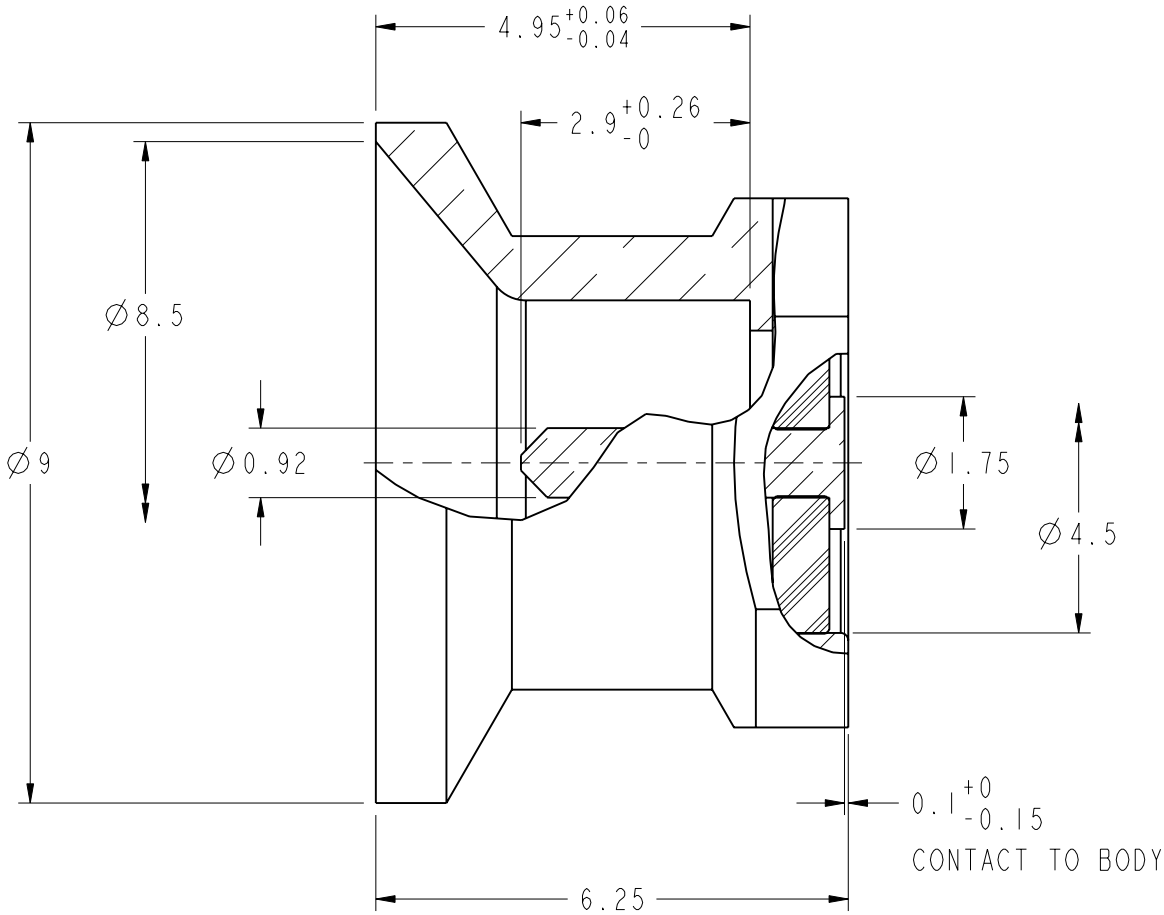
THIRD ANGLE PROJ. 

REVISIONS

REV	DESCRIPTION	DATE	ECO	APPR
A	RELEASE TO MFG	25-Aug-15		SW
B	TITLE WAS CHANGED, ADDED PART NO. PSMP-MSSB-PCS	19-Nov-15	50842	SW



SCALE 3.000



CUSTOMER OUTLINE DRAWING

ALL OTHER SHEETS ARE FOR INTERNAL USE ONLY

UNLESS OTHERWISE SPECIFIED, DIMENSIONS ARE IN METRIC AND TOLERANCES ARE: <0.5mm ± 0.05mm    0.5 - 6mm ±0.1mm    6 - 30mm ±0.2mm    30 - 120mm ± 0.3mm    ANGLES ±1°  NOTICE - These drawings, specifications, or other data (1) are, and remain the property of Amphenol corp. (2) must be returned upon request; and (3) are confidential and not to be disclosed to any person other than those to whom they are given by Amphenol Corp. the furnishing of these drawings, specifications, or other data by Amphenol Corp., or to any other person to anyone for any purpose is not to be regarded by implication or otherwise in any manner licensing, granting rights to permitting such holder or any other person to manufacture, use or sell any product, process or design, patented or otherwise, that may in any way be related to or disclosed by said drawings, specifications, or other data.	MATERIAL	DRAWN STAMN	DATE 20-Nov-15	TITLE POWER-SMP, MALE FOR PCB SMOOTH BORE		Amphenol RF Danbury CT USA, Tainan, Taiwan, Shenzhen, China www.amphenolrf.com	
		ENGINEER RICKSON	DATE 26-Aug-15				
	REFERENCE EAR 6570 119S14R-40ML5	APPROVED S.HSIEH	DATE 20-Nov-15	SCALE: 10.0:1.0	SHEET 2 OF 2	DRAWING NO. PSMP1251BI-003-8GPAP8GPA-50	
	FINISH	I:\PSMP\PSMP1251BI-003-8GPAP8GPA-50		DWG SIZE B	REV B	ITEM NO. 671251ABSA12C5F PART NO. PSMP-MSSB-PCS	