



Chipsmall Limited consists of a professional team with an average of over 10 year of expertise in the distribution of electronic components. Based in Hongkong, we have already established firm and mutual-benefit business relationships with customers from,Europe,America and south Asia,supplying obsolete and hard-to-find components to meet their specific needs.

With the principle of “Quality Parts,Customers Priority,Honest Operation,and Considerate Service”,our business mainly focus on the distribution of electronic components. Line cards we deal with include Microchip,ALPS,ROHM,Xilinx,Pulse,ON,Everlight and Freescale. Main products comprise IC,Modules,Potentiometer,IC Socket,Relay,Connector.Our parts cover such applications as commercial,industrial, and automotives areas.

We are looking forward to setting up business relationship with you and hope to provide you with the best service and solution. Let us make a better world for our industry!



Contact us

Tel: +86-755-8981 8866 Fax: +86-755-8427 6832

Email & Skype: info@chipsmall.com Web: www.chipsmall.com

Address: A1208, Overseas Decoration Building, #122 Zhenhua RD., Futian, Shenzhen, China





Smart Socket

User Guide

FPGA-UG-02046 Version 1.1

April 2018

Contents

1. Introduction	4
2. Features	4
3. Block Diagram	5
4. Board Specifications	6
5. Software Requirements	7
5.1. Generic Programming	7
5.2. Specific Software Requirements for Certain Device Families	11
5.2.1. MachXO3 Device Family Programming	11
5.2.2. ECP5 Device Family Programming	11
5.2.3. L-ASC10 Device Programming	11
5.2.4. iCE40 Device Family Programming	16
5.2.5. CrossLink Device Family Programming	19
6. Ordering Information	21
Technical Support	22
Appendix A. Smart Socket Board Schematics	23
Appendix B. Debugging	27
Revision History	29

Figures

Figure 3.1. Smart Socket Programming Board Block Diagram.....	5
Figure 5.1. Getting Started	7
Figure 5.2. Scanning.....	7
Figure 5.3. Unable to Identify Device	8
Figure 5.4. Identifying Correct Device	8
Figure 5.5. Access Device Properties through Edit	8
Figure 5.6. Programming Options.....	9
Figure 5.7. Bit File Selection	9
Figure 5.8. Program Icon	9
Figure 5.9. Design Menu.....	9
Figure 5.10. Programming in Progress.....	10
Figure 5.11. Successful Programming.....	10
Figure 5.12. ASC Socket – Scanned MachXO2 Device	11
Figure 5.13. ASC Socket – Operation	11
Figure 5.14. ASC Socket – Device Properties	12
Figure 5.15. ASC Socket – Add External ASC Device	12
Figure 5.16. ASC Socket – ASC File Load Menu.....	13
Figure 5.17. ASC Socket – Operation Menu.....	14
Figure 5.18. Warning	14
Figure 5.19. ASC Socket – Warning for MachXO2	15
Figure 5.20. ASC Socket – Ready to Program Step	15
Figure 5.21. ASC Socket – Programming.....	15
Figure 5.22. ASC Socket – Programming Completed	16
Figure 5.23. iCE40 Family – Scanning Failed	16
Figure 5.24. iCE40 Family – Device Family List	17
Figure 5.25. iCE40 Family – Select the Programming File.....	17
Figure 5.26. iCE40 Family – Program Icon	17
Figure 5.27. iCE40 Family – Programming Completed Successfully	18
Figure 5.28. CrossLink Family – Scanning Failed	19
Figure 5.29. CrossLink Family – Device Family List	20
Figure 5.30. CrossLink Family – Select the Programming File	20
Figure 5.31. CrossLink Family – Program Icon	21
Figure 5.32. CrossLink Family – Programming Completed Successfully	21
Figure A.1. USB Programming Interface	23
Figure A.2. Voltage Regulator and LEDs	24
Figure A.3. JTAG Bank and Connections	25
Figure A.4. VCC Core, Bypass Caps, and Test Points	26
Figure B.1. Failed to Scan Device	27
Figure B.2. Detect Cable (FTDI).....	27
Figure B.3. Scanning Completed.....	28

1. Introduction

This document describes Smart Socket, the next generation programming solution, from Lattice Semiconductor. Smart Socket replaces the legacy Lattice Model 300 and its associated Socket Adapters. Smart Socket uses the same JTAG-based Lattice Diamond[®] Programmer programming software that is used with Lattice Semiconductor's popular evaluation and customer boards. Standard ESD environment and procedures should be followed when working with loose devices and the Smart Socket.

2. Features

Each Smart Socket board is unique for a device family and package. Smart Socket boards have common features such as:

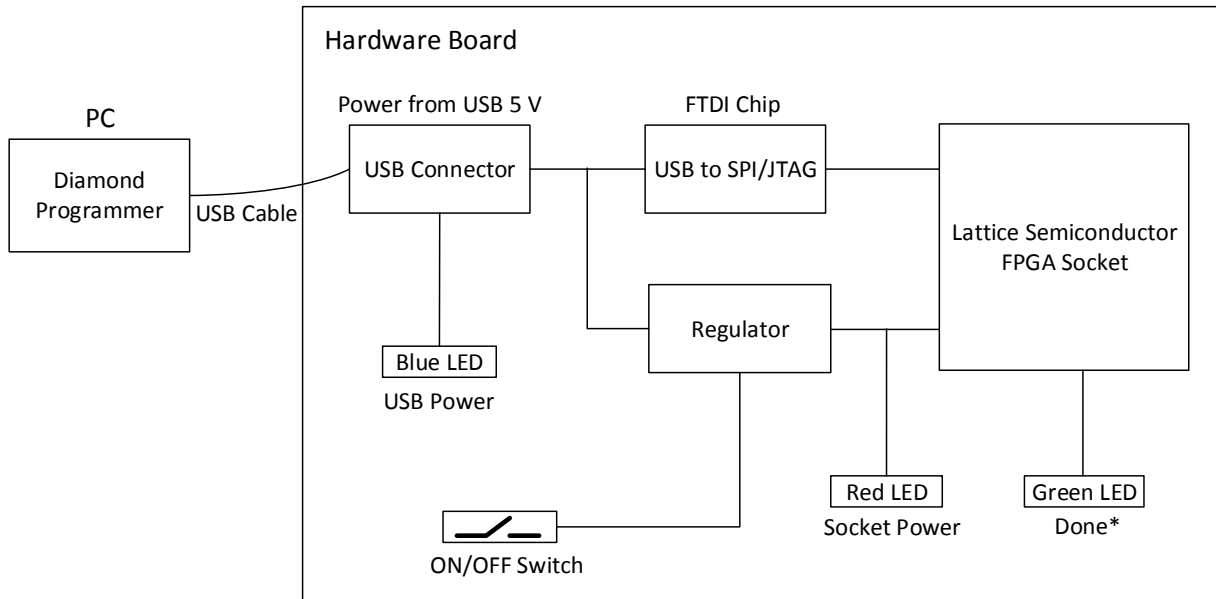
- Powered over simple USB cable
- Power switch to remove power from the socket
- Integrated FTDI USB interface to work directly with Lattice Programming tools
- Power indicator LEDs
- Convenient test points

3. Block Diagram

Figure 3.1 shows the high level blocks of a Smart Socket board. The four major blocks on the board are:

- USB connector
- USB-to-SPI/JTAG communication bridge
- Board power regulator
 - Some product families, such as MachX02, have parts with different core supply voltage requirements. The Smart Socket board jumper (J2) allows you to select between 1.2 V and 3.3 V core supply voltage. The selected core supply voltage is indicated by LEDs located next to the jumper on the board.
- Lattice Semiconductor Socket (family specific)

A switch controls power to the socket. Three separate LEDs indicate USB power, Socket Power and Programming Done (Programming Done support varies by device family).



*Note: Programming Done support depends on the device family.

Figure 3.1. Smart Socket Programming Board Block Diagram

4. Board Specifications

The outline dimension is the same for all Smart Socket boards. The dimensions of the socket vary based on target device family and package.

Board dimensions:

- Width: 4 inch
- Length: 6 inch
- Height: < 2 inch

Electrical Specification:

- +5 V @ 500 mA or less (provided by USB cable)

The complete list of sockets is available at: <http://www.latticesemi.com/sockets>

5. Software Requirements

Smart Socket is supported by Lattice Diamond® Programmer. The latest version of the Lattice Diamond Programmer can be downloaded at:

<http://www.latticesemi.com/en/Products/DesignSoftwareAndIP/FPGAandLDS/LatticeDiamond.aspx>

Smart Socket works with the Lattice Diamond Programmer using only a USB cable. Connect the cable from the Smart Socket to a PC, and use the cable search feature in Lattice Diamond Programmer to establish the programming link. The steps to program a device are described below.

5.1. Generic Programming

To program the device:

1. Launch the Lattice Diamond Programmer software. The **Diamond Programmer Getting Started** dialog box appears as shown in [Figure 5.1](#).

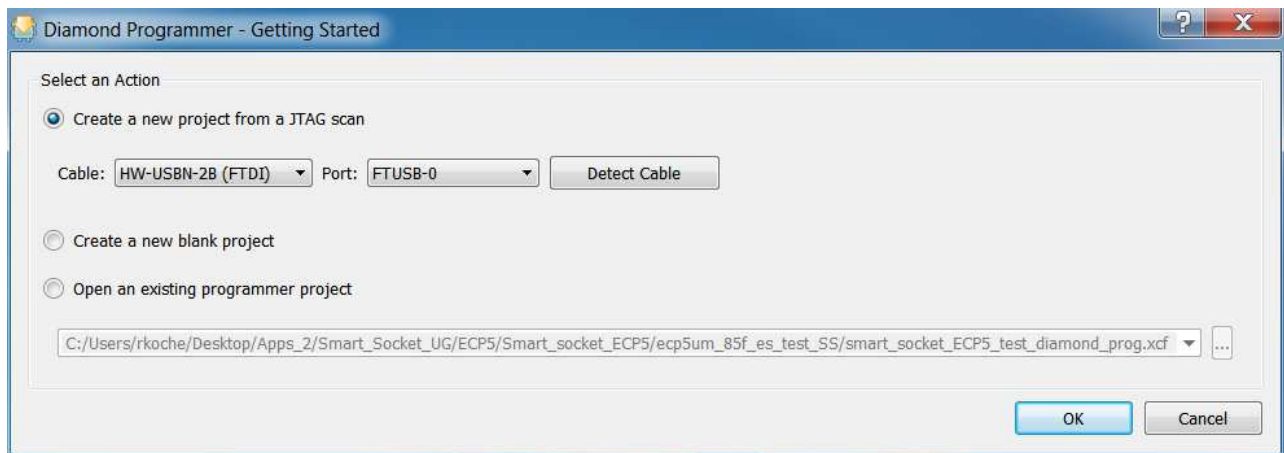


Figure 5.1. Getting Started

2. Click **OK**. The Diamond Programmer automatically starts scanning. The scanning page appears as shown in [Figure 5.2](#).

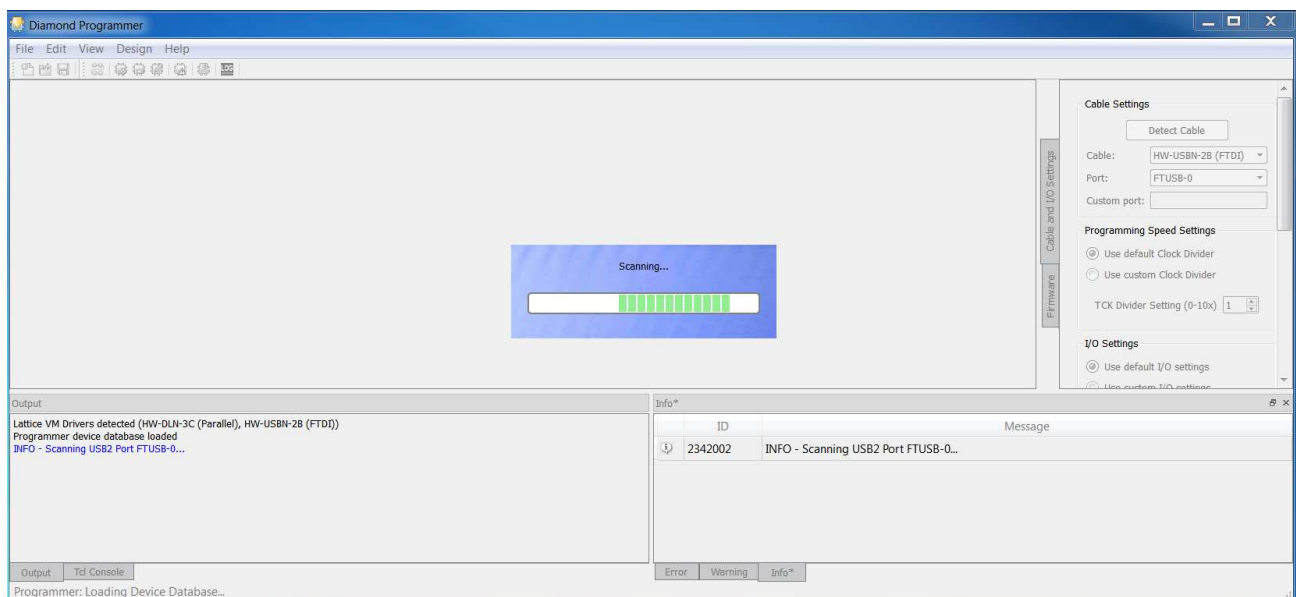


Figure 5.2. Scanning

When the device scanning is completed, the Diamond Programmer tool shows the device present in socket in the **Device** tab. If the Diamond Programmer is unable to identify the device in socket, the device family name is highlighted with a yellow background under **Device** as shown in [Figure 5.3](#). Some device families may not support the scan operation. For details, see the [Software Requirements for Specific Device Families](#) section.

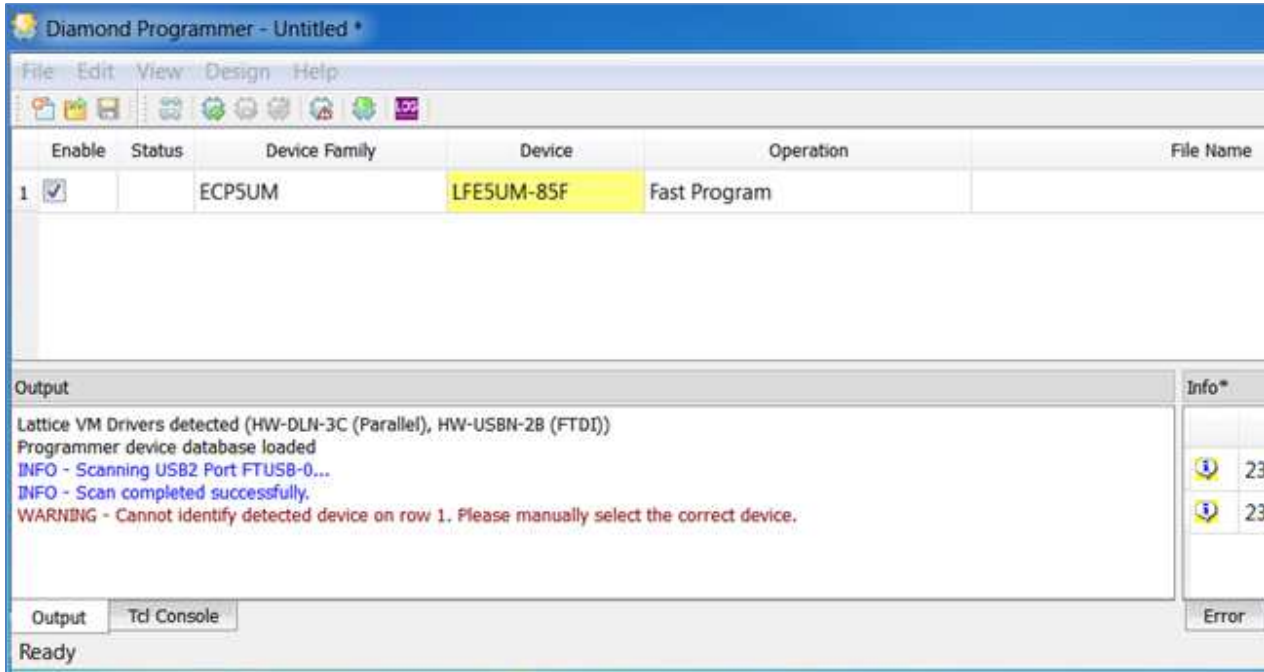


Figure 5.3. Unable to Identify Device

In such case, click in the yellow highlighted area and select the appropriate device by matching the device name on the package with the dropdown list in the **Device** tab. Select the correct device on the dropdown list, and the yellow background highlighting disappears as shown in [Figure 5.4](#).

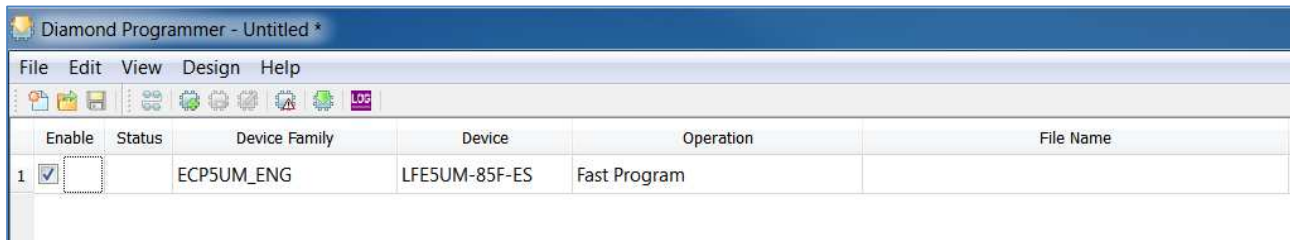


Figure 5.4. Identifying Correct Device

- Verify that the desired **Operation** is specified, and update if necessary. To update the operation, select the device row so that it is highlighted in blue as shown in [Figure 5.5](#). On the menu bar, click **Edit**, and on the dropdown menu click **Device Properties** as shown in [Figure 5.5](#).

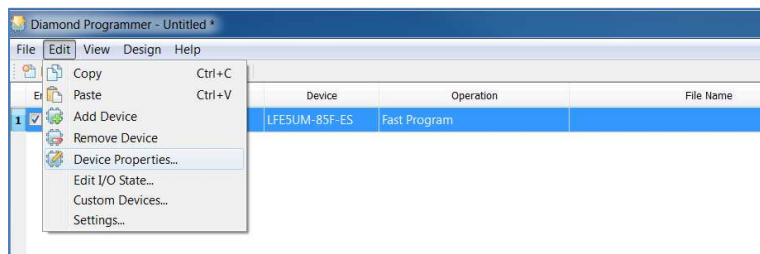



Figure 5.5. Access Device Properties through Edit

- Select the appropriate programming file by clicking the **Browse** button  in the **Programming Options** section as shown in [Figure 5.6](#).
- Click **OK**.

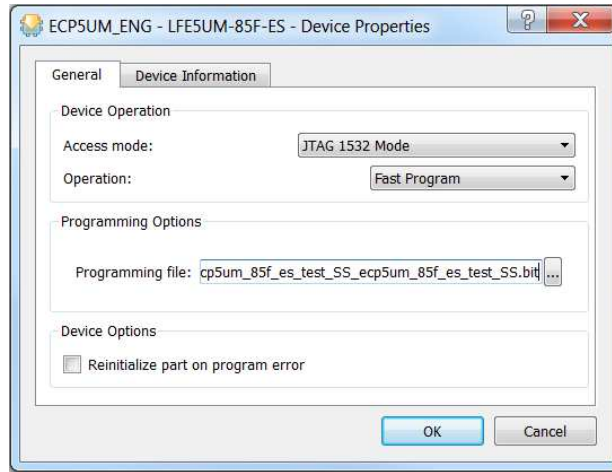


Figure 5.6. Programming Options

- The selected file is shown under **File Name** in the Diamond Programmer main interface as shown in [Figure 5.7](#).

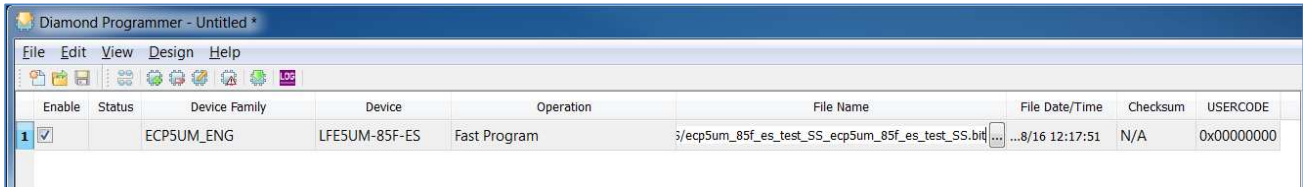



Figure 5.7. Bit File Selection

- To start programming the device, click the **Program** icon  shown in [Figure 5.8](#).

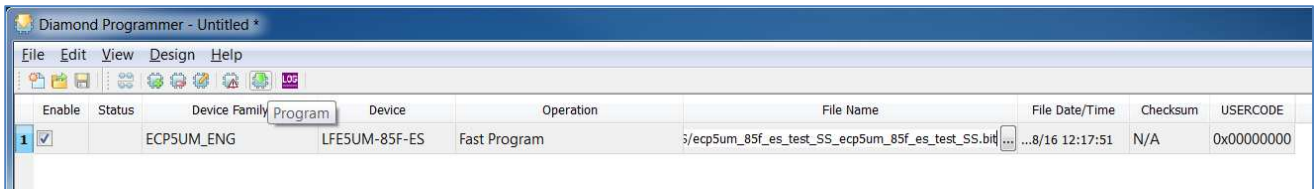


Figure 5.8. Program Icon

You can also click **Design** and select **Program** as shown in [Figure 5.9](#).

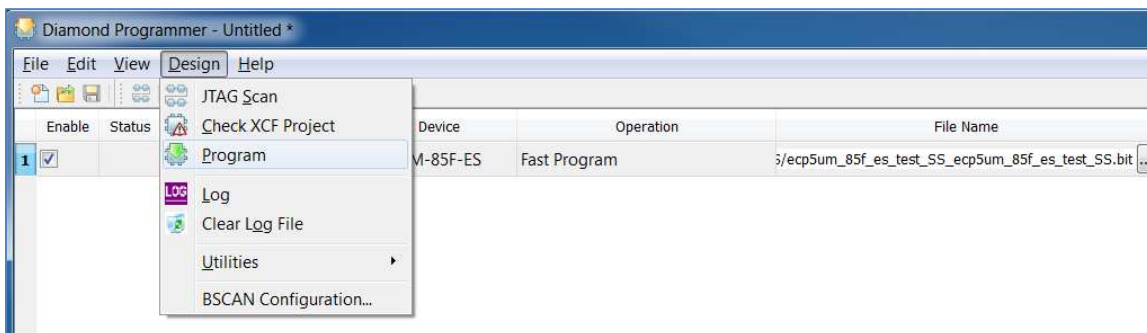


Figure 5.9. Design Menu

Figure 5.10 shows that the programming of device is in progress.

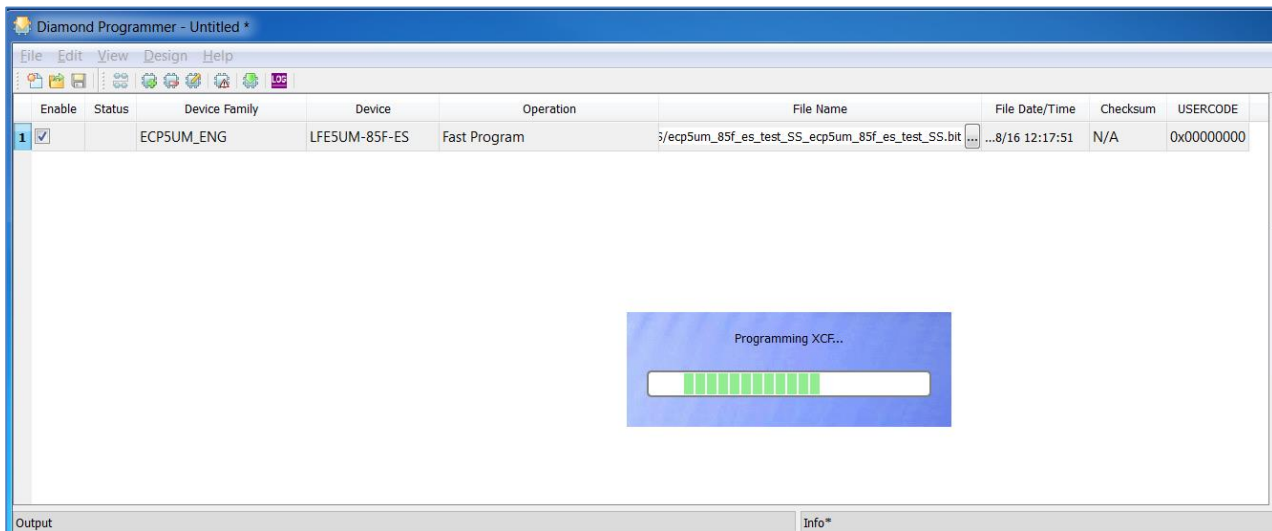


Figure 5.10. Programming in Progress

- When the programming of the device is completed, the **Status** option changes to **PASS** and **Operation: successful** message appears in the **Output** console as shown in Figure 5.11.

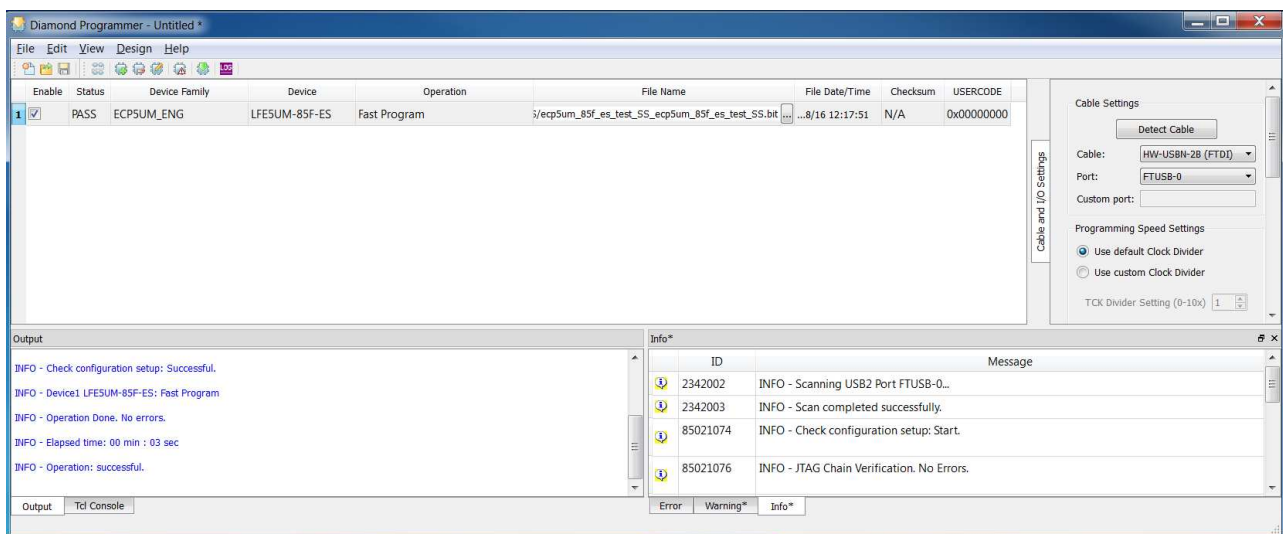


Figure 5.11. Successful Programming

On the board, the green *Done* LED is lit when the device is successfully programmed (*Done* LED behavior is device dependent, see the [Software Requirements for Specific Device Families](#) section for details).

5.2. Software Requirements for Specific Device Families

5.2.1. MachXO3 Device Family Programming

The programming of MachXO3 device family follows steps similar to the process described in the [Generic Programming](#) section. *Done* is not a dedicated output in the MachXO3 device family. *Done* LED indication is not supported.

5.2.2. ECP5 Device Family Programming

The programming of ECP5 device family follows steps similar to the process described in the [Generic Programming](#) section. When the programming of these devices is completed successfully, the *Done* LED is lit.

5.2.3. L-ASC10 Device Programming

To program the ASC device:

1. Launch the Lattice Diamond Programmer software.

The Diamond Programmer automatically starts scanning the device and detects the MachXO2 device as shown in [Figure 5.12](#).

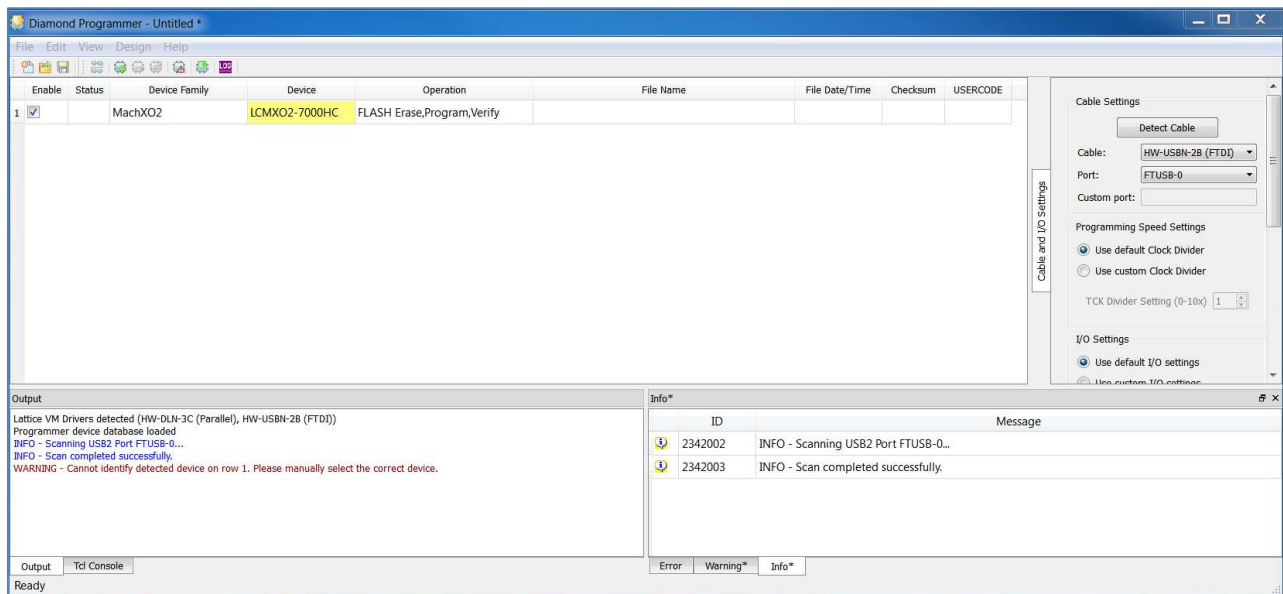


Figure 5.12. ASC Socket – Scanned MachXO2 Device

2. Double click in the box under **Operation** as shown in [Figure 5.13](#).

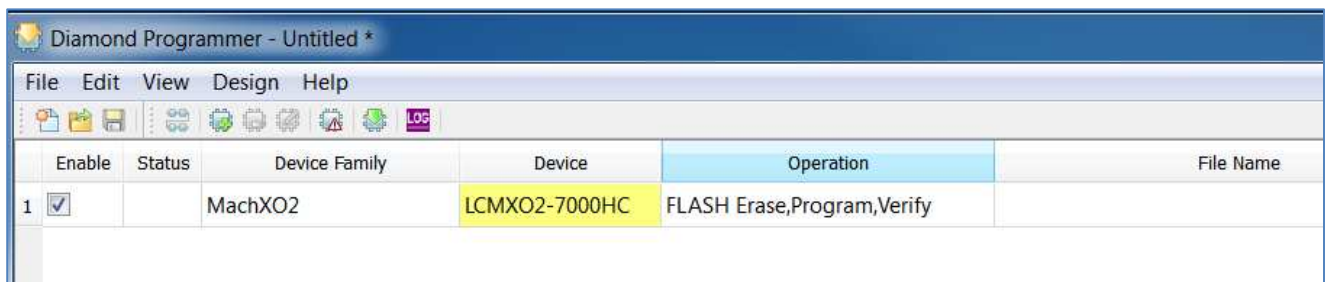


Figure 5.13. ASC Socket – Operation

3. The **Device Properties** dialog box appears as shown in [Figure 5.14](#). In the **Access Mode** dropdown list, select **PTM Programming**. Note that in the main interface, **PTM Bypass** is indicated under **Operation**.

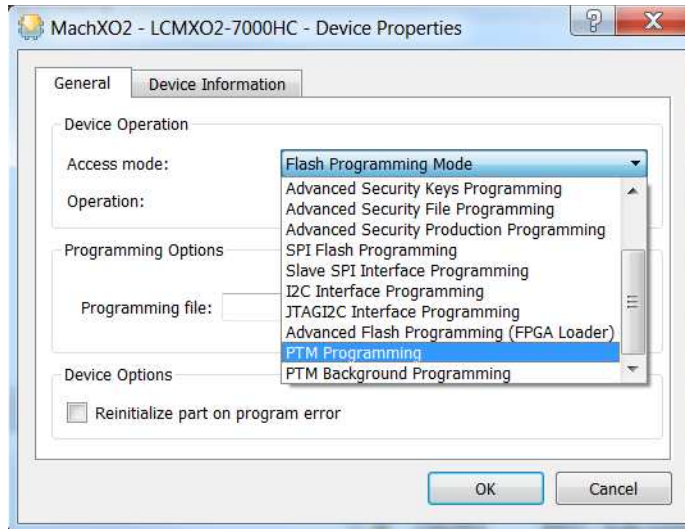



Figure 5.14. ASC Socket – Device Properties

4. Add an external ASC device, by clicking the  button as shown in Figure 5.15. The **Device Properties** dialog box appears as shown in Figure 5.16.

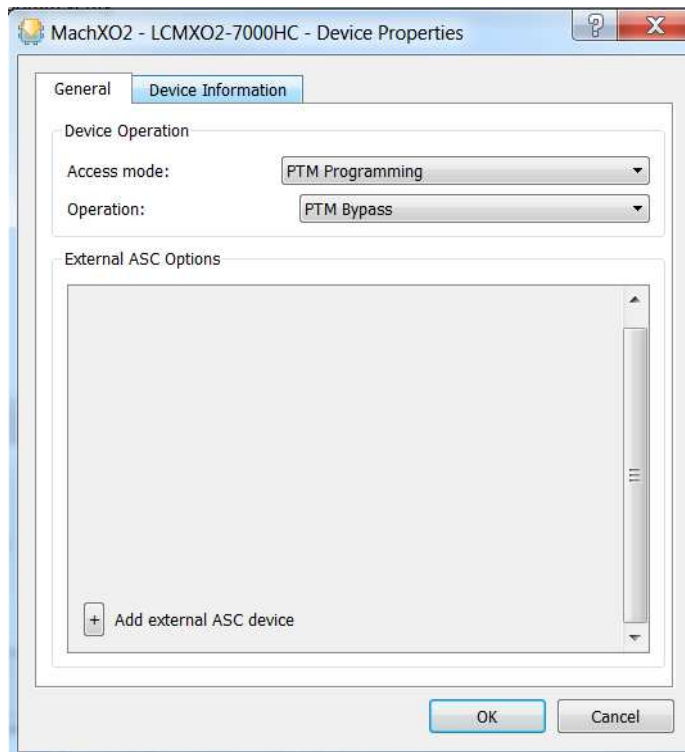


Figure 5.15. ASC Socket – Add External ASC Device

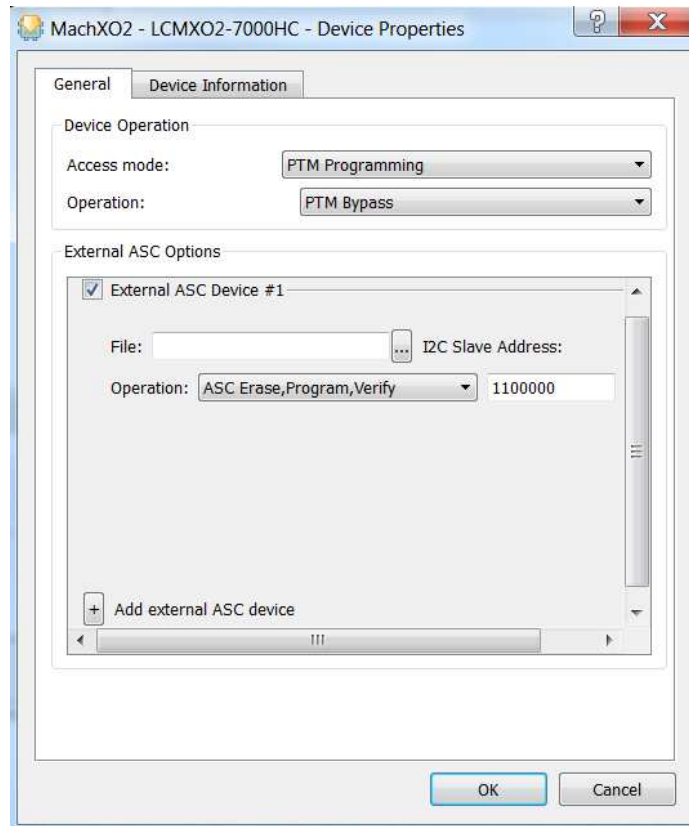



Figure 5.16. ASC Socket – ASC File Load Menu

5. Select the programming file by clicking the **Browse** button . In the **Device Properties** dialog box, select the *ASCx.hex file.
6. From the **Operation** dropdown list, select **ASC Erase, Program, Verify**.

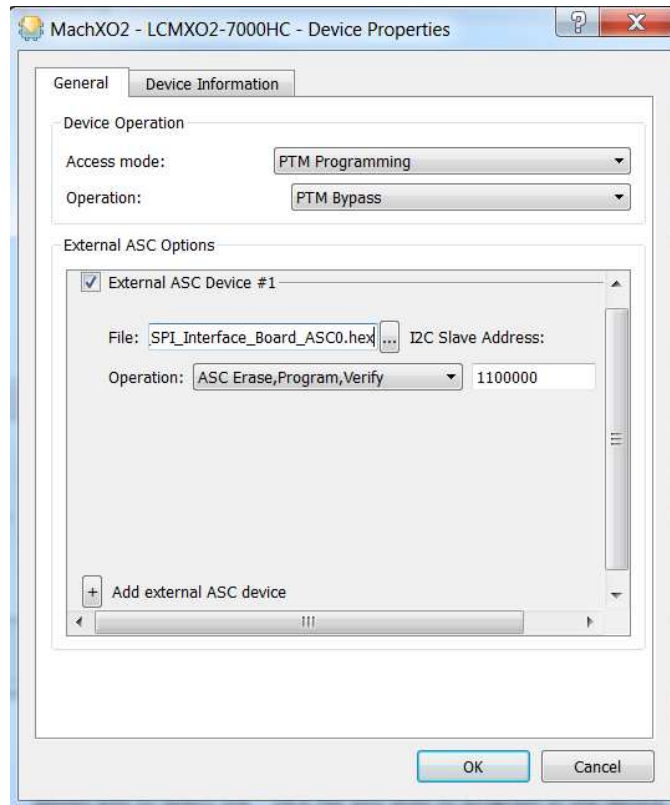


Figure 5.17. ASC Socket – Operation Menu

The warning shown in Figure 5.18 may appear if the selected external ASC device and the File targeting device do not match.

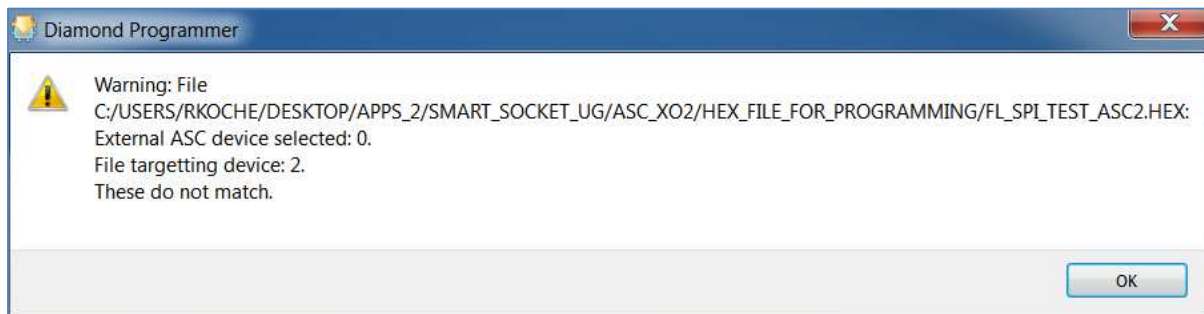


Figure 5.18. Warning

7. Click **OK**. The same warning appears in the output console window as shown Figure 5.19.

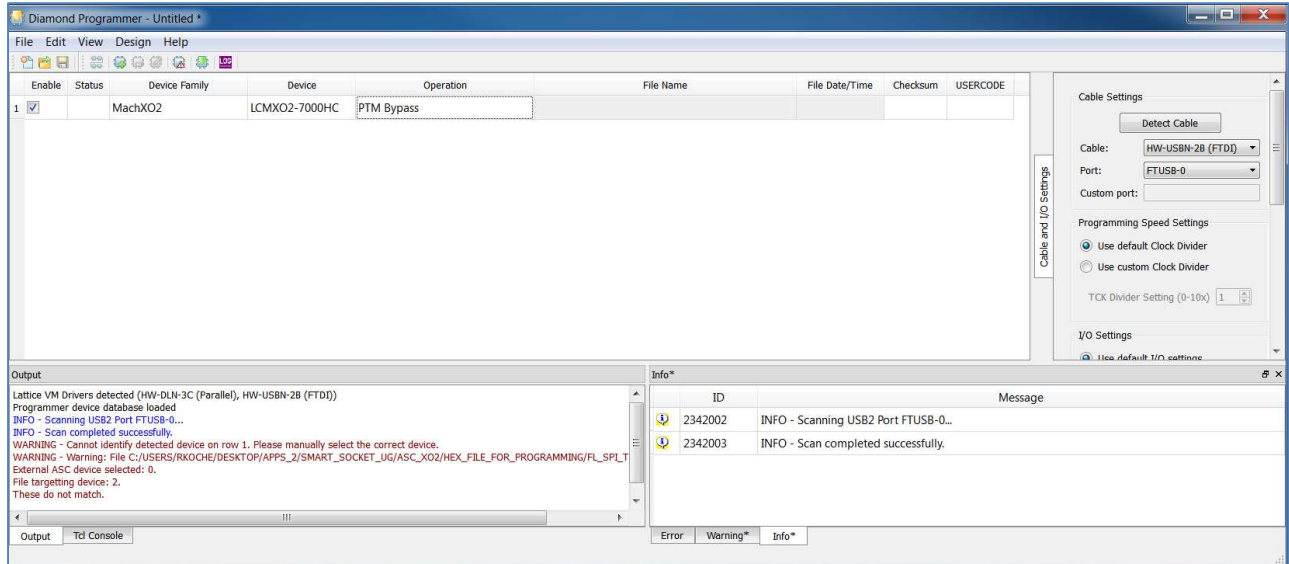


Figure 5.19. ASC Socket – Warning for MachXO2

Under **Operation**, **PTM Bypass** is indicated. The **File Name** field is greyed out (to prevent adding a new file) as shown in Figure 5.20.

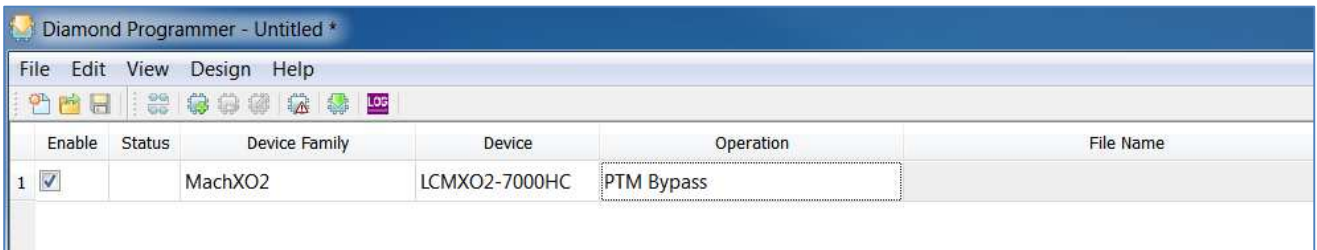



Figure 5.20. ASC Socket – Ready to Program Step

- Program the ASC device through the MachXO2 device on the Smart Socket board by clicking the **Program** icon  as shown in Figure 5.21.

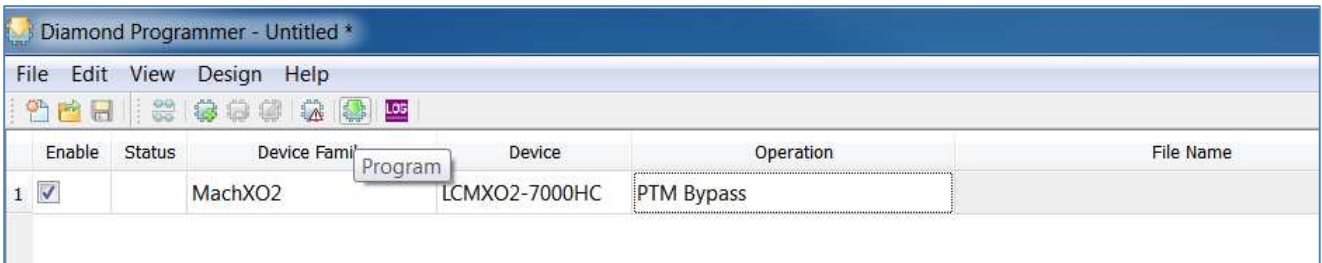


Figure 5.21. ASC Socket – Programming

- When the programming of the device is completed, the **Status** option changes to **PASS** and **Operation: successful** message appears in the **Output** console as shown in Figure 5.22. During the programming activity the MXO2_SDA and MXO2_SCL LED light blink on the board showing communication between the MachXO2 and ASC devices. *Done* is not a dedicated output in the MachXO2 family. *Done* LED indication is not supported.

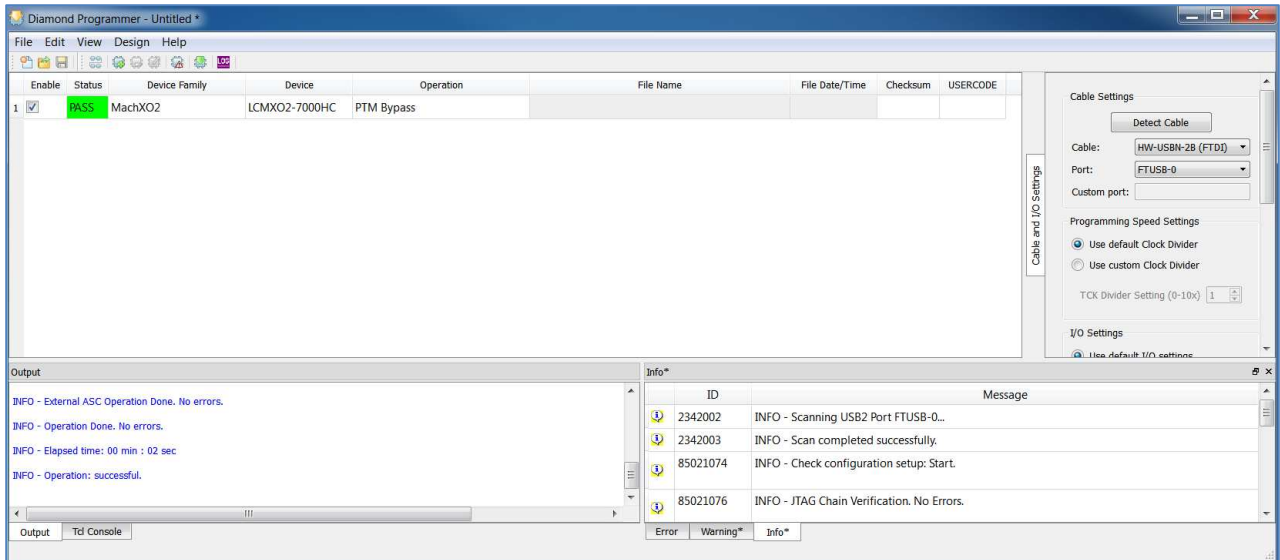


Figure 5.22. ASC Socket – Programming Completed

5.2.4. iCE40 Device Family Programming

To program the iCE40 device:

1. Launch the Lattice Diamond Programmer software.

The scanning of the device fails because the Scan operation is supported over JTAG interface only, and the iCE40 family of devices uses SPI interface for programming. See [Figure 5.23](#).

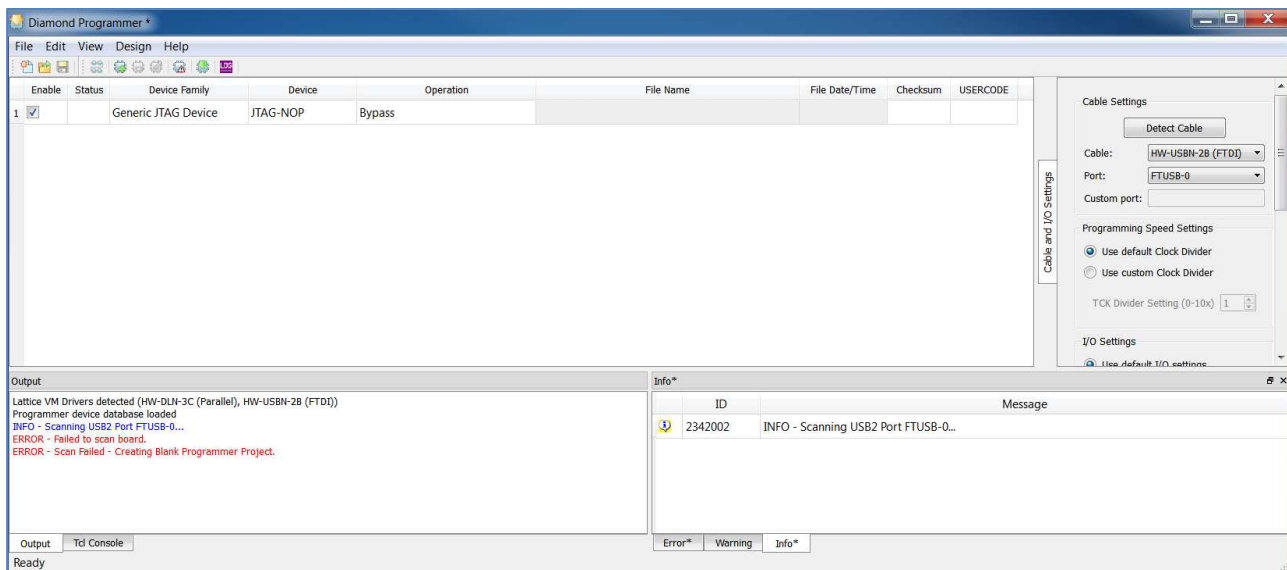


Figure 5.23. iCE40 Family – Scanning Failed

2. Manually select the device by choosing the following options as shown in [Figure 5.24](#).
 - **Device Family:** iCE5LP (select the appropriate device from the dropdown list)
 - **Device:** iCE5LP1K (choose the size of the device based on the device present in the socket)

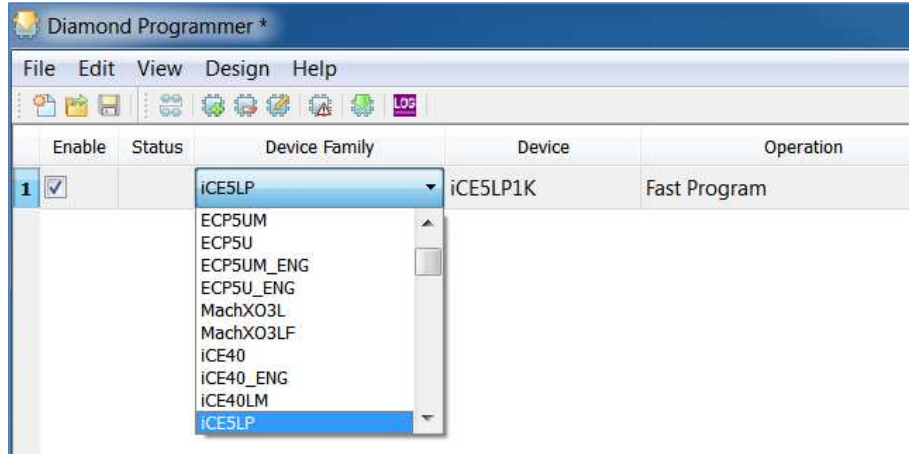
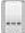


Figure 5.24. iCE40 Family – Device Family List

3. Select the programming file to program the iCE40 device by double clicking the **Browse** button  under **File Name** as shown in Figure 5.25.

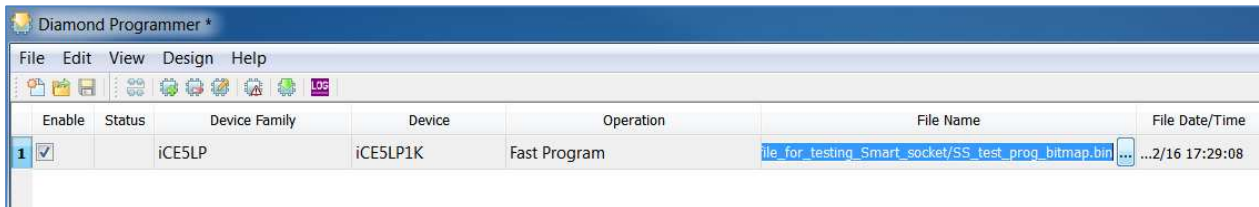



Figure 5.25. iCE40 Family – Select the Programming File

4. Click the **Program** icon  to program the device as shown in Figure 5.26.

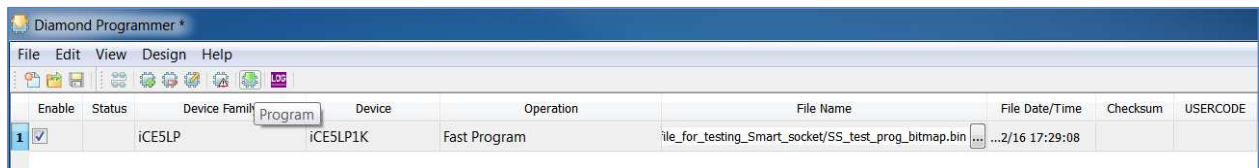


Figure 5.26. iCE40 Family – Program Icon

5. When the programming of the device is completed, the **Status** option changes to **PASS** and **Operation: successful** message appears in the **Output** console as shown in Figure 5.27.

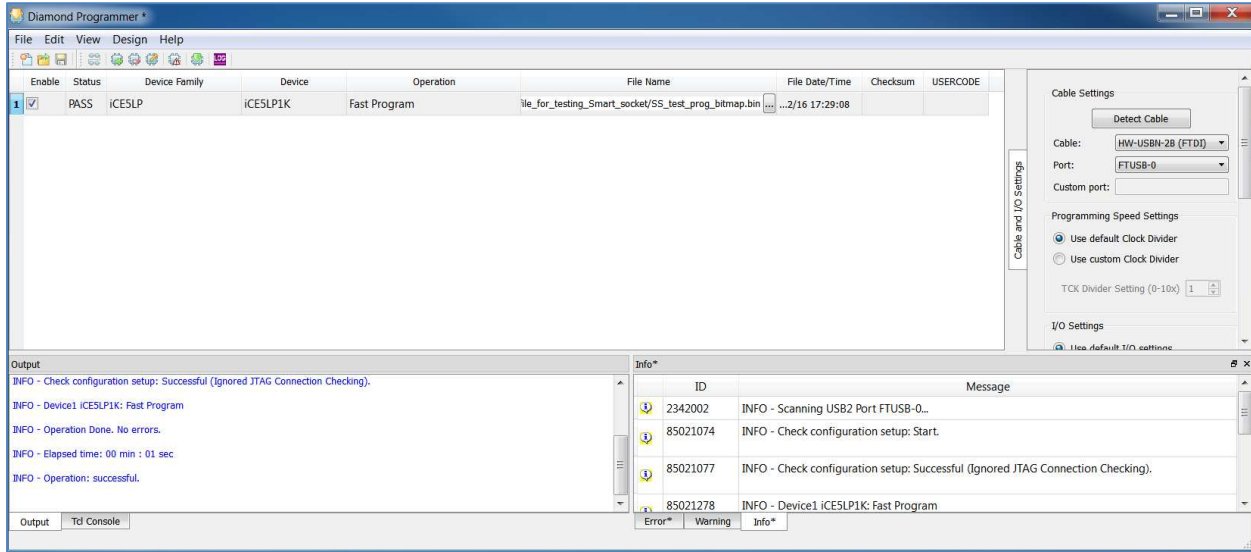


Figure 5.27. iCE40 Family – Programming Completed Successfully

5.2.5. CrossLink Device Family Programming

To program the CrossLink Device:

1. Launch the Lattice Diamond Programmer software.

The scanning of the device fails as the Scan operation is supported over JTAG interface only, and the CrossLink family of devices uses SPI interface for programming. See [Figure 5.28](#).

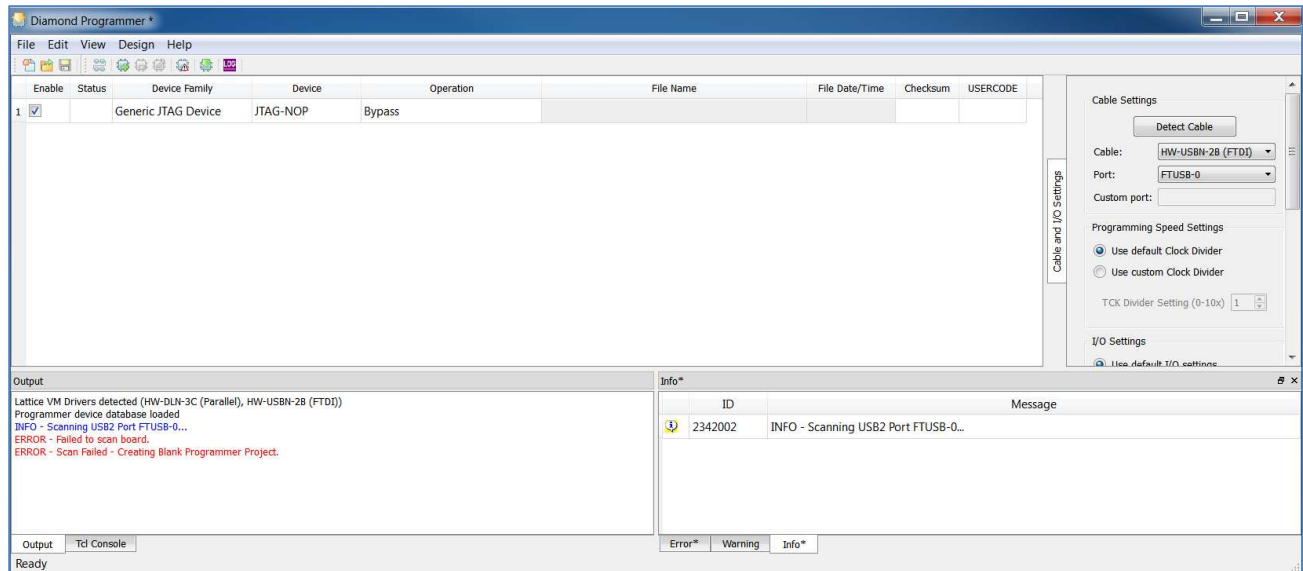


Figure 5.28. CrossLink Family – Scanning Failed

2. Manually select the device by choosing the following options as shown in [Figure 5.29](#).
 - **Device Family:** LIFMD (select the appropriate device from the dropdown list)
 - **Device:** LIF-MD6000 or LIA-MD6000 (choose between industrial or automotive grade of CrossLink based on the device present in the socket)

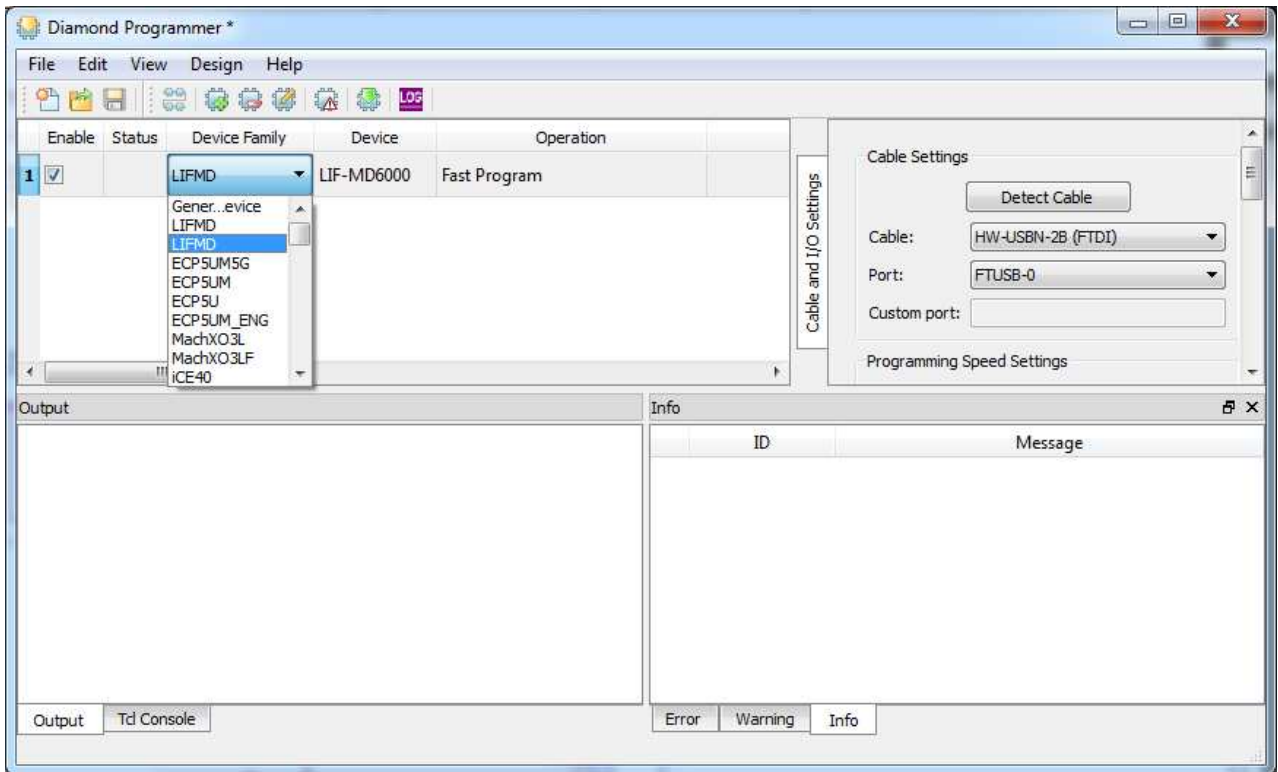


Figure 5.29. CrossLink Family – Device Family List

3. Select the programming file that you want to program in the CrossLink device by double clicking the **Browse** button under **File Name** as shown in Figure 5.30.

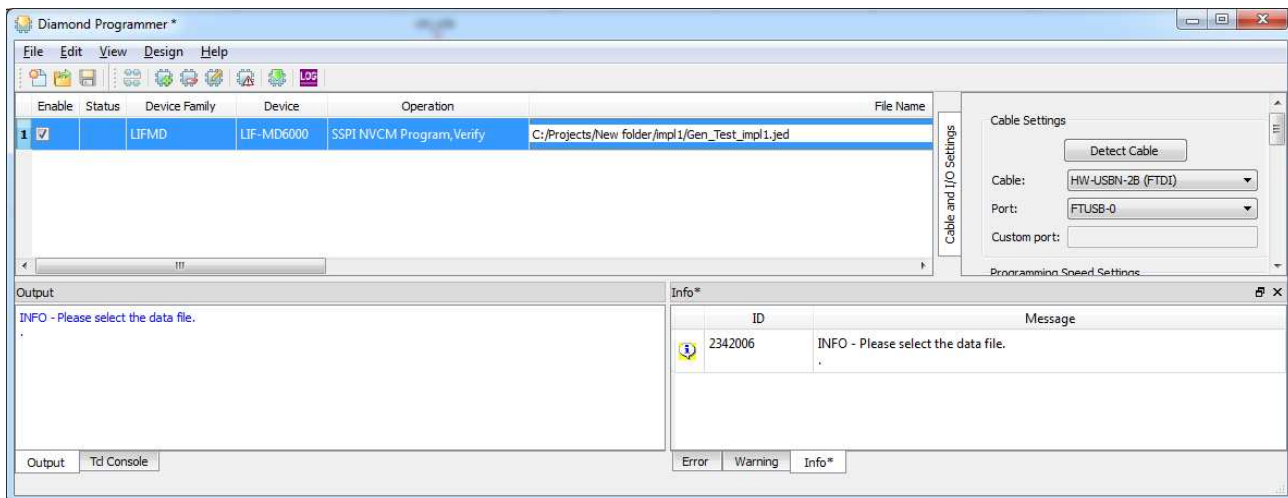


Figure 5.30. CrossLink Family – Select the Programming File

4. Click the **Program** icon  to program the device as shown in Figure 5.31.

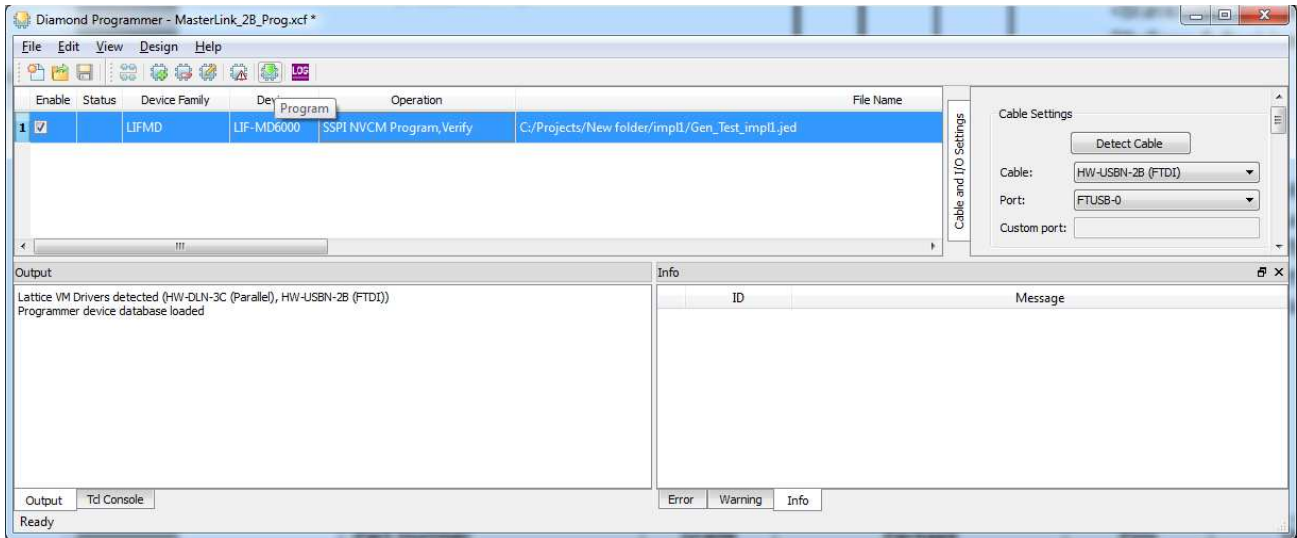


Figure 5.31. CrossLink Family – Program Icon

- When the programming of the device is completed, the **Status** option changes to **PASS** and **Operation: successful** message appears in the **Output** console as shown in Figure 5.32.

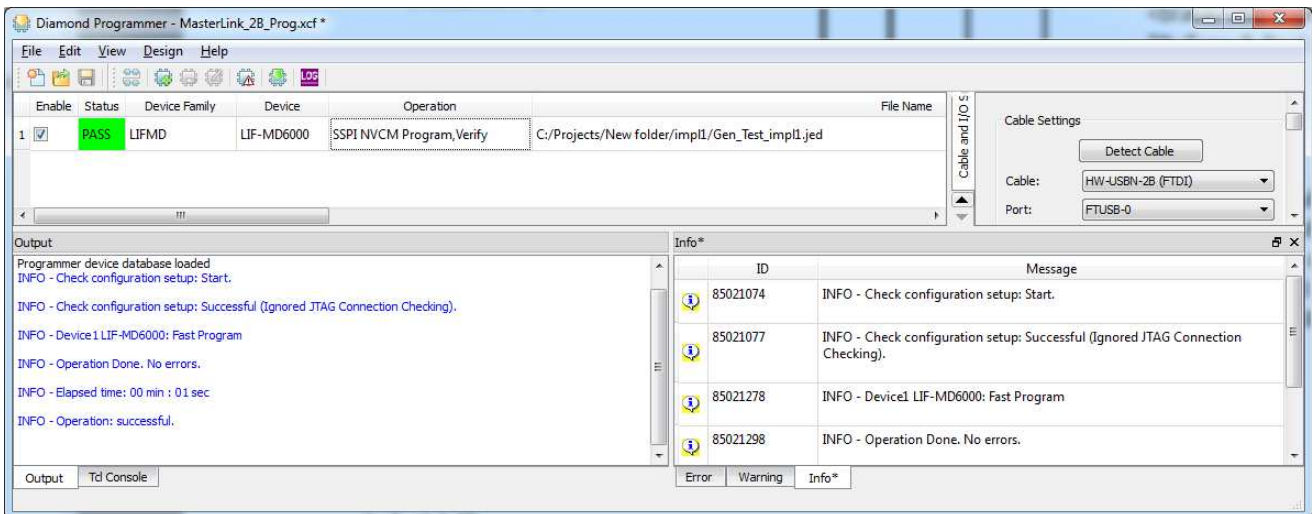


Figure 5.32. CrossLink Family – Programming Completed Successfully

6. Ordering Information

Ordering part numbers for a particular socket are available at <http://www.latticesemi.com/sockets>

Technical Support

For assistance, submit a technical support case at www.latticesemi.com/techsupport

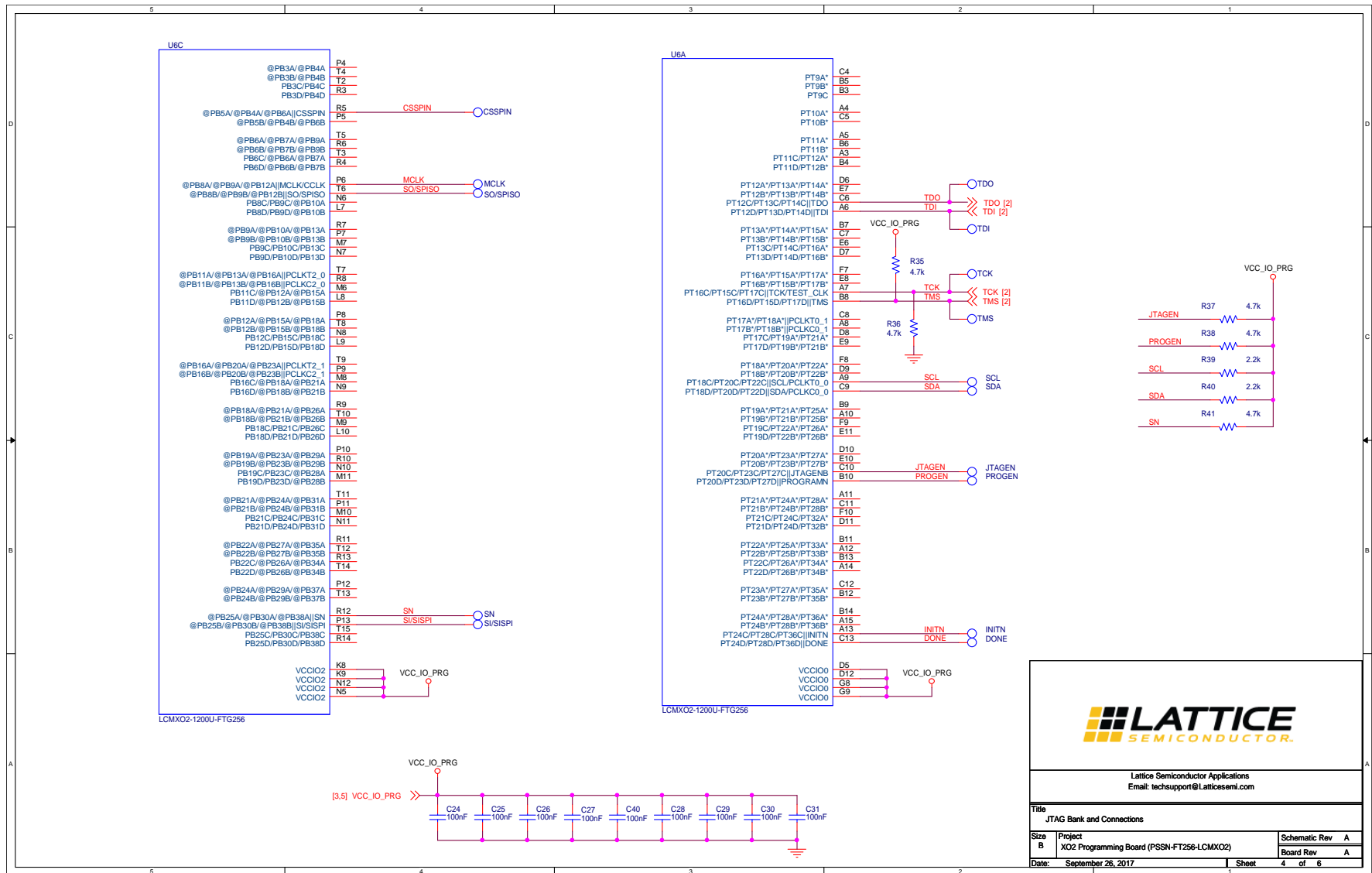


Figure A.3. JTAG Bank and Connections