



Chipsmall Limited consists of a professional team with an average of over 10 year of expertise in the distribution of electronic components. Based in Hongkong, we have already established firm and mutual-benefit business relationships with customers from,Europe,America and south Asia,supplying obsolete and hard-to-find components to meet their specific needs.

With the principle of “Quality Parts,Customers Priority,Honest Operation,and Considerate Service”,our business mainly focus on the distribution of electronic components. Line cards we deal with include Microchip,ALPS,ROHM,Xilinx,Pulse,ON,Everlight and Freescale. Main products comprise IC,Modules,Potentiometer,IC Socket,Relay,Connector.Our parts cover such applications as commercial,industrial, and automotives areas.

We are looking forward to setting up business relationship with you and hope to provide you with the best service and solution. Let us make a better world for our industry!



Contact us

Tel: +86-755-8981 8866 Fax: +86-755-8427 6832

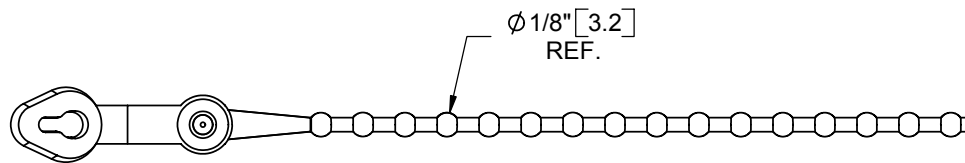
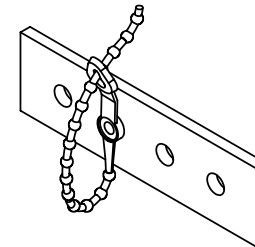
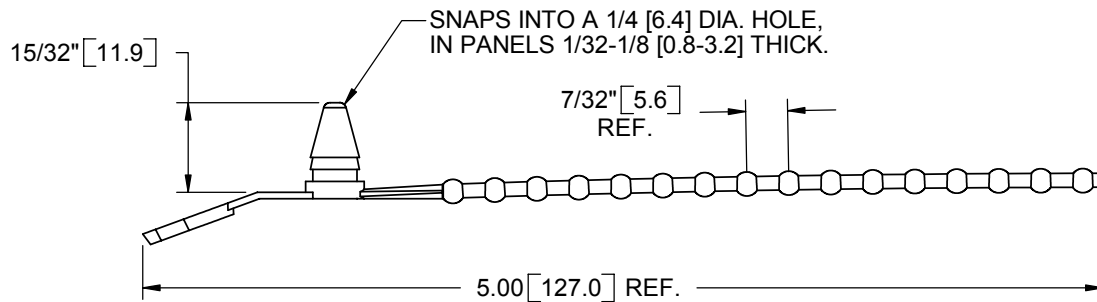
Email & Skype: info@chipsmall.com Web: www.chipsmall.com

Address: A1208, Overseas Decoration Building, #122 Zhenhua RD., Futian, Shenzhen, China



POLYPROPYLENE (RMS-10)	NYLON 6/6 (RMS-01)	FLAME RETARDANT (RMS-19)	COLOR	BUNDLE DIA. RANGE
PT-200	PT-300	-----	RED	1/4 - 1-1/4 [6.4-31.8]
*PT-201	*PT-301	-----	BLUE	
*PT-202	*PT-302	-----	YELLOW	
PT-203	PT-303	-----	BLACK	
PT-205	PT-305	PT-405	NATURAL	

*PARTS AVAILABLE BY SPECIAL ORDER ONLY



TITLE: PUSHBUTTON WIRE TIES					DWG IN IN	
CREATED USING SOLIDWORKS	FILE #: PT	DWN: SM	APP: -	FINAL		
TOLERANCES UNLESS NOTED .XX=±.010 .XXX=±.005 FRAC.=±1/64 ANG.=±1°	SHEET: 1 OF 1	SHEET SIZE: A	DT: 02/18/04	CHKD: -	PART #	PRINT TYPE
	RE: RICHCO, INC.	RICHCO, INC. ENG@RICHCO-INC.COM (773) 539-4060		SEE TABLE	CA	

REV.	DESCRIPTION	ENGR.	DATE
F	SEE ECN #914 FOR CHANGES	SK	01/14/05
E	SEE ECN #818 FOR CHANGES	SM	10/01/04
D	COMPLETELY REDRAWN. SEE ECN #766	SM	02/18/04
-	SEE ENGINEERING FOR REV A-C	-	----