



Chipsmall Limited consists of a professional team with an average of over 10 year of expertise in the distribution of electronic components. Based in Hongkong, we have already established firm and mutual-benefit business relationships with customers from,Europe,America and south Asia,supplying obsolete and hard-to-find components to meet their specific needs.

With the principle of “Quality Parts,Customers Priority,Honest Operation,and Considerate Service”,our business mainly focus on the distribution of electronic components. Line cards we deal with include Microchip,ALPS,ROHM,Xilinx,Pulse,ON,Everlight and Freescale. Main products comprise IC,Modules,Potentiometer,IC Socket,Relay,Connector.Our parts cover such applications as commercial,industrial, and automotives areas.

We are looking forward to setting up business relationship with you and hope to provide you with the best service and solution. Let us make a better world for our industry!



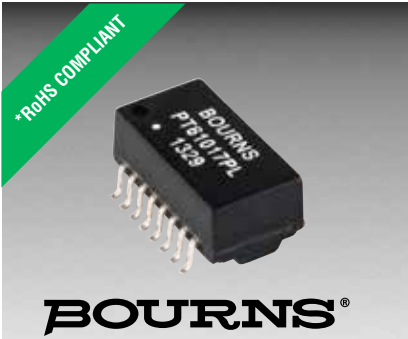
Contact us

Tel: +86-755-8981 8866 Fax: +86-755-8427 6832

Email & Skype: info@chipsmall.com Web: www.chipsmall.com

Address: A1208, Overseas Decoration Building, #122 Zhenhua RD., Futian, Shenzhen, China





Features

- IEEE 802.3 Ethernet compatible
- Designed for AMD IC manufacturers
- Fully integrated for adapter, hub and motherboard applications
- RoHS compliant*

Applications

- LAN (Local Area Network)
- Ethernet

PT61017PEL LAN 10/100 Base-Tx

Electrical Specifications @ 25 °C

Turns Ratio ± 5%.....1CT*:1CT*
Inductance
Pin 1-3, 6-8 ..350 μH min. @ 100 KHz,
0.2 Vrms, 8 mA DC Bias

DCR
Pin 1-3, 6-8 0.6 Ω max.
Pin 9-11, 14-16..... 1.1 Ω max.

Insertion Loss
0.3-100 MHz -1.15 dB max.

Return Loss
30 MHz.....-18 dB min.
60 MHz.....-12 dB min.
100 MHz.....-10 dB min.

Common Mode Rejection
30 MHz.....-40 dB Min.
60 MHz.....-35 dB Min.
100 MHz.....-30 dB Min.

Crosstalk
1-60 MHz-45 dB Min.
60-100 MHz-35 dB Min.

Hipot
1 mA, 2 sec.1500 VAC (PRI-SEC)

Operating Temperature0 °C to +70 °C
Storage Temperature.. -25 °C to +125 °C

*CT: Center tap

Material

Termination Tin

Packaging Specifications

Tape & Reel 600 pcs./reel

How To Order

PT61017 P E L

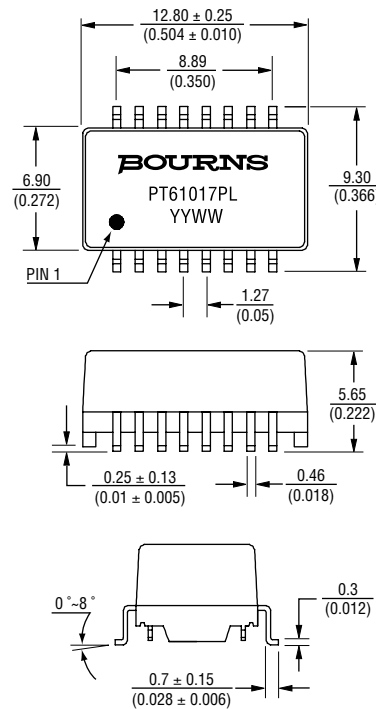
Model _____

Construction _____
P = Potted

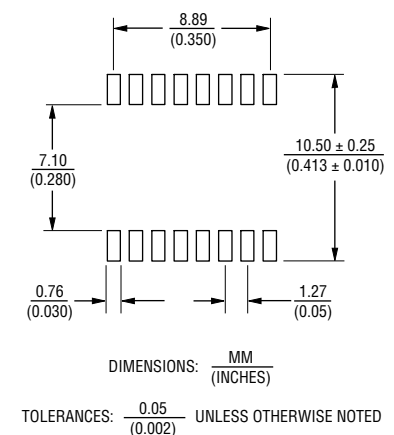
Packaging _____
E = Tape and Reel (600 pcs./reel)

Termination _____
L = Tin only (RoHS Compliant)

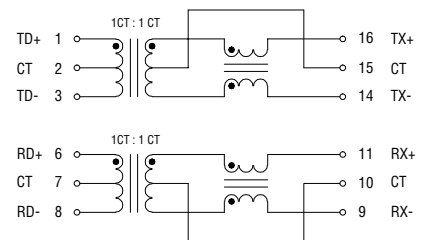
Product Dimensions



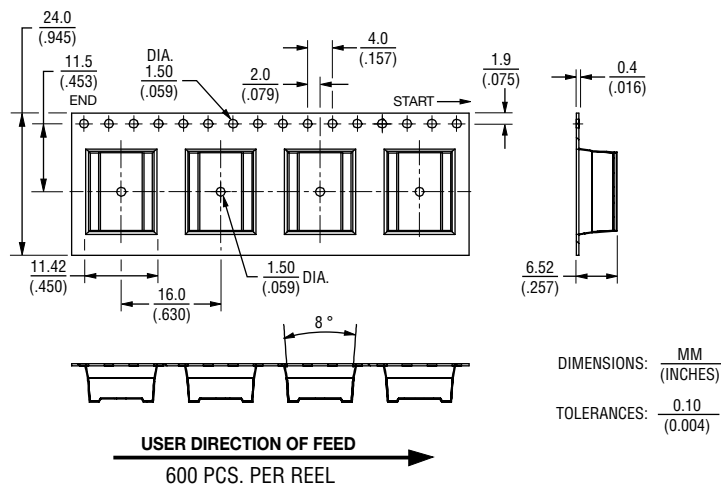
Recommended Layout



Electrical Schematic



Packaging Specifications



REV. 02/16

*RoHS Directive 2002/95/EC Jan. 27, 2003 including annex and RoHS Recast 2011/65/EU June 8, 2011.

Specifications are subject to change without notice.

The device characteristics and parameters in this data sheet can and do vary in different applications and actual device performance may vary over time.

Users should verify actual device performance in their specific applications.