



Chipsmall Limited consists of a professional team with an average of over 10 year of expertise in the distribution of electronic components. Based in Hongkong, we have already established firm and mutual-benefit business relationships with customers from,Europe,America and south Asia,supplying obsolete and hard-to-find components to meet their specific needs.

With the principle of “Quality Parts,Customers Priority,Honest Operation,and Considerate Service”,our business mainly focus on the distribution of electronic components. Line cards we deal with include Microchip,ALPS,ROHM,Xilinx,Pulse,ON,Everlight and Freescale. Main products comprise IC,Modules,Potentiometer,IC Socket,Relay,Connector.Our parts cover such applications as commercial,industrial, and automotives areas.

We are looking forward to setting up business relationship with you and hope to provide you with the best service and solution. Let us make a better world for our industry!



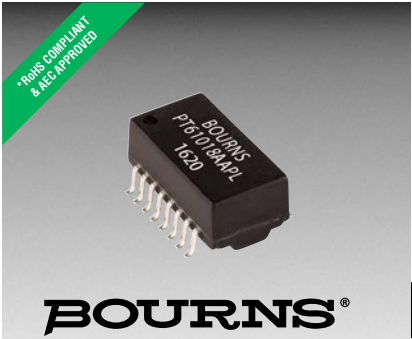
Contact us

Tel: +86-755-8981 8866 Fax: +86-755-8427 6832

Email & Skype: info@chipsmall.com Web: www.chipsmall.com

Address: A1208, Overseas Decoration Building, #122 Zhenhua RD., Futian, Shenzhen, China





Features

- IEEE 802.3 Ethernet compatible
- Fully integrated for adapter, hub and motherboard applications
- Extended temperature range: -40 to +85 °C
- AEC-Q200 Qualified, automotive grade
- RoHS compliant*

Applications

- Automotive
- LAN
- Ethernet

PT61018AAPL-S - 10/100 Base-T Transformer

Electrical Specifications @ 25 °C

Inductance - OCL
 350 μ H min. @ 100 kHz,
 0.1 Vrms, 8 mA DC Bias

Turns Ratio ($\pm 5\%$)1CT*:1CT*

DCR..... 1.2 Ω Max.

Insertion Loss
 1-100 MHz -1.15 dB Max.

Return Loss
 1-30 MHz -18 dB Min.
 30-60 MHz -13 dB Min.
 60-80 MHz -12 dB Min.

Common Mode Rejection
 1-60 MHz -37 dB Min.
 60-100 MHz -28 dB Min.

Cross Talk
 1-60 MHz -40 dB Min.
 60-100 MHz -35 dB Min.

Hipot
 @1 mA, 60 sec. 1.5k Vrms

Operating Temperature -40 to +85 °C

Storage Temperature..... -40 to +125 °C

*CT: Center tap

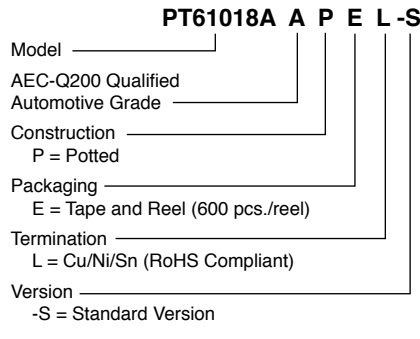
Material

Termination.....Cu/Ni/Sn

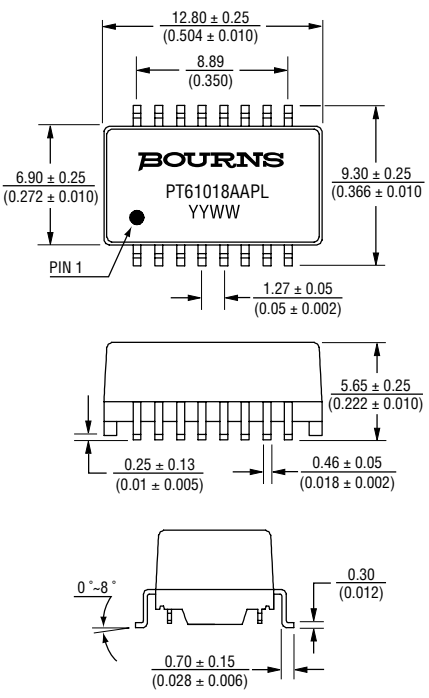
Packaging Specifications

Tape & Reel 600 pcs./reel

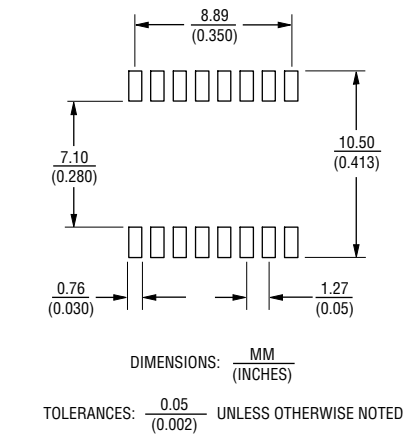
How To Order



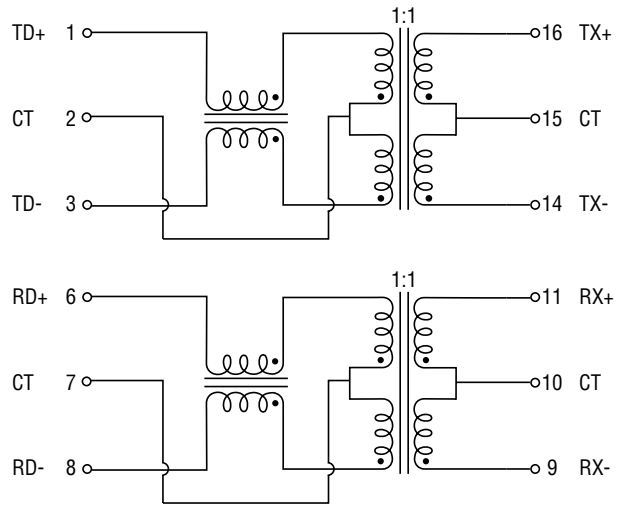
Product Dimensions



Recommended Layout



Electrical Schematic



Asia-Pacific:
 Tel: +886-2 2562-4117
 Email: asiacus@bourns.com

Europe:
 Tel: +36 88 520 390
 Email: eurocus@bourns.com

The Americas:
 Tel: +1-951 781-5500
 Email: americus@bourns.com

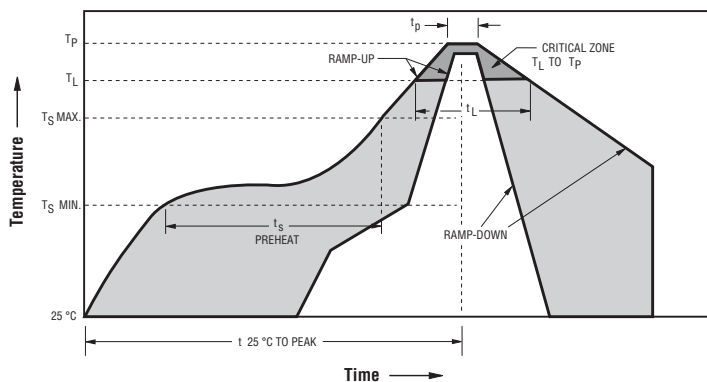
www.bourns.com

*RoHS Directive 2002/95/EC Jan. 27, 2003 including annex and RoHS Recast 2011/65/EU June 8, 2011. Specifications are subject to change without notice. The device characteristics and parameters in this data sheet can and do vary in different applications and actual device performance may vary over time. Users should verify actual device performance in their specific applications.

PT61018AAPEL-S - 10/100 Base-T Transformer

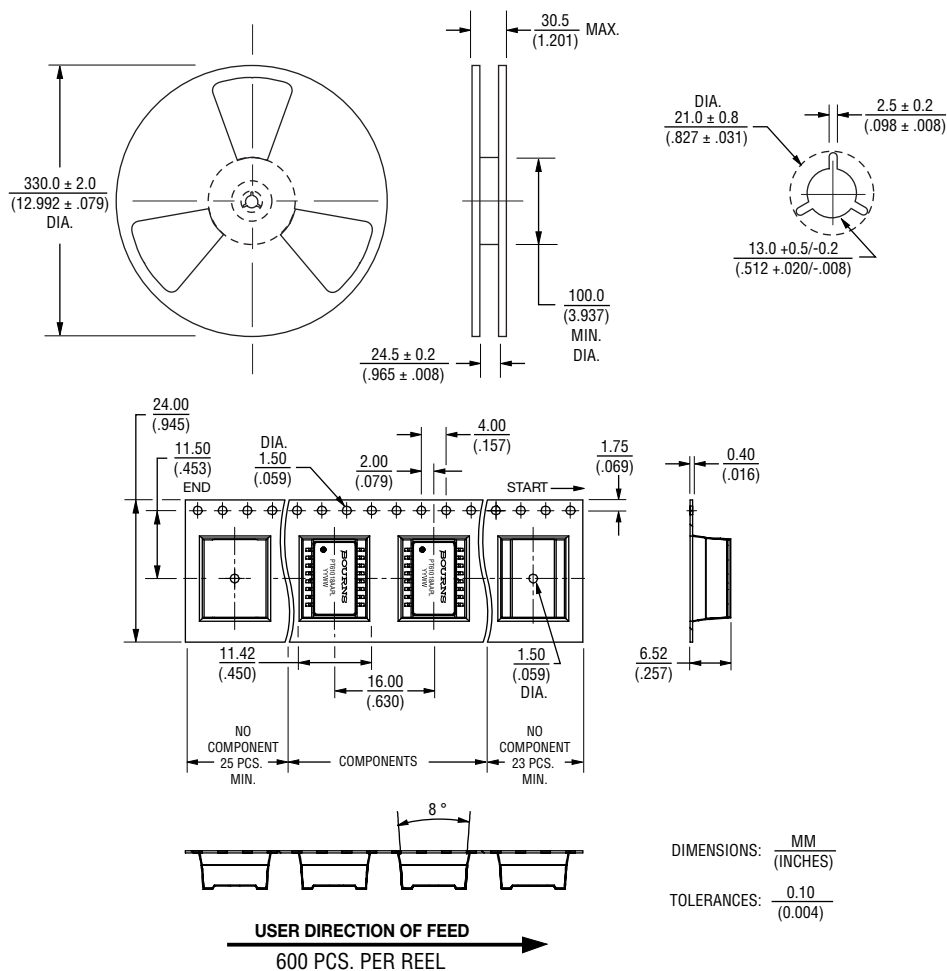
BOURNS®

Solder Profile



Ramp-up rate = 3 °C/sec. max.
 Ramp-down rate = 6 °C/sec. max.
 $T_L = 217\text{ °C}$ $t_L = 60\text{-}150\text{ sec.}$
 $T_P = 245\text{ °C} \pm 5\text{ °C}$
 Time within 5 °C of actual Peak Temp (t_p) = 20-40 sec.
 $T_S\text{ min} = 150\text{ °C}$ $T_S\text{ max} = 200\text{ °C}$
 $T_S\text{ min to } T_S\text{ max} = 60\text{-}180\text{ sec.}$, 25 °C to Peak Temperature = 6 min. max.

Packaging Specifications



01/17

Specifications are subject to change without notice.
 The device characteristics and parameters in this data sheet can and do vary in different applications and actual device performance may vary over time.
 Users should verify actual device performance in their specific applications.