



Chipsmall Limited consists of a professional team with an average of over 10 year of expertise in the distribution of electronic components. Based in Hongkong, we have already established firm and mutual-benefit business relationships with customers from,Europe,America and south Asia,supplying obsolete and hard-to-find components to meet their specific needs.

With the principle of “Quality Parts,Customers Priority,Honest Operation,and Considerate Service”,our business mainly focus on the distribution of electronic components. Line cards we deal with include Microchip,ALPS,ROHM,Xilinx,Pulse,ON,Everlight and Freescale. Main products comprise IC,Modules,Potentiometer,IC Socket,Relay,Connector.Our parts cover such applications as commercial,industrial, and automotives areas.

We are looking forward to setting up business relationship with you and hope to provide you with the best service and solution. Let us make a better world for our industry!



Contact us

Tel: +86-755-8981 8866 Fax: +86-755-8427 6832

Email & Skype: info@chipsmall.com Web: www.chipsmall.com

Address: A1208, Overseas Decoration Building, #122 Zhenhua RD., Futian, Shenzhen, China



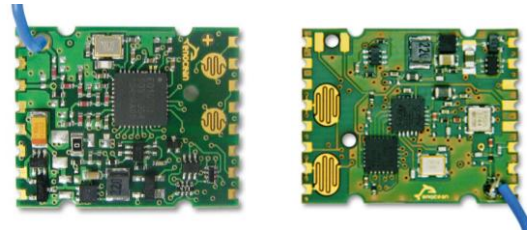
PTM 330 / PTM 335 / PTM 330U / PTM 430J
Sub GHz Transmitter Modules

PTM radio transmitter modules enable easy implementation of wireless sensors and switches without batteries.

PTM radio transmitter modules are designed to work with the EnOcean ECO 200 or ECO 250 linear motion energy harvester. An external energy pulse of min. 120uWs powers the radio module to send EnOcean radio telegrams. It transmits a unique module ID, the polarity of the energy pulse, and the operating status of 4 digital inputs. The repeated switch telegram content can be configured.

PTM transmitter module can be connected to ECO via a contact spring. There are two meander structures on the PCB which allow usage of a rubber pad to set the level of two digital inputs.

Alternatively PTM can be mounted as SMD module onto a host PCB. In this case power supply pins and digital input pins are accessible via contact pads.



PTM 335 additionally can protect the outgoing communication with enhanced security features like rolling code with AES128 encryption.

There are three frequency variants available:

- 868,300MHz: PTM 330
- 868,300MHz: PTM 335
- 902.875MHz: PTM 330U
- 928.350MHz: PTM 430J

Type	Ordering Code
PTM 330	S3001-A330
PTM 335	S3001-A335
PTM 330U	S3051-A330
PTM 430J	S3061-A430

Power supply	ECO 2x0 or equivalent energy pulse
Antenna	pre-installed whip antenna
Frequency	PTM 33x: 868.300 MHz (ASK) PTM 330U: 902.875 MHz (FSK) PTM 430J: 928,350 MHz (FSK)
Transmission power (antenna base)	PTM 33x: typ. 3 dBm (300m/30m)
Radio range (free field/indoor)	PTM 330U: typ. 1 dBm (300m/30m) PTM 430J: typ. 0 dBm (200m/20m)
Data rate	125 kBit/s
EnOcean Equipment Profile	PTM 330: EEP F6-02-xx, F6-04-xx PTM 335: EEP F6-02-xx, F6-04-xx or secure D2-03-00 PTM 430J: F6-02-04
Digital inputs	4
Mode switch (standard and enhanced security)	3 pins PTM 335 only
Transmission range	up to 200 m free field, up to 30 m indoor
Module dimensions	26.2 x 21.15 x 3.5 mm
Operating temperature	-25 up to +65 °C
Radio approvals	PTM 33x: R&TTE / EN 300 220 PTM 330U: IC/FCC CFR-47 Part 15 PTM 430J: RIB STD-T108