



Chipsmall Limited consists of a professional team with an average of over 10 year of expertise in the distribution of electronic components. Based in Hongkong, we have already established firm and mutual-benefit business relationships with customers from,Europe,America and south Asia,supplying obsolete and hard-to-find components to meet their specific needs.

With the principle of “Quality Parts,Customers Priority,Honest Operation,and Considerate Service”,our business mainly focus on the distribution of electronic components. Line cards we deal with include Microchip,ALPS,ROHM,Xilinx,Pulse,ON,Everlight and Freescale. Main products comprise IC,Modules,Potentiometer,IC Socket,Relay,Connector.Our parts cover such applications as commercial,industrial, and automotives areas.

We are looking forward to setting up business relationship with you and hope to provide you with the best service and solution. Let us make a better world for our industry!



Contact us

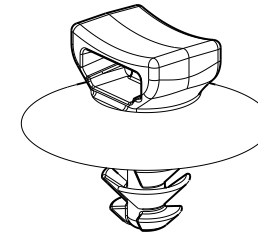
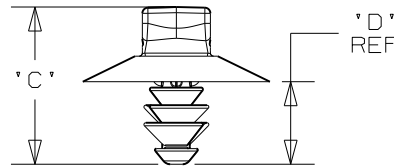
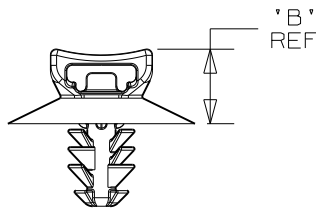
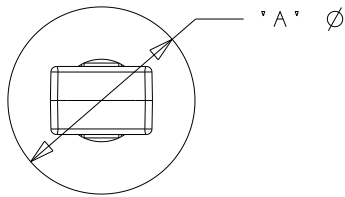
Tel: +86-755-8981 8866 Fax: +86-755-8427 6832

Email & Skype: info@chipsmall.com Web: www.chipsmall.com

Address: A1208, Overseas Decoration Building, #122 Zhenhua RD., Futian, Shenzhen, China



PANDUIT PART NUMBER	USED WITH CABLE TIES	DIMENSIONS				WEIGHT grams/100pcs
		'A'	'B' (REF)	'C'	'D' (REF)	
PUM-049- <u> </u>	M, I, S	16.5	6.6	13.8	7.2	33 g



SCALE 2:1

NOTES:

1. SEE WWW.PANDUIT.COM FOR PART NUMBER SUFFIX DESIGNATION FOR PACKAGE SIZE, MATERIAL AND COLOR.
2. (*) DIMENSIONAL VARIANCE IS POSSIBLE DUE TO MOLDING PROCESS RELATED SINK MARKS.
3. APPLICATION SPECIFICATION:
 HOLE DIAMETER: 4.6 - 4.9 mm
 PANEL THICKNESS: 0.7 - 3.0 mm

CAD FILENAME/LAYERS 10B015CV/01_DC_GB0239ML_REV06



TINLEY PARK, ILLINOIS

PUM-049
 PUSH UMBRELLA MOUNT 049

UNLESS OTHERWISE SPECIFIED, ALL DIMENSIONS ARE METRIC TOLERANCE: ±0.5MM

DRAWN BY TMSA

MAT'L:

SCALE 1:1 UNLESS NOTED

DATE 8-11-06

NYLON 6/6

DRAWING NO.

GB0239ML

DWG SIZE A

CHK'D

REV	DATE	BY	CHK	DESCRIPTION	ECN	R	CUST	SUP
6	3/08/11	BWG	MPH	CHANGED MATERIAL NOTE. REMOVED MATERIAL BOX FROM CHART.	GB0239ML	6	PBC	