



Chipsmall Limited consists of a professional team with an average of over 10 year of expertise in the distribution of electronic components. Based in Hongkong, we have already established firm and mutual-benefit business relationships with customers from,Europe,America and south Asia,supplying obsolete and hard-to-find components to meet their specific needs.

With the principle of “Quality Parts,Customers Priority,Honest Operation,and Considerate Service”,our business mainly focus on the distribution of electronic components. Line cards we deal with include Microchip,ALPS,ROHM,Xilinx,Pulse,ON,Everlight and Freescale. Main products comprise IC,Modules,Potentiometer,IC Socket,Relay,Connector.Our parts cover such applications as commercial,industrial, and automotives areas.

We are looking forward to setting up business relationship with you and hope to provide you with the best service and solution. Let us make a better world for our industry!



## Contact us

Tel: +86-755-8981 8866 Fax: +86-755-8427 6832

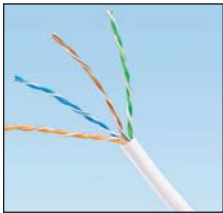
Email & Skype: info@chipsmall.com Web: www.chipsmall.com

Address: A1208, Overseas Decoration Building, #122 Zhenhua RD., Futian, Shenzhen, China



### TX5500™ Enhanced Category 5e UTP Copper Cable

- Exceeds requirements of ANSI/TIA-568-C.2 Category 5e and ISO 11801 2nd Edition Class D channel standards
- Exceeds requirements of ANSI/TIA-568-C.2 and IEC 61156-5 Category 5e component standards
- Third party tested to Category 5e channel compliance
- Meets requirements of IEEE 802.3af and IEEE 802.3at for PoE applications
- Cable diameter: Riser 0.225 in. (5.7mm) nominal, Plenum 0.193 in. (4.9mm) nominal
- Installation temperature range: 32°F to 122°F (0°C to 50°C)
- Operating temperature range: 14°F to 140°F (-10°C to 60°C)
- Channel characterized to 450 MHz, 350 MHz above the standard
- Descending length cable markings enable easy identification of remaining cable which reduces installation time and cable scrap
- Cable supplied in an easy payout box



PUR5504WH-UY

Part Number	Part Description	Color‡	Std. Pkg. Qty. (Ft.)	Std. Ctn. Qty. (Ft.)
<b>Riser</b>				
PUR5504BU-UY	Enhanced Category 5e, riser (CMR), 4-pair, UTP copper cable. Copper conductors are 24 AWG construction with polyolefin (PE) insulation. Conductors are twisted in pairs and protected by a flame-retardant PVC jacket.	Blue	1000	39000
<b>Plenum</b>				
PUP5504BU-UY	Enhanced Category 5e, plenum (CMP), 4-pair, UTP copper cable. Copper conductors are 24 AWG construction with FEP insulation. Conductors are twisted in pairs and placed in a low smoke, flame-retardant PVC jacket.	Blue	1000	39000

‡For standard colors other than Blue, replace BU (Blue) with WH (White), YL (Yellow), or IG (International Gray). Contact Customer Service for other color options.  
Order number of pieces required, in multiples of 13,000 feet.

### Labels for TX5500™ Enhanced Category 5e UTP Copper Cable



Suggested Label Solutions for TIA/EIA-606-A Compliance				
Cable Part Number	Laser/Ink Jet Desktop Printer Label	TDP43ME Thermal Transfer Desktop Printer Label	PanTher™ LS8E Hand-Held Printer Label	Cougar™ LS9 Hand-Held Printer Label
PUR5504**-UY PUP5504**-UY	S100X150YAJ	S100X150VATY	S100X150VAC	T100X000CBC-BK

For complete labeling solutions and product information, reference charts on pages O.1 – O.22 of SA-NCCB51.