



Chipsmall Limited consists of a professional team with an average of over 10 year of expertise in the distribution of electronic components. Based in Hongkong, we have already established firm and mutual-benefit business relationships with customers from,Europe,America and south Asia,supplying obsolete and hard-to-find components to meet their specific needs.

With the principle of “Quality Parts,Customers Priority,Honest Operation,and Considerate Service”,our business mainly focus on the distribution of electronic components. Line cards we deal with include Microchip,ALPS,ROHM,Xilinx,Pulse,ON,Everlight and Freescale. Main products comprise IC,Modules,Potentiometer,IC Socket,Relay,Connector.Our parts cover such applications as commercial,industrial, and automotives areas.

We are looking forward to setting up business relationship with you and hope to provide you with the best service and solution. Let us make a better world for our industry!



## Contact us

Tel: +86-755-8981 8866 Fax: +86-755-8427 6832

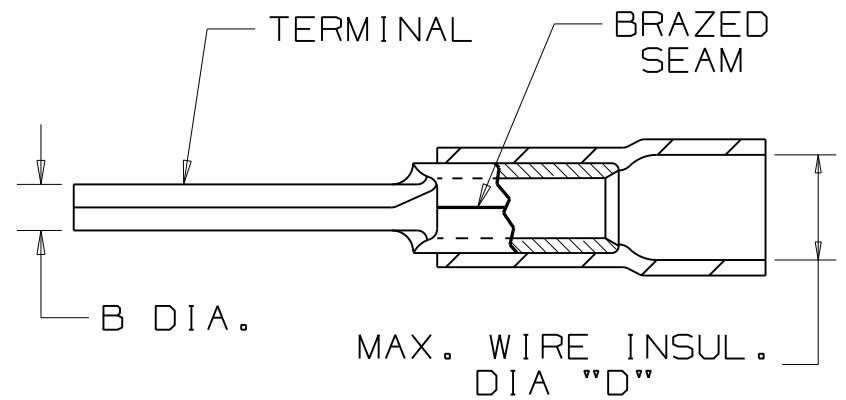
Email & Skype: info@chipsmall.com Web: www.chipsmall.com

Address: A1208, Overseas Decoration Building, #122 Zhenhua RD., Futian, Shenzhen, China



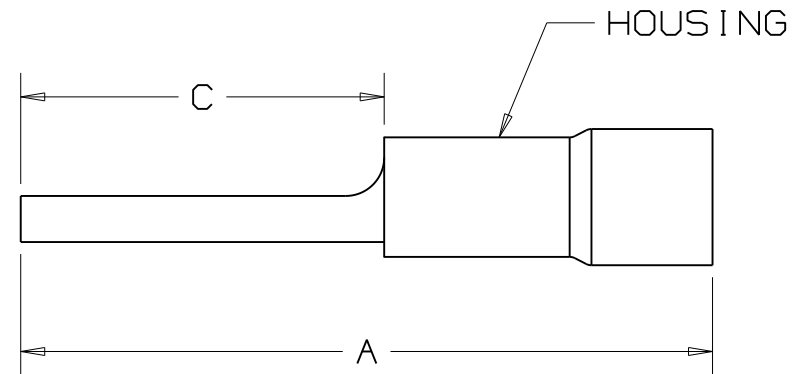
THIS COPY IS PROVIDED ON A RESTRICTED BASIS AND IS NOT TO BE USED IN ANY WAY DETRIMENTAL TO THE INTERESTS OF PANDUIT CORP.

PANDUIT PART NUMBER		WIRE SIZE AWG	DIMENSIONS in.				HOUSING COLOR
PREFIX	PK		A $\pm .03$ $\pm (.8)$	B DIA. $\pm .01$ ( $\pm .3$ )	C $\pm .02$ $\pm (.3)$	D DIA.	
PV18-P47	-CY -MY	22-18 (1.5-1.0)	.97 (24,6)	.07 (1,8)	.49 (12,4)	.15 (3,8)	RED
PV14-P47	-C -M	16-14 (1.5-2.5)	.97 (24,6)	.07 (1,8)	.49 (12,4)	.17 (4,3)	BLUE
PV10-P55*	-LY -DY	12-10 (4.0-6.0)	1.10 (27,9)	.10 (2,5)	.55 (14,0)	.25 (6,35)	YELLOW



NOTES:

- RECOMMENDED FOR:  
A. SOLID OR STRANDED COPPER WIRE
- MATERIAL:  
A. STAMPING - COPPER, TIN PLATED  
B. HOUSING - VINYL, COLOR CODED
- PACKAGE QTY: STD. PKG. -LY=50, -C, -CY=100  
BULK PKG. -DY=500, -M, -MY=1000
- DIMENSIONS IN BRACKETS ARE IN mm or mm<sup>2</sup>
- Tools:  
PANDUIT APPROVED: CT-100, CT-160,  
CT-550CH, CT-500CH  
(EXCEPT PV10-P55)CT-1550, CT-1551
- WIRE STRIP LENGTH 5/16 <sup>+1/32</sup><sub>-0</sub> (7,9 <sup>+B</sup><sub>-0</sub>)



\* Not UL Listed



LISTED  
587H  
E52164

**PANDUIT** CORP.

TINLEY PARK, ILLINOIS

VINYL INSULATED PIN TERMINAL

REV	DATE	BY	CHK	DESCRIPTION
11	6/11	SRB		Added asterisk for PV10-P55 *Not UL Listed

DRAWN BY DAW	CHK'D RLS	SCALE NONE	DRAWING NO. A41335
-----------------	--------------	---------------	-----------------------