



Chipsmall Limited consists of a professional team with an average of over 10 year of expertise in the distribution of electronic components. Based in Hongkong, we have already established firm and mutual-benefit business relationships with customers from,Europe,America and south Asia,supplying obsolete and hard-to-find components to meet their specific needs.

With the principle of “Quality Parts,Customers Priority,Honest Operation,and Considerate Service”,our business mainly focus on the distribution of electronic components. Line cards we deal with include Microchip,ALPS,ROHM,Xilinx,Pulse,ON,Everlight and Freescale. Main products comprise IC,Modules,Potentiometer,IC Socket,Relay,Connector.Our parts cover such applications as commercial,industrial, and automotives areas.

We are looking forward to setting up business relationship with you and hope to provide you with the best service and solution. Let us make a better world for our industry!



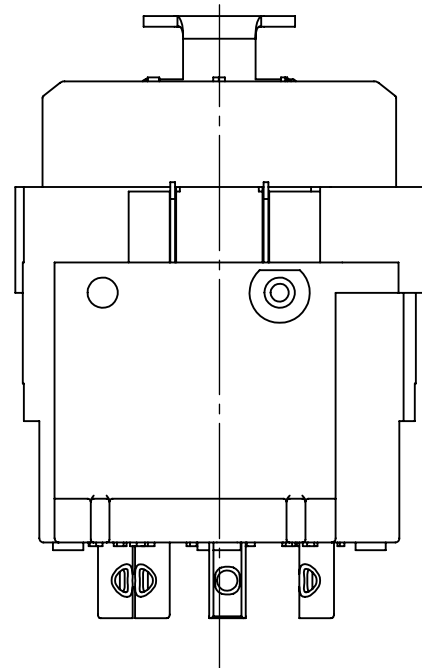
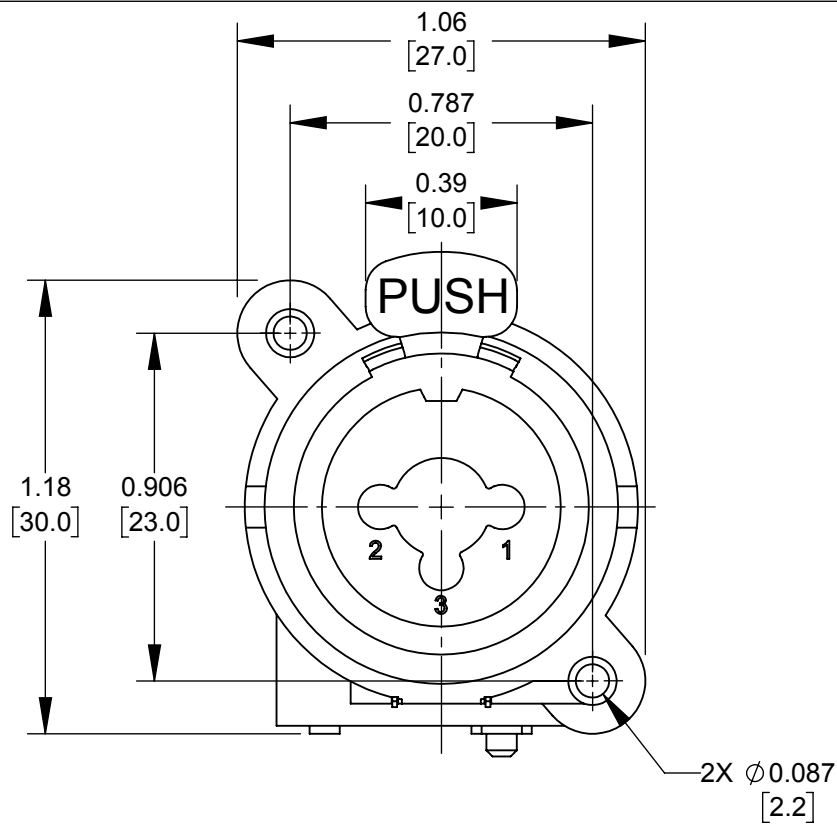
Contact us

Tel: +86-755-8981 8866 Fax: +86-755-8427 6832

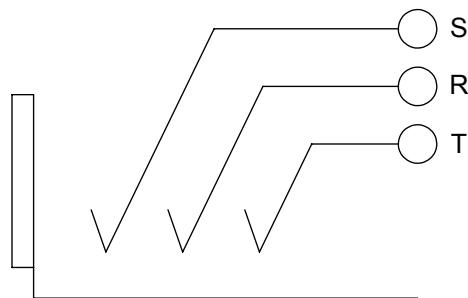
Email & Skype: info@chipsmall.com Web: www.chipsmall.com

Address: A1208, Overseas Decoration Building, #122 Zhenhua RD., Futian, Shenzhen, China

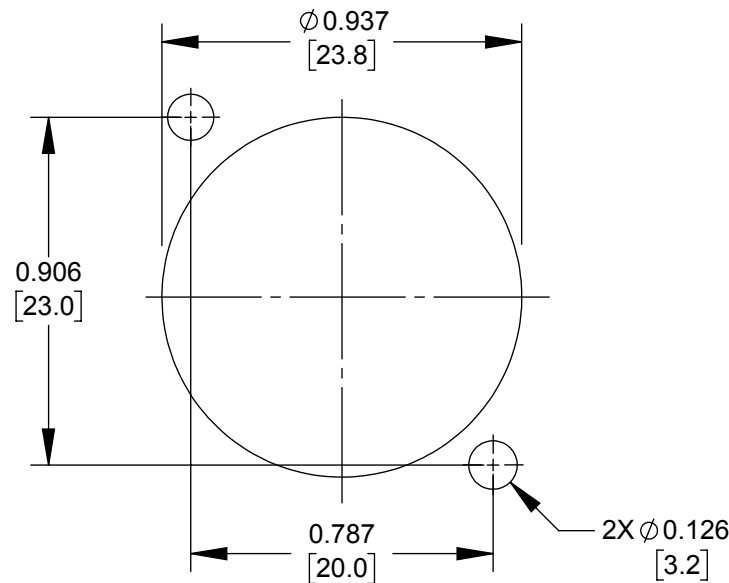
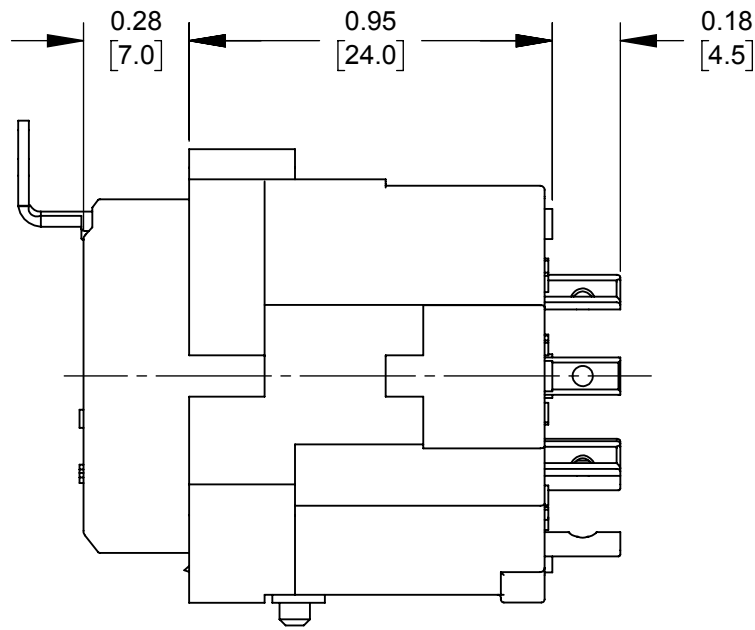
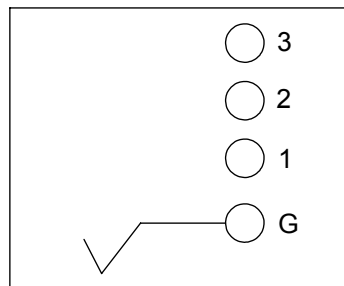




JACK SCHEMATIC



XLR SCHEMATIC



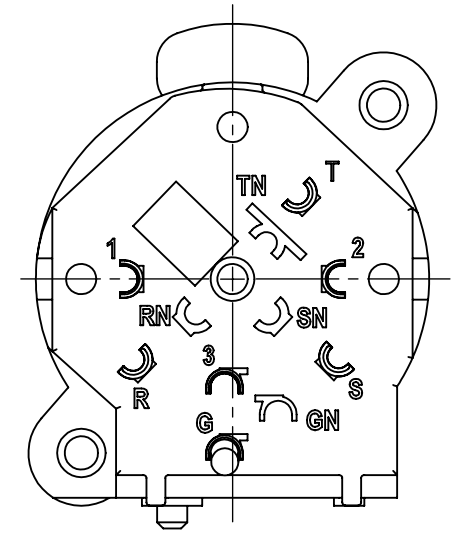
PANEL CUT OUT
COMPONENT SIDE

REV	ECO NUMBER	DATE	BY	APVD
A	27996	2/8/18	TJK	TJK
REVISIONS				

UNLESS OTHERWISE SPECIFIED				
1. ALL DIMENSIONS IN INCHES [mm]				
- TWO PLACE DECIMALS ±0.02 [0.5]				
- THREE PLACE DECIMALS ±0.005 [0.13]				
DO NOT SCALE DRAWING				

NOTES:

- MATERIALS:
HOUSING - BLACK THERMOPLASTIC
CONTACTS - COPPER ALLOY GOLD PLATED
PUSH BUTTON/SPRING - COPPER ALLOY NICKEL PLATED
GROUND SPRING - COPPER ALLOY SILVER PLATED
- OPERATING SPECS:
OPERATING/STORAGE TEMP: -30 °C TO 80 °C
RATED VOLTAGE/RATE CURRENT: 50V/7.5A
INSULATION RESISTANCE: 1/4 JACK: 100MΩ, XLR: INTIAL 2GΩ,
AFTER DAMP HEAT:>0.5GΩ
CONTACT RESISTANCE: **1/4 JACK:** 50mΩ,
XLR: 30mΩ
DIELECTRIC STRENGTH: **1/4 JACK:** 0.5mA, AC 500V.
XLR: 0.5mA, AC 500V
LIFE: **1/4 JACK:** 2,000 CYCLES,
XLR: 1000 CYCLES
- THIS PRODUCT IS RoHS COMPLIANT.



CUSTOMER DRAWING

					<div>UNLESS OTHERWISE SPECIFIED</div> <div>1. ALL DIMENSIONS IN INCHES [mm]</div> <div>- TWO PLACE DECIMALS ±0.02 [0.5]</div> <div>- THREE PLACE DECIMALS ±0.005 [0.13]</div>	THIS DRAWING DESCRIBES A DESIGN CONSIDERED PROPRIETARY IN NATURE, DEVELOPED AND MANUFACTURED BY SWITCHCRAFT INC. AND IS RELEASED ON A CONFIDENTIAL BASIS FOR IDENTIFICATION PURPOSES ONLY.													
						SIZE	WIDTH		MULT		LBS/M		TEMPER						
						FINISH SPEC No.						MATERIAL SPEC No.							
						FIRST USED ON				SCALE 2:1		<div>Switchcraft®</div>							
						DATE DRAWN	BY	CHKD		APVD									
A	27996	2/8/18	TJK	TJK		1/8/17	AB	AB 1/8/17		TJK 2/16/18									
REV	ECO NUMBER	DATE	BY	APVD	NAME 1/4" PLUG AND 3 PIN XLR, COMBO JACK, SOLDER CUP, RoHS						PART No. PXC				REV A				
REVISIONS					DO NOT SCALE DRAWING														