



Chipsmall Limited consists of a professional team with an average of over 10 year of expertise in the distribution of electronic components. Based in Hongkong, we have already established firm and mutual-benefit business relationships with customers from,Europe,America and south Asia,supplying obsolete and hard-to-find components to meet their specific needs.

With the principle of “Quality Parts,Customers Priority,Honest Operation,and Considerate Service”,our business mainly focus on the distribution of electronic components. Line cards we deal with include Microchip,ALPS,ROHM,Xilinx,Pulse,ON,Everlight and Freescale. Main products comprise IC,Modules,Potentiometer,IC Socket,Relay,Connector.Our parts cover such applications as commercial,industrial, and automotives areas.

We are looking forward to setting up business relationship with you and hope to provide you with the best service and solution. Let us make a better world for our industry!



## Contact us

Tel: +86-755-8981 8866 Fax: +86-755-8427 6832

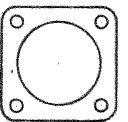
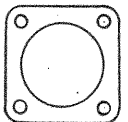
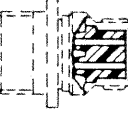
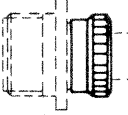
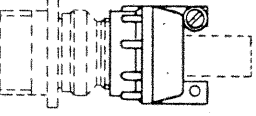
Email & Skype: info@chipsmall.com Web: www.chipsmall.com

Address: A1208, Overseas Decoration Building, #122 Zhenhua RD., Futian, Shenzhen, China



ACCESSORIES

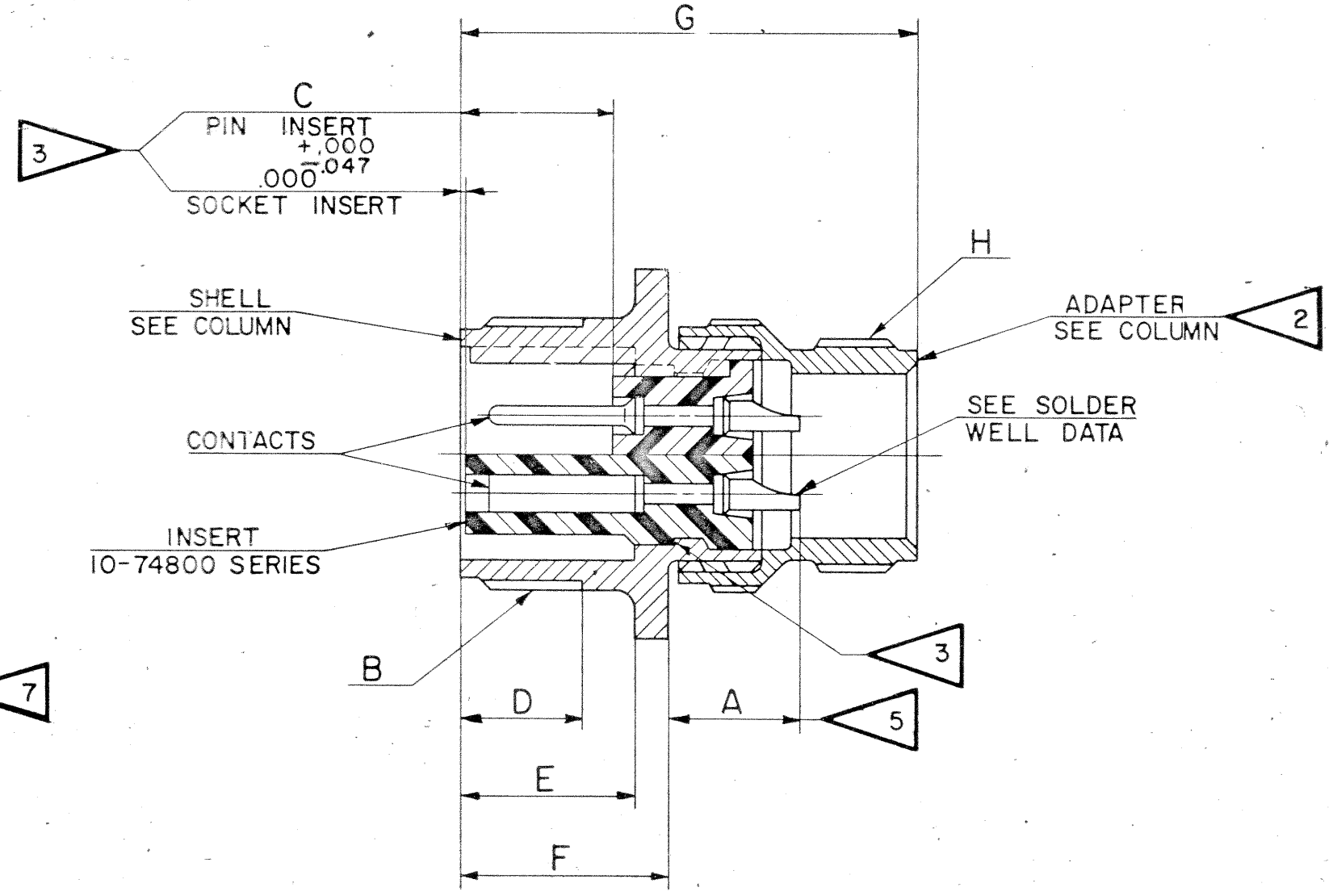
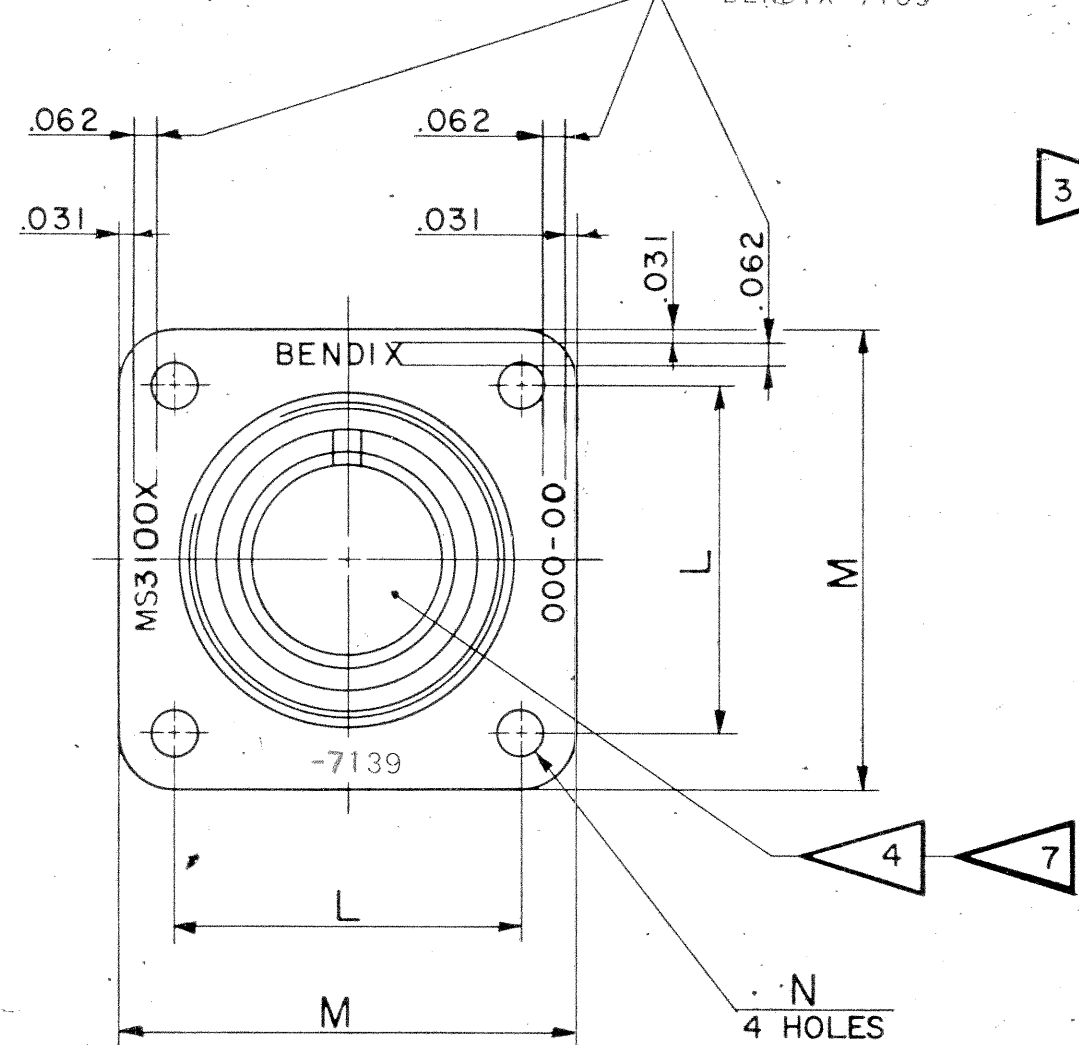
(NOT PART OF STANDARD ASSEMBLY)

 FLANGE GASKET, PLAIN 10-40450- SERIES	 FLANGE GASKET, SHIELDING 10-40450-( )S SERIES
 GROMMET 10-40800 SERIES	 GROMMET RETAINING NUT SEE TABLE
 CABLE CLAMP 10-35900-XX3 SERIES	

REF	WAG	DATE	D MAN	APPD
1	33780-54	1-20-58	HJDOCK	
2	35826-1	9-2-59	SIEDSMA	
A1	36200-27	2-11-60	AK	
A2	36525-322	3-17-60	LALLI	
A3	42525-43	10-2-63	HILLAR	
A4	51175-1	11-17-69	Randall	
A5	53249-13	1-6-72	Randall	

1 9

STAMP "BENDIX", DATE CODE (9-3895) & MS NUMBER PER 9-2811  
EXAMPLE:  
BENDIX-7139  
MS3100A20-12S  
MS3100C20-12S  
FOR SUFFIX OTHER THAN "P" OR "S",  
STAMP PER 9-2437  
(SUFFIX OF MS NUMBER ONLY)  
EXAMPLE:  
MS3100A20-12SX  
BENDIX-7139



10-168008 THRU  
10-168040

USE OF THIS DOCUMENT IS UNLIMITED. DOCUMENTS REFERENCED HEREON CONTAIN LIMITED RIGHTS DATA.

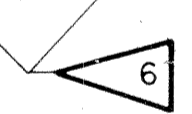
CONTACT SIZE	0	4	8	12	16M
WELL DIA	.469 $\pm$ .005 -.003	.332 $\pm$ .005 -.003	.209 $\pm$ .004 -.002	.116 $\pm$ .004 -.002	.078 $\pm$ .004 -.002
WELL DEPTH $\pm$ .031 -.000	.625	.625	.500	.375	.250

MATERIAL SPEC.	PROCESS SPEC. SEE SHEET 2	SCINTILLA MAGNETO DIVISION BENDIX AVIATION CORPORATION SIDNEY, N.Y. U.S.A.				TOLERANCES UNLESS OTHERWISE SPECIFIED: DECIMALS $\pm$ .010	
HEAT TREAT SPEC.	FINISH SPEC.	CONNECTOR, ELECTRICAL RECEPTACLE, TYPE C ( )FW				NEXT ASSEMBLY: SEE PARTS LIST	
TOOL ACC.		D'MAN	CHECKER	MAT.	ST'DS	CH. D'MAN	APPROVED
SUM. NO. 22569-1		4-24-57	5-9-57			5-10-57	5-10-57
		SCALE: NONE				SUPERSEDED BY: 10-168008 THRU 10-168040	
		DWG SIZE C				SHEET 1 OF 2	

SEE SHEET 2.  
NOTES: REF SYMBOL  $\triangle$

REF	WA	DATE	D MAN	APPD
32508-157		1-20-58	HUDOCK	
1 33750-64	SEE SHEET 1			
2 35826-1	SEE SHEET 1	9-2-59	SIEDSMA	
A1 36200-27	SEE SHEET 1	2-11-60	Markowski	
A2 34525-322	SEE SHEET 1	3-17-60	LALLI	
A3 42525-43	SEE SHEET 1	10-263	MILLAR	
A4	SEE SHEET 1 FOR ALL CHANGES			
A5				

ASSEMBLY NO.	MS NO.	DIMENSIONS											DETAILS		ACCESSORY
		A +.050 -.060	B THREAD (PLATED) CLASS 2A	C ±.031	D MIN FULL THD	E +.010 -.000	F +.020 -.010	G ±.030	H THREAD (PLATED) CLASS 2A	L ±.005	M	N DIA +.004 -.002	SHELL	ADAPTER	GROMMET RETAINING NUT
10-168008 -	3100 8S -	.422	.5000-28UNEF	.484	.391	.562	.672	1.391	.5000-28UNEF	.594	.875	.120	10-37260-8	10-37267-8	10-37269-8
10-168010 -	10S -		.6250-24NEF			.563		1.468	.5000-28UNEF	.719	1.000		-10	-10	-10
10-168011 -	10SL -		.6250-24NEF			.562			.6250-24NEF	.719	1.000		-11	-12	-12
10-168012 -	12S -	↓	.7500-20UNEF	↓	.450	.563	↓	↓		.812	1.094		-12	-12	-12
10-168013 -	12 -	.672	.7500-20UNEF	.672	.625	.750	.860	1.843		.812	1.094		-13	-13	-13
10-168014 -	14S -	.422	.8750-20UNEF	.484	.450	.562	.672	1.468	.7500-20UNEF	.906	1.188		-14	-14	-14
10-168015 -	14 -	.672	.8750-20UNEF	.672	.625	.750	.860	1.843	.7500-20UNEF	.906	1.188		-15	-15	-15
10-168016 -	16S -	.422	1.0000-20UNEF	.484	.450	.562	.672	1.468	.8750-20UNEF	.969	1.281		-16	-16	-16
10-168017 -	16 -	.672	1.0000-20UNEF	.672	.625	.750	.860	1.843	.8750-20UNEF	.969	1.281		-17	-17	-17
10-168018 -	18 -	.641	1.1250-18NEF				.891	1.938	1.0000-20UNEF	1.063	1.375		-18	-18	-18
10-168020 -	20 -		1.2500-18NEF					1.844	1.1875-18NEF	1.156	1.500		-20	-20	-20
10-168022 -	22 -	↓	1.3750-18NEF					1.938	1.1875-18NEF	1.250	1.625	↓	-22	-22	-22
10-168024 -	24 -	.578	1.5000-18NEF			.813	.953	1.969	1.4375-18NEF	1.375	1.750	.147	-24	-24	-24
10-168028 -	28 -	.578	1.7500-18NS			.812	.953	2.188	1.4375-18NEF	1.562	2.000	.147	-28	-28	-28
10-168032 -	32 -	.500	2.0000-18NS			.875	1.032	2.157	1.7500-18NS	1.750	2.250	.173	-32	-32	-32
10-168036 -	36 -		2.2500-16UN				1.031	2.219	2.0000-18NS	1.938	2.500		-36	-36	-36
10-168040 -	40 -	↓	2.5000-16UN	↓	↓	↓	1.031	2.188	2.2500-16UN	2.188	2.750	↓	-40	-40	-40



10-168008 THRU  
10-168040

- FOR CONTACT SIZE, SPACING & SERVICE RATING, SEE DRAWINGS MS33680 THRU MS33690.
- DIMENSIONS MUST BE MAINTAINED WHEN INSERTS ARE PRESSED FIRMLY AGAINST INDICATED SHOULDER.
- ADAPTER MUST BE REMOVED WHEN GROMMET RETAINING NUT IS USED.
- THE UNITS ILLUSTRATED MEET THE REQUIREMENTS OF MS3100A & MS3100C, PER SPEC MIL-C-5105D.
- INCREASE A DIMENSION BY .312 FOR SIZE "0" CONTACT ONLY.
- FOR PART NUMBERS 10-168017-13, 10-168018-15, 61- & 62-, SEE INDIVIDUAL DRAWINGS 10-168017-13, 10-168018-15, 61-00000 & 62-00000.
- SEE WORK ORDER FOR PERMISSIBLE ADDITIONAL OR ALTERNATE STAMPING.
- SEE DRAWINGS 10-168608 THRU 10-168640 & 10-168808 THRU 10-168840 FOR REQUIRED MATING PLUG ASSEMBLIES.
- ALL 10- & 61- ASSEMBLIES TO BE ASSEMBLED TO 9-3103-1 AND TESTED TO 9-3106-5, INSERTS AND CONTACTS ARE REMOVABLE. ALL 62- ASSEMBLIES TO BE ASSEMBLED TO 9-3238-1 AND TESTED 9-3106-4, INSERTS AND CONTACTS ARE NOT REMOVABLE.
- TO COMPLETE ASSEMBLY NUMBER & MS NUMBER, ADD APPLICABLE INSERT ARRANGEMENT SUFFIX TO BASE NUMBERS LISTED ABOVE. (FOR ALTERNATE ARRANGEMENTS, REFER TO 9-2437). TO DETERMINE DESIRED INSERT ARRANGEMENT, SEE PARTS LISTS 10-168008 THRU 10-168040.

MATERIAL SPEC		PROCESS SPEC TEST 9-3106-5 9-3106-4 ASSY 9-3103-1 9-3238-1 SEE NOTE 7 9-2811 9-2437 9-3895		SCINTILLA MAGNETO DIVISION BENDIX AVIATION CORPORATION SIDNEY N.Y. U.S.A.				TOLERANCES UNLESS OTHERWISE SPECIFIED DECIMALS ±.010				
DATE PREP SPEC		NAME		CONNECTOR, ELECTRICAL RECEPTACLE, TYPE C ( ) FW				NEXT ASSEMBLY				
TOOL AXL		D'MAN		CHECKER	MAT.	ST'DS	CH D'MAN	APPROVED	SCALE	SUPERSEDES		
COM REC 2569-1		RINES		BALMATIC					NONE	SUPERSEDED BY 10-168008 THRU 10-168040		
		4-25-57		5-9-57						DWG SIZE C TAB. SHEET 2 OF 2 CODE 77820		