



Chipsmall Limited consists of a professional team with an average of over 10 year of expertise in the distribution of electronic components. Based in Hongkong, we have already established firm and mutual-benefit business relationships with customers from,Europe,America and south Asia,supplying obsolete and hard-to-find components to meet their specific needs.

With the principle of “Quality Parts,Customers Priority,Honest Operation,and Considerate Service”,our business mainly focus on the distribution of electronic components. Line cards we deal with include Microchip,ALPS,ROHM,Xilinx,Pulse,ON,Everlight and Freescale. Main products comprise IC,Modules,Potentiometer,IC Socket,Relay,Connector.Our parts cover such applications as commercial,industrial, and automotives areas.

We are looking forward to setting up business relationship with you and hope to provide you with the best service and solution. Let us make a better world for our industry!



Contact us

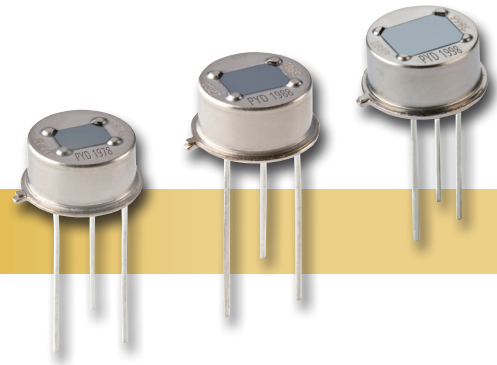
Tel: +86-755-8981 8866 Fax: +86-755-8427 6832

Email & Skype: info@chipsmall.com Web: www.chipsmall.com

Address: A1208, Overseas Decoration Building, #122 Zhenhua RD., Futian, Shenzhen, China



DIGITAL DUAL ELEMENT PYROS FOR MOTION SENSING



PYD 1788, PYD 1798 – DigiPyro®

Applications

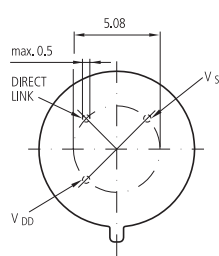
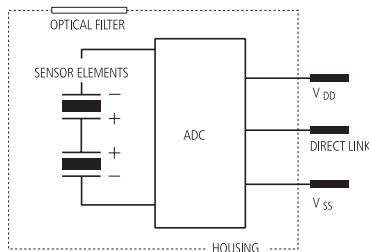
- Passive intrusion alarm
- Auto light switch
- Auto lamps

Features and Benefits

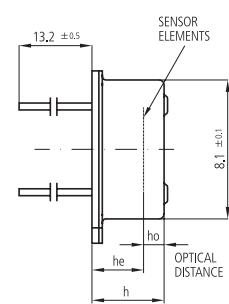
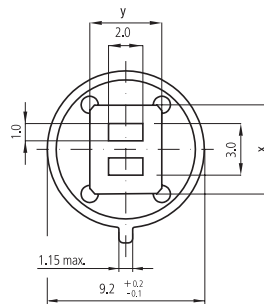
- TO-5 metal housing
- Digital direct link
- Different window sizes
- Excellent EMI protection

Product Description

The DigiPyro® detector range in TO-5 housing includes 3 variations of Dual Element types, each with a different window size. The element configurations are identical, as well as the internal electronic circuits. Whereas the PYD 1778 represents the lower-cost version with a small window, the PYD 1798 is provided as the superior type in terms of White Light Immunity (WLI) performance and field of view. The output signals are communicated in one 15-bit digital bit stream output via a single wire “direct link” connection to a suitable host microprocessor.



All dimensions in mm



PYD 1788, PYD 1798 – DigiPyro®

Parameter	Symbol	PYD 1798	PYD 1788	Unit	Remark
Responsivity, min.	R_{min}	3.3	3.3	kV/W	f = 1 Hz
Responsivity, typ.	R	4	4	kV/W	f = 1 Hz
Match, max.	M_{max}	10	10	%	
Noise	N, N_{max}	78/20	78/20	μV_{pp}	unobstructed
Field of view, horizontal	FoV	110°	95°		unobstructed
Field of view, vertical	FoV	110°	90°		Excelitas tester
WLI		***	**		
Height	h	4.2	4.2	mm	
Optical element location	he/ho	3.1/0.7	3.1/0.7	mm	
Filter size	X/Y	5.2/4.2	4.6/3.4	mm	
Digital Data					
Operating voltage	V_{DD}	2.7 ... 3.6	2.7 ... 3.6	V	
Supply current	I_{DD}	10	10	μA	$V_{DD} = 3.3 V$
	I_{DDmax}	15	15	μA	$V_{DD} = 3.3 V$
Serial interface update time	t_{REP}	2/13	2/13	ms	speed/interrupt
ADC resolution		14	14	Bits	
Output data format		2x14	2x14	Bits	MSB first
ADC sensitivity		6 ... 7	6 ... 7	$\mu V/count$	
ADC output offset		7000 ... 9200	7000 ... 9200	Counts	
ADC output offset, typ.		8192	8192	Counts	

* Standard, ** Improved, *** Excellent