



Chipsmall Limited consists of a professional team with an average of over 10 year of expertise in the distribution of electronic components. Based in Hongkong, we have already established firm and mutual-benefit business relationships with customers from,Europe,America and south Asia,supplying obsolete and hard-to-find components to meet their specific needs.

With the principle of “Quality Parts,Customers Priority,Honest Operation,and Considerate Service”,our business mainly focus on the distribution of electronic components. Line cards we deal with include Microchip,ALPS,ROHM,Xilinx,Pulse,ON,Everlight and Freescale. Main products comprise IC,Modules,Potentiometer,IC Socket,Relay,Connector.Our parts cover such applications as commercial,industrial, and automotives areas.

We are looking forward to setting up business relationship with you and hope to provide you with the best service and solution. Let us make a better world for our industry!



## Contact us

Tel: +86-755-8981 8866 Fax: +86-755-8427 6832

Email & Skype: info@chipsmall.com Web: www.chipsmall.com

Address: A1208, Overseas Decoration Building, #122 Zhenhua RD., Futian, Shenzhen, China



# QT-Brightek Chip LED Series

## SMD 0606 RGB LED

Part No.: QBLP600-RIG

**Table of Contents:**

Introduction .....	3
Electrical / Optical Characteristic (Ta=25 °C) .....	4
Absolute Maximum Rating .....	4
Characteristic Curves.....	6
Solder Profile & Footprint.....	7
Packing .....	8
Labeling .....	9
Ordering Information .....	9
Revision History .....	10
Disclaimer .....	10

## Introduction

**Feature:**

- Water clear lens
- Package in tape and reel
- Ultra bright 0606 LED package
- AlInGaP technology for R
- InGaN technology for IG

**Description:**

These ultra bright 0606 RIG LEDs have a height profile of 0.80mm. Combination of high brightness output and small footprint, these LEDs are ideal for keypad backlighting, status indication, and color mixing applications.

**Application:**

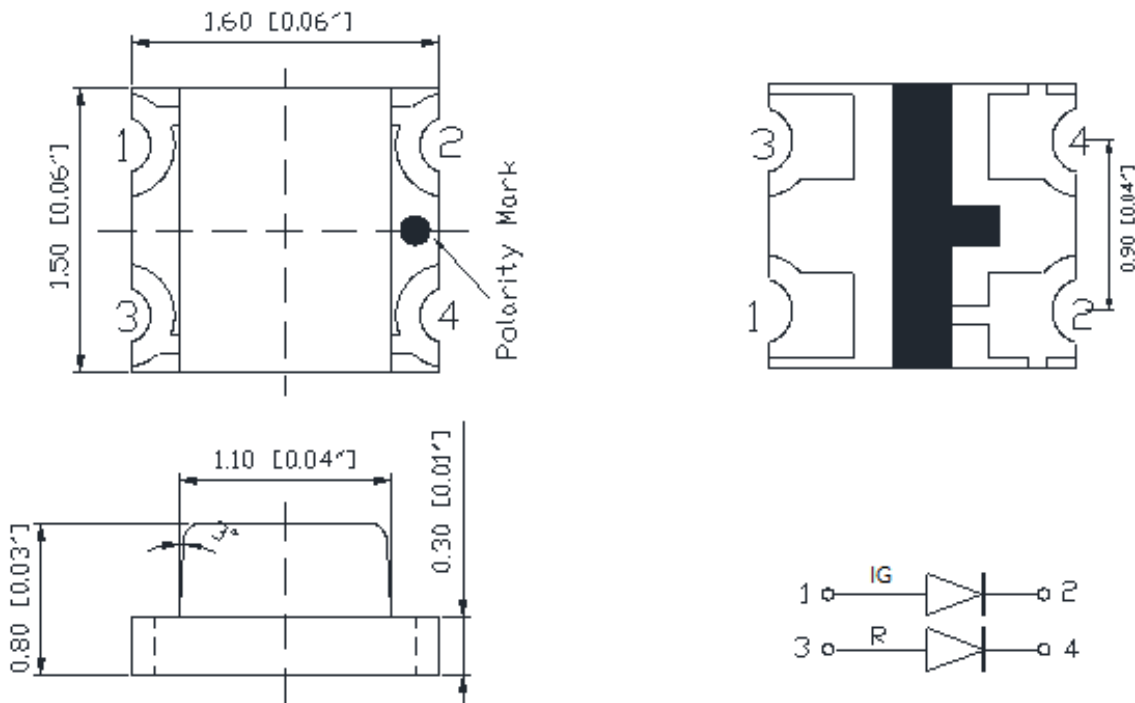
- Status indication
- Back lighting application

**Certification & Compliance:**

- TS16949
- ISO9001
- RoHS Compliant



**Dimension:**



Units: mm / tolerance = +/-0.1mm

**Electrical / Optical Characteristic (Ta=25 °C)**

Product	Color	I <sub>F</sub> (mA)	V <sub>F</sub> (V)		λ <sub>D</sub> (nm)			I <sub>V</sub> (mcd)	
			Typ.	Max	Min	Typ.	Max	Min	Typ.
QBLP600-RIG	Red	20	2.0	2.5	630	640	650	40	75
	True Green	20	3.4	3.7	515	520	525	200	380

**Absolute Maximum Rating**

Material	P <sub>d</sub> (mW)	I <sub>F</sub> (mA)	I <sub>FP</sub> (mA)*	V <sub>R</sub> (V)	T <sub>OP</sub> (°C)	T <sub>ST</sub> (°C)	T <sub>SOL</sub> (°C)**
AllnGaP (R)	75	30	125	5	-40 ~ + 80	-40 ~ +85	260
InGaN (IG)	111	30	125	5	-40 ~ + 80	-40 ~ +85	260

\*Duty 1/8 @ 1KHz

\*\*IR Reflow for no more than 10 sec @ 260 °C

**Forward Voltage V<sub>F</sub> for AllnGaP @ I<sub>F</sub>=20mA**

Bin	Min.	Max.	Unit
□	1.7	2.5	V

**Forward Voltage V<sub>F</sub> for InGaN @ I<sub>F</sub>=20mA**

Bin	Min.	Max.	Unit
f	2.8	3.1	V
g	3.1	3.4	
h	3.4	3.7	

**Luminous Intensity  $I_v$  @  $I_F=20mA$** 

Bin	Min.	Max.	Unit
F	40	50	mcd
G	50	63	
H	63	80	
I	80	100	
J	100	125	
K	125	160	
L	160	200	
M	200	250	
N	250	320	
O	320	400	
P	400	500	
Q	500	630	

**Dominant Wavelength  $\lambda_D$  for Red @  $I_F=20mA$** 

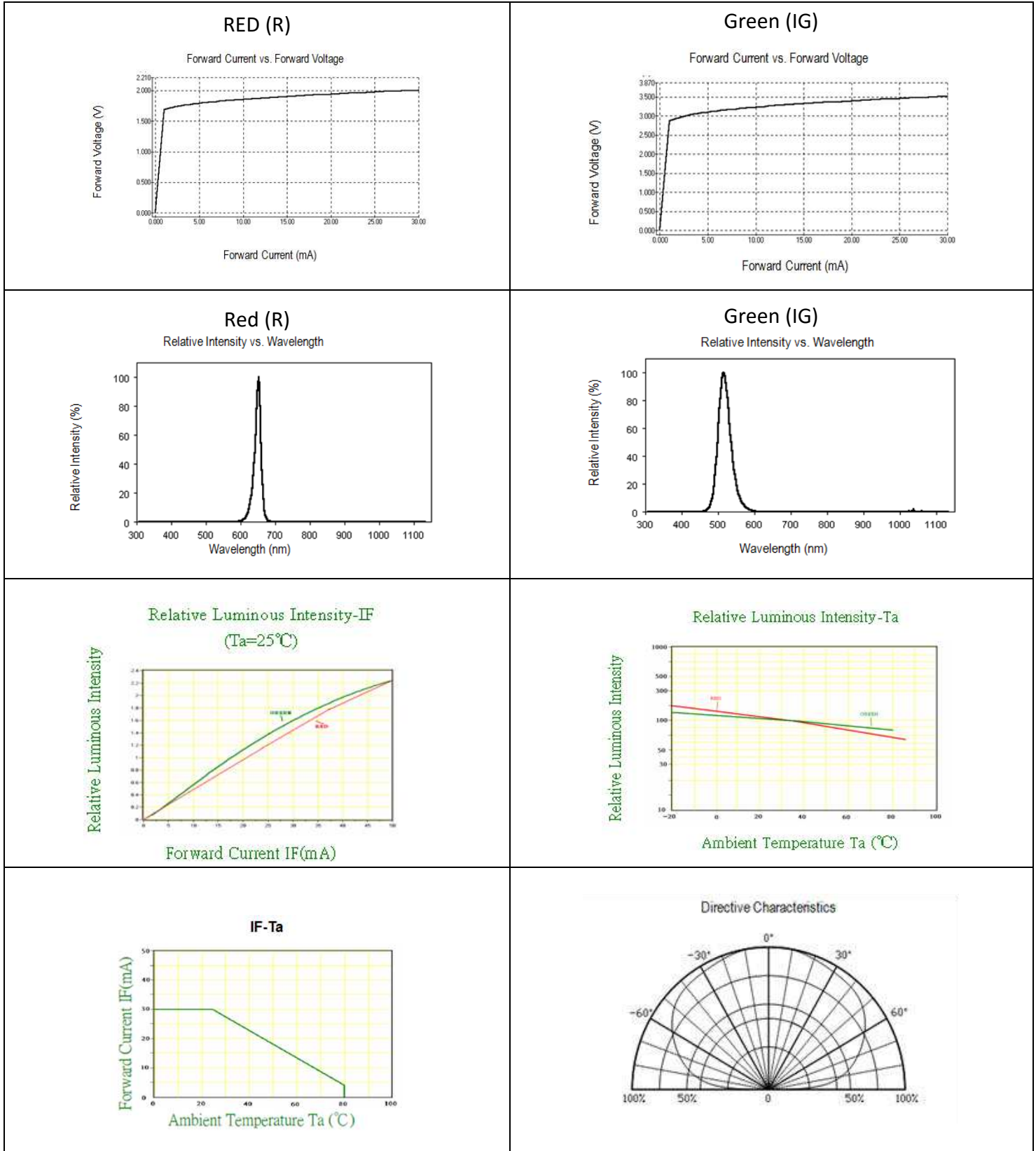
Bin	Min.	Max.	Unit
v	630	635	nm
w	635	650	

**Dominant Wavelength  $\lambda_D$  for Green @  $I_F=20mA$** 

Bin	Min.	Max.	Unit
S	515	517.5	nm
T	517.5	520	
U	520	522.5	
V	522.5	525	

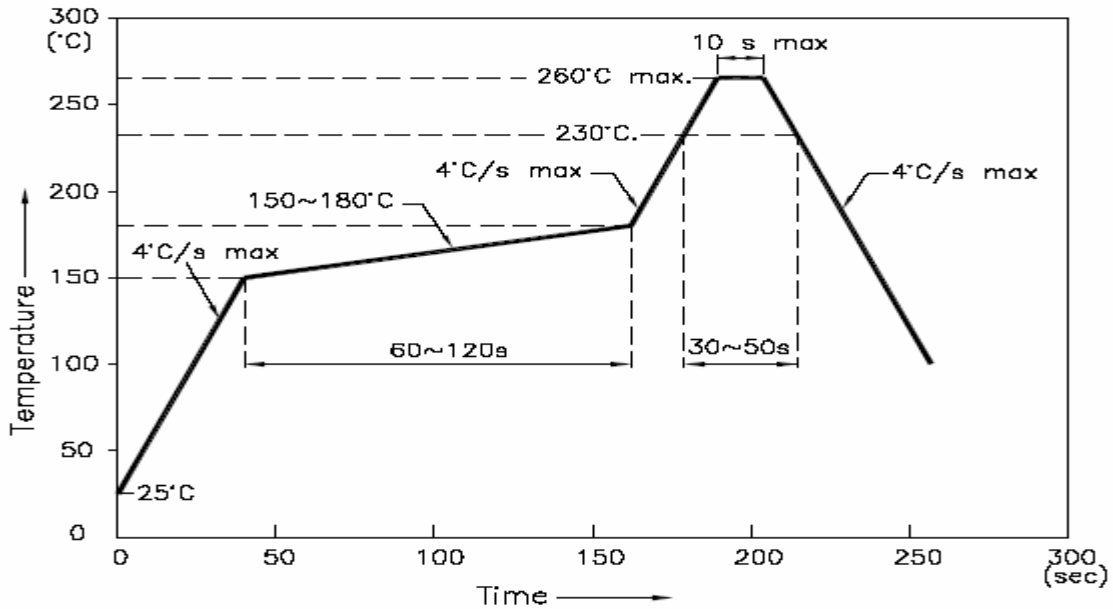


**Characteristic Curves**

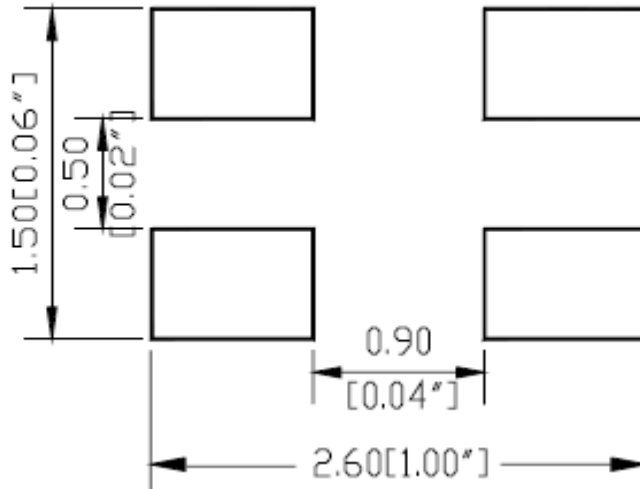


## Solder Profile & Footprint

- Recommended tin solder specifications: melting temperature in the range of 178~192 °C
- The recommended reflow soldering profile is as follows (temperatures indicated are as measured on the surface of the LED resin):



### Recommended Pad Layout



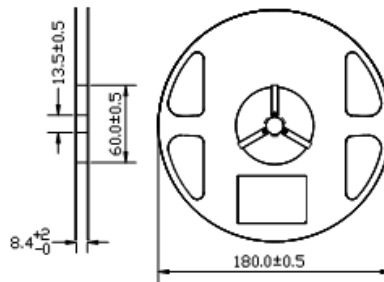
Units: mm

Tolerance: ± 0.1mm



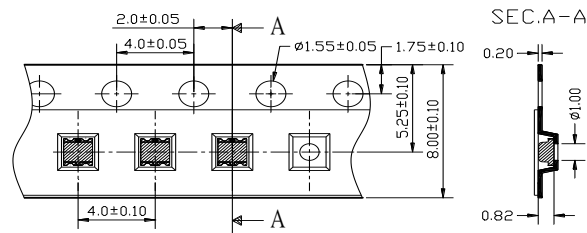
## Packing

Reel Dimension:



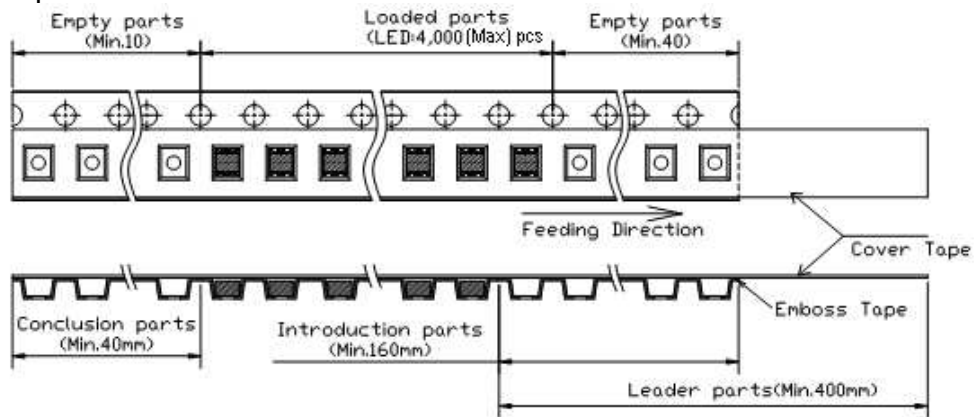
Unit: mm

Tape Dimension:

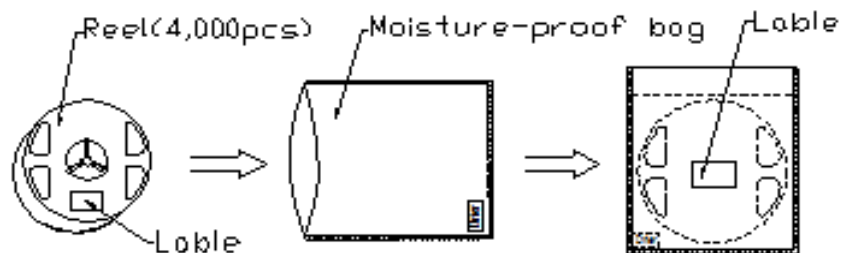


Unit: mm

Arrangement of Tape:



Packaging Specification:



**Labeling****Part No:** \_\_\_\_\_**Customer P/N:** \_\_\_\_\_**Item:** \_\_\_\_\_**Q'ty:** \_\_\_\_\_**Vf:** \_\_\_\_\_**Iv:** \_\_\_\_\_**VI:** \_\_\_\_\_**Date:** \_\_\_\_\_**Made in China****Ordering Information**

Part #	Orderable Part #	Spec Range	Quantity per reel
QBLP600-RIG	QBLP600-RIG	Red: $I_v=75\text{mcd typ. @ } I_F=20\text{mA}$ , $\lambda_D=630\text{nm to } 650\text{nm}$	4,000 units
		True Green: $I_v=380\text{mcd typ. @ } I_F=20\text{mA}$ , $\lambda_D=515\text{nm to } 525\text{nm}$	

## Revision History

Description:	Revision #	Revision Date
New Release of QBLP600-RIG	V1.0	06/25/2011
Update Specification	V1.1	12/09/2011
Update to new format / Update PCB drawing	V2.0	05/02/2016

## Disclaimer

QT-BRIGHTTEK reserves the right to make changes without further notice to any products herein to improve reliability, function or design. QT-BRIGHTTEK does not assume any liability arising out of the application or use of any product or circuit described herein; neither does it convey any license under its patent rights, nor the rights of others.

## Life Support Policy

QT-BRIGHTTEK's products are not authorized for use as critical components in life support devices or systems without the express written approval of QT-BRIGHTTEK. As used herein:

1. Life support devices or systems are devices or systems which, (a) are intended for surgical implant into the body, or (b) support or sustain life, and (c) whose failure to perform when properly used in accordance with instructions for use provided in the labeling, can be reasonably expected to result in a significant injury of the user.
2. A critical component in any component of a life support device or system whose failure to perform can be reasonably expected to cause the failure of the life support device or system, or to affect its safety or effectiveness.