



Chipsmall Limited consists of a professional team with an average of over 10 year of expertise in the distribution of electronic components. Based in Hongkong, we have already established firm and mutual-benefit business relationships with customers from,Europe,America and south Asia,supplying obsolete and hard-to-find components to meet their specific needs.

With the principle of "Quality Parts,Customers Priority,Honest Operation,and Considerate Service",our business mainly focus on the distribution of electronic components. Line cards we deal with include Microchip,ALPS,ROHM,Xilinx,Pulse,ON,Everlight and Freescale. Main products comprise IC,Modules,Potentiometer,IC Socket,Relay,Connector.Our parts cover such applications as commercial,industrial, and automotives areas.

We are looking forward to setting up business relationship with you and hope to provide you with the best service and solution. Let us make a better world for our industry!



Contact us

Tel: +86-755-8981 8866 Fax: +86-755-8427 6832

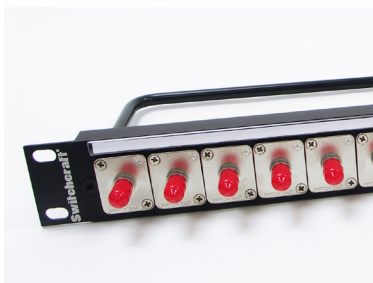
Email & Skype: info@chipsmall.com Web: www.chipsmall.com

Address: A1208, Overseas Decoration Building, #122 Zhenhua RD., Futian, Shenzhen, China



RACK MOUNT FIBER-OPTIC AND DATA PANELS

NPB | 610



Switchcraft® introduces a line of versatile 19" rack panels designed for patching Ethernet and LC, SC and ST fiber optic.

Based on the QGPK Series of blank rack panels and our popular EH Series connector system, these pre-loaded panels are available as 1RU or 2RU with a wide variety of connector options.

All Switchcraft® fiber optic and data panels come with changeable designation strips for custom channel identification and a cable tie bar.

RACK MOUNT FIBER-OPTIC AND DATA PANELS

NPB | 610

PART NUMBER LIST

QGPK1CAT5E	1 RU QG panel with 16 EHRJ45P5E (unshielded) Cat 5E feed-thru connectors.
QGPK1CAT5ES	1 RU QG panel with 16 EHRJ45P5ES (shielded) Cat 5E feed-thru connectors.
QGPK1CAT6	1 RU QG panel with 16 EHRJ45P6 (unshielded) Cat 6 feed-thru connectors.
QGPK1CAT6S	1 RU QG panel with 16 EHRJ45P6S (shielded) Cat 6 feed-thru connectors.
QGPK1LC	1 RU QG panel with 16 EHLC2 (single mode) fiber-optic feed-thru connectors.
QGPK1LCM	1 RU QG panel with 16 EHLC2M (multi-mode) fiber-optic feed-thru connectors.
QGPK1SC	1 RU QG panel with 16 EHSC2 (single mode) fiber-optic feed-thru connectors.
QGPK1SCM	1 RU QG panel with 16 EHSC2M (multi-mode) fiber-optic feed-thru connectors.
QGPK1ST	1 RU QG panel with 16 EHST2 (single mode) fiber-optic feed-thru connectors.
QGPK1STM	1 RU QG panel with 16 EHST2M (multi-mode) fiber-optic feed-thru connectors.
QGPK3CAT5E	2 RU QG panel with 32 EHRJ45P5E (unshielded) Cat 5E feed-thru connectors.
QGPK3CAT5ES	2RU QG panel with 32 EHRJ45P5ES (shielded) Cat 5E feed-thru connectors.
QGPK3CAT6	2 RU QG panel with 32 EHRJ45P6 (unshielded) Cat 6 feed-thru connectors.
QGPK3CAT6S	2 RU QG panel with 32 EHRJ45P6S (shielded) Cat 6 feed-thru connectors.
QGPK3LC	2 RU QG panel with 32 EHLC2 (single mode) fiber-optic feed-thru connectors.
QGPK3LCM	2 RU QG panel with 32 EHLC2M (multi-mode) fiber-optic feed-thru connectors.
QGPK3SC	2 RU QG panel with 32 EHSC2 (single mode) fiber-optic feed-thru connectors.
QGPK3SCM	2 RU QG panel with 32 EHSC2M (multi-mode) fiber-optic feed-thru connectors.
QGPK3ST	2 RU QG panel with 32 EHST2 (single mode) fiber-optic feed-thru connectors.
QGPK3STM	2 RU QG panel with 32 EHST2M (multi-mode) fiber-optic feed-thru connectors.