



Chipsmall Limited consists of a professional team with an average of over 10 year of expertise in the distribution of electronic components. Based in Hongkong, we have already established firm and mutual-benefit business relationships with customers from,Europe,America and south Asia,supplying obsolete and hard-to-find components to meet their specific needs.

With the principle of “Quality Parts,Customers Priority,Honest Operation,and Considerate Service”,our business mainly focus on the distribution of electronic components. Line cards we deal with include Microchip,ALPS,ROHM,Xilinx,Pulse,ON,Everlight and Freescale. Main products comprise IC,Modules,Potentiometer,IC Socket,Relay,Connector.Our parts cover such applications as commercial,industrial, and automotives areas.

We are looking forward to setting up business relationship with you and hope to provide you with the best service and solution. Let us make a better world for our industry!



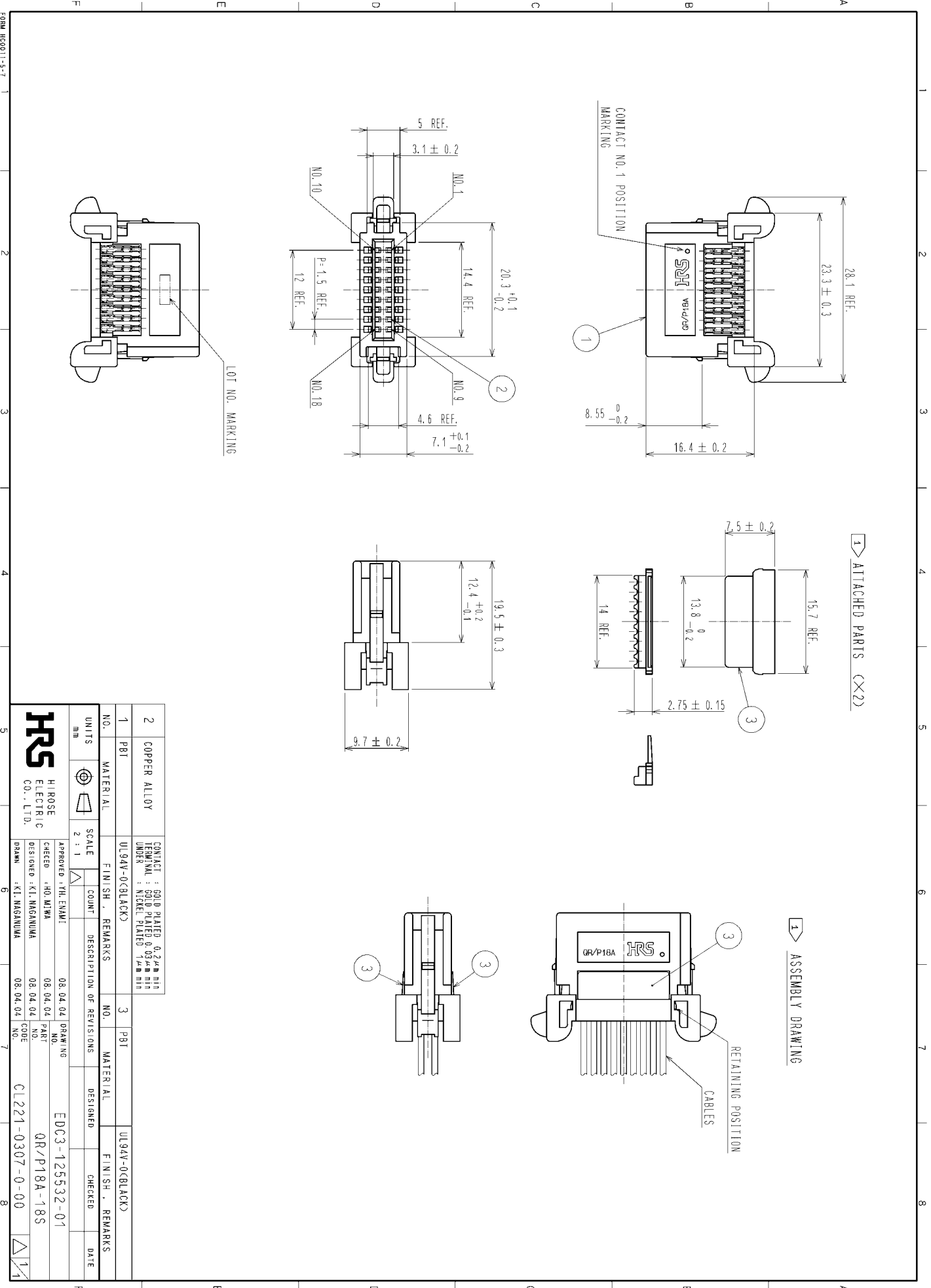
Contact us

Tel: +86-755-8981 8866 Fax: +86-755-8427 6832

Email & Skype: info@chipsmall.com Web: www.chipsmall.com

Address: A1208, Overseas Decoration Building, #122 Zhenhua RD., Futian, Shenzhen, China





2	COPPER ALLOY	CONTACT : GOLD PLATED 0.2μm min TERMINAL : GOLD PLATED 0.03μm min UNDER : NICKEL PLATED 1μm min							
1	PBT	UL94V-0(BLACK)							
3	PBT								
UNITS		SCALE	COUNT	DESCRIPTION OF REVISIONS		DESIGNED	CHECKED	DATE	
mm		2 : 1							
APPROVED : YIL ENAMI		08.04.04		DRAWING NO.		EDC3-125532-01			
CHECKED : HO MIWA		08.04.04		PART NO.		QR/P18A-18S			
DESIGNED : KI NAGANUMA		08.04.04		CODE		CL221-0307-0-00			
DRAWN : KI NAGANUMA		08.04.04		NO.					