



Chipsmall Limited consists of a professional team with an average of over 10 year of expertise in the distribution of electronic components. Based in Hongkong, we have already established firm and mutual-benefit business relationships with customers from,Europe,America and south Asia,supplying obsolete and hard-to-find components to meet their specific needs.

With the principle of “Quality Parts,Customers Priority,Honest Operation,and Considerate Service”,our business mainly focus on the distribution of electronic components. Line cards we deal with include Microchip,ALPS,ROHM,Xilinx,Pulse,ON,Everlight and Freescale. Main products comprise IC,Modules,Potentiometer,IC Socket,Relay,Connector.Our parts cover such applications as commercial,industrial, and automotives areas.

We are looking forward to setting up business relationship with you and hope to provide you with the best service and solution. Let us make a better world for our industry!



## Contact us

Tel: +86-755-8981 8866 Fax: +86-755-8427 6832

Email & Skype: [info@chipsmall.com](mailto:info@chipsmall.com) Web: [www.chipsmall.com](http://www.chipsmall.com)

Address: A1208, Overseas Decoration Building, #122 Zhenhua RD., Futian, Shenzhen, China



2

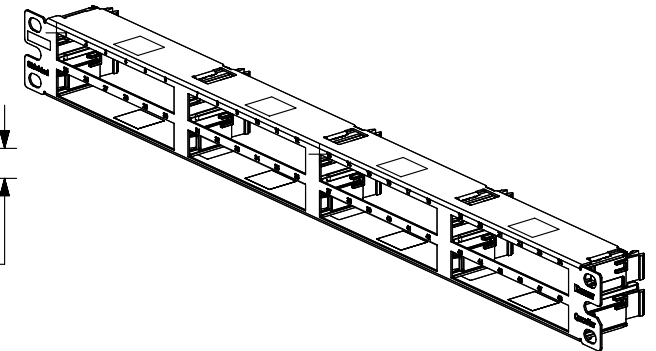
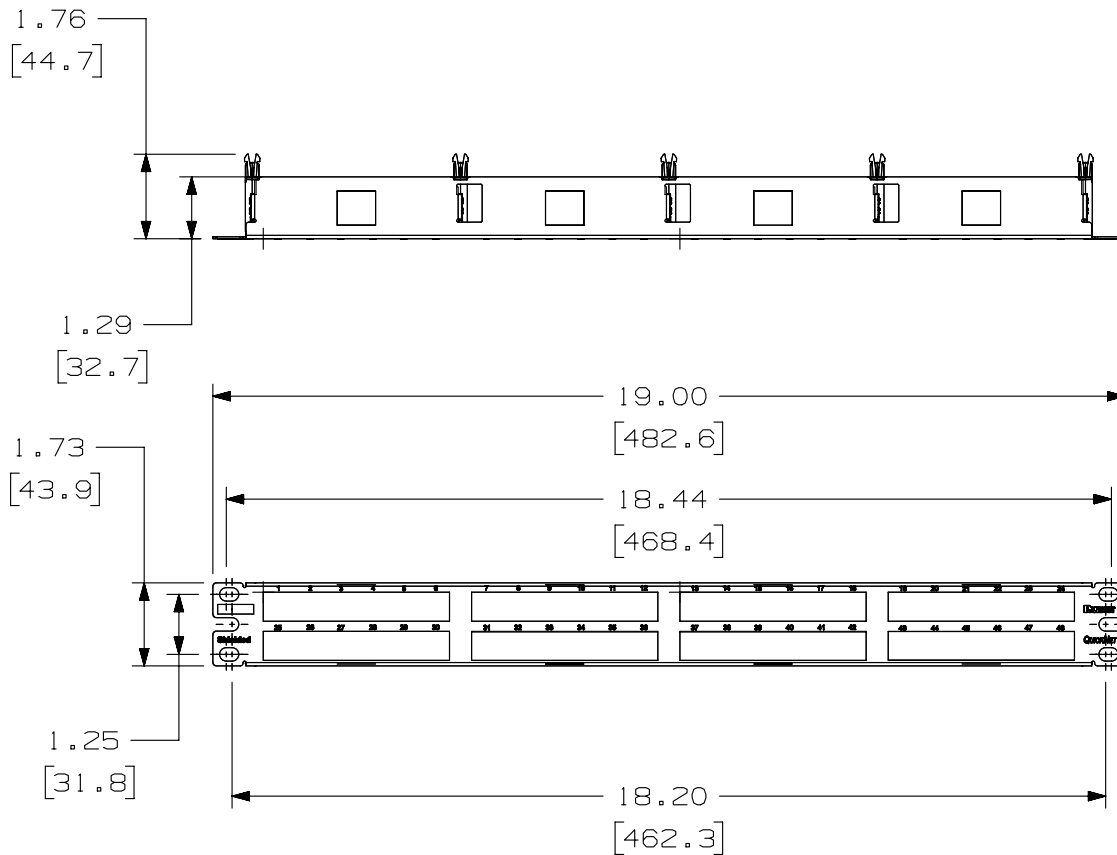
1

THIS COPY IS PROVIDED ON A RESTRICTED BASIS AND IS NOT TO BE USED IN ANY WAY DETRIMENTAL TO THE INTERESTS OF PANDUIT CORP.

PANDUIT PART NO.	WEIGHT (APPOX.)
QSP48HDBL	0.65 lb (294.8 g)

**NOTES:**

1. SEE CURRENT CATALOG FOR VARIOUS APPLICATIONS.
2. THE PATCH PANEL IS DESIGNED FOR MOUNTING TO 19" UNIVERSAL RACKS.
3. DIMENSIONS IN BRACKETS ARE IN METRIC.
4. PART INCLUDES:
  - 1- METAL STAMPING WITH SLIDE GUIDES
  - 1- SCREW KIT (INCLUDES FOUR #12-24 SCREWS)
  - 1- SCREW KIT (INCLUDES FOUR M6 SCREWS)



PART NUMBER		QSP48HDBL	
TITLE		QUICKNET 48 PORT PATCH PANEL	
ITEM REVISION NAME		CUSTOMER DRAWING	
DATASET FILE NAME		<b>PANDUIT</b>	
M02816AC/02		MATERIAL:	
M02816AC_DC17/02A		PANEL: C.R.S. GUIDES: ABS	
UNLESS OTHERWISE SPECIFIED, DIMENSIONAL TOLERANCES ARE: IN [mm]		DRAWING NUMBER:	
.X ± .XX ± .03 [ .8 ]		02816-17	
.XXX ± .010 [ .3 ]		THIRD ANGLE PROJECTION	
ANGLES ±		DRAWN BY	
B J N		DATE	
7-26-12		CHK	
W F M I		SCALE	
.25 TO 1		SHT 1 OF 1	
SIZE		A	

2

1

REV	DATE	BY	CHK	APR	DESCRIPTION	ECN
1	5-8-14	BJN	JSP	TMBA	REVISED & REDRAWN PREVIOUS REVISIONS REMVD FOR CLARITY	02816-17

D10100DA/14