



Chipsmall Limited consists of a professional team with an average of over 10 year of expertise in the distribution of electronic components. Based in Hongkong, we have already established firm and mutual-benefit business relationships with customers from,Europe,America and south Asia,supplying obsolete and hard-to-find components to meet their specific needs.

With the principle of “Quality Parts,Customers Priority,Honest Operation,and Considerate Service”,our business mainly focus on the distribution of electronic components. Line cards we deal with include Microchip,ALPS,ROHM,Xilinx,Pulse,ON,Everlight and Freescale. Main products comprise IC,Modules,Potentiometer,IC Socket,Relay,Connector.Our parts cover such applications as commercial,industrial, and automotives areas.

We are looking forward to setting up business relationship with you and hope to provide you with the best service and solution. Let us make a better world for our industry!



Contact us

Tel: +86-755-8981 8866 Fax: +86-755-8427 6832

Email & Skype: info@chipsmall.com Web: www.chipsmall.com

Address: A1208, Overseas Decoration Building, #122 Zhenhua RD., Futian, Shenzhen, China



DO NOT SCALE FROM THIS PRINT

TABLE 1						MATED HEIGHT WITH QSE-01
STYLE	"B"	"C"	BODY	GROUND PLANE	TERMINAL	
-01	.1680 [4.267]	.1600 [4.064]	QTE-20-01-D-XX	T-1G1-01-XXX	T-1S39-01-XXX	.197 [5.00] REF
-02	.2861 [7.267]	.2781 [7.064]	QTE-20-02-D-XX	T-1G1-02-XXX	T-1S59-02-XXX	.315 [8.00] REF
-03	.4042 [10.267]	.3962 [10.063]	QTE-20-03-D-XX	T-1G1-03-XXX	T-1S39-03-XXX	.433 [11.00] REF

TABLE 3		
No OF POS	"A"	"D"
-020	.788 [20.00]	.728 [18.48]
-040	1.575 [40.01]	1.515 [38.48]
-060	2.363 [60.01]	2.303 [58.48]
*-080	3.150 [80.01]	3.090 [78.49]
*-100	3.938 [100.01]	3.878 [98.49]

* = (SEE NOTE 14)

TABLE 2	
No OF POSITIONS	COPLANARITY INCLUDING GP
-020 THRU -060	.004 [0.10]
*-080 THRU *-100	.006 [0.15]

* = (SEE NOTE 14)

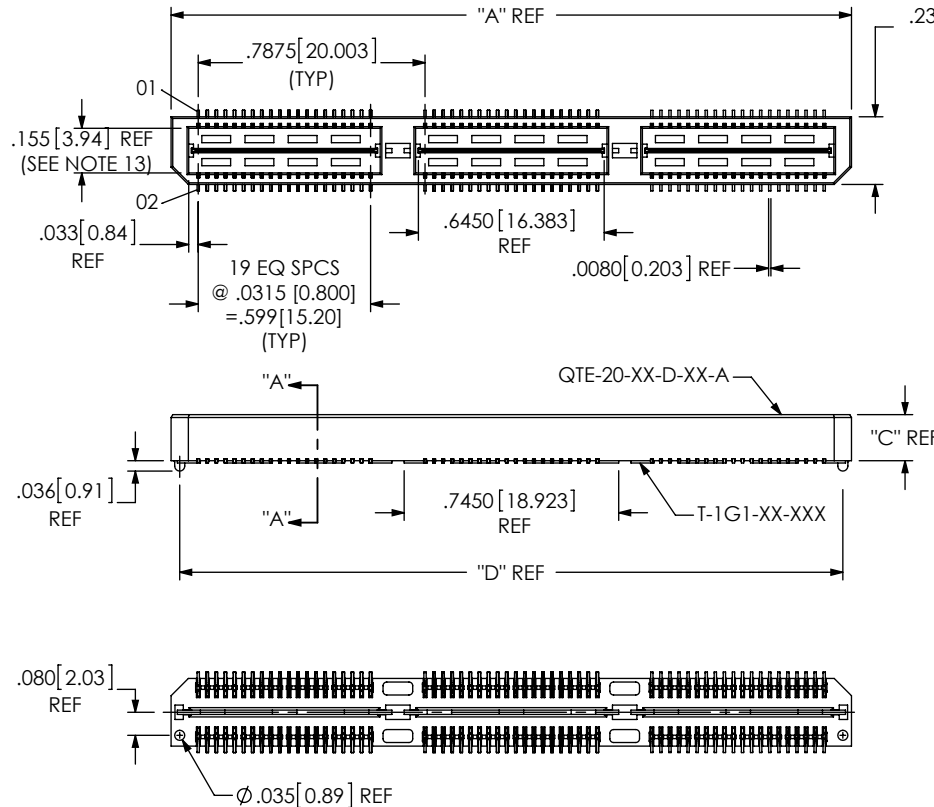


FIG 1

-A: ALIGNMENT PIN OPTION (QTE-060-01-XXX-D-A SHOWN) (STYLE -01, -02 & -03 ONLY)

NOTES:

- ⊕ REPRESENTS A CRITICAL DIMENSION.
- MINIMUM TERMINAL RETENTION: 8 OZ.
- MINIMUM GROUND PLANE RETENTION: 1 LB.
- PARTS TO BE MOLDED TO POSITION.
- MAXIMUM VARIANCE OF .002 [0.05].
- DIMENSION APPLIES TO TERMINALS AND GROUND PLANE.
- T-1SXX-XX-L CAN BE SUBSTITUTED FOR T-1SXX-XX-F.
- NOTE DELETED.
- GROUND PLANE PRESS HEIGHT MUST BE .003 [0.08] LESS THAN THE MAX HEIGHT OR .001 [0.03] GREATER THAN THE MINIMUM HEIGHT OF THE TERMINALS.
- T-1R36 RETENTION TO BODY TO BE 1.0 LBF.
- NOTE DELETED.
- DUE TO THE HIGH AMOUNT OF INSERTION FORCE NEEDED, THE -LC OPTION IS NOT COMPATIBLE WITH AUTO PLACEMENT. SAMTEC RECOMMENDS MANUAL PLACEMENT FOR ALL ASSEMBLIES WITH THE -LC OPTION.
- PIN CAN EXTEND PAST WALL .003 [0.08] MAX.
- AVAILABLE FOR EXISTING CUSTOMERS ONLY.
- FOR NEW APPLICATIONS REQUIRING THESE POSITIONS, PLEASE CONTACT SAMTEC INTERCONNECT PROCESSING GROUP.

QTE-XXX-XX-XXX-D-XXX

No OF POSITIONS

- 020, -040, -060, *-080, *-100 (PER ROW)
- * = (SEE NOTE 14 & 15)

LEAD STYLE

- 01: .1680 [4.267]
- 02: .2861 [7.267]
- 03: .4042 [10.267]
- 04: .6010 [15.265]
- 05: .7190 [18.263]
- 06: .8370 [21.260]
- 07: .9540 [24.231]
- 08: 1.1510 [29.260]
- 09: .5220 [13.258]
- 10: .5606 [14.239]

PLATING SPECIFICATION

- F: 3µ" FLASH GOLD IN CONTACT AREA, MATTE TIN ON TAIL (USE T-1SXX-XX-F, T-1G1-XX-F) (SEE NOTE 07)
- L: 10µ" LIGHT GOLD IN CONTACT AREA, MATTE TIN ON TAIL (USE T-1SXX-XX-L, T-1G1-XX-L)
- H: 30µ" HEAVY GOLD IN CONTACT AREA, 3µ" GOLD ON TAIL (USE T-1SXX-XX-H, T-1G1-XX-G)
- C: 50µ" ELECTRO-POLISHED SELECTIVE IN CONTACT AREA, MATTE TIN ON TAIL (USE T-1SXX-XX-C, T-1G1-XX-L)
- STL: 30µ" HEAVY SELECTIVE GOLD IN CONTACT AREA, TIN LEAD ON TAIL (USE T-1SXX-XX-STL, T-1G1-XX-STL)
- FTL: 3µ" FLASH SELECTIVE GOLD IN CONTACT AREA, TIN LEAD ON TAIL (USE T-1SXX-XX-FTL, T-1G1-XX-FTL)

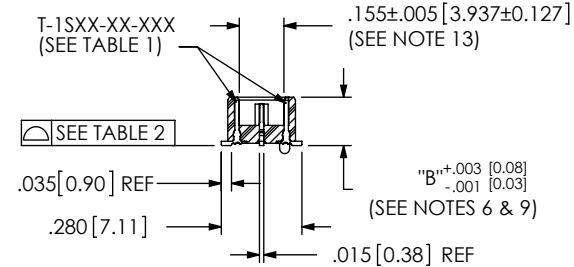
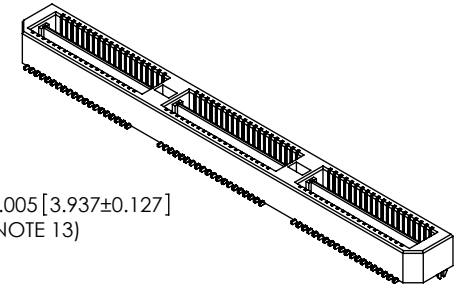
ROW SPECIFICATION

- D: DOUBLE (USE QTE-20-XX-D-XX & QTEH-20-XX-D-XX)

No OF BANKS

OPTION

- A: ALIGNMENT PINS
- LC: LOCKING CLIPS (SEE NOTE 12) (USE LC-08-TM-01) (SEE FIG 2, SHT 2)
- K: POLYIMIDE FILM (USE K-DOT-.276-.375-.005, SEE FIG 3, SHT 2) (N/A ON STYLE -07 & -08)
- TR: TAPE & REEL (SEE FIG 13, SHT 7) (60 POS. MAX) (40 POS. MAX FOR -GP OPTION) (N/A ON STYLE -05, -06, -07, & -08)
- GP: GUIDE POSTS (SEE FIG 4, SHT 3) (AVAILABLE ON -01 ONLY) (USE QTE-20-01-D-XX-GP) (T & R PACK: 40 POS. MAX.)
- SD: SCREW DOWN (SEE FIG 5, SHT 3) (AVAILABLE ON -01 ONLY) (USE QTE-20-01-D-XX-SD)
- FL: FRICTION LOCKS (SEE FIG 9, SHT 5) (ONLY AVAILABLE ON -01 & -02) (NOT AVAILABLE WITH -GP, -SD) (NOT AVAILABLE ON -100 POS)
- RT1: RETENTION OPTION (SEE FIG 11, SHT 6) (ONLY AVAILABLE ON -01 LEAD STYLE) (MUST USE -A OPTION) (USE QTE-20-01-D-XX-A-RT1 & T-1R36-01-F) (NOT AVAILABLE WITH -LC, -GP, -SD, OR -FL)
- L: LATCHING OPTION (40 POS. MAX.) (SEE FIG 12, SHT 6) (MUST USE -A OPTION) (AVAILABLE ON -01 ONLY) (NOT AVAILABLE WITH -LC, -GP, -SD, -FL, OR -RT1)



SECTION "A"- "A"

<p>UNLESS OTHERWISE SPECIFIED, DIMENSIONS ARE IN INCHES. TOLERANCES ARE:</p> <p>DECIMALS ANGLES</p> <p>.XX: ±.01 [0.3]</p> <p>.XXX: ±.005 [0.13]</p> <p>.XXXX: ±.0020 [0.051]</p>	<p>PROPRIETARY NOTE</p> <p>THIS DOCUMENT CONTAINS CONFIDENTIAL AND PROPRIETARY INFORMATION AND ALL DESIGN, MANUFACTURING, REPRODUCTION, USE, PATENT RIGHTS AND SALES RIGHTS ARE EXPRESSLY RESERVED BY SAMTEC, INC. THIS DOCUMENT SHALL NOT BE DISCLOSED, IN WHOLE OR PART, TO ANY UNAUTHORIZED PERSON OR ENTITY NOR REPRODUCED, TRANSFERRED OR INCORPORATED IN ANY OTHER PROJECT IN ANY MANNER WITHOUT THE EXPRESS WRITTEN CONSENT OF SAMTEC, INC.</p>	<p>520 PARK EAST BLVD, NEW ALBANY, IN 47150 PHONE: 812-944-6733 FAX: 812-948-5047 e-Mail info@SAMTEC.com code 55322</p>

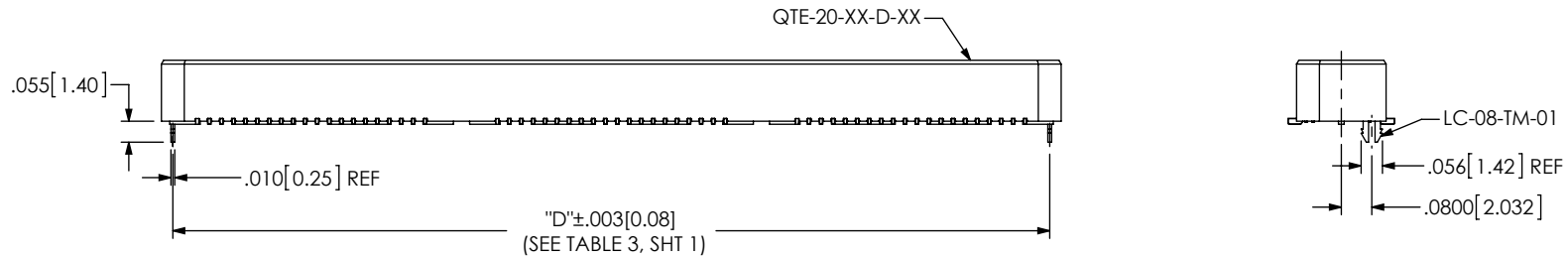


FIG 2
 -LC: LOCKING CLIP OPTION
 (QTE-060-01-XXX-D-LC SHOWN)
 (DIFFERENT AS SHOWN, OTHERWISE SAME AS FIG 1)

No OF POS	"R"				"S"			
	-LC, -A, -FL	-GP, -SD	-RT1	-L	-LC, -A, -FL	-GP, -SD	-RT1	-L
-020	.788 [20.00]	1.305 [33.15]	1.438 [36.53]	.906 [23.00]	.256 [6.50]	.515 [13.07]	.581 [14.76]	.315 [7.99]
-040	1.575 [40.01]	2.093 [53.15]	2.226 [56.53]	1.693 [43.00]	.650 [16.50]	.908 [23.07]	.975 [24.76]	.709 [18.00]
-060	2.363 [60.01]	2.880 [73.15]	3.013 [76.53]	N/A	1.043 [26.50]	1.302 [33.07]	1.369 [34.76]	N/A
*-080	3.150 [80.01]	3.668 [93.15]	3.801 [96.53]	N/A	1.437 [36.50]	1.696 [43.07]	1.762 [44.76]	N/A
*-100	3.938 [100.01]	4.455 [113.16]	N/A	N/A	1.831 [46.50]	2.090 [53.07]	N/A	N/A

* = (SEE NOTE 11 & 14)

STYLE	"T"
-01	.173[4.39]
-02	.291[7.39]
-03	.409[10.39]
-04	.605[15.37]
-05	.721[18.31]
-06	.840[21.33]
-09	.528 [13.41]
-10	.567[14.37]

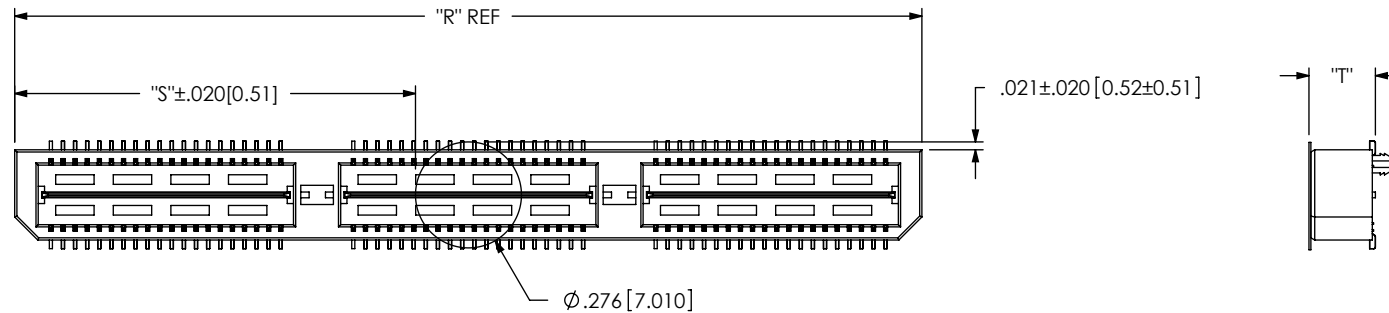


FIG 3
 -K: POLYIMIDE FILM PAD
 (USE K-DOT-.276-.375-.005)

<p>DO NOT SCALE DRAWING</p> <p>SHEET SCALE: 2:1</p>	<p>PROPRIETARY NOTE</p> <p>THIS DOCUMENT CONTAINS CONFIDENTIAL AND PROPRIETARY INFORMATION AND ALL DESIGN, MANUFACTURING, REPRODUCTION, USE, PATENT RIGHTS AND SALES RIGHTS ARE EXPRESSLY RESERVED BY SAMTEC, INC. THIS DOCUMENT SHALL NOT BE DISCLOSED, IN WHOLE OR PART, TO ANY UNAUTHORIZED PERSON OR ENTITY NOR REPRODUCED, TRANSFERRED OR INCORPORATED IN ANY OTHER PROJECT IN ANY MANNER WITHOUT THE EXPRESS WRITTEN CONSENT OF SAMTEC, INC.</p>	<p>520 PARK EAST BLVD, NEW ALBANY, IN 47150 PHONE: 812-944-6733 FAX: 812-948-5047 e-Mail: info@SAMTEC.com code 55322</p>
	<p>DESCRIPTION: .8mm DOUBLE ROW HS TERMINAL ASSEMBLY</p>	<p>DWG. NO. QTE-XXX-XX-XXX-D-XXX</p>
	<p>BY: DEAN P 09-14-2010</p>	<p>SHEET 2 OF 7</p>

TABLE 6		
POS	"E"	"F"
-020	1.305 [33.15]	1.013 [25.72]
-040	2.093 [53.15]	1.800 [45.72]
-060	2.880 [73.15]	2.588 [65.72]
*-080	3.668 [93.15]	3.375 [85.73]
*-100	4.455 [113.16]	4.163 [105.73]

* = (SEE NOTE 14)

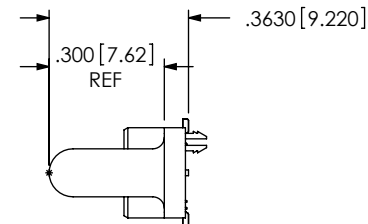
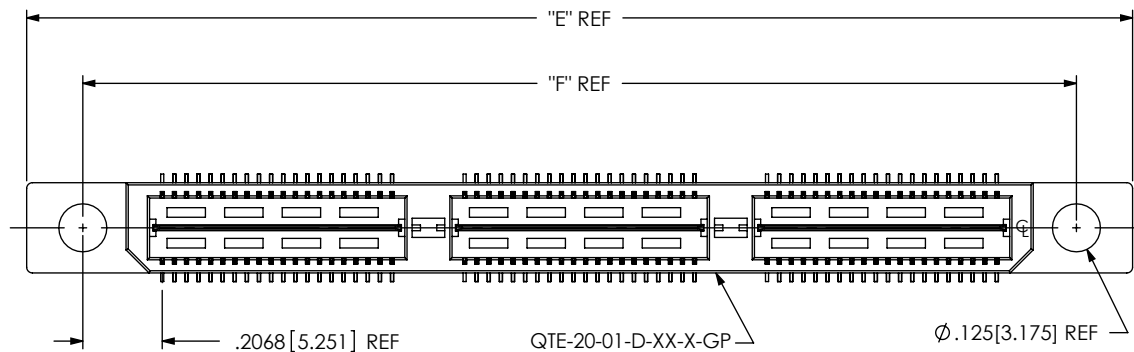


FIG 4
 -GP: GUIDE POST OPTION
 (QTE-060-01-XXX-D-GP SHOWN)
 (DIFFERENT AS SHOWN, OTHERWISE SAME AS FIG 1)
 (AVAILABLE ON STYLE -01 ONLY)

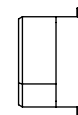
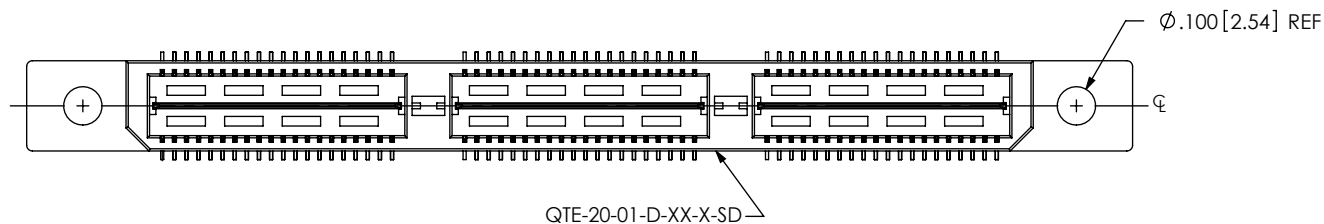


FIG 5
 -SD: SCREW DOWN OPTION
 (QTE-060-01-XXX-D-A-SD SHOWN)
 (DIFFERENT AS SHOWN, OTHERWISE SAME AS FIG 4)
 (AVAILABLE ON STYLE -01 ONLY)

<p>DO NOT SCALE DRAWING</p> <p>SHEET SCALE: 2:1</p>	<p>PROPRIETARY NOTE</p> <p>THIS DOCUMENT CONTAINS CONFIDENTIAL AND PROPRIETARY INFORMATION AND ALL DESIGN, MANUFACTURING, REPRODUCTION, USE, PATENT RIGHTS AND SALES RIGHTS ARE EXPRESSLY RESERVED BY SAMTEC, INC. THIS DOCUMENT SHALL NOT BE DISCLOSED, IN WHOLE OR PART, TO ANY UNAUTHORIZED PERSON OR ENTITY NOR REPRODUCED, TRANSFERRED OR INCORPORATED IN ANY OTHER PROJECT IN ANY MANNER WITHOUT THE EXPRESS WRITTEN CONSENT OF SAMTEC, INC.</p>	<p>samtec</p> <p>520 PARK EAST BLVD, NEW ALBANY, IN 47150 PHONE: 812-944-6733 FAX: 812-948-5047 e-Mail: info@SAMTEC.com code 55322</p>
	<p>DESCRIPTION:</p> <p>.8mm DOUBLE ROW HS TERMINAL ASSEMBLY</p>	
	<p>DWG. NO.</p> <p>QTE-XXX-XX-XXX-D-XXX</p>	
<p>BY: DEAN P 09-14-2010</p>		<p>SHEET 3 OF 7</p>

FIG 6
QTE-060-04-X-D-LC SHOWN
(DIFFERENT AS SHOWN, OTHERWISE SAME AS FIG 1)
(STYLES -04, -05 & -06)

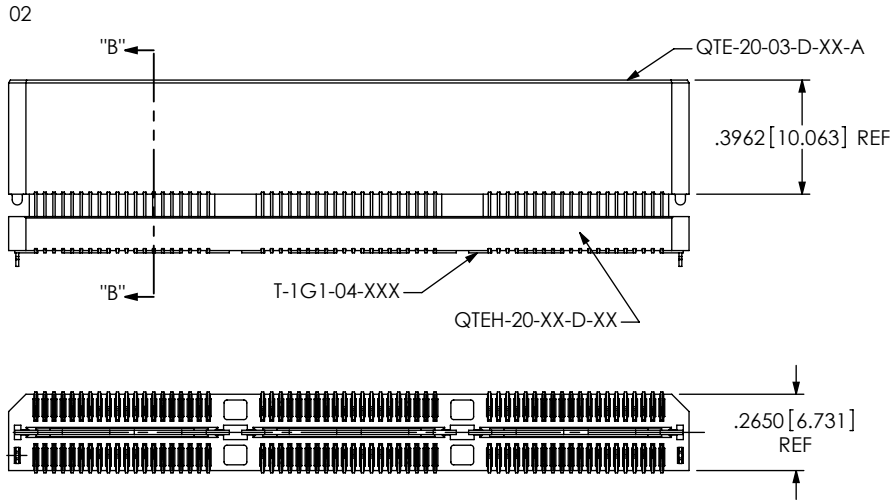
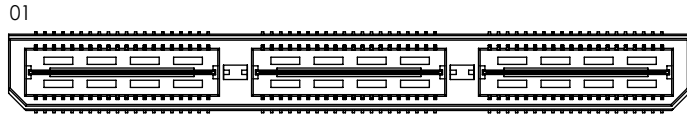


TABLE 7						MATED HEIGHT WITH QSE-01
STYLE	"B"	GROUND PLANE	TERMINAL	BOTTOM SPACER BODY	TOP BODY	
-04	.6010 [15.265]	T-1G1-04-XXX	T-1S41-04-XXX	QTEH-20-01-D-XX-X	QTE-20-03-D-XX-X	.630 [16.00] REF
-05	.7190 [18.263]	T-1G1-05-XXX	T-1S41-05-XXX	QTEH-20-01-D-XX-X	QTE-20-03-D-XX-X	.748 [19.00] REF
-06	.8370 [21.260]	T-1G1-06-XXX	T-1S41-06-XXX	QTEH-20-02-D-XX-X	QTE-20-03-D-XX-X	.866 [22.00] REF
-07	.9540 [24.232]	T-1G17-01-XXX	T-1S61-21-XXX	QTEH-20-04-D-XX-X	QTE-20-02-D-XX-X	.984 [25.00] REF
-08	1.1510 [29.235]	T-1G17-02-XXX	T-1S61-22-XXX	QTEH-20-04-D-XX-X	QTE-20-02-D-XX-X	1.181 [30.00] REF
-09	.5220 [13.259]	T-1G1-09-XXX	T-1S60-09-XXX	QTEH-20-01-D-XX-X	QTE-20-02-D-XX-X	.551 [14.00] REF
-10	.5606 [14.239]	T-1G1-10-XXX	T-1S60-10-XXX	QTEH-20-01-D-XX-X	QTE-20-02-D-XX-X	.591 [15.00] REF

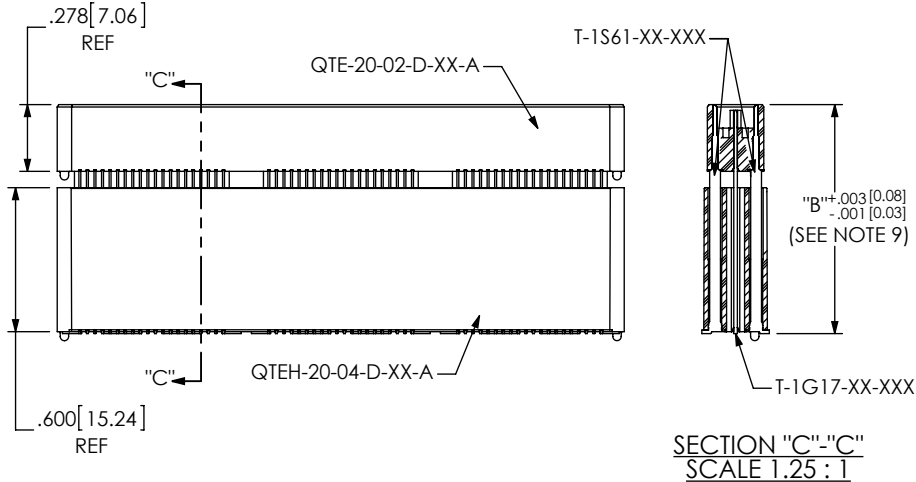
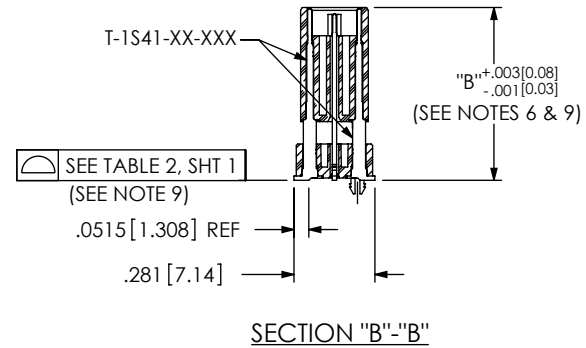


FIG 7
QTE-060-07-X-D-A SHOWN
(DIFFERENT AS SHOWN, OTHERWISE SAME AS FIG 6)
(STYLES -07 & -08)

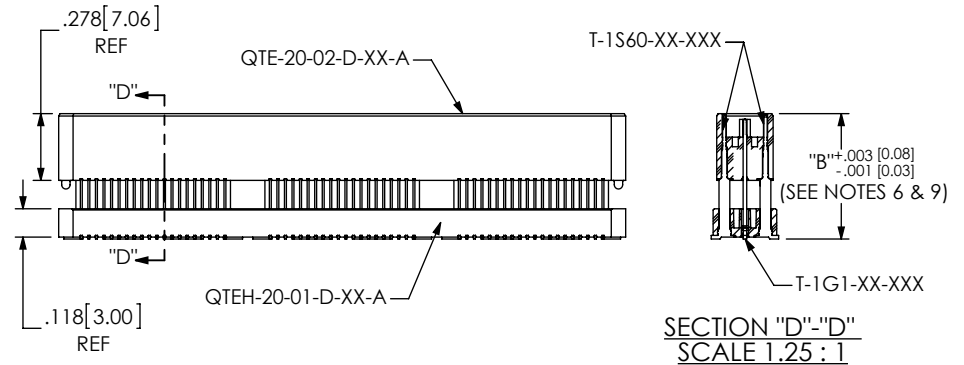


FIG 8
QTE-060-09-X-D-A SHOWN
(DIFFERENT AS SHOWN, OTHERWISE SAME AS FIG 6)
(STYLES -09 & -10)

F:\DWG\MISC\MKTG\QTE-XXX-XX-XXX-D-XXX-MKT.SLDDRW


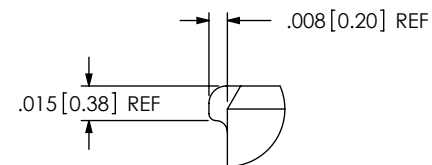
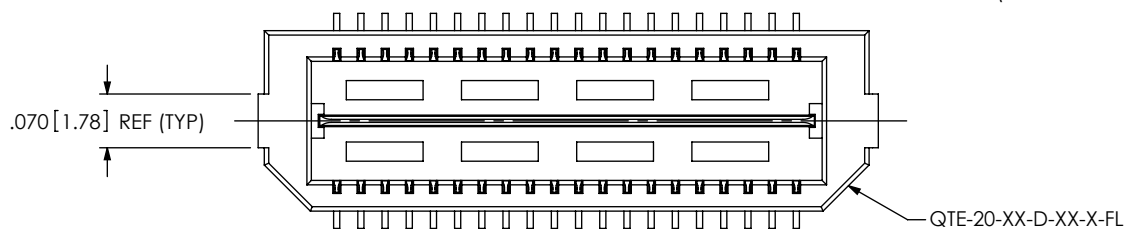
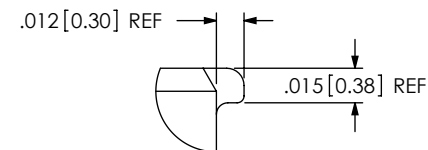
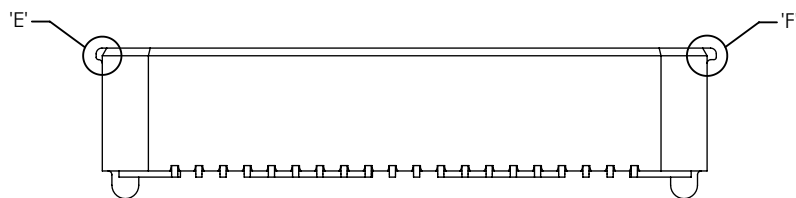
<p>DO NOT SCALE DRAWING</p> <p>SHEET SCALE: 1.5:1</p>	<p>PROPRIETARY NOTE</p> <p>THIS DOCUMENT CONTAINS CONFIDENTIAL AND PROPRIETARY INFORMATION AND ALL DESIGN, MANUFACTURING, REPRODUCTION, USE, PATENT RIGHTS AND SALES RIGHTS ARE EXPRESSLY RESERVED BY SAMTEC, INC. THIS DOCUMENT SHALL NOT BE DISCLOSED, IN WHOLE OR PART, TO ANY UNAUTHORIZED PERSON OR ENTITY NOR REPRODUCED, TRANSFERRED OR INCORPORATED IN ANY OTHER PROJECT IN ANY MANNER WITHOUT THE EXPRESS WRITTEN CONSENT OF SAMTEC, INC.</p>	 <p>520 PARK EAST BLVD. NEW ALBANY, IN 47150 PHONE: 812-944-6733 FAX: 812-948-5047 e-Mail: info@SAMTEC.com code 55322</p>
	<p>DESCRIPTION:</p> <p>.8mm DOUBLE ROW HS TERMINAL ASSEMBLY</p>	
	<p>DWG. NO.</p> <p>QTE-XXX-XX-XXX-D-XXX</p>	
<p>BY: DEAN P 09-14-2010</p>		<p>SHEET 4 OF 7</p>

FIG 9
 -FL: FRICTION LOCKS
 (QTE-020-01-XXX-D-A-FL SHOWN)
 (DIFFERENT AS SHOWN, OTHERWISE SAME AS FIG 1)
 (ONLY AVAILABLE ON -01 & -02 LEAD STYLES)
 (NOT AVAILABLE WITH -GP, -SD OPTIONS)



DETAIL 'E'
 SCALE 12:1



DETAIL 'F'
 SCALE 12:1

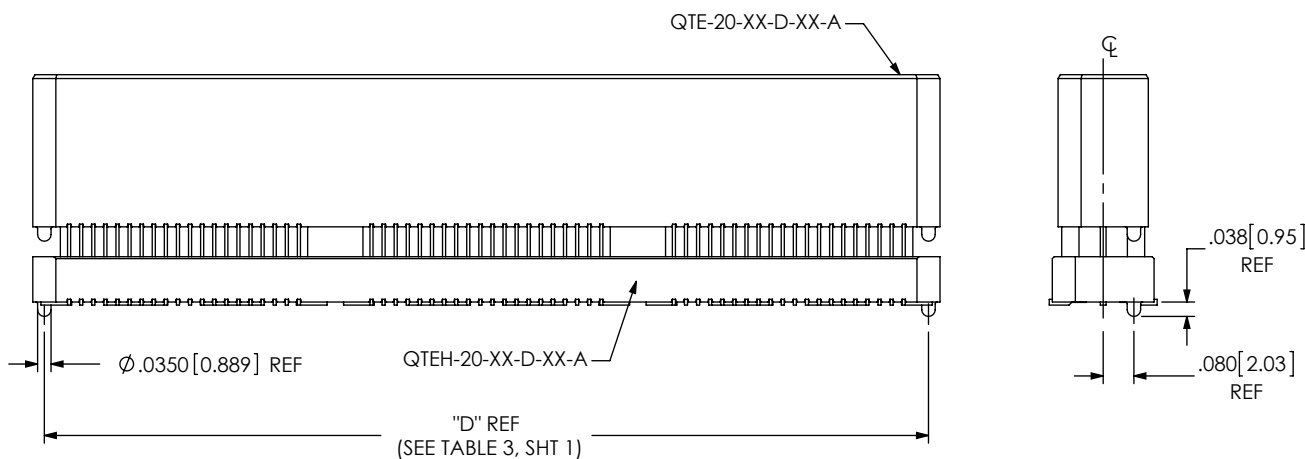
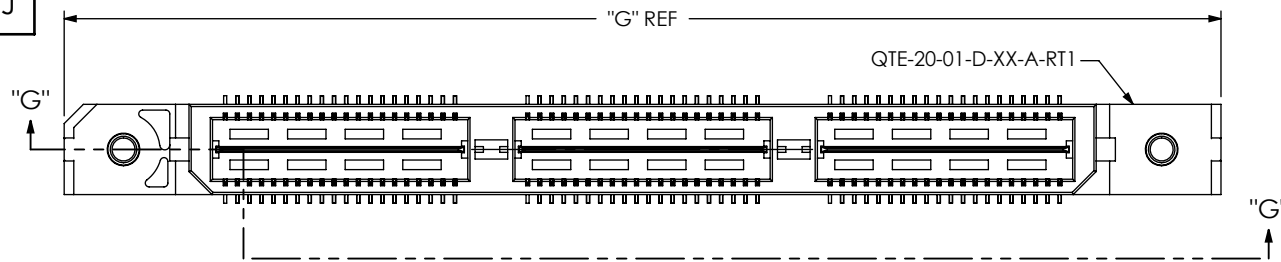


FIG 10
 (QTE-020-04-XXX-D-A SHOWN)
 (DIFFERENT AS SHOWN, OTHERWISE SAME AS FIG 1)
 (STYLES -04, -05, -06, -07, -08, -09 & -10, SEE TABLE 7, SHT 4)

<p>PROPRIETARY NOTE</p> <p>THIS DOCUMENT CONTAINS CONFIDENTIAL AND PROPRIETARY INFORMATION AND ALL DESIGN, MANUFACTURING, REPRODUCTION, USE, PATENT RIGHTS AND SALES RIGHTS ARE EXPRESSLY RESERVED BY SAMTEC, INC. THIS DOCUMENT SHALL NOT BE DISCLOSED, IN WHOLE OR PART, TO ANY UNAUTHORIZED PERSON OR ENTITY NOR REPRODUCED, TRANSFERRED OR INCORPORATED IN ANY OTHER PROJECT IN ANY MANNER WITHOUT THE EXPRESS WRITTEN CONSENT OF SAMTEC, INC.</p>		<p>samtec</p> <p>520 PARK EAST BLVD, NEW ALBANY, IN 47150 PHONE: 812-944-6733 FAX: 812-948-5047 e-Mail: info@SAMTEC.com code 55322</p>	
<p>DO NOT SCALE DRAWING</p> <p>SHEET SCALE: 2:1</p>		<p>DESCRIPTION: .8mm DOUBLE ROW HS TERMINAL ASSEMBLY</p> <p>DWG. NO. QTE-XXX-XX-XXX-D-XXX</p>	
<p>BY: DEAN P 09-14-2010</p>		<p>SHEET 5 OF 7</p>	



POS	"G"	"H"
-020	1.438 [36.53]	1.129 [28.68]
-040	2.226 [56.53]	1.917 [48.68]
-060	3.013 [76.53]	2.704 [68.68]
*-080	3.801 [96.53]	3.492 [88.68]
*-100	N/A	N/A

* = (SEE NOTE 14)

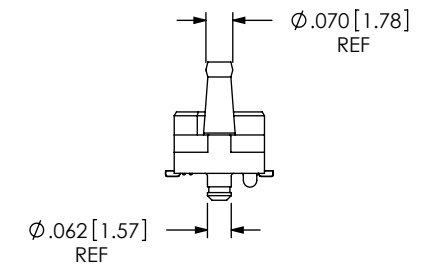
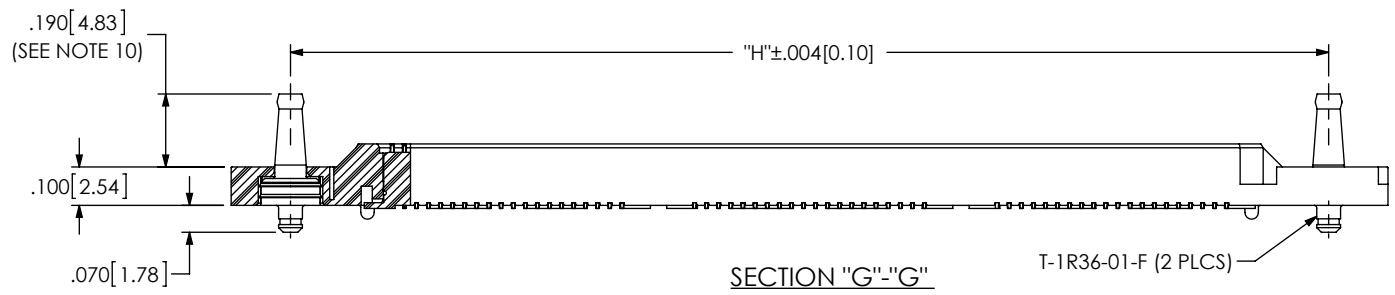
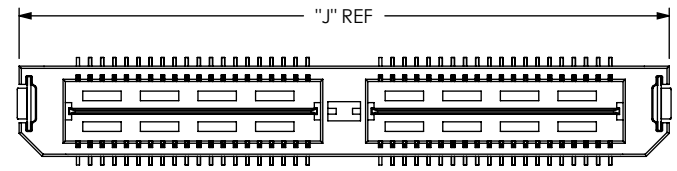


FIG 11
 -RT1: RETENTION OPTION
 (QTE-060-01-XXX-D-A-RT1 SHOWN)
 (DIFFERENT AS SHOWN, OTHERWISE SAME AS FIG 1)
 (ONLY AVAILABLE ON -01 LEAD STYLE) (MUST USE -A OPTION)
 (NOT AVAILABLE WITH -LC, -GP, -SD, OR -FL OPTIONS)
 (NOT AVAILABLE ON -100 POSITION)



POS	"J"	"K"	"L"
-020	.906 [23.00]	.915 [23.24]	.854 [21.69]
-040	1.693 [43.00]	1.703 [43.24]	1.642 [41.69]
-060	N/A	N/A	N/A
*-080	N/A	N/A	N/A
*-100	N/A	N/A	N/A

* = (SEE NOTE 14)

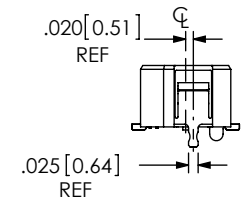
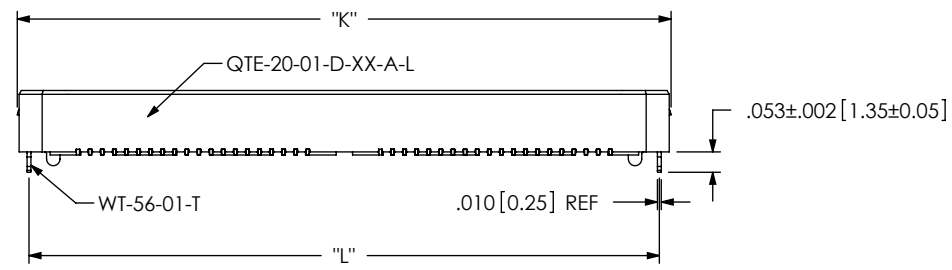


FIG 12
 -L: LATCHING OPTION
 (QTE-040-01-XXX-D-A-L SHOWN)
 (DIFFERENT AS SHOWN, OTHERWISE SAME AS FIG 1)
 (40 POS. MAX.) (MUST USE -A OPTION)
 (AVAILABLE ON -01 LEAD STYLE ONLY)
 (NOT AVAILABLE WITH -LC, -GP, -SD, -FL, OR -RT1)

PROPRIETARY NOTE
 THIS DOCUMENT CONTAINS CONFIDENTIAL AND PROPRIETARY INFORMATION AND ALL DESIGN, MANUFACTURING, REPRODUCTION, USE, PATENT RIGHTS AND SALES RIGHTS ARE EXPRESSLY RESERVED BY SAMTEC, INC. THIS DOCUMENT SHALL NOT BE DISCLOSED, IN WHOLE OR PART, TO ANY UNAUTHORIZED PERSON OR ENTITY NOR REPRODUCED, TRANSFERRED OR INCORPORATED IN ANY OTHER PROJECT IN ANY MANNER WITHOUT THE EXPRESS WRITTEN CONSENT OF SAMTEC, INC.



520 PARK EAST BLVD, NEW ALBANY, IN 47150
 PHONE: 812-944-6733 FAX: 812-948-5047
 e-Mail: info@SAMTEC.com code 55322

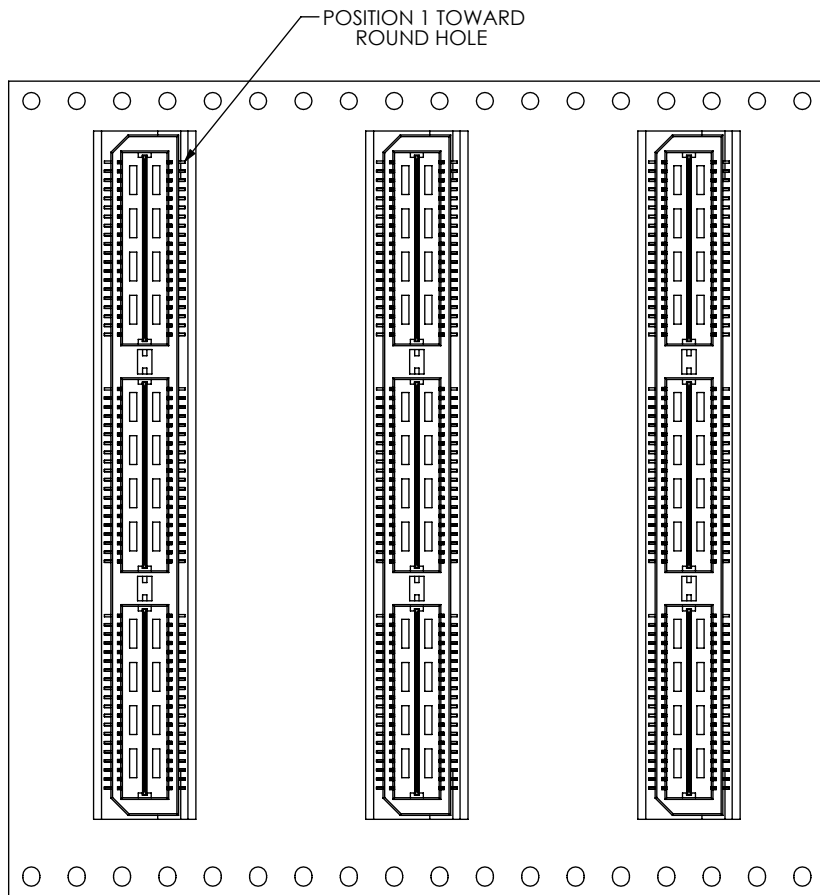
DO NOT SCALE DRAWING
 SHEET SCALE: 2:1

DESCRIPTION:
 .8mm DOUBLE ROW HS TERMINAL ASSEMBLY
 DWG. NO.

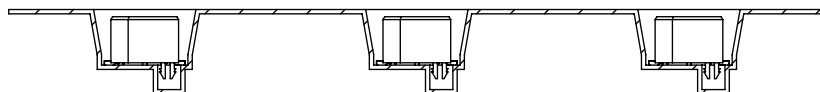
QTE-XXX-XX-XXX-D-XXX

BY: DEAN P 09-14-2010 SHEET 6 OF 7


FIG 13
 -TR: PACKAGING OPTION
 (QTE-060-01-XXX-D-LC-TR SHOWN)
 (DIFFERENT AS SHOWN, OTHERWISE SAME AS FIG 1)
 (60 POS MAX)
 (40 POS MAX WITH -GP OPTION)
 (NOT AVAILABLE ON LEAD SYTTLES -05, -06, -07 & -08)



USER DIRECTION OF UN-REELING →
 POCKET NOT DETAILED



CRITICAL DIMENSION INSPECTION INSTRUCTION TABLE	
ASSEMBLY OPERATION	IN PROCESS INSPECTION
FILL T-1SXX	C1, C2, C3, C4, C5
ADD -LC OPTION	C14
ADD -RT1 OPTION	C6, C8
ADD -L OPTION	C9, C10, C11
ADD -K OPTION	C16, C15
CPC'S INTENTIONALLY DELETED: C7, C12	

<p>DO NOT SCALE DRAWING</p> <p>SHEET SCALE: 1:0.8</p>	<p>PROPRIETARY NOTE</p> <p>THIS DOCUMENT CONTAINS CONFIDENTIAL AND PROPRIETARY INFORMATION AND ALL DESIGN, MANUFACTURING, REPRODUCTION, USE, PATENT RIGHTS AND SALES RIGHTS ARE EXPRESSLY RESERVED BY SAMTEC, INC. THIS DOCUMENT SHALL NOT BE DISCLOSED, IN WHOLE OR PART, TO ANY UNAUTHORIZED PERSON OR ENTITY NOR REPRODUCED, TRANSFERRED OR INCORPORATED IN ANY OTHER PROJECT IN ANY MANNER WITHOUT THE EXPRESS WRITTEN CONSENT OF SAMTEC, INC.</p>	 <p>520 PARK EAST BLVD, NEW ALBANY, IN 47150 PHONE: 812-944-6733 FAX: 812-948-5047 e-Mail info@SAMTEC.com code 55322</p>
	<p>DESCRIPTION: .8mm DOUBLE ROW HS TERMINAL ASSEMBLY</p> <p>DWG. NO. QTE-XXX-XX-XXX-D-XXX</p>	
	<p>BY: DEAN P 09-14-2010</p>	