



Chipsmall Limited consists of a professional team with an average of over 10 year of expertise in the distribution of electronic components. Based in Hongkong, we have already established firm and mutual-benefit business relationships with customers from,Europe,America and south Asia,supplying obsolete and hard-to-find components to meet their specific needs.

With the principle of “Quality Parts,Customers Priority,Honest Operation,and Considerate Service”,our business mainly focus on the distribution of electronic components. Line cards we deal with include Microchip,ALPS,ROHM,Xilinx,Pulse,ON,Everlight and Freescale. Main products comprise IC,Modules,Potentiometer,IC Socket,Relay,Connector.Our parts cover such applications as commercial,industrial, and automotives areas.

We are looking forward to setting up business relationship with you and hope to provide you with the best service and solution. Let us make a better world for our industry!



## Contact us

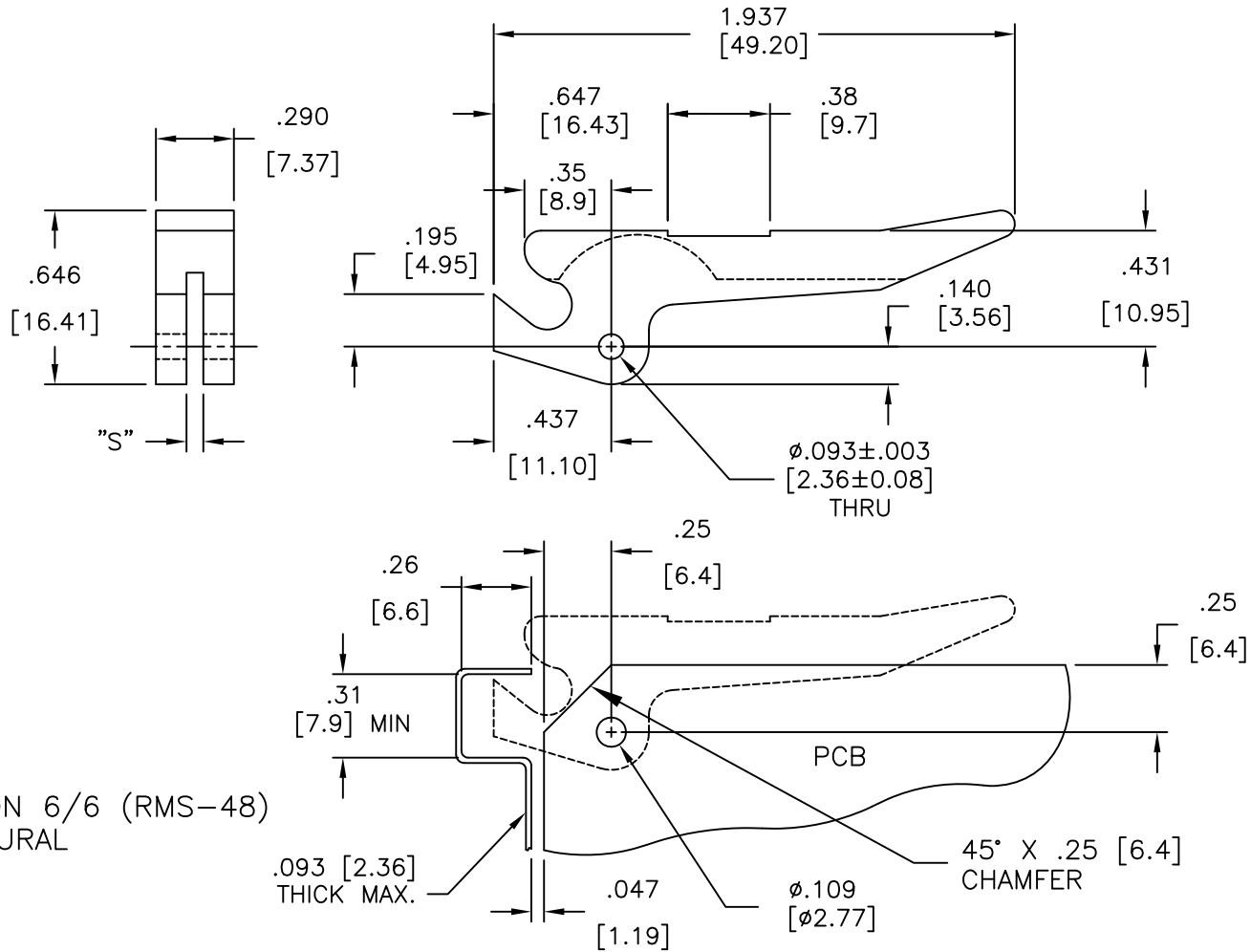
Tel: +86-755-8981 8866 Fax: +86-755-8427 6832

Email & Skype: info@chipsmall.com Web: www.chipsmall.com

Address: A1208, Overseas Decoration Building, #122 Zhenhua RD., Futian, Shenzhen, China



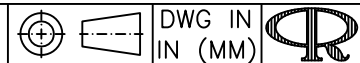
PART NO.	"S"	PCB THICKNESS
R1001-062	.075 (1.9)	.062 (1.6)
R1002-093	.100 (2.5)	.093 (2.4)



NOTES:  
 1. MAT'L: NYLON 6/6 (RMS-48)  
 COLOR: NATURAL

I	SEE CO 200521 FOR CHANGES	SK 04.19.10
H	SEE CO 200309 FOR CHANGES	SK 01.16.09
G	SEE CO 200106 FOR CHANGES	SK 01.15.08
F	SEE ECN #933 FOR CHANGES	SK 02.02.05
E	ADDED ".35" DIM.; ADDED THICKNESS NOTE CHANGED "PANEL" TO "PCB" IN TABLE	SJ 01.18.02
D	CHANGED FILE NO. AND TITLE BLOCK	SM 05.15.01
C	CHAMFER ADDED	PB 08.18.95
B	METRIC EQUIVALENTS CORRECTED	PB 08.11.95
A	DIM. "S" ADDED	PB 10.11.94
REV	DESCRIPTION	ENGR DATE

TITLE: INSERTER/EXTRACTOR



TOLERANCES UNLESS NOTED .XX=±.010 .XXX=±.005 FRAC=1/64 ANG=1°	FILE # R1001 MAT'L: SEE NOTES RE: RICHCO, INC.	DWN: P.B. DT: 05-11-94 APP: DT:	APP: DT:	DWG IN IN (MM)	FINAL	PRINT TYPE CA
		RICHCO INC. PO BOX 804238, CHICAGO, 60680 (773) 539-4060			PART # R1001 SERIES	