



Chipsmall Limited consists of a professional team with an average of over 10 year of expertise in the distribution of electronic components. Based in Hongkong, we have already established firm and mutual-benefit business relationships with customers from,Europe,America and south Asia,supplying obsolete and hard-to-find components to meet their specific needs.

With the principle of “Quality Parts,Customers Priority,Honest Operation,and Considerate Service”,our business mainly focus on the distribution of electronic components. Line cards we deal with include Microchip,ALPS,ROHM,Xilinx,Pulse,ON,Everlight and Freescale. Main products comprise IC,Modules,Potentiometer,IC Socket,Relay,Connector.Our parts cover such applications as commercial,industrial, and automotives areas.

We are looking forward to setting up business relationship with you and hope to provide you with the best service and solution. Let us make a better world for our industry!



## Contact us

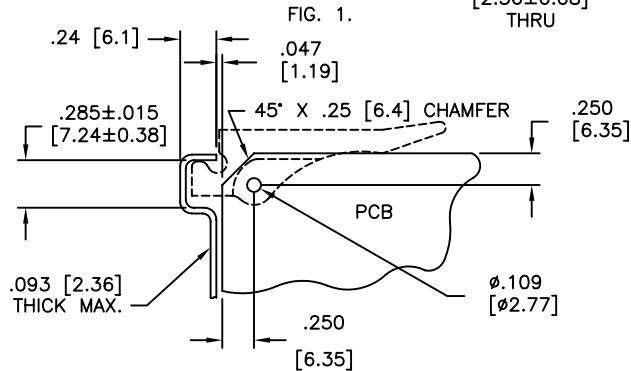
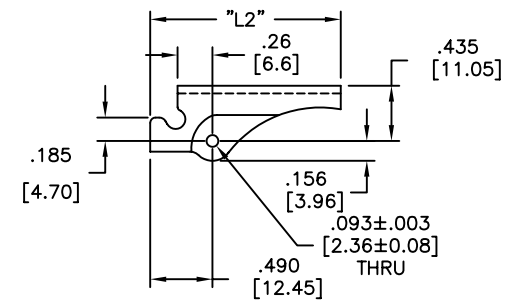
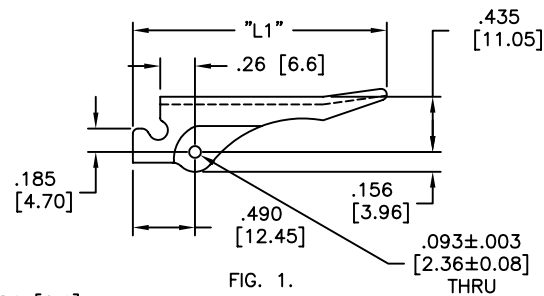
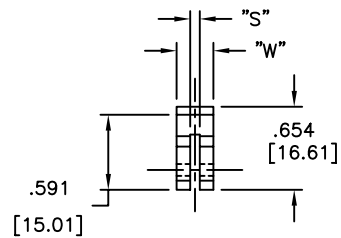
Tel: +86-755-8981 8866 Fax: +86-755-8427 6832

Email & Skype: info@chipsmall.com Web: www.chipsmall.com

Address: A1208, Overseas Decoration Building, #122 Zhenhua RD., Futian, Shenzhen, China



PART NO.	"S"	"W"	"L1"	"L2"	PCB THICKNESS	FIG. NO.
R1107-062	.075 (1.9)	.290 (7.4)	2.0 (50.8)	-	.062 (1.6)	1.
R11073-062	.075 (1.9)	.350 (8.9)	2.0 (50.8)	-	.062 (1.6)	
R11073-093	.100 (2.5)	.350 (8.9)	2.0 (50.8)	-	.093 (2.4)	
R110710-062	.075 (1.9)	.290 (7.4)	-	1.5 (38.1)	.062 (1.6)	2.
R1107310-062	.075 (1.9)	.350 (8.9)	-	1.5 (38.1)	.062 (1.6)	
R1107310-093	.100 (2.5)	.350 (8.9)	-	1.5 (38.1)	.093 (2.4)	



NOTES:

1. MATERIAL: NYLON 6/6 UL 94 V-0, GLASS FILLED (RMS-222).
2. COLOR: NATURAL.

H	SEE CO 200041 FOR CHANGES	SK 09.28.07
G	SEE ECN #1264 FOR CHANGES	SK 12.12.06
F	SEE ECN #1096 FOR CHANGES	SK 11.09.05
E	SEE ECN #933 FOR CHANGES	SK 02.02.05
D	ADDED ".26" DIM.; ADDED THICKNESS NOTE CHANGED "PANEL" TO "PCB" IN TABLE	SJ 01.18.02
C	CHANGED FILE NUMBER	SM 05.16.01
B	ADDED FIG. NO.; CHANGED FILE NO. AND DIM "S" POSITION	SM 04.10.01
A	METRIC EQUIVALENTS CORRECTED	PB 08.11.95
REV	DESCRIPTION	ENGR DATE

TITLE: INSERTER/EXTRACTOR				DWG IN IN(mm)	QR
TOLERANCES UNLESS NOTED .XX=±.010 .XXX=±.005 FRAC=1/64 ANG=1°	FILE # R1107	DWN: J.B.	APP:	FINAL	
	MAT'L: SEE NOTES	DT: 04-15-97	DT:	PART #	PRINT TYPE
	RE: RICHCO, INC.	RICHCO INC. PO BOX 804238, CHICAGO, 60680 (773) 539-4060		R1107 SERIES	CA