



Chipsmall Limited consists of a professional team with an average of over 10 year of expertise in the distribution of electronic components. Based in Hongkong, we have already established firm and mutual-benefit business relationships with customers from,Europe,America and south Asia,supplying obsolete and hard-to-find components to meet their specific needs.

With the principle of “Quality Parts,Customers Priority,Honest Operation,and Considerate Service”,our business mainly focus on the distribution of electronic components. Line cards we deal with include Microchip,ALPS,ROHM,Xilinx,Pulse,ON,Everlight and Freescale. Main products comprise IC,Modules,Potentiometer,IC Socket,Relay,Connector.Our parts cover such applications as commercial,industrial, and automotives areas.

We are looking forward to setting up business relationship with you and hope to provide you with the best service and solution. Let us make a better world for our industry!



Contact us

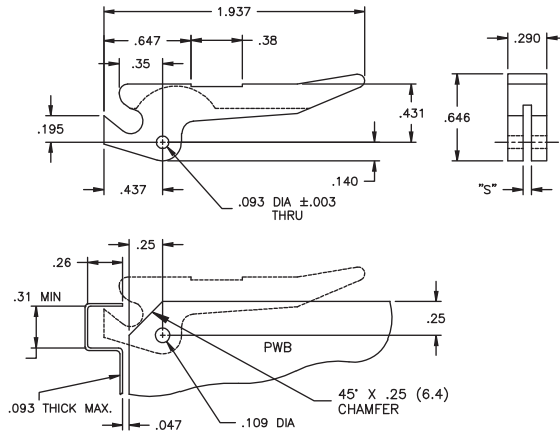
Tel: +86-755-8981 8866 Fax: +86-755-8427 6832

Email & Skype: info@chipsmall.com Web: www.chipsmall.com

Address: A1208, Overseas Decoration Building, #122 Zhenhua RD., Futian, Shenzhen, China



R1001 Inserter / Extractor



Features

- Passivated stainless steel pins (per MIL-P-10971), supplied with each inserter/extractor

Roll Pins for use with following Inserter/Extractors		
RRP-250	RRP-312	RRP-375
R1001-062	R11073-062	R1209-062
R1002-093	R11073-093	R1209-093
R1003-125	R11073-125	R1209-125
R1107-062	R1107310-062	-
R110710-062	R1107310-093	-
-	R1107310-125	-

Material: Nylon 6/6, RMS-48 • Color: Natural		
Part No.	Standard Pack: 100 per bag	
	"S"	PCB Thickness
R1001-062	.075 (1.9)	.062 (1.6)
R1002-093	.100 (2.5)	.093 (2.4)
R1003-125	.140 (3.6)	.125 (3.2)

R1107 Inserter / Extractor

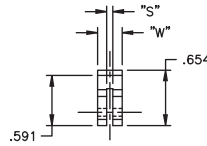


Fig. 1

Fig. 2

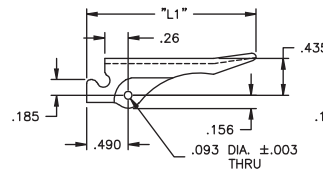


FIG. 1.

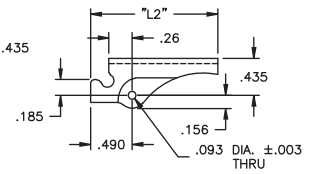
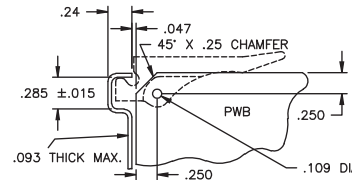
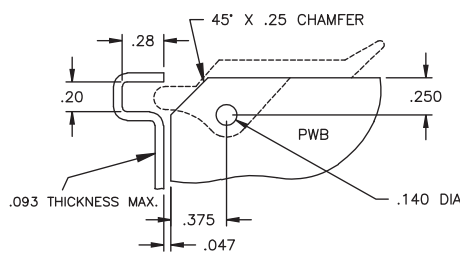
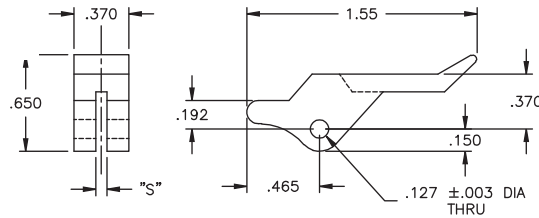


FIG. 2.

Material: Glass filled nylon per ASTM D4066 PA111 G30F04 Color: Natural						
Part No.	Standard Pack: 100 per bag					Fig. #
	"S"	"W"	"L1"	"L2"	PCB Thickness	
R1107-062	.075 (1.9)	.29 (7.4)	2.0 (50.8)		.062 (1.6)	1
R11073-062	.075 (1.9)	.35 (8.9)			.093 (2.4)	
R11073-093	.100 (2.5)				.125 (3.2)	
R11073-125	.140 (3.6)	.29 (7.4)		1.5 (38.1)	.062 (1.6)	2
R110710-062	.075 (1.9)	.35 (8.9)			.093 (2.4)	
R1107310-062	.075 (1.9)				.125 (3.2)	
R1107310-093	.100 (2.5)					
R1107310-125	.140 (3.6)					

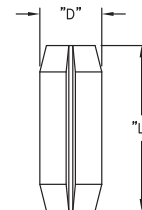


R1209 Inserter / Extractor



Material: Nylon 6/6, RMS-48 Color: Natural		
Part No.	Standard Pack: 100 per bag	
	"S"	PCB Thckns.
R1209-062	.075 (1.9)	.062 (1.6)
R1209-093	.100 (2.5)	.093 (2.4)
R1209-125	.140 (3.6)	.125 (3.2)

RRP Round Roll Pins



Material: Passivated Stainless Steel per MIL-P-10971 Color: Silver		
Part No.	Standard Pack: 100 per bag	
	"D"	"L"
RRP-250	3/32 (2.4)	1/4 (6.4)
RRP-312	3/32 (2.4)	5/16 (7.9)
RRP-375	1/8 (3.2)	3/8 (9.5)