



Chipsmall Limited consists of a professional team with an average of over 10 year of expertise in the distribution of electronic components. Based in Hongkong, we have already established firm and mutual-benefit business relationships with customers from,Europe,America and south Asia,supplying obsolete and hard-to-find components to meet their specific needs.

With the principle of “Quality Parts,Customers Priority,Honest Operation,and Considerate Service”,our business mainly focus on the distribution of electronic components. Line cards we deal with include Microchip,ALPS,ROHM,Xilinx,Pulse,ON,Everlight and Freescale. Main products comprise IC,Modules,Potentiometer,IC Socket,Relay,Connector.Our parts cover such applications as commercial,industrial, and automotives areas.

We are looking forward to setting up business relationship with you and hope to provide you with the best service and solution. Let us make a better world for our industry!



## Contact us

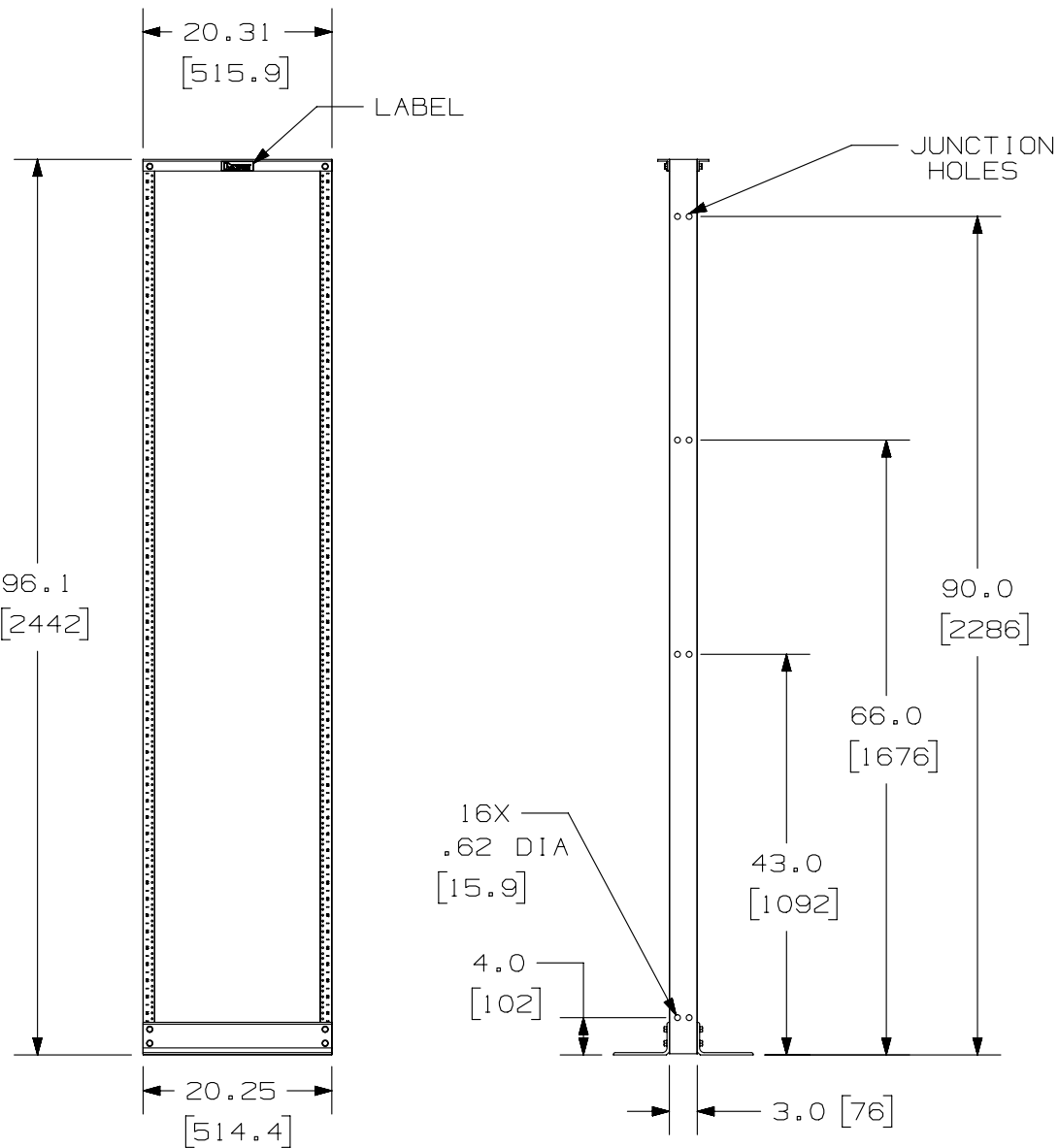
Tel: +86-755-8981 8866 Fax: +86-755-8427 6832

Email & Skype: [info@chipsmall.com](mailto:info@chipsmall.com) Web: [www.chipsmall.com](http://www.chipsmall.com)

Address: A1208, Overseas Decoration Building, #122 Zhenhua RD., Futian, Shenzhen, China



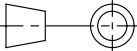
THIS COPY IS PROVIDED ON A RESTRICTED BASIS AND IS NOT TO BE USED IN ANY WAY DETRIMENTAL TO THE INTERESTS OF PANDUIT CORP.



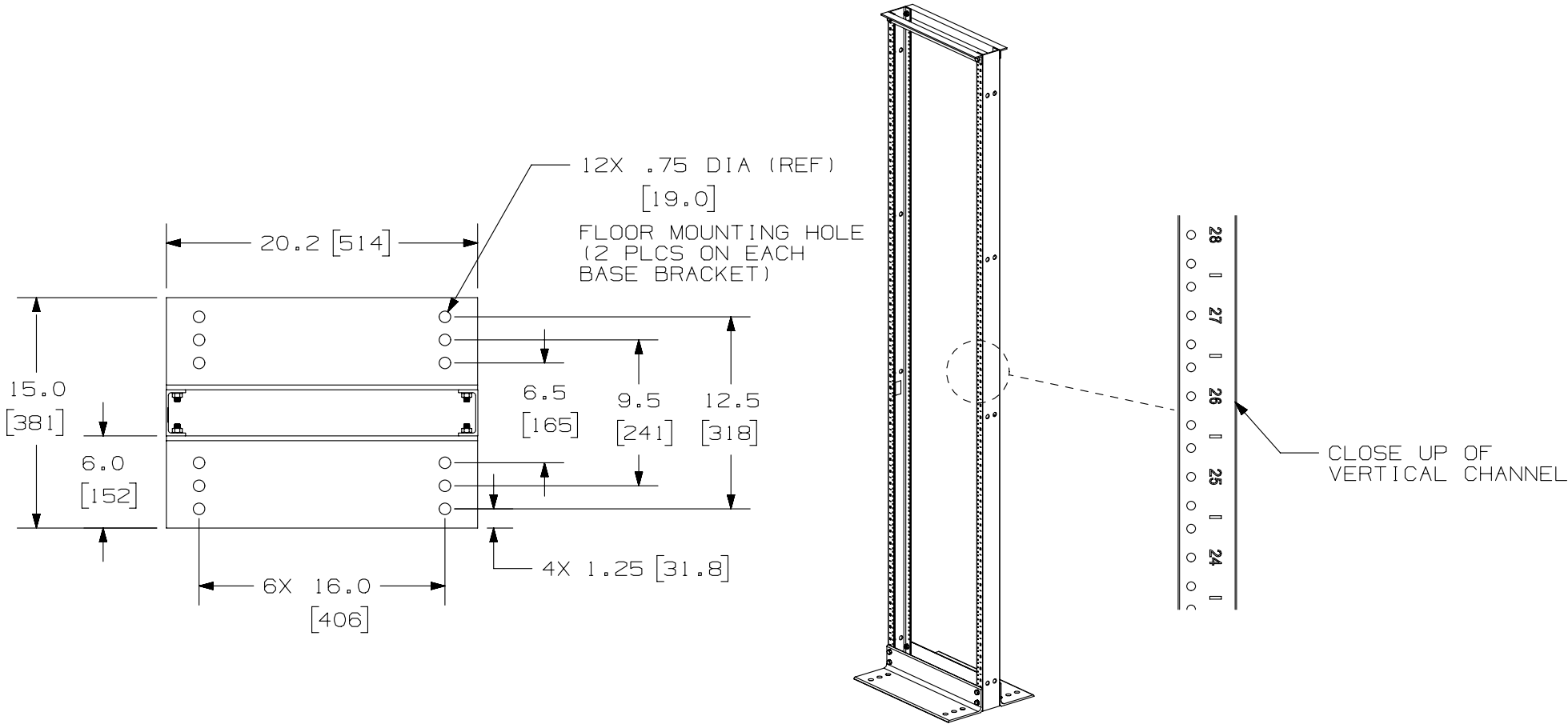
PANDUIT P/N	WEIGHT
R2P96	28.5 LB/EACH (13.0 KG/EACH)


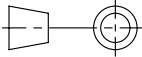
NOTES:

- CAN BE USED WITH ANY INDUSTRY STANDARD 19" COMPONENTS IN ADDITION TO ALL PANDUIT CABLE MANAGEMENT AND PATCH PANEL PRODUCTS.
- WILL HOLD UP TO 52 SINGLE RACK SPACINGS.
- EIA SPACING ON RACK: I.E., REF. HOLE SPACING ON UPRIGHT CHANNELS: .625, .625, .500, .625, .625, .500, ETC.
- ASSEMBLY IS REQUIRED.
- RACK PART THICKNESSES:
  - UPRIGHT CHANNEL: WEB; .14 ±.03  
FLANGE; .19 ±.03
  - TOP BRACKET: .19 ±.03
  - BASE BRACKET: .25 ±.03
- DIMENSIONS IN PARENTHESES ARE IN METRIC.
- ALL ASSEMBLY HARDWARE INCLUDED:
  - (12) 3/8-16 X 1" BLACK HEX HEAD CAP SCREW
  - (24) 3/8" PAINT PIERCING GROUNDING WASHER
  - (1) TUBE OF ANTI-OXIDIZING PASTE
  - (12) 3/8-16 BLACK HEX NUTS
  - (24) 12-24 X .5" SLOTTED PAN HEAD STEEL SCREWS
- LOAD RATING - 1000 LBS
- RU SPACING NUMBERS ARE CLEARLY PRINTED ON MOUNTING RAILS. RU NUMBERING IS BOTTOM-UP, WITH RU #1 AT BOTTOM AND RU #45 AT TOP.

TITLE					
8 FOOT CABLE MANAGEMENT RACK (R2P96)					
CUSTOMER DRAWING					
ITEM REVISION NAME			<b>PANDUIT</b>		
09V064AD/01					
DATASET FILE NAME			MATERIAL:		
09V064AD_DC/01A					
UNLESS OTHERWISE SPECIFIED, DIMENSIONAL TOLERANCES ARE: IN [ mm ]			ALUMINUM		
.X ± .XX ±					
.XXX ± ANGLES ±			DRAWING NUMBER:		
					
THIRD ANGLE PROJECTION			09V064AD - DC		
DRAWN BY	DATE	CHK	SCALE	SIZE	
BAME	5-27-10	DPN	NONE	A	
SHT 1 OF 2					

REV	DATE	BY	CHK	APR	DESCRIPTION	ECN
01A	11-14-13	BAME	PM	CMK	UPDATED VIEWS	09V064AD-DC
00A	5-27-10	BAME	DPN	CMK	DRAWING RELEASED	09V064AD-DC



							TITLE					
							8 FOOT CABLE MANAGEMENT RACK (R2P96)					
							CUSTOMER DRAWING					
							ITEM REVISION NAME		09V064AD/01			
							DATASET FILE NAME		09V064AD_DC/01A			
							UNLESS OTHERWISE SPECIFIED, DIMENSIONAL TOLERANCES ARE: IN [ mm ]		MATERIAL:			
							<div><div>.X ±</div><div>.XX ±</div></div> <div><div>.XXX ±</div><div>ANGLES ±</div></div> 		ALUMINUM			
							THIRD ANGLE PROJECTION		DRAWING NUMBER:			
									09V064AD - DC			
REV	DATE	BY	CHK	APR	DESCRIPTION	ECN	DRAWN BY	DATE	CHK	SCALE	SHT 2 OF 2	SIZE
							BAME	5-27-10	DPN	NONE		A
01A	11-14-13	BAME	PM	CMK	SEE SHEET 1 OF 2 FOR REVISIONS	09V064AD-DC						
00A	5-27-10	BAME	DPN	CMK	SEE SHEET 1 OF 2 FOR REVISIONS	09V064AD-DC						