



Chipsmall Limited consists of a professional team with an average of over 10 year of expertise in the distribution of electronic components. Based in Hongkong, we have already established firm and mutual-benefit business relationships with customers from,Europe,America and south Asia,supplying obsolete and hard-to-find components to meet their specific needs.

With the principle of “Quality Parts,Customers Priority,Honest Operation,and Considerate Service”,our business mainly focus on the distribution of electronic components. Line cards we deal with include Microchip,ALPS,ROHM,Xilinx,Pulse,ON,Everlight and Freescale. Main products comprise IC,Modules,Potentiometer,IC Socket,Relay,Connector.Our parts cover such applications as commercial,industrial, and automotives areas.

We are looking forward to setting up business relationship with you and hope to provide you with the best service and solution. Let us make a better world for our industry!



Contact us

Tel: +86-755-8981 8866 Fax: +86-755-8427 6832

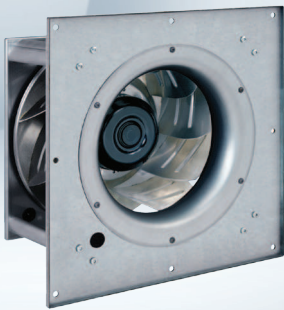
Email & Skype: info@chipsmall.com Web: www.chipsmall.com

Address: A1208, Overseas Decoration Building, #122 Zhenhua RD., Futian, Shenzhen, China



EC centrifugal fans

backward curved, single inlet, Ø 500



Highlights:

- 9-blade fan, 3-phase fan motor
- Output: 10 VDC, max.10 mA, 20 VDC, max. 50 mA, slave 0-10 V
- Input: sensor 0-10 V or 4-20 mA, 24 V external programming, 0-10 VDC/ PWM control
- Integrated PID controller along with RS485 MODBUS RTU technology
- Over-temperature protected electronics / motor
- Soft start, alarm relay, motor current limit, PFC passive, line undervoltage / phase failure detection
- Control interface with SELV potential safely disconnected from the mains

Material: Impeller: Aluminum sheet
 Rotor: Coated in black
 Electronic housing: Die-cast aluminum
 Assembly: Galvanized steel with aluminum posts

Mounting position: Shaft horizontal or rotor on bottom; rotor on top on request

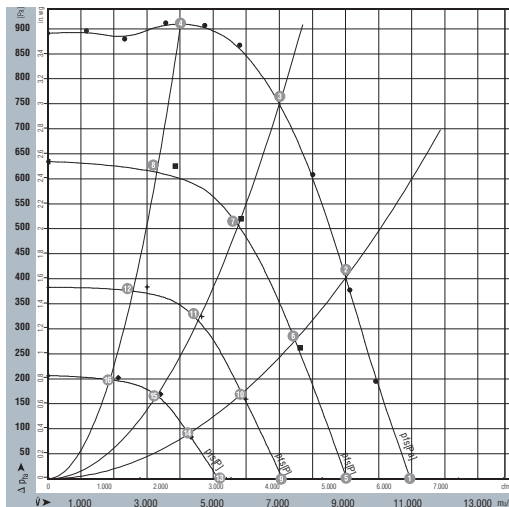
Condensate discharge holes: Rotor-side

Nominal Data

| Type | RadiPac | Motor | Air flow | | Frequency | Power input (1) | Speed (1) | Current draw (1) | Temperature range (1) | Mass | Ingress protection rating | Electrical wiring diagram | UL |
|-----------------|-----------------|-----------|----------|-----------|-----------|-----------------|-----------|------------------|-----------------------|------|---------------------------|---------------------------|-----|
| | | | CFM | VAC | | | | | | | | | |
| R3G500-AG34-63F | EG1R-240-500-30 | M3G150-FF | 6,450 | 200...240 | 50/60 | 2,700 | 1,700 | 7.8 | -25...55 | 50 | IP54 | A | Yes |
| R3G500-AG25-64F | EG1R-480-500-30 | M3G150-FF | 6,450 | 380...480 | 50/60 | 2,500 | 1,700 | 3.3 | -25...60 | 50 | IP54 | A | Yes |

(1) Nominal data at maximum load.

Curves



Measurement: LU-134784
 Measurement: LU-116713
 Measurement: LU-118204
 Measurement: LU-118205
 Measurement: LU-118206

Air performance measured as per: ISO 5801, Installation category A, without protection against accidental contact.

Suction-side noise levels: LwA as per ISO 13347, LpA measured at 1m distance to fan axis.

The values given are valid under the measuring conditions mentioned and may vary according to the actual installation situation.

With any deviation to the standard set-up, the specific values have to be checked and reviewed once installed or fitted.

For detailed information on the measuring set-up, please contact ebm-papst.

| | n rpm | Pe W | I A (460V) | I A (230V) | LwAin dB(A) |
|----|----------|---------|------------------|------------------|----------------|
| 1 | 1700 | 1909 | 2.4 | 5.7 | 91 |
| 2 | 1700 | 2329 | 3.0 | 6.9 | 86 |
| 3 | 1700 | 2700 | 3.3 | 7.2 | 82 |
| 4 | 1700 | 2382 | 2.7 | 7.0 | 81 |
| 5 | 1400 | 1065 | 1.3 | 3.2 | 87 |
| 6 | 1400 | 1294 | 1.6 | 3.8 | 82 |
| 7 | 1400 | 1436 | 1.8 | 4.2 | 78 |
| 8 | 1400 | 1323 | 1.4 | 3.9 | 77 |
| 9 | 1100 | 516 | 0.7 | 1.5 | 82 |
| 10 | 1100 | 628 | 0.9 | 1.8 | 77 |
| 11 | 1100 | 697 | 0.9 | 2.0 | 73 |
| 12 | 1100 | 642 | 0.8 | 1.9 | 72 |
| 13 | 800 | 199 | 0.4 | 0.6 | 75 |
| 14 | 800 | 241 | 0.5 | 0.7 | 70 |
| 15 | 800 | 268 | 0.5 | 0.8 | 66 |
| 16 | 800 | 247 | 0.5 | 0.7 | 65 |

