



Chipsmall Limited consists of a professional team with an average of over 10 year of expertise in the distribution of electronic components. Based in Hongkong, we have already established firm and mutual-benefit business relationships with customers from,Europe,America and south Asia,supplying obsolete and hard-to-find components to meet their specific needs.

With the principle of “Quality Parts,Customers Priority,Honest Operation,and Considerate Service”,our business mainly focus on the distribution of electronic components. Line cards we deal with include Microchip,ALPS,ROHM,Xilinx,Pulse,ON,Everlight and Freescale. Main products comprise IC,Modules,Potentiometer,IC Socket,Relay,Connector.Our parts cover such applications as commercial,industrial, and automotives areas.

We are looking forward to setting up business relationship with you and hope to provide you with the best service and solution. Let us make a better world for our industry!



## Contact us

Tel: +86-755-8981 8866 Fax: +86-755-8427 6832

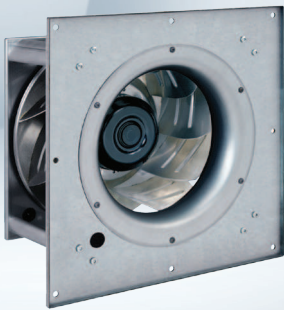
Email & Skype: info@chipsmall.com Web: www.chipsmall.com

Address: A1208, Overseas Decoration Building, #122 Zhenhua RD., Futian, Shenzhen, China



# EC centrifugal fans

backward curved, single inlet, Ø 560



## Highlights:

- 9-blade fan, 3-phase fan motor
- 10 VDC max. output/10 mA, 20 VDC max. output/50 mA, 0-10 V slave output, 24 V external program input, 0-10 VDC / PWM control input, 0-10V or 4-20 mA sensor input, external release input
- Integrated PID controller, control interface with SELV potential safely disconnected from the mains, RS485 MODBUS RTU technology
- Over-temperature protected electronics / motor, operation and alarm display, alarm relay
- Soft start, PFC passive, line undervoltage / phase failure detection

**Material:** Impeller: Aluminum sheet  
 Rotor: Coated in black  
 Electronic housing: Die-cast aluminum  
 Assembly: Galvanized steel with aluminum posts

Mounting position: Shaft horizontal or rotor on bottom; rotor on top on request

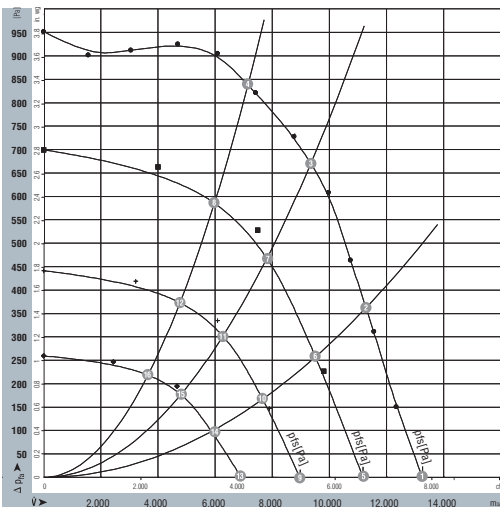
Condensate discharge holes: Rotor-side

## Nominal Data

Type	RadiPac	Motor	Air flow		Frequency	Power input (1)	Speed (1)	Current draw (1)	Temperature range (1)	Mass	Ingress protection rating	Electrical wiring diagram	UL
			CFM	VAC									
R3G560-AH29-66F	EG1R-240-560-30	M3G150-IF	7,775	200...240	50/60	3,000	1,520	8.5	-25...45	65	IP54	A	Yes
R3G560-AH23-65F	EG1R-480-560-30	M3G150-IF	7,775	380...480	50/60	3,000	1,520	4.0	-25...60	65	IP54	A	Yes

(1) Nominal data at maximum load.

## Curves



Measurement: LU-118570  
 Measurement: LU-120955  
 Measurement: LU-120956  
 Measurement: LU-120957

Air performance measured as per: ISO 5801, Installation category A, without protection against accidental contact.

Suction-side noise levels: LWA as per ISO 13347, LpA measured at 1m distance to fan axis.

The values given are valid under the measuring conditions mentioned and may vary according to the actual installation situation.

With any deviation to the standard set-up, the specific values have to be checked and reviewed once installed or fitted.

For detailed information on the measuring set-up, please contact ebm-papst.

	n rpm	Pe W	I A (460V)	I A (230V)	L <sub>WA</sub> in dB(A)
1	1520	2029	2.7	5.8	87
2	1520	2636	3.5	7.8	84
3	1520	3000	4.0	8.5	82
4	1520	2981	4.0	8.0	83
5	1260	1156	1.6	3.3	81
6	1260	1519	2.0	4.4	79
7	1260	1730	2.3	4.9	78
8	1260	1619	2.2	4.6	78
9	1000	617	0.9	1.6	75
10	1000	799	1.1	2.2	73
11	1000	908	1.2	2.4	72
12	1000	839	1.2	2.2	73
13	760	302	0.5	0.7	68
14	760	378	0.6	1.0	69
15	760	423	0.6	1.0	67
16	760	392	0.6	1.0	67



