



Chipsmall Limited consists of a professional team with an average of over 10 year of expertise in the distribution of electronic components. Based in Hongkong, we have already established firm and mutual-benefit business relationships with customers from,Europe,America and south Asia,supplying obsolete and hard-to-find components to meet their specific needs.

With the principle of “Quality Parts,Customers Priority,Honest Operation,and Considerate Service”,our business mainly focus on the distribution of electronic components. Line cards we deal with include Microchip,ALPS,ROHM,Xilinx,Pulse,ON,Everlight and Freescale. Main products comprise IC,Modules,Potentiometer,IC Socket,Relay,Connector.Our parts cover such applications as commercial,industrial, and automotives areas.

We are looking forward to setting up business relationship with you and hope to provide you with the best service and solution. Let us make a better world for our industry!



Contact us

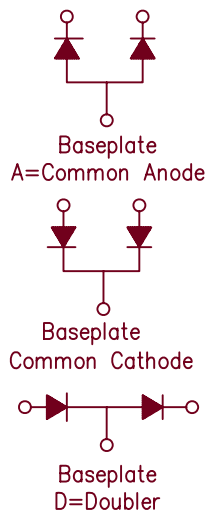
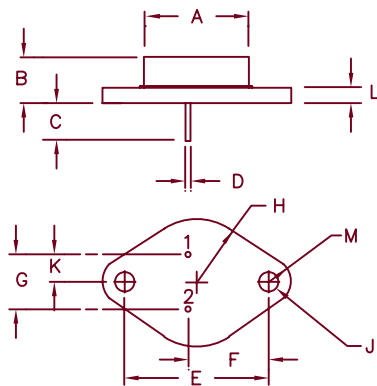
Tel: +86-755-8981 8866 Fax: +86-755-8427 6832

Email & Skype: info@chipsmall.com Web: www.chipsmall.com

Address: A1208, Overseas Decoration Building, #122 Zhenhua RD., Futian, Shenzhen, China



30 Amp Dual Power Rectifiers R702—R716X



Dim.	Inches		Millimeter		Notes
	Minimum	Maximum	Minimum	Maximum	
A	—	.875	—	22.23	Dia.
B	.250	.450	6.35	11.43	
C	.312	—	7.92	—	
D	.038	.043	.97	1.09	Dia.
E	1.177	1.197	29.90	30.40	
F	.655	.675	16.64	17.15	
G	.420	.440	10.67	11.18	
H	—	.525	—	13.34	Rad.
J	.151	.161	3.84	4.09	Dia.
K	.205	.225	5.21	5.72	
L	—	.135	—	3.43	
M	—	.188	—	4.78	Rad.

TO-204AA (TO-3)

Controlled Avalanche	Microsemi Standard	Fast Recovery	Peak Reverse Voltage
R702	R711	R711X	100V
R704	R712	R712X	200V
R706	R714	R714X	400V
	R716	R716X	600V

- Glass Passivated Die
- Hermetic Package
- VRRM 100V to 600V
- 250A Surge Rating
- Available as Common Anode, Common Cathode, or Doubler

Electrical Characteristics

Average forward current per leg	IF(AV) 15 Amps	TC = 100°C
Maximum surge current per leg	IFSM 250 Amps	8.3ms, half sine, TJ = 150°C
Maximum surge current per leg — fast recovery	IFSM 150 Amps	8.3ms, half sine, TJ = 150°C
Max I ² t for fusing	I ² t 260 A ² sec	
Max I ² t for fusing — fast recovery	I ² t 95 A ² sec	
Max peak forward voltage	VFM 1.2 Volts	IFM = 15A: TJ = 25°C*
Max peak forward voltage — fast recovery	VFM 1.4 Volts	IFM = 15A: TJ = 25°C*
Max peak reverse current	IRM 1.0 mA	VRRM, TJ = 25°C
Max peak reverse current — fast recovery	IRM 5.0 mA	VRRM, TJ = 150°C
Max recovery time — fast recovery	trr 200 ns	IF = 1A, IR = 2A, 25°C*

*Pulse test: Pulse width 300 μ sec. Duty cycle 2%

Thermal and Mechanical Characteristics

Storage temperature range	TSTG	–65°C to 150°C
Operating junction temp range	TJ	–65°C to 150°C
Maximum thermal resistance	R θ JC	1.5°C/W
Typical thermal resistance (greased)	R θ CS	0.5°C/W case to sink
Weight		1.0 ounces (25.4 grams) typical



6 Lake Street
Lawrence, MA 01841
PH: (978) 620-2600
FAX: (978) 689-0803
www.microsemi.com

05-01-07 Rev. 1