



Chipsmall Limited consists of a professional team with an average of over 10 year of expertise in the distribution of electronic components. Based in Hongkong, we have already established firm and mutual-benefit business relationships with customers from,Europe,America and south Asia,supplying obsolete and hard-to-find components to meet their specific needs.

With the principle of “Quality Parts,Customers Priority,Honest Operation,and Considerate Service”,our business mainly focus on the distribution of electronic components. Line cards we deal with include Microchip,ALPS,ROHM,Xilinx,Pulse,ON,Everlight and Freescale. Main products comprise IC,Modules,Potentiometer,IC Socket,Relay,Connector.Our parts cover such applications as commercial,industrial, and automotives areas.

We are looking forward to setting up business relationship with you and hope to provide you with the best service and solution. Let us make a better world for our industry!



## Contact us

Tel: +86-755-8981 8866 Fax: +86-755-8427 6832

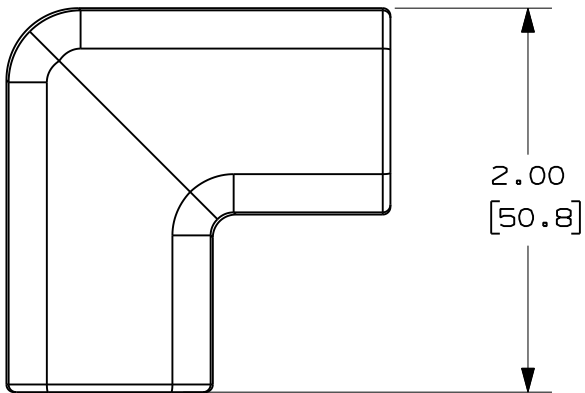
Email & Skype: info@chipsmall.com Web: www.chipsmall.com

Address: A1208, Overseas Decoration Building, #122 Zhenhua RD., Futian, Shenzhen, China



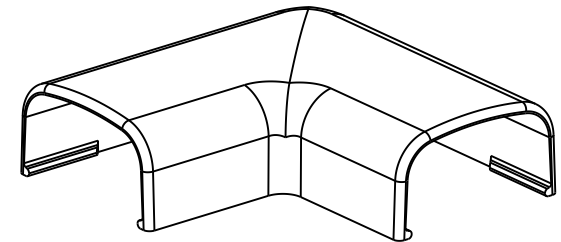
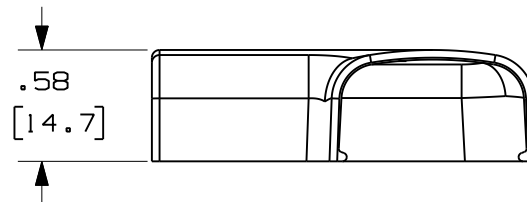
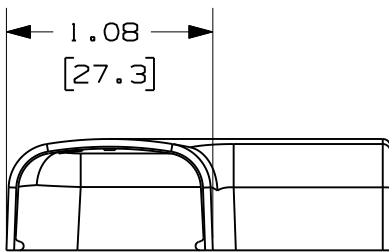
THIS COPY IS PROVIDED ON A RESTRICTED BASIS AND IS NOT TO BE USED IN ANY WAY DETRIMENTAL TO THE INTERESTS OF PANDUIT CORP.

$\triangle B$	PANDUIT P/N	WEIGHT
$\triangle C$	RAF5	1.20 LB/100 PCS. (540g/100 PCS.)



$\triangle D$  NOTES:

1. SEE CURRENT CATALOG FOR ADDITIONAL PART NUMBER SUFFIXES TO INDICATE COLOR AND OR PACKAGE QUANTITY.
2. DIMENSIONS IN PARENTHESIS ARE IN METRIC.



--	-----	--	--	RELEASED TO PRODUCTION	-----	--	--		CAD FILENAME/LAYERS	D34474BA_DC_RAF5/05A.prt			
7	5-30-08	BDK	RMHI	G. REVISED TO CURRENT CAD STANDARDS DRAWING # WAS SS-16865	34474-02	RTFI	RTFI		<b>PANDUIT</b> CORP. TINLEY PARK, ILLINOIS <b>RIGHT ANGLE FITTING</b> <b>(RAF5)</b> <b>CUSTOMER DRAWING</b>				
6	7-8-02	JHNU	RMHI	F. REVISED MATERIAL IN DRAWING TITLE BLOCK.	16865	RGRO	RGRO						
5	8-28-00	MSOH	HIW	E. REVISED AND REDRAWN ON CAD.	16865	HIW	HIW						
4	10-3-91	DW	CF	D. REVISED NOTE AND REMOVED COLOR FROM DRAWING.	16865		CF						
3	2-28-91	DW	CF	C. REVISED COLORS: OMIT BG, LI, LG. ADDED INT. WHITE AND INT. GRAY.	16865		WJB						
2	12-2-87	LDB	WJB	B. ADDED PART NUMBERS RAF5E1 AND RAF5L1.	16865		WJB		UNLESS OTHERWISE SPECIFIED, DIMENSIONAL TOLERANCES ARE: (.X) ± (.XXX) ± (.XX) ± .03 (.8) ANGLES ±	UNLESS OTHERWISE SPECIFIED, ALL DIMENSIONS ARE GIVEN IN INCHES, THIRD ANGLE PROJECTION.			
1	5-14-82	KJS	JK	A. POLYSTYRENE WAS ABS.			JAK		DRAWN BY KJS DATE 9-9-81 CHK'D JK	MAT'L: ABS $\triangle F$ $\triangle G$	SCALE FULL	DRAWING NO. 34474-11	DWG A SIZE
R	9-14-81	KJS	HP	DRAWING RELEASED			HP						
REV	DATE	BY	CHK	DESCRIPTION	ECN	-	R	CUST	SUP				