



Chipsmall Limited consists of a professional team with an average of over 10 year of expertise in the distribution of electronic components. Based in Hongkong, we have already established firm and mutual-benefit business relationships with customers from,Europe,America and south Asia,supplying obsolete and hard-to-find components to meet their specific needs.

With the principle of “Quality Parts,Customers Priority,Honest Operation,and Considerate Service”,our business mainly focus on the distribution of electronic components. Line cards we deal with include Microchip,ALPS,ROHM,Xilinx,Pulse,ON,Everlight and Freescale. Main products comprise IC,Modules,Potentiometer,IC Socket,Relay,Connector.Our parts cover such applications as commercial,industrial, and automotives areas.

We are looking forward to setting up business relationship with you and hope to provide you with the best service and solution. Let us make a better world for our industry!



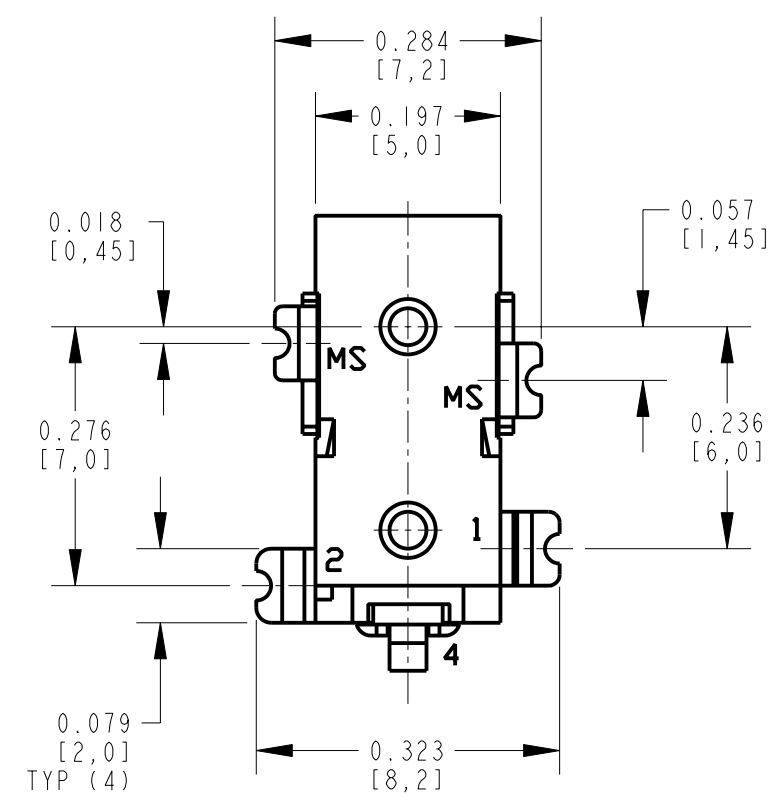
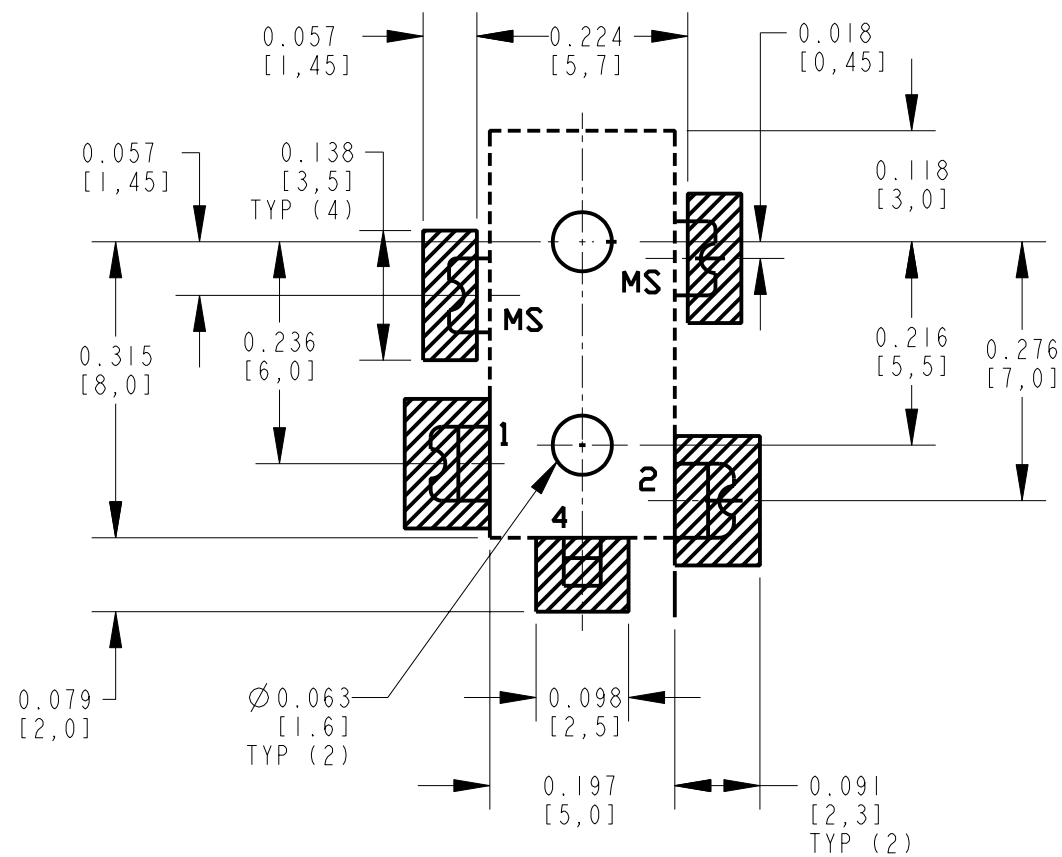
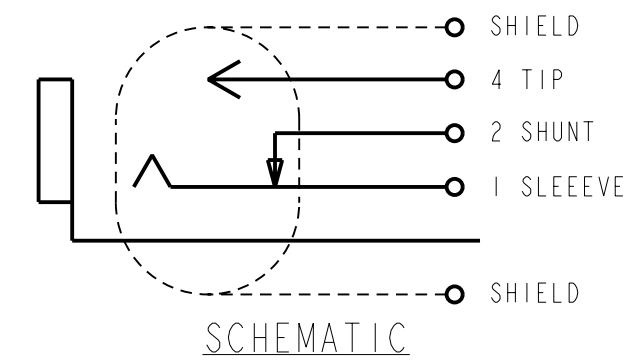
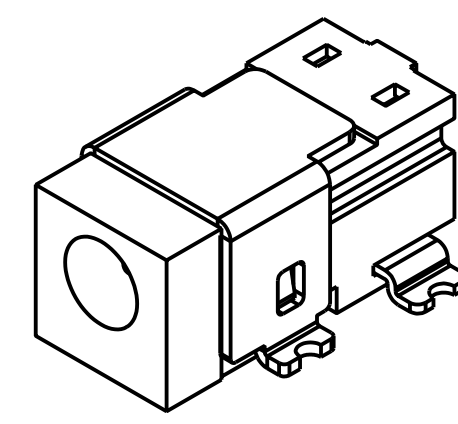
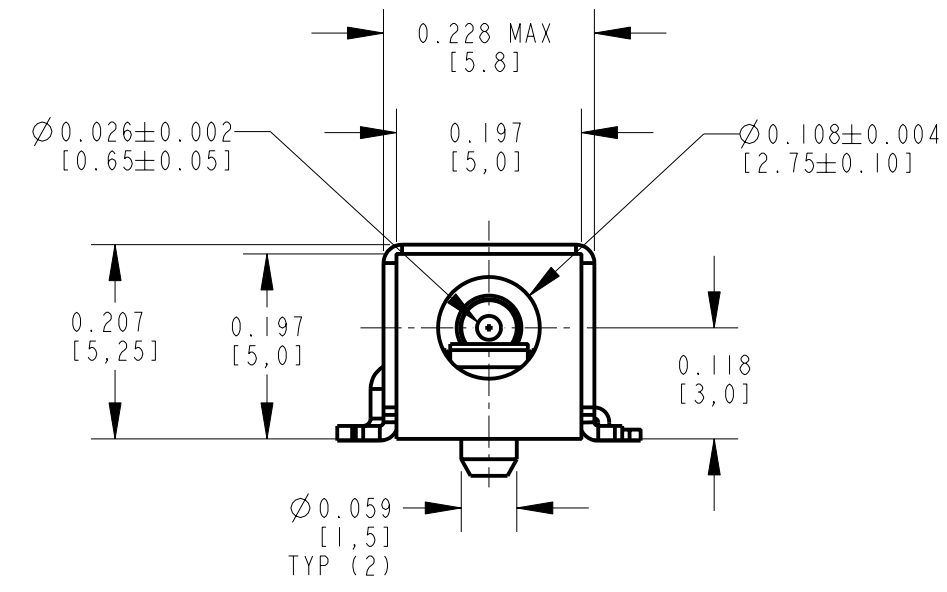
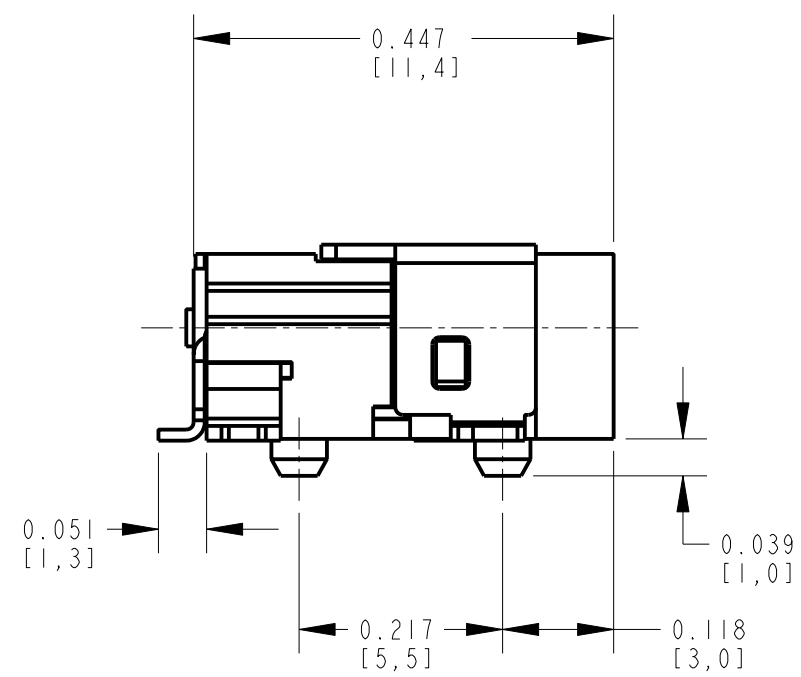
Contact us

Tel: +86-755-8981 8866 Fax: +86-755-8427 6832

Email & Skype: info@chipsmall.com Web: www.chipsmall.com

Address: A1208, Overseas Decoration Building, #122 Zhenhua RD., Futian, Shenzhen, China





NOTES:

1. THIS PRODUCT IS RoHS COMPLIANT
2. ALL DIMENSIONS ARE REFERENCE.
3. MATERIALS:
 - HOUSING: THERMOPLASTIC, BLACK
 - SPRING CONTACT: COPPER ALLOY, SILVER PLATED
 - SHUNT TERMINAL: COPPER ALLOY, SILVER PLATED
 - CENTER PIN: COPPER ALLOY, SILVER PLATED
 - SHIELD: STEEL, NICKEL PLATED

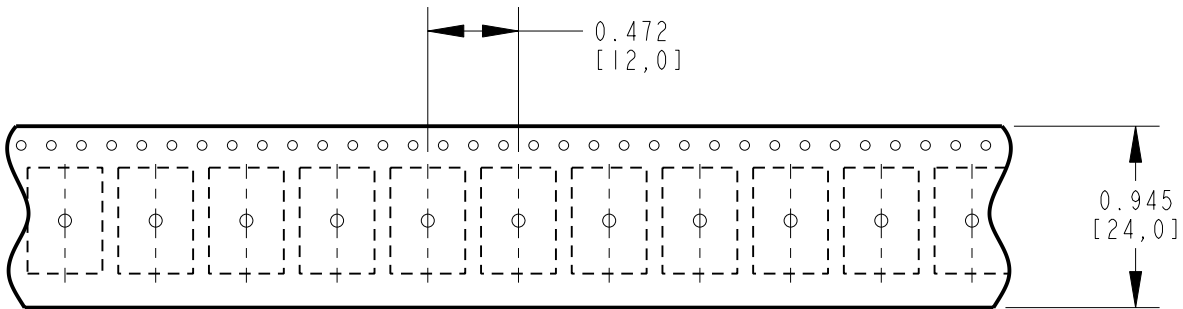
CUSTOMER DRAWING

PC BOARD LAYOUT
COMPONENT SIDE

					<div>★ STAR SYMBOL DENOTES CRITICAL DIMENSION</div>	THIS DRAWING DESCRIBES A DESIGN CONSIDERED PROPRIETARY IN NATURE, DEVELOPED AND MANUFACTURED BY SWITCHCRAFT INC. AND IS RELEASED ON A CONFIDENTIAL BASIS FOR IDENTIFICATION PURPOSES ONLY.										
					UNLESS OTHERWISE SPECIFIED	SIZE	WIDTH		MULT		LBS/M		TEMPER			
					1. ALL DIMENSIONS IN INCHES -TWO PLACE DECIMALS ±0.01 -THREE PLACE DECIMALS ±0.005 -ANGLES ±1° -ALL DIA. CONCENTRIC WITHIN 0.005 T.I.R.	FINISH SPEC No.					MATERIAL SPEC No.					
					2. FEATURES ON THE SAME CENTERLINE MUST BE ALIGNED WITHIN ±0.002	FIRST USED ON				SCALE 5 : 1		<div>Switchcraft®</div>				
					3. REMOVE ALL BURRS	DATE DRAWN	BY	CHKD	APVD							
A	25129	9-8-05	JL	MW		08-Sep-05	JL	MW 9-8-05	MW 9-8-05		SHEET 1 OF 2					
REV	ECO NUMBER	DATE	BY	APVD		NAME RIGHT ANGLE SMT DC JACK SHIELDED, Ø0.65mm PIN, RoHS					PART No. RASM752STRX			REV A		
REVISIONS					DO NOT SCALE DRAWING											

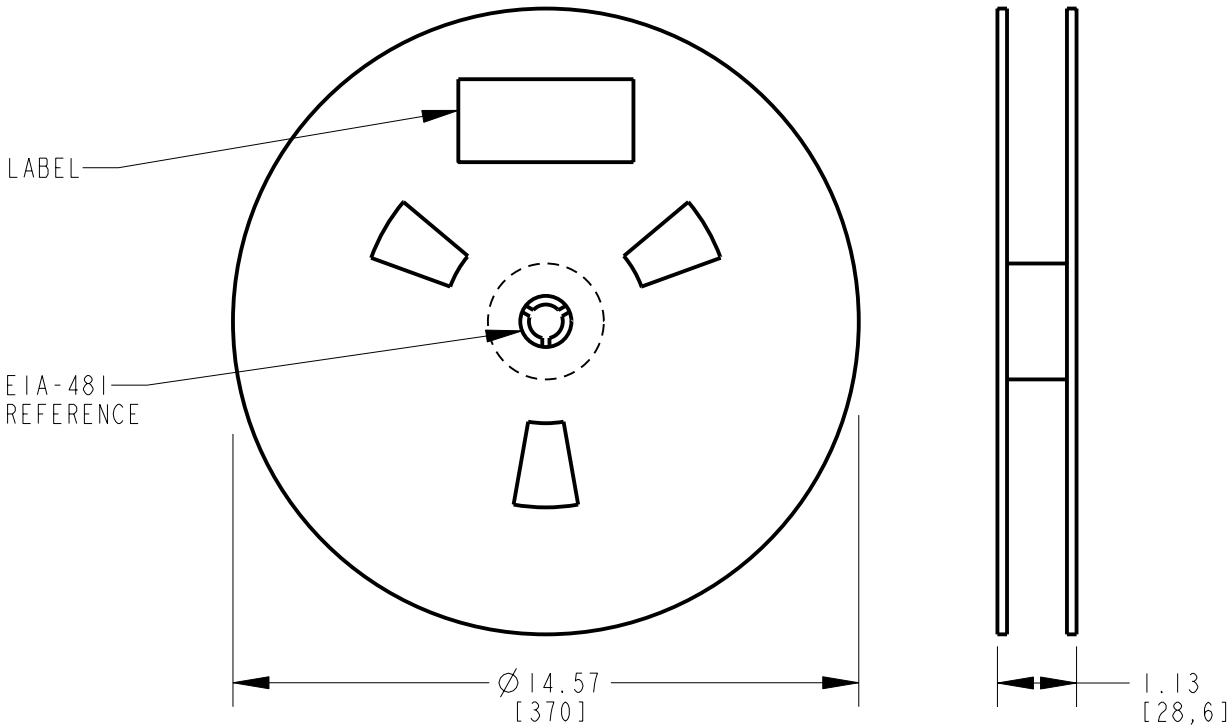
A: CARRIER SIZE

- 1. DETAIL SIZES REFERENCE: EIA-481
- 2. SPECIFICATION: 24 MM X 12 MM
- 3. COVER TAPE: SPECIFICATION ATTACHED (CONDUCTIVE)



B: REEL SIZE

- 1. QUANTITY: 1000 PCS/REEL
- 2. MATERIAL: THERMOPLASTIC



CUSTOMER DRAWING

SCALE	Switchcraft®		
DATE DRAWN			
08-Sep-05	SHEET 2 OF 2		
DRAWN BY	PART No.	REV	
JL	RASM752STRX	A	