



Chipsmall Limited consists of a professional team with an average of over 10 year of expertise in the distribution of electronic components. Based in Hongkong, we have already established firm and mutual-benefit business relationships with customers from,Europe,America and south Asia,supplying obsolete and hard-to-find components to meet their specific needs.

With the principle of “Quality Parts,Customers Priority,Honest Operation,and Considerate Service”,our business mainly focus on the distribution of electronic components. Line cards we deal with include Microchip,ALPS,ROHM,Xilinx,Pulse,ON,Everlight and Freescale. Main products comprise IC,Modules,Potentiometer,IC Socket,Relay,Connector.Our parts cover such applications as commercial,industrial, and automotives areas.

We are looking forward to setting up business relationship with you and hope to provide you with the best service and solution. Let us make a better world for our industry!



## Contact us

Tel: +86-755-8981 8866 Fax: +86-755-8427 6832

Email & Skype: info@chipsmall.com Web: www.chipsmall.com

Address: A1208, Overseas Decoration Building, #122 Zhenhua RD., Futian, Shenzhen, China



**PART NUMBER CODING**

**MATERIAL (INSULATOR/CONTACT)**

- R = BLACK PPS/PHOSPHOR BRONZE**  
OPERATING TEMP: -65°C TO +125°C  
PROCESSING TEMP: 260°C MAX FOR 20 SECONDS
- G = BLACK PA9T/PHOSPHOR BRONZE**  
OPERATING TEMP: -65°C TO +125°C  
PROCESSING TEMP: 260°C MAX FOR 20 SECONDS
- A = BLACK PPS/BERYLLIUM COPPER**  
OPERATING TEMP: -65°C TO +150°C  
PROCESSING TEMP: 260°C MAX FOR 20 SECONDS
- J = BLACK PA9T/BERYLLIUM COPPER**  
OPERATING TEMP: -65°C TO +150°C  
PROCESSING TEMP: 260°C MAX FOR 20 SECONDS

**MOUNTING STYLE**

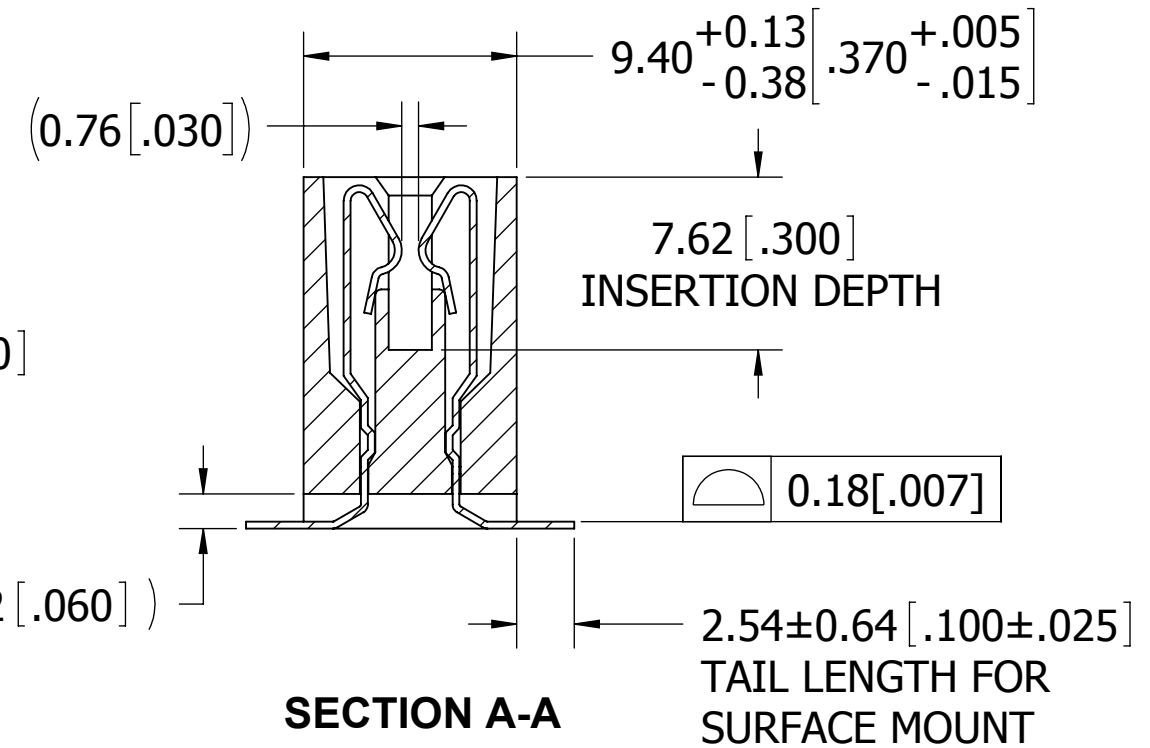
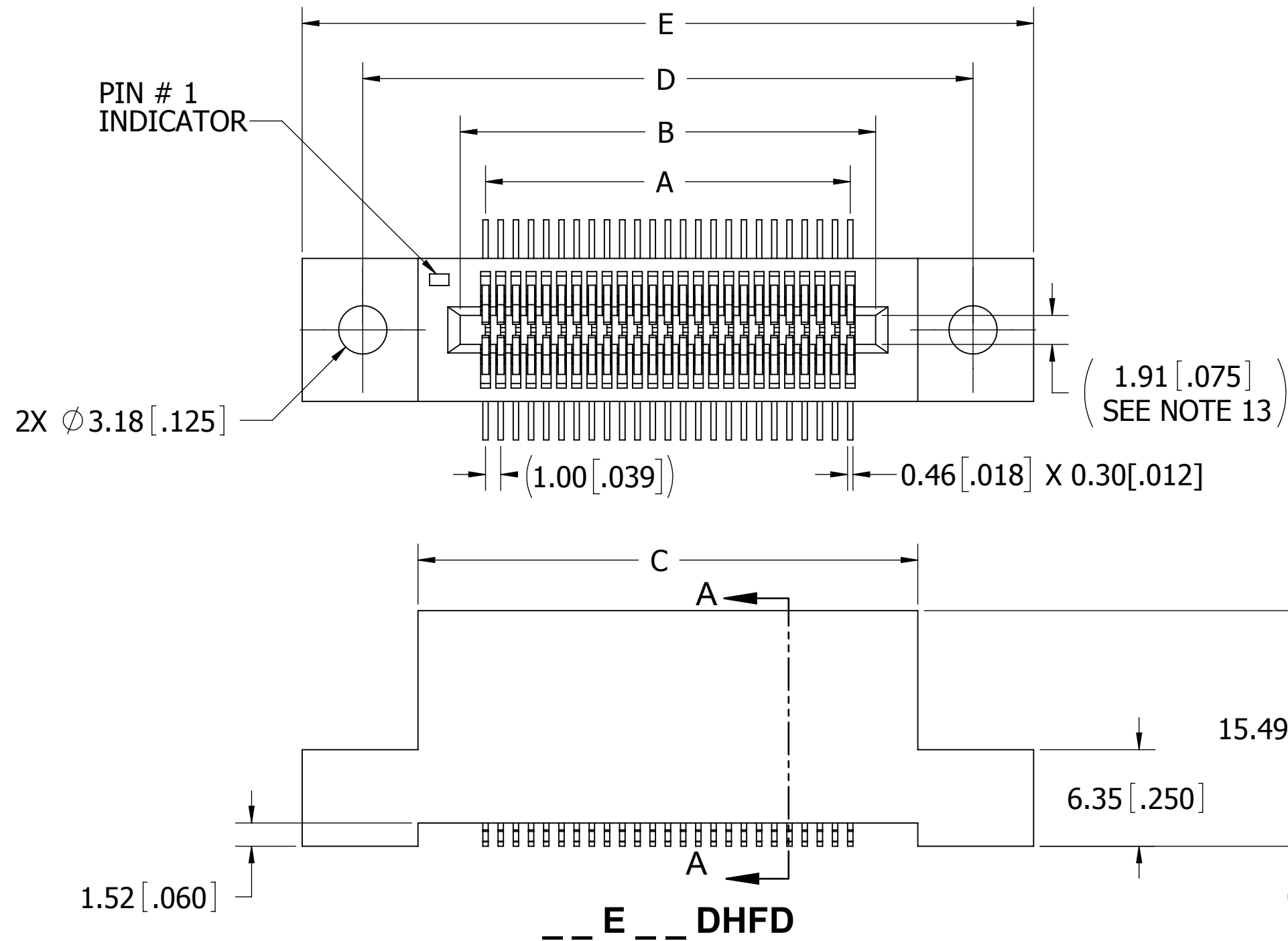
- D = FLUSH MOUNTING
- N = NO MOUNTING EARS
- T = FLUSH MTG. WITH THRD INSERT
- R = BOARD LOCKS

**NUMBER OF POSITIONS  
(CONTACTS PER ROW)**

**PLATING**

- ALL PLATINGS ARE LEAD FREE AND HAVE .000050" NICKEL UNDERPLATE
- |                   |                          |
|-------------------|--------------------------|
| CONTACT SURFACE   | TERMINATION              |
| B = .000010" GOLD | .000100" PURE TIN, MATTE |
| C = .000030" GOLD | .000100" PURE TIN, MATTE |
| N = .000050" GOLD | .000100" PURE TIN, MATTE |

| REVISIONS |         |  |           |    |
|-----------|---------|--|-----------|----|
| REV.      | ECO. NO | DESCRIPTION  | DATE      | BY |
| J         | 3710    | ADD 'N' PLATING, ADD REF TO TAIL HEIGHT DIM 1.52[.060] | 7/12/2017 | JH |



**NOTES:**

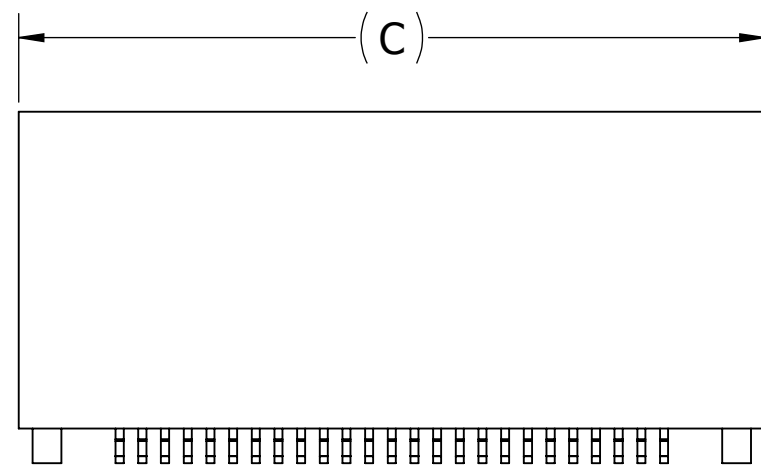
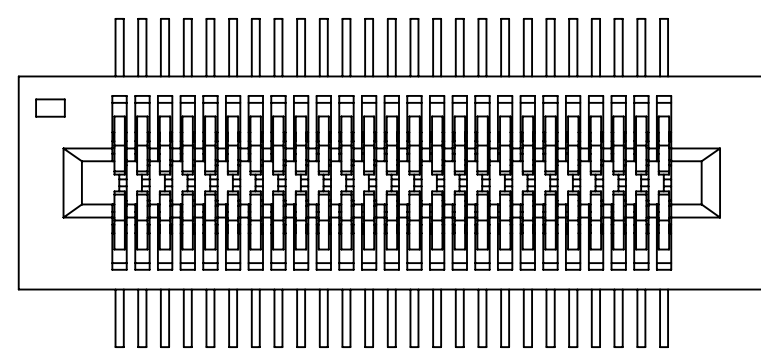
1. INSULATOR MATERIAL: SEE PART NUMBER CODING
2. CONTACT MATERIAL: SEE PART NUMBER CODING
3. PLATING: SEE PART NUMBER CODING
4. OPERATING TEMPERATURE: SEE PART NUMBER CODING
5. PROCESSING TEMP: SEE PART NUMBER CODING
6. UL FLAMMABILITY RATING: 94V-0
7. OPERATING VOLTAGE: 225 VAC
8. CURRENT RATING: 1 AMP
9. CONTACT RESISTANCE: 30 MILLI OHMS MAX
10. INSULATION RESISTANCE: 5000 MEGA OHMS
11. DURABILITY: 500 CYCLES MINIMUM
12. CONNECTOR IDENTIFICATION: THE PART SHALL BE MARKED WITH A PART NUMBER AND LOT CODE
13. BOARD THICKNESS ACCOMMODATED: 1.57 ± 0.20 [.062 ± .008"]
14. INSERTION FORCE: 6 OZ MAX PER CONTACT PAIR WHEN USING A 1.57 [.062"] TEST BLADE
15. WITHDRAWAL FORCE: 1 OZ MIN PER CONTACT PAIR USING 1.57 [.062"] TEST BLADE

**CUSTOMER COPY**

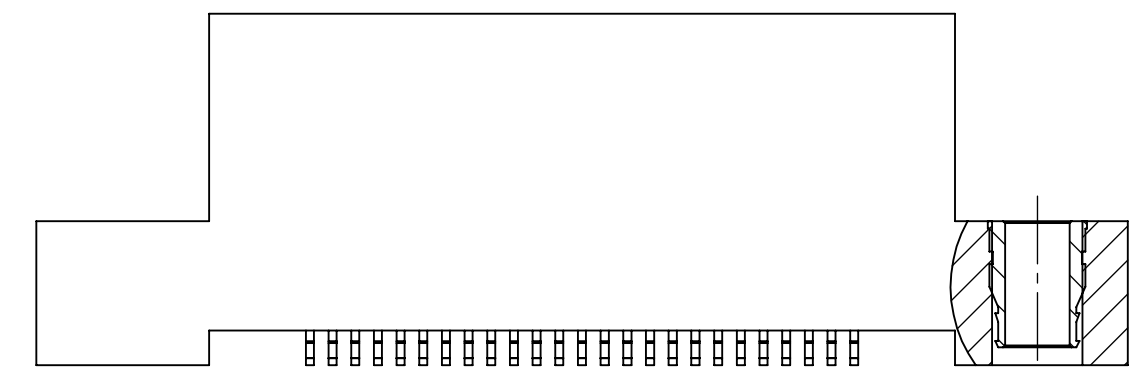
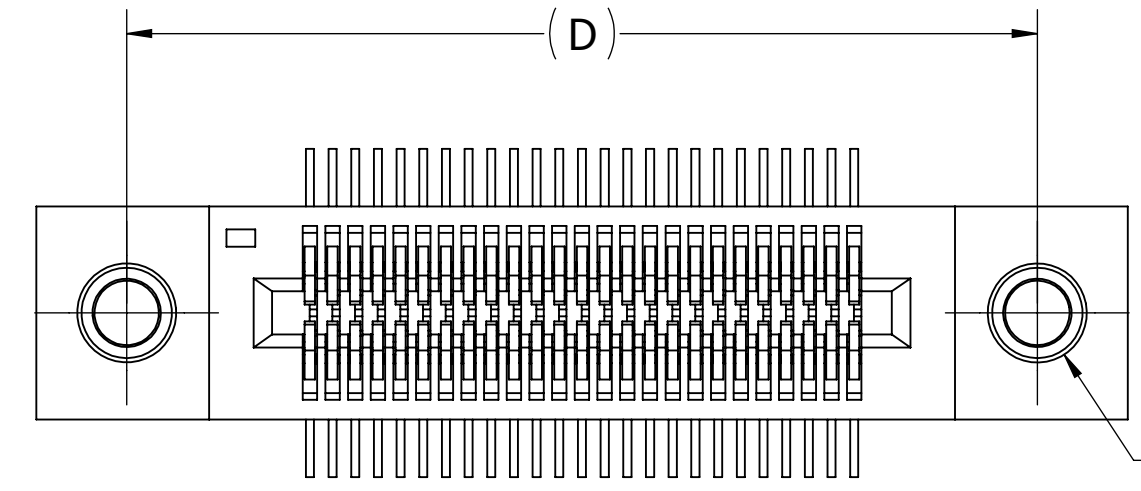


RoHS COMPLIANT

|  |  |            |              |                      |
|--|--|------------|--------------|----------------------|
| UNLESS OTHERWISE SPECIFIED:<br>DIMENSIONS ARE IN MM [INCHES]   | DRAWN  | DATE       | NAME         |                      |
|  |  | 12/19/2005 | HT           |                      |
| <b>TOLERANCES:</b><br>ANGULAR: ± 1°<br><br>DECIMALS<br>.X = ± 0.5 [.02]<br>.XX = ± 0.13 [.005]<br>.XXX = ± 0.013 [.0005] | THE INFORMATION HEREIN CONTAINS PROPRIETARY INFORMATION OF SULLINS ELECTRONICS AND IS NOT TO BE REPRODUCED, USED OR DISCLOSED TO OTHERS FOR ANY PURPOSE EXCEPT AS SPECIFICALLY AUTHORIZED IN WRITING BY AN OFFICER OF SULLINS ELECTRONICS. |            |              | TITLE                |
|  |  |            |              | EDGE CARD, 1mm CC HP |
| PART NUMBER  |  |            |              |                      |
| --- E --- DHF ---  |  |            |              |                      |
| SIZE   | CAGE CODE  | DWG. NO.   | REV          |                      |
| C  | 54453  | C10646     | J            |                      |
| SCALE: 3:1   |  |            | SHEET 1 OF 3 |                      |

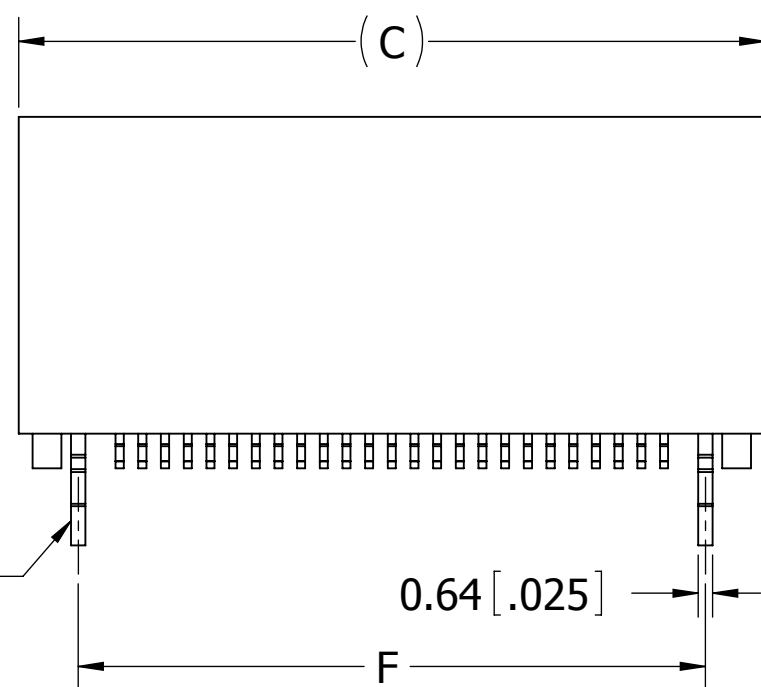
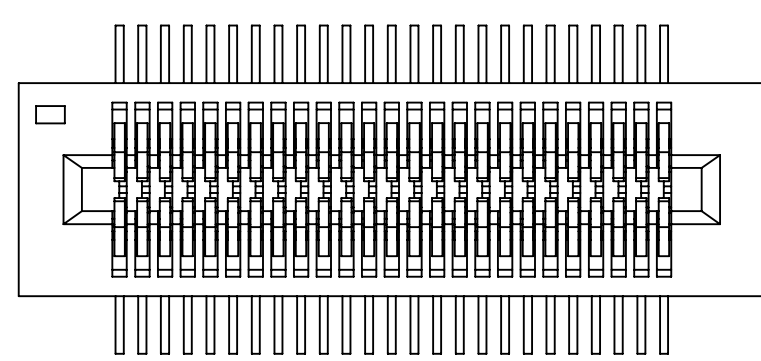


\_\_ E \_\_ DHFN



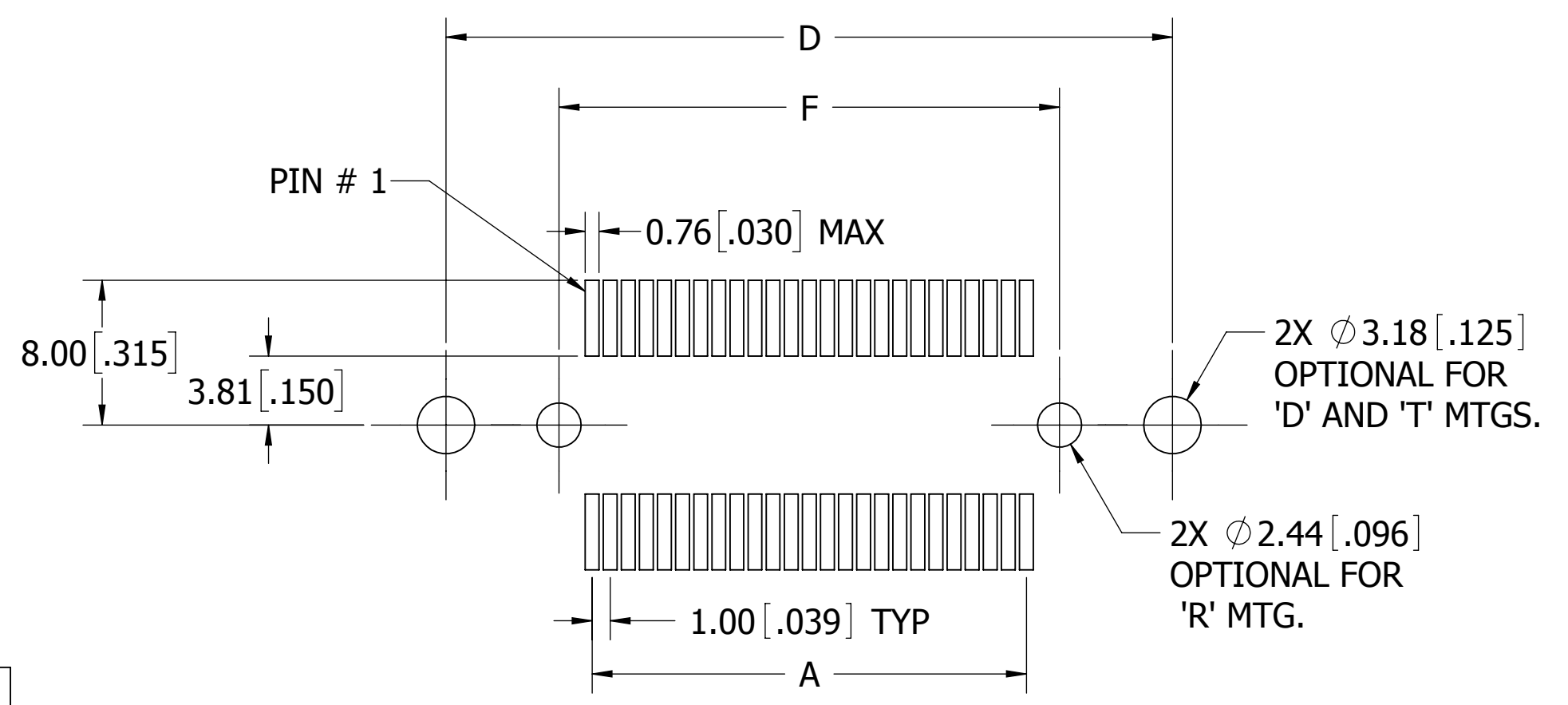
2X # 4-40  
THREADED INSERTS

\_\_ E \_\_ DHFT

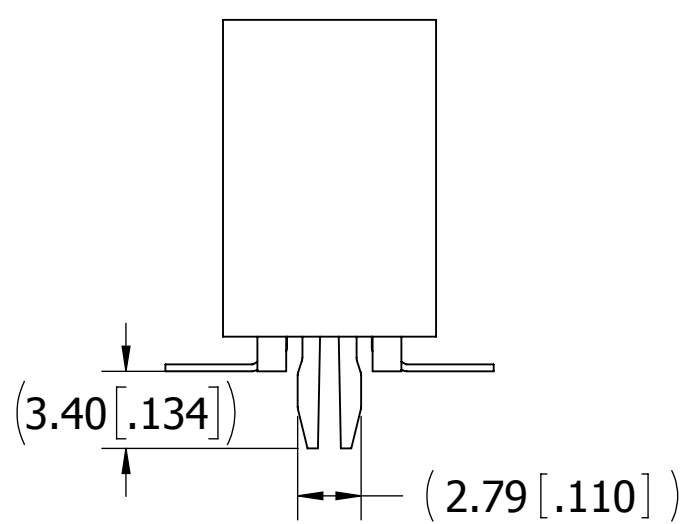


METAL BOARD LOCK

\_\_ E \_\_ DHFR



RECOMMENDED PCB LAYOUT



# CUSTOMER COPY



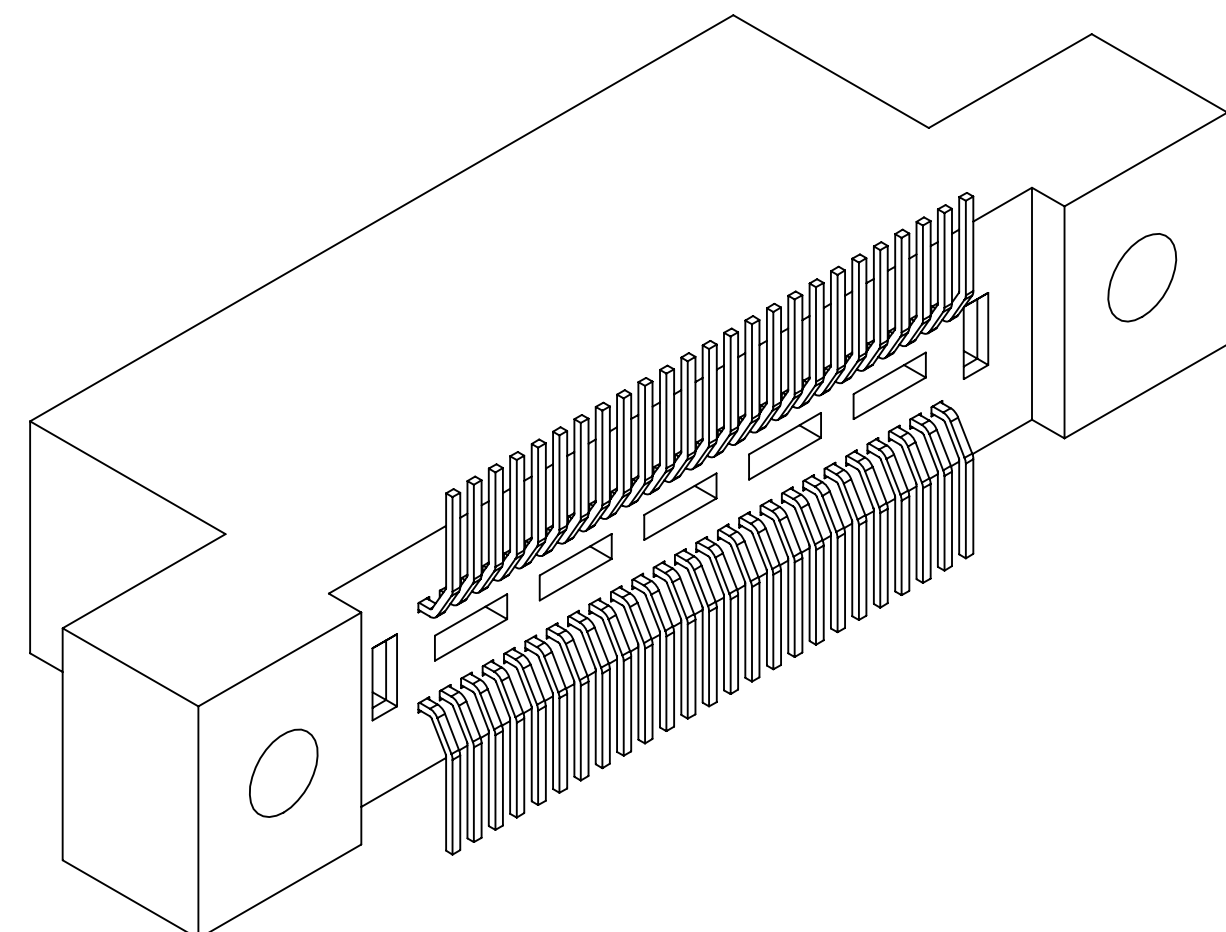
UNLESS OTHERWISE SPECIFIED:  
DIMENSIONS ARE IN MM [INCHES]

TOLERANCES:  
ANGULAR: ± 1°  
DECIMALS  
.X= ±0.5 [.02]  
.XX= ±0.13 [.005]  
.XXX= ±0.013 [.0005]

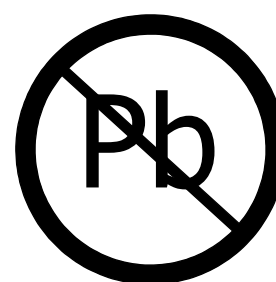
|   |            |      |
|---|------------|------|
| DRAWN   | DATE       | NAME |
|   | 12/19/2005 | HT   |
| <small>THE INFORMATION HEREIN CONTAINS PROPRIETARY INFORMATION OF SULLINS ELECTRONICS AND IS NOT TO BE REPRODUCED, USED OR DISCLOSED TO OTHERS FOR ANY PURPOSE EXCEPT AS SPECIFICALLY AUTHORIZED IN WRITING BY AN OFFICER OF SULLINS ELECTRONICS.</small> |            |      |
|   |            |      |

|             |           |                      |     |
|-------------|-----------|----------------------|-----|
|             |           | TITLE                |     |
|             |           | EDGE CARD, 1mm CC HP |     |
| PART NUMBER |           | __ E __ DHF __       |     |
| SIZE        | CAGE CODE | DWG. NO.             | REV |
| C           | 54453     | C10646               | J   |
| SCALE: 3:1  |           | SHEET 2 OF 3         |     |

| PART NUMBER | POSITIONS/<br>CONTACTS | A±0.13[±.005] |       | B±0.13[±.005] |       | C±0.38[±.015] |       | D±0.25[±.010] |       | E±0.51[±.020] |       | F±0.25[±.010] |       |
|-------------|------------------------|---------------|-------|---------------|-------|---------------|-------|---------------|-------|---------------|-------|---------------|-------|
|             |                        | INCHES        | MM    | INCHES        | MM    | INCHES        | MM    | INCHES        | MM    | INCHES        | MM    | INCHES        | MM    |
| __E02DHF__  | 2/4                    | 0.039         | 1.00  | 0.170         | 4.32  | 0.389         | 9.89  | 0.675         | 17.15 | 0.989         | 25.13 | 0.183         | 4.66  |
| __E03DHF__  | 3/6                    | 0.079         | 2.00  | 0.210         | 5.32  | 0.429         | 10.89 | 0.715         | 18.15 | 1.029         | 26.13 | 0.223         | 5.66  |
| __E04DHF__  | 4/8                    | 0.118         | 3.00  | 0.249         | 6.32  | 0.468         | 11.89 | 0.754         | 19.15 | 1.068         | 27.13 | 0.262         | 6.66  |
| __E05DHF__  | 5/10                   | 0.157         | 4.00  | 0.288         | 7.32  | 0.507         | 12.89 | 0.793         | 20.15 | 1.107         | 28.13 | 0.302         | 7.66  |
| __E06DHF__  | 6/12                   | 0.197         | 5.00  | 0.328         | 8.32  | 0.547         | 13.89 | 0.833         | 21.15 | 1.147         | 29.13 | 0.341         | 8.66  |
| __E07DHF__  | 7/14                   | 0.236         | 6.00  | 0.367         | 9.32  | 0.586         | 14.89 | 0.872         | 22.15 | 1.186         | 30.13 | 0.380         | 9.66  |
| __E08DHF__  | 8/16                   | 0.276         | 7.00  | 0.407         | 10.32 | 0.626         | 15.89 | 0.912         | 23.15 | 1.226         | 31.13 | 0.420         | 10.66 |
| __E09DHF__  | 9/18                   | 0.315         | 8.00  | 0.446         | 11.32 | 0.665         | 16.89 | 0.951         | 24.15 | 1.265         | 32.13 | 0.459         | 11.66 |
| __E10DHF__  | 10/20                  | 0.354         | 9.00  | 0.485         | 12.32 | 0.704         | 17.89 | 0.990         | 25.15 | 1.304         | 33.13 | 0.498         | 12.66 |
| __E11DHF__  | 11/22                  | 0.394         | 10.00 | 0.525         | 13.32 | 0.744         | 18.89 | 1.030         | 26.15 | 1.344         | 34.13 | 0.538         | 13.66 |
| __E12DHF__  | 12/24                  | 0.433         | 11.00 | 0.564         | 14.32 | 0.783         | 19.89 | 1.069         | 27.15 | 1.383         | 35.13 | 0.577         | 14.66 |
| __E13DHF__  | 13/26                  | 0.472         | 12.00 | 0.603         | 15.32 | 0.822         | 20.89 | 1.108         | 28.15 | 1.422         | 36.13 | 0.617         | 15.66 |
| __E14DHF__  | 14/28                  | 0.512         | 13.00 | 0.643         | 16.32 | 0.862         | 21.89 | 1.148         | 29.15 | 1.462         | 37.13 | 0.656         | 16.66 |
| __E15DHF__  | 15/30                  | 0.551         | 14.00 | 0.682         | 17.32 | 0.901         | 22.89 | 1.187         | 30.15 | 1.501         | 38.13 | 0.695         | 17.66 |
| __E16DHF__  | 16/32                  | 0.591         | 15.00 | 0.722         | 18.32 | 0.941         | 23.89 | 1.227         | 31.15 | 1.541         | 39.13 | 0.735         | 18.66 |
| __E17DHF__  | 17/34                  | 0.630         | 16.00 | 0.761         | 19.32 | 0.980         | 24.89 | 1.266         | 32.15 | 1.580         | 40.13 | 0.774         | 19.66 |
| __E18DHF__  | 18/36                  | 0.669         | 17.00 | 0.800         | 20.32 | 1.019         | 25.89 | 1.305         | 33.15 | 1.619         | 41.13 | 0.813         | 20.66 |
| __E19DHF__  | 19/38                  | 0.709         | 18.00 | 0.840         | 21.32 | 1.059         | 26.89 | 1.345         | 34.15 | 1.659         | 42.13 | 0.853         | 21.66 |
| __E20DHF__  | 20/40                  | 0.748         | 19.00 | 0.879         | 22.32 | 1.098         | 27.89 | 1.384         | 35.15 | 1.698         | 43.13 | 0.892         | 22.66 |
| __E21DHF__  | 21/42                  | 0.787         | 20.00 | 0.918         | 23.32 | 1.137         | 28.89 | 1.423         | 36.15 | 1.737         | 44.13 | 0.931         | 23.66 |
| __E22DHF__  | 22/44                  | 0.827         | 21.00 | 0.958         | 24.32 | 1.177         | 29.89 | 1.463         | 37.15 | 1.777         | 45.13 | 0.971         | 24.66 |
| __E23DHF__  | 23/46                  | 0.866         | 22.00 | 0.997         | 25.32 | 1.216         | 30.89 | 1.502         | 38.15 | 1.816         | 46.13 | 1.010         | 25.66 |
| __E24DHF__  | 24/48                  | 0.906         | 23.00 | 1.037         | 26.32 | 1.256         | 31.89 | 1.542         | 39.15 | 1.856         | 47.13 | 1.050         | 26.66 |
| __E25DHF__  | 25/50                  | 0.945         | 24.00 | 1.076         | 27.32 | 1.295         | 32.89 | 1.581         | 40.15 | 1.895         | 48.13 | 1.089         | 27.66 |
| __E26DHF__  | 26/52                  | 0.984         | 25.00 | 1.115         | 28.32 | 1.334         | 33.89 | 1.620         | 41.15 | 1.934         | 49.13 | 1.128         | 28.66 |
| __E27DHF__  | 27/54                  | 1.024         | 26.00 | 1.155         | 29.32 | 1.374         | 34.89 | 1.660         | 42.15 | 1.974         | 50.13 | 1.168         | 29.66 |
| __E28DHF__  | 28/56                  | 1.063         | 27.00 | 1.194         | 30.32 | 1.413         | 35.89 | 1.699         | 43.15 | 2.013         | 51.13 | 1.207         | 30.66 |
| __E29DHF__  | 29/58                  | 1.102         | 28.00 | 1.233         | 31.32 | 1.452         | 36.89 | 1.738         | 44.15 | 2.052         | 52.13 | 1.246         | 31.66 |
| __E30DHF__  | 30/60                  | 1.142         | 29.00 | 1.273         | 32.32 | 1.492         | 37.89 | 1.778         | 45.15 | 2.092         | 53.13 | 1.286         | 32.66 |
| __E31DHF__  | 31/62                  | 1.181         | 30.00 | 1.312         | 33.32 | 1.531         | 38.89 | 1.817         | 46.15 | 2.131         | 54.13 | 1.325         | 33.66 |
| __E32DHF__  | 32/64                  | 1.220         | 31.00 | 1.351         | 34.32 | 1.570         | 39.89 | 1.856         | 47.15 | 2.170         | 55.13 | 1.365         | 34.66 |
| __E33DHF__  | 33/66                  | 1.260         | 32.00 | 1.391         | 35.32 | 1.610         | 40.89 | 1.896         | 48.15 | 2.210         | 56.13 | 1.404         | 35.66 |
| __E34DHF__  | 34/68                  | 1.299         | 33.00 | 1.430         | 36.32 | 1.649         | 41.89 | 1.935         | 49.15 | 2.249         | 57.13 | 1.443         | 36.66 |
| __E35DHF__  | 35/70                  | 1.339         | 34.00 | 1.470         | 37.32 | 1.689         | 42.89 | 1.975         | 50.15 | 2.289         | 58.13 | 1.483         | 37.66 |
| __E36DHF__  | 36/72                  | 1.378         | 35.00 | 1.509         | 38.32 | 1.728         | 43.89 | 2.014         | 51.15 | 2.328         | 59.13 | 1.522         | 38.66 |
| __E37DHF__  | 37/74                  | 1.417         | 36.00 | 1.548         | 39.32 | 1.767         | 44.89 | 2.053         | 52.15 | 2.367         | 60.13 | 1.561         | 39.66 |
| __E38DHF__  | 38/76                  | 1.457         | 37.00 | 1.588         | 40.32 | 1.807         | 45.89 | 2.093         | 53.15 | 2.407         | 61.13 | 1.601         | 40.66 |
| __E39DHF__  | 39/78                  | 1.496         | 38.00 | 1.627         | 41.32 | 1.846         | 46.89 | 2.132         | 54.15 | 2.446         | 62.13 | 1.640         | 41.66 |
| __E40DHF__  | 40/80                  | 1.535         | 39.00 | 1.666         | 42.32 | 1.885         | 47.89 | 2.171         | 55.15 | 2.485         | 63.13 | 1.680         | 42.66 |
| __E41DHF__  | 41/82                  | 1.575         | 40.00 | 1.706         | 43.32 | 1.925         | 48.89 | 2.211         | 56.15 | 2.525         | 64.13 | 1.719         | 43.66 |
| __E42DHF__  | 42/84                  | 1.614         | 41.00 | 1.745         | 44.32 | 1.964         | 49.89 | 2.250         | 57.15 | 2.564         | 65.13 | 1.758         | 44.66 |
| __E43DHF__  | 43/86                  | 1.654         | 42.00 | 1.785         | 45.32 | 2.004         | 50.89 | 2.290         | 58.15 | 2.604         | 66.13 | 1.798         | 45.66 |
| __E44DHF__  | 44/88                  | 1.693         | 43.00 | 1.824         | 46.32 | 2.043         | 51.89 | 2.329         | 59.15 | 2.643         | 67.13 | 1.837         | 46.66 |
| __E45DHF__  | 45/90                  | 1.732         | 44.00 | 1.863         | 47.32 | 2.082         | 52.89 | 2.368         | 60.15 | 2.682         | 68.13 | 1.876         | 47.66 |
| __E46DHF__  | 46/92                  | 1.772         | 45.00 | 1.903         | 48.32 | 2.122         | 53.89 | 2.408         | 61.15 | 2.722         | 69.13 | 1.916         | 48.66 |
| __E47DHF__  | 47/94                  | 1.811         | 46.00 | 1.942         | 49.32 | 2.161         | 54.89 | 2.447         | 62.15 | 2.761         | 70.13 | 1.955         | 49.66 |
| __E48DHF__  | 48/96                  | 1.850         | 47.00 | 1.981         | 50.32 | 2.200         | 55.89 | 2.486         | 63.15 | 2.800         | 71.13 | 1.994         | 50.66 |
| __E49DHF__  | 49/98                  | 1.890         | 48.00 | 2.021         | 51.32 | 2.240         | 56.89 | 2.526         | 64.15 | 2.840         | 72.13 | 2.034         | 51.66 |
| __E50DHF__  | 50/100                 | 1.929         | 49.00 | 2.060         | 52.32 | 2.279         | 57.89 | 2.565         | 65.15 | 2.879         | 73.13 | 2.073         | 52.66 |



# CUSTOMER COPY



RoHS COMPLIANT

UNLESS OTHERWISE SPECIFIED:  
DIMENSIONS ARE IN MM (INCHES)

TOLERANCES:

ANGULAR: ± 1°

DECIMALS

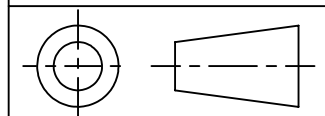
.X= ±0.5 [.02]

.XX= ±0.13 [.005]

.XXX= ±0.013 [.0005]

|       |            |      |
|-------|------------|------|
| DRAWN | DATE       | NAME |
|       | 12/19/2005 | HT   |

THE INFORMATION HEREIN CONTAINS  
PROPRIETARY INFORMATION OF  
SULLINS ELECTRONICS AND IS NOT  
TO BE REPRODUCED, USED OR  
DISCLOSED TO OTHERS FOR ANY  
PURPOSE EXCEPT AS SPECIFICALLY  
AUTHORIZED IN WRITING BY AN  
OFFICER OF SULLINS ELECTRONICS.



TITLE  
EDGE CARD, 1mm CC HP

PART NUMBER  
\_\_ E \_\_ DHF \_\_

|      |           |          |     |
|------|-----------|----------|-----|
| SIZE | CAGE CODE | DWG. NO. | REV |
| C    | 54453     | C10646   | J   |

SCALE: 3:1 SHEET 3 OF 3