



Chipsmall Limited consists of a professional team with an average of over 10 year of expertise in the distribution of electronic components. Based in Hongkong, we have already established firm and mutual-benefit business relationships with customers from,Europe,America and south Asia,supplying obsolete and hard-to-find components to meet their specific needs.

With the principle of "Quality Parts,Customers Priority,Honest Operation,and Considerate Service",our business mainly focus on the distribution of electronic components. Line cards we deal with include Microchip,ALPS,ROHM,Xilinx,Pulse,ON,Everlight and Freescale. Main products comprise IC,Modules,Potentiometer,IC Socket,Relay,Connector.Our parts cover such applications as commercial,industrial, and automotives areas.

We are looking forward to setting up business relationship with you and hope to provide you with the best service and solution. Let us make a better world for our industry!



## Contact us

Tel: +86-755-8981 8866 Fax: +86-755-8427 6832

Email & Skype: info@chipsmall.com Web: www.chipsmall.com

Address: A1208, Overseas Decoration Building, #122 Zhenhua RD., Futian, Shenzhen, China

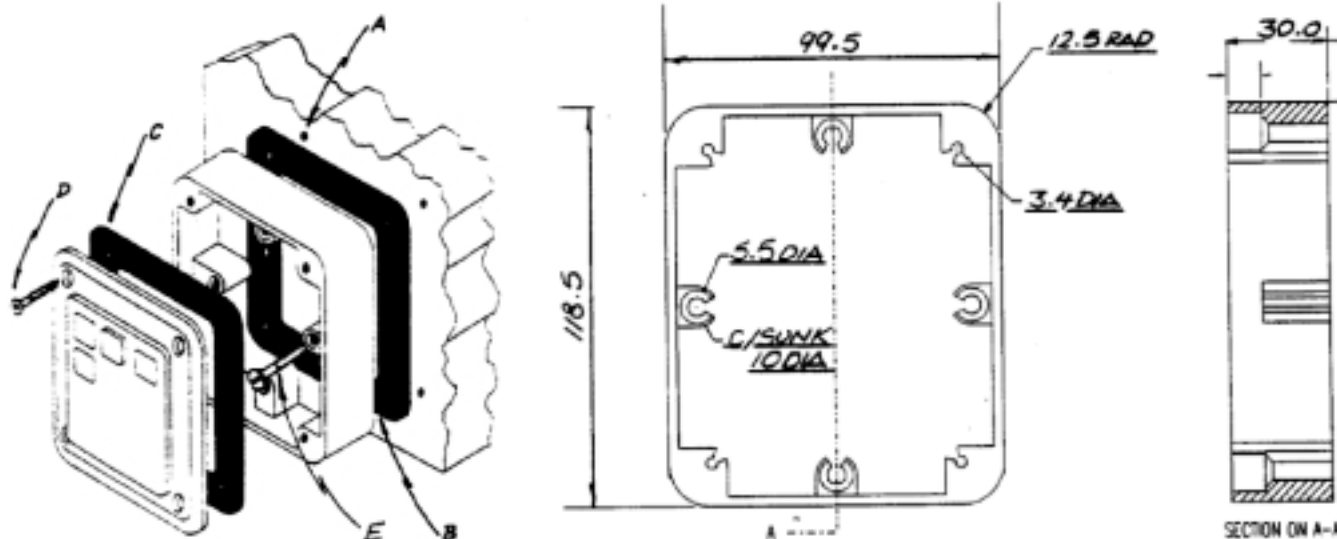




## REAR CASE FOR 1000 SERIES KEYPAD

A tough weather resistant housing for mounting the Storm 1000 and 2000 Series 12 way keypads to a wall or surface. The rear casing provides space behind the keypad for the location of cables, encoding electronics or other components. Alternatively the Rear Case can be set into a wall or surface to enable flush mounting of the Storm 12 way keypad.

### OVERALL DIMENSIONS



### FIXING INSTRUCTIONS

(Please read carefully before installation)

1. Select a suitable location with a sound, flat surface. Using the case as a template, mark the position of the four fixing holes (A) on the surface.
2. Drill and plug the fixing holes to suit fixing screws (E) as supplied (No. 10 x 50mm Counter-sunk).
3. Locate the thicker 6mm thick sealing gasket (B) on the rear face of the case before positioning the case over the fixing holes (A).

4. Secure the case to the surface using suitable fixing screws.

#### Keypad to casing

5. Locate the thinner sealing gasket (C) supplied with the keypad on the rear face of the Storm keypad before positioning the keypad over the case.
6. Fix the keypad to the case using the thread forming security screws (D) as supplied. Please note a special bit is supplied for tightening these screws.
7. Check the installation to ensure gaskets are in place and compressed evenly around the perimeter of the case.

### Notes :-

On rough or uneven surfaces it may be necessary to apply a bead of silicone sealant around the inner face of the case at the point where it meets the mounting surface.

Where this method of sealing is necessary the thicker sealing gasket (B) should not be fitted.

All screws and fixing should be suitably plated or protected against corrosion.

### ENVIRONMENTAL

**Water/Dust Resistance** IP67/NEMA4 when mounted to a flat, non-porous surface

**Impact Resistance** 20 Joules via 50mm dia. Steel impactor (when keypad fitted and casing mounted to surface)

**Operational Temperature** -40° to +100°C (dry)

### MATERIALS

**Case Structure** Extruded Aluminium  
**Finish** Black Epoxy Powder coat  
**Security Screws** A2 Stainless steel Torx No. 8 self-tap  
**Sealing Gaskets** EPDM

### ORDERING DETAILS

**Rear Case** RC12020[x]

100-00-23 Issue 1 Jan 2003



Whilst every effort is made to ensure details are correct at time of print, specifications are subject to change without notice.



FM39602

usa office:  
**storm data entry technology**  
 suite 202  
 364 pennsylvania avenue  
 glen ellyn IL 60137 USA  
 tel: (630) 469 2981  
 fax: (630) 469 2975  
 email: sales.usa@storm-keypads.com  
 website: www.storm-keypads.com

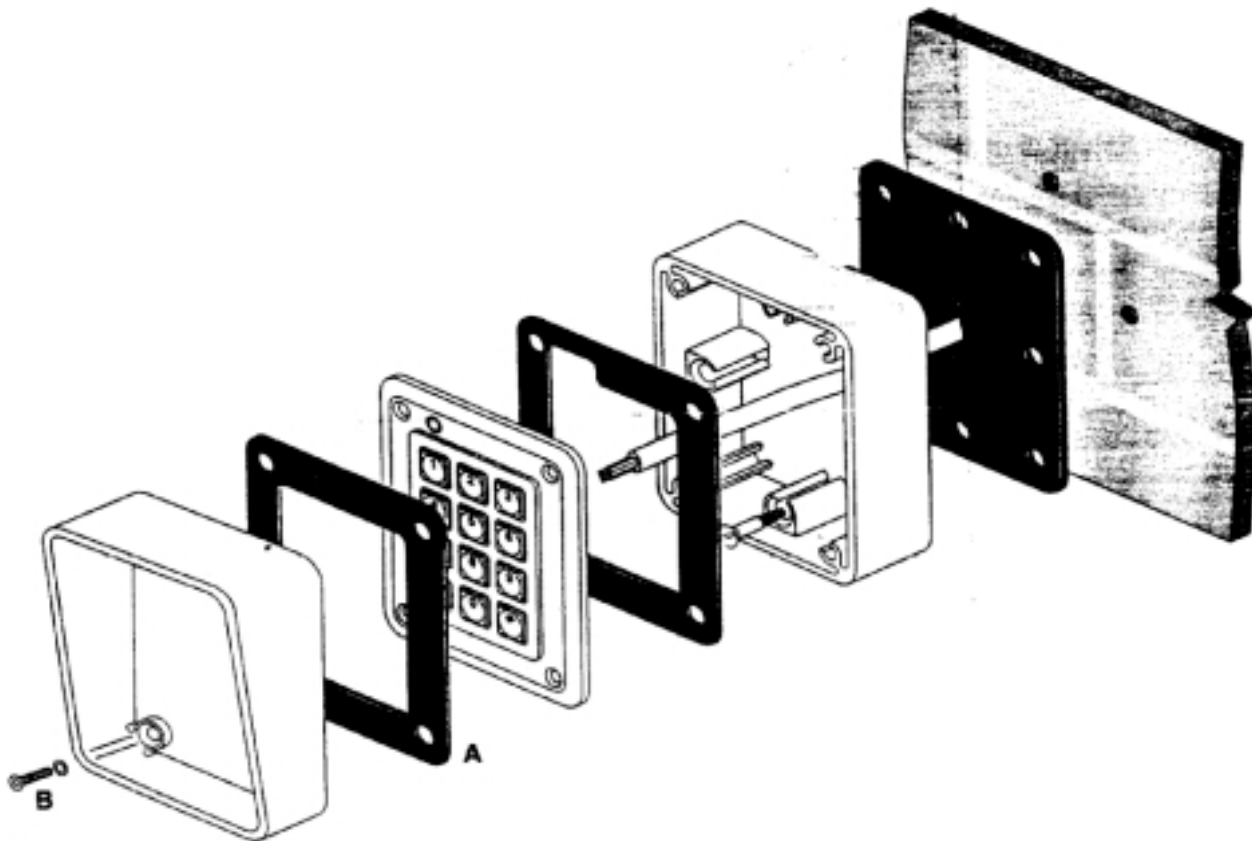
uk office:  
**keymat technology ltd**  
 14 bentinck court  
 bentinck road  
 west drayton  
 middlesex UB7 7rq  
 tel: +44 (0)1895 431421  
 fax: +44 (0)1895 431132  
 email: sales@keymat.com  
 website: www.keymat.com

Storm is a trademark of Keymat Technology Ltd



## PRIVACY SHROUD FOR STORM K RANGE AND AXS KEYPADS

Front mounted Privacy Shroud for use with Storm K Range and AXS keypads. The Privacy Shroud provides added security for financial transactions, access control or other applications where the PIN or Entry Code should be protected against observation or surveillance. To achieve higher level PIN Code security when using Storm AXS Strikemaster keypads the "hidden entry code" feature can also be utilised. The Privacy Shroud locates onto the four keypad fixing positions making installation quick and easy..



### FIXING INSTRUCTIONS

(Please read carefully before installation)

1. Secure the self adhesive sealing gasket (A) to the front surface of the Storm keypad. Please take care to ensure that the knock-out for the LED is removed, where appropriate.

2. Locate the Privacy Shroud to the front surface of the keypad and secure using the four security fixings (B).

**Important :** ensure that the nylon sealing washer is located beneath the head of the security screw (B). A security bit is supplied for tightening these screws.

### Important Note :-

#### For retrospective installations.

Please ensure that the security fixings (currently locating the keypad into position) are removed before applying the sealing gasket)

#### For new installations

Where the Privacy Shroud is to be used in conjunction with the wall mounted keypad and rear case, follow the installation instructions supplied with the keypad or rear case, however, do not fit the security screws until the Privacy Shroud is in position.

### MATERIALS

Case Structure	Extruded Aluminium
Finish	Black Epoxy Powder coat
Security Screws	A2 Stainless steel Torx No. 8 self-tap
Sealing Gaskets	Self-Adhesive EPDM

### ORDERING DETAILS

Privacy Shroud 1KFS020[X]

SEC-FS-INS-01 Issue 1 Jan 2003



Whilst every effort is made to ensure details are correct at time of print, specifications are subject to change without notice.



FM39602

usa office:  
storm data entry technology  
suite 202  
364 pennsylvania avenue  
glen ellyn IL 60137 USA  
tel: (630) 469 2981  
fax: (630) 469 2975  
email: sales.usa@storm-keypads.com  
website: www.storm-keypads.com

uk office:  
keymat technology ltd  
14 bentinck court  
bentinck road  
west drayton  
middlesex UB7 7RQ  
tel: +44 (0)1895 431421  
fax: +44 (0)1895 431132  
email: sales@keymat.com  
website: www.keymat.com

Storm is a trademark of Keymat Technology Ltd