



Chipsmall Limited consists of a professional team with an average of over 10 year of expertise in the distribution of electronic components. Based in Hongkong, we have already established firm and mutual-benefit business relationships with customers from,Europe,America and south Asia,supplying obsolete and hard-to-find components to meet their specific needs.

With the principle of “Quality Parts,Customers Priority,Honest Operation,and Considerate Service”,our business mainly focus on the distribution of electronic components. Line cards we deal with include Microchip,ALPS,ROHM,Xilinx,Pulse,ON,Everlight and Freescale. Main products comprise IC,Modules,Potentiometer,IC Socket,Relay,Connector.Our parts cover such applications as commercial,industrial, and automotives areas.

We are looking forward to setting up business relationship with you and hope to provide you with the best service and solution. Let us make a better world for our industry!



Contact us

Tel: +86-755-8981 8866 Fax: +86-755-8427 6832

Email & Skype: info@chipsmall.com Web: www.chipsmall.com

Address: A1208, Overseas Decoration Building, #122 Zhenhua RD., Futian, Shenzhen, China



REVISION L

TABLE 1			
PART NUMBER	"A" REF	"B"	
RCE-01-X-02.00-XX	2000 [78.74]	2003 [78.86]	
RCE-01-X-03.00-XX	3000 [118.11]	3003 [118.23]	
RCE-01-X-05.00-XX	5000 [196.85]	5003 [196.97]	

DESIGNED & DIMENSIONED
IN MILLIMETERS [INCHES]

RCE-XX-X-XX.XX-XX

CABLE STYLE
-01: OUTDOOR UL

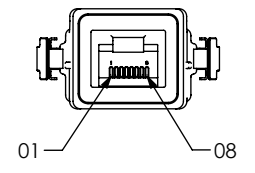
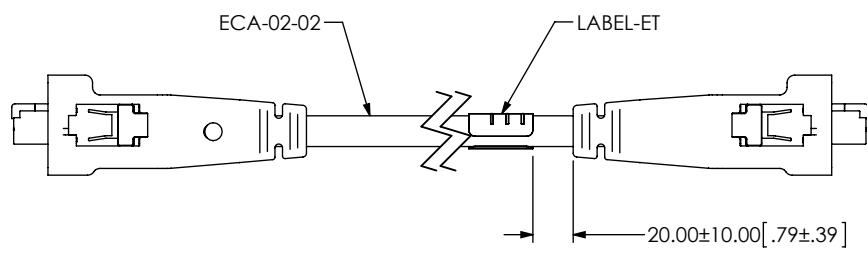
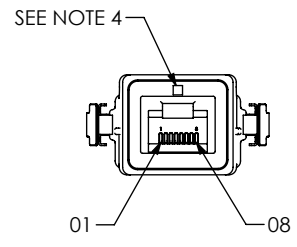
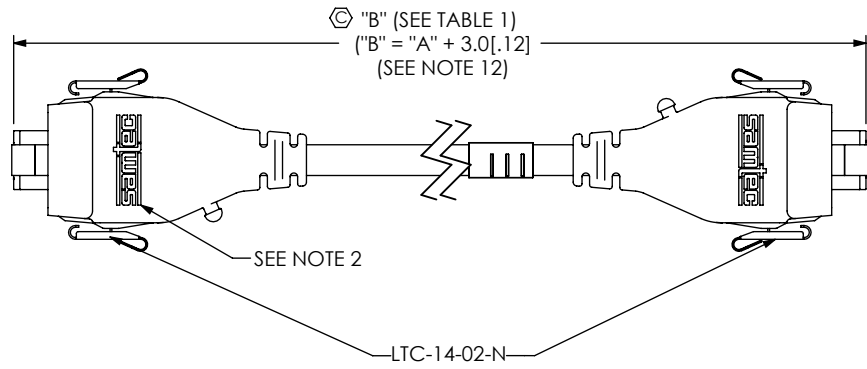
END OPTION
-D: DOUBLE ENDED
(BOTH ENDS SEALED)
-BC: BLUNT CUT
(ONE END SEALED)

PLATING SPECIFICATION
-G: .000050" GOLD ON
CONTACT AREAS,
NICKEL ON SHELLS

CABLE LENGTH*
-XX.XX: "A" (SEE TABLE 1)
(0.25 M [9.842] MIN-50.00M [1968.504] MAX)

* -02.00, -03.00 AND -05.00 ARE CATALOG
STANDARD LENGTHS, FOR OTHER
LENGTHS CONTACT SAMTEC

FIG 1
(RCE-01-G-XX.XX-D SHOWN)



DO NOT
SCALE FROM
THIS PRINT

- NOTES:
- ⊕ REPRESENTS A CRITICAL DIMENSION.
 - SAMTEC LOGO TO APPEAR ON SURFACE AS SHOWN, APPROXIMATELY 17.6[.69] X 5.3[.21]
 - DELETED
 - ALL MULTIPLE CAVITY MOLDS SHALL IDENTIFY EACH CAVITY WITH A NUMBER DESIGNATION LOCATED WHERE SHOWN.
 - ALL IDENTIFICATION MARKS SHALL NOT STAND GREATER THAN 0.05[.002] OFF THE SURFACE OF THE PART.
 - ⊕ MOLD TO BE INSERTED TO ACCEPT DIFFERENT CABLE DIAMETERS.
 - ASSEMBLY TO BE 100% ELECTRICALLY TESTED TO CAT5CH USING FLUKE DTX-1800 CABLE ANALYZER.
 - ALL EJECTION PIN AND GATE LOCATIONS MUST BE APPROVED BY SAMTEC PRODUCT ENGINEERING.
 - ⊕ ANY ADDITIONAL VOIDING AND/OR MODIFICATIONS TO VOIDING MUST BE APPROVED BY SAMTEC PRODUCT ENGINEERING.
 - ALL DRAFT MUST BE WITHIN THE SPECIFIED TOLERANCES.
 - ALL INSIDE/OUTSIDE RADII 0.13[.005] MAX UNLESS OTHERWISE STATED.
 - TOLERANCE SHALL BE ± 2% FOR ALL LENGTHS.
 - MINIMUM LATCH PUSH OUT FORCE: 2.2N[.50LB].
 - ASSEMBLY TO BE BULK PACKAGED WITH ASBBLT4X5.5 ON EACH END PER PACKAGING STANDARD CO-RF-WI-3001-M.
 - POSITION DRAIN WIRE ON TOP SIDE AS SHOWN.
 - NOTE DELETED.
 - TAKE MEASUREMENT AT THE CORNER OF THE SHROUD.

F:\DWG\MISC\MKTG\RCE-XX-X-XX.XX-MKT.SLDDRW

UNLESS OTHERWISE SPECIFIED,
DIMENSIONS ARE IN MILLIMETERS.
TOLERANCES ARE:
DECIMALS ANGLES
X.X: ±0.3 [.01] 2°
X.XX: ±0.13 [.005]
X.XXX: ±0.051 [.0020]

PROPRIETARY NOTE
THIS DOCUMENT CONTAINS INFORMATION
CONFIDENTIAL AND PROPRIETARY TO
SAMTEC, INC. AND SHALL NOT BE REPRODUCED
OR TRANSFERRED TO OTHER DOCUMENTS OR
DISCLOSED TO OTHERS OR USED FOR ANY
PURPOSE OTHER THAN THAT WHICH IT WAS
OBTAINED WITHOUT THE EXPRESSED WRITTEN
CONSENT OF SAMTEC, INC.

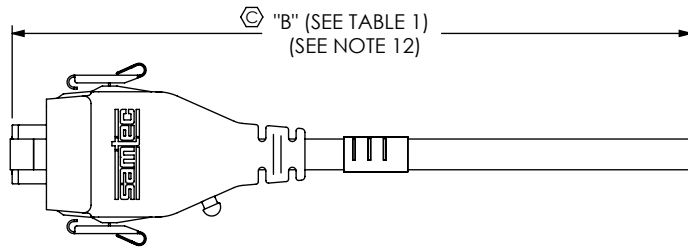
MATERIAL: DO NOT SCALE DRAWING SHEET SCALE: 1:1.5
INSULATOR: POLYCARBONATE
CONTACT: PHOS BRONZE
SHIELD: PHOS BRONZE
PREMOLD: MD-PTC-RF-640-BK
OVERMOLD: MD-NYL-ZY-70G13-BK
LATCH: BeCu



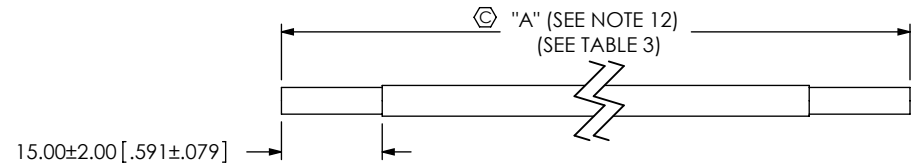
520 PARK EAST BLVD., NEW ALBANY, IN 47150
PHONE: 812-944-6733 FAX: 812-948-5047
e-Mail info@SAMTEC.com code 55322

DESCRIPTION:
SEAL RECTANGULAR CABLE PLUG, ETHERNET
DWG. NO. RCE-XX-X-XX.XX-XX
BY: T NEWTON 01/13/2009 SHEET 1 OF 4

FIG 2
(RCE-01-G-XX.XX-BC SHOWN)
(SAME AS FIG 1, DIFFERENT AS SHOWN)

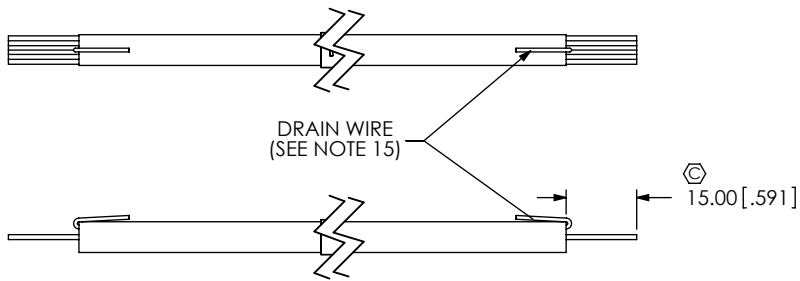


IN-PROCESS 1
(CUT CABLE TO LENGTH AND STRIP OUTER JACKET)

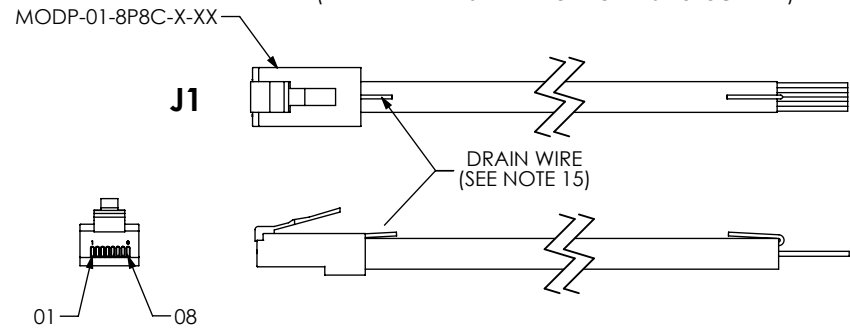


END OPTION	"A"
-D	LENGTH IN MILLIMETERS
-BC	LENGTH IN MILLIMETERS x 2 + 50.01[2.000]

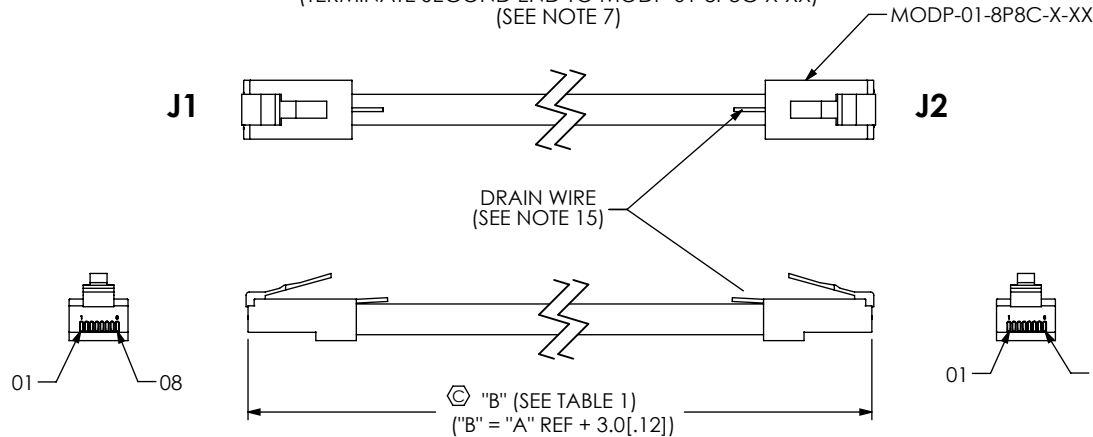
IN-PROCESS 2
(FOLD DRAIN WIRE BACK OVER JACKET)



IN-PROCESS 3
(TERMINATE FIRST END TO MODP-01-8P8C-X-XX)



IN-PROCESS 4
(TERMINATE SECOND END TO MODP-01-8P8C-X-XX)
(SEE NOTE 7)



J1 POS	COLOR	J2 POS
01	WHITE/ORANGE	01
02	ORANGE	02
03	WHITE/GREEN	03
04	BLUE	04
05	WHITE/BLUE	05
06	GREEN	06
07	WHITE/BROWN	07
08	BROWN	08
SHELL	BRAID	SHELL

PROPRIETARY NOTE
THIS DOCUMENT CONTAINS INFORMATION CONFIDENTIAL AND PROPRIETARY TO SAMTEC, INC. AND SHALL NOT BE REPRODUCED OR TRANSFERRED TO OTHER DOCUMENTS OR DISCLOSED TO OTHERS OR USED FOR ANY PURPOSE OTHER THAN THAT WHICH IT WAS OBTAINED WITHOUT THE EXPRESSED WRITTEN CONSENT OF SAMTEC, INC.

DO NOT SCALE DRAWING

SHEET SCALE: 1:1.5



520 PARK EAST BLVD, NEW ALBANY, IN 47150
PHONE: 812-944-6733 FAX: 812-948-5047
e-Mail: info@SAMTEC.com code 55322

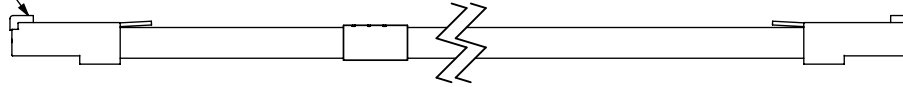
DESCRIPTION:
SEAL RECTANGULAR CABLE PLUG, ETHERNET

DWG. NO.
RCE-XX-X-XX.XX-XX

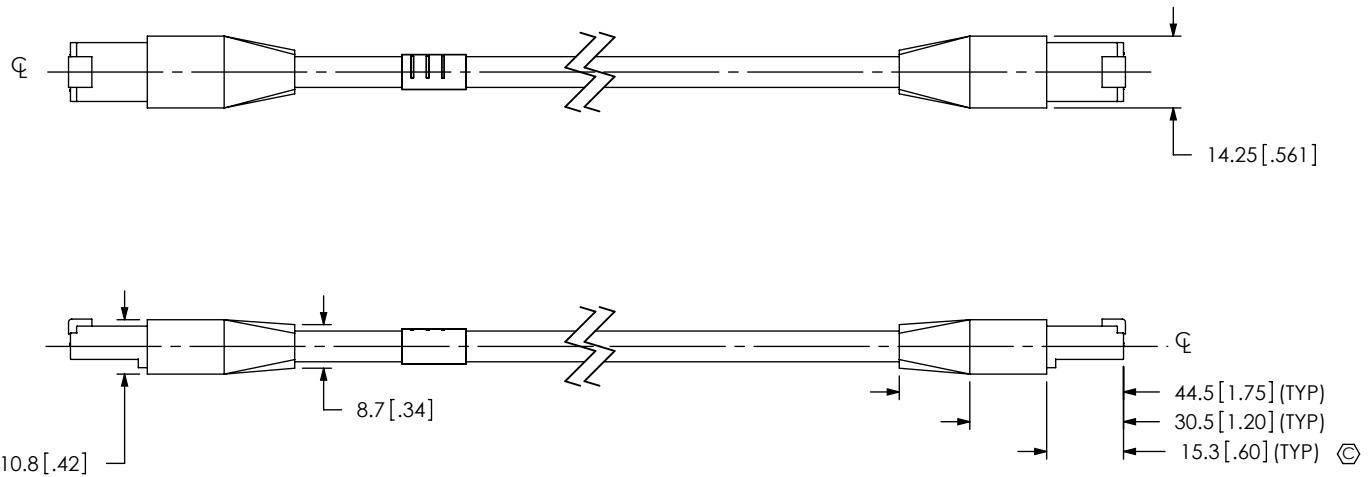
BY: T NEWTON 01/13/2009 SHEET 2 OF 4

IN-PROCESS 5
(REMOVE LATCH ARMS)

BREAK LATCH ARM FREE (2 PLCS)



IN-PROCESS 6
(PREMOLDING)



PROPRIETARY NOTE

THIS DOCUMENT CONTAINS INFORMATION CONFIDENTIAL AND PROPRIETARY TO SAMTEC, INC. AND SHALL NOT BE REPRODUCED OR TRANSFERRED TO OTHER DOCUMENTS OR DISCLOSED TO OTHERS OR USED FOR ANY PURPOSE OTHER THAN THAT WHICH IT WAS OBTAINED WITHOUT THE EXPRESSED WRITTEN CONSENT OF SAMTEC, INC.

DO NOT SCALE DRAWING

SHEET SCALE: 1:1.5

samtec

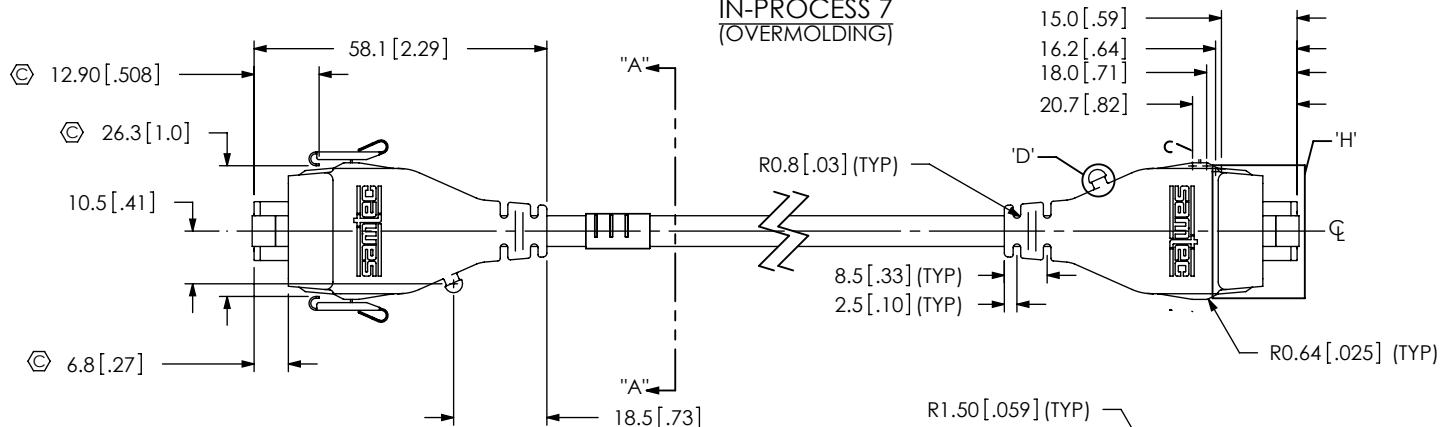
520 PARK EAST BLVD, NEW ALBANY, IN 47150
PHONE: 812-944-6733 FAX: 812-948-5047
e-Mail info@SAMTEC.com code 55322

DESCRIPTION:
SEAL RECTANGULAR CABLE PLUG, ETHERNET

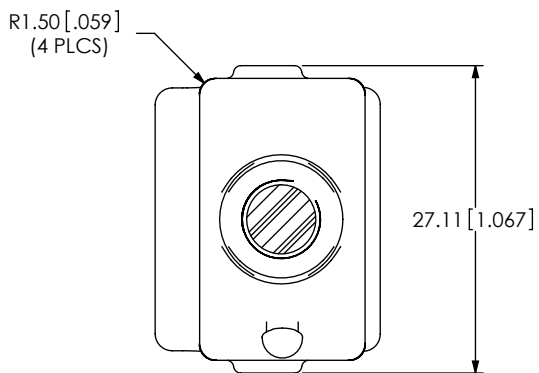
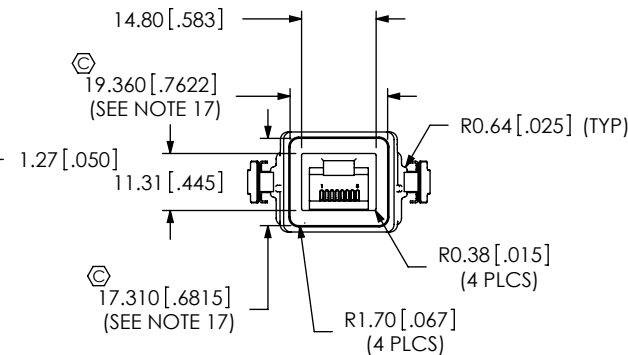
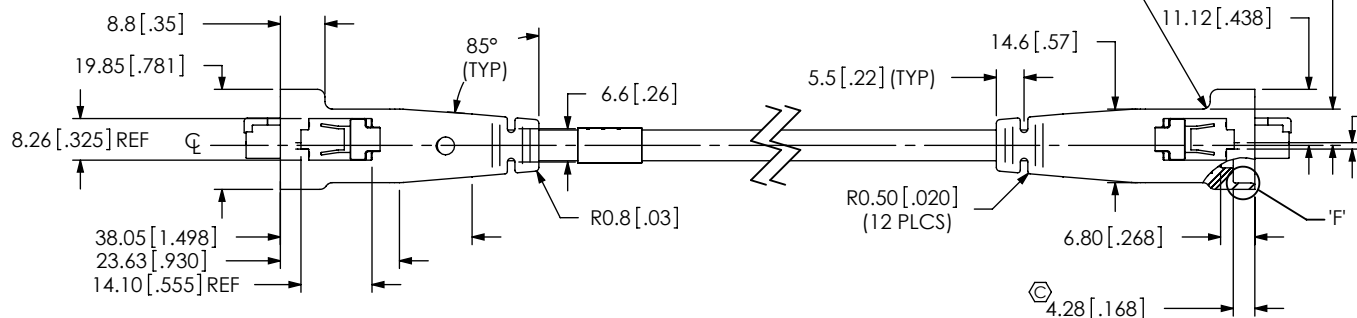
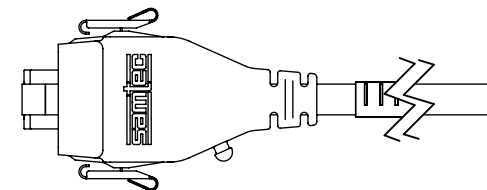
DWG. NO. RCE-XX-X-XX.XX-XX

BY: T NEWTON 01/13/2009 SHEET 3 OF 4

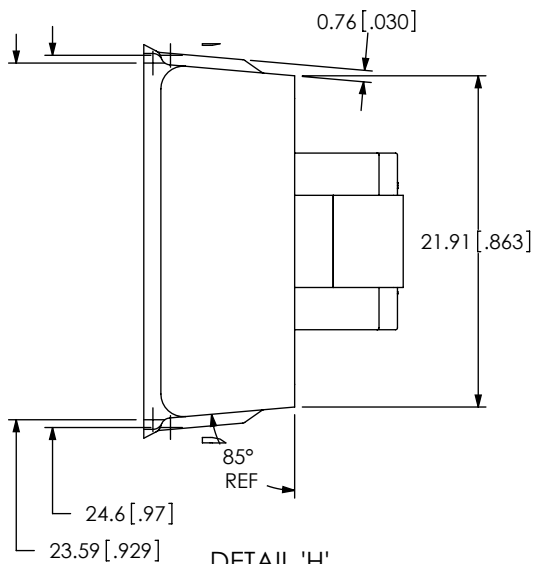
IN-PROCESS 7
(OVERMOLDING)



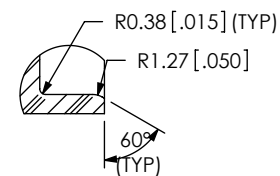
IN-PROCESS 8
(-BC: BLUNT CUT ONLY)
(CUT CABLE IN HALF AND TRIM TO LENGTH)



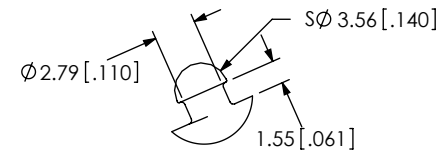
SECTION "A"-"A"
SCALE 1.5 : 1



DETAIL 'H'
SCALE 2 : 1



DETAIL 'F'
SCALE 2 : 1



DETAIL 'D'
SCALE 2 : 1

PROPRIETARY NOTE
THIS DOCUMENT CONTAINS INFORMATION
CONFIDENTIAL AND PROPRIETARY TO
SAMTEC, INC. AND SHALL NOT BE REPRODUCED
OR TRANSFERRED TO OTHER DOCUMENTS OR
DISCLOSED TO OTHERS OR USED FOR ANY
PURPOSE OTHER THAN THAT WHICH IT WAS
OBTAINED WITHOUT THE EXPRESSED WRITTEN
CONSENT OF SAMTEC, INC.

DO NOT SCALE DRAWING

SHEET SCALE: 1:1.5

samtec

520 PARK EAST BLVD, NEW ALBANY, IN 47150
PHONE: 812-944-6733 FAX: 812-948-5047
e-Mail: info@SAMTEC.com code 55322

DESCRIPTION:
SEAL RECTANGULAR CABLE PLUG, ETHERNET

DWG. NO.
RCE-XX-X-XX.XX-XX

BY: T NEWTON 01/13/2009 SHEET 4 OF 4