



Chipsmall Limited consists of a professional team with an average of over 10 year of expertise in the distribution of electronic components. Based in Hongkong, we have already established firm and mutual-benefit business relationships with customers from,Europe,America and south Asia,supplying obsolete and hard-to-find components to meet their specific needs.

With the principle of “Quality Parts,Customers Priority,Honest Operation,and Considerate Service”,our business mainly focus on the distribution of electronic components. Line cards we deal with include Microchip,ALPS,ROHM,Xilinx,Pulse,ON,Everlight and Freescale. Main products comprise IC,Modules,Potentiometer,IC Socket,Relay,Connector.Our parts cover such applications as commercial,industrial, and automotives areas.

We are looking forward to setting up business relationship with you and hope to provide you with the best service and solution. Let us make a better world for our industry!



Contact us

Tel: +86-755-8981 8866 Fax: +86-755-8427 6832

Email & Skype: info@chipsmall.com Web: www.chipsmall.com

Address: A1208, Overseas Decoration Building, #122 Zhenhua RD., Futian, Shenzhen, China





CRYSTEK
MICROWAVE
 A DIVISION OF CRYSTEK CORPORATION

RedBox

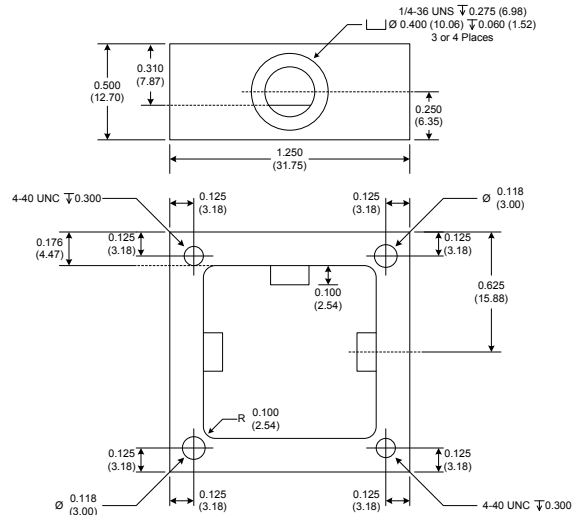
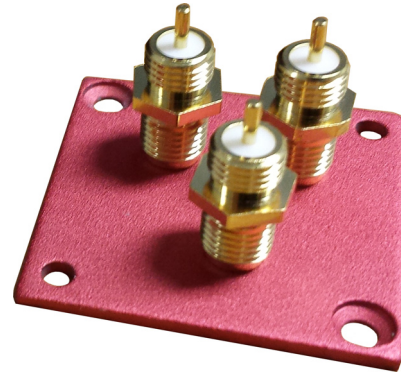
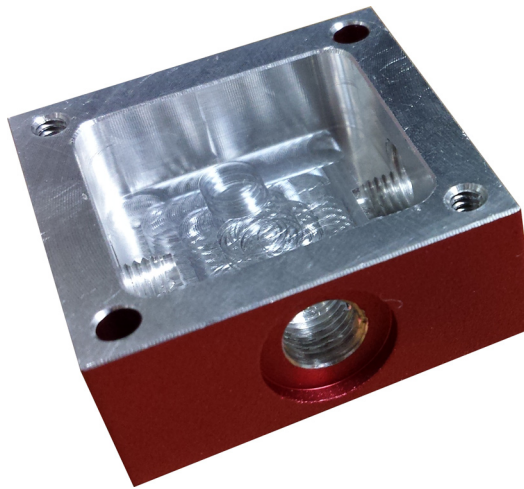
**CONNECTORIZED
 ENCLOSURE**

**ENHANCED DURABILITY AND
 EASY INTEGRATION**

Part Numbers

RedBox-Kit-3 (3 Port)

RedBox-Kit-4 (4 Port)



Notes:

- 1) Material: Alodine Aluminum
- 2) Color: Red Alodine
- 3) Dimensions are post alodined
- 4) Dimensions are Inches (mm)
- 5) Tolerance on all dimensions is within ± 0.005 (0.127)
- 6) Depth of pocket is 0.310 (7.87)
- 7) Option with 4 threaded holes available

Crystek's robust alodined aluminum enclosure is the perfect solution to any small electronic enclosure need. The robust aluminum enclosure (1.25" x 1.25" x 0.59") with SMA connectors allows for implementation into many applications. This enclosure is offered in two styles with three or four SMA connectors provided. The enclosure is drilled and tapped to accept (1/4 x 36 UNA) threaded fittings and accepts a PCB thickness of 0.031" for exact center pin connection.



CRYSTEK
 CORPORATION

12730 COMMONWEALTH DRIVE • FORT MYERS, FL 33913

PHONE: 239-561-3311 • 800-237-3061

FAX: 239-561-1025 • WWW.CRYSTEK.COM