



Chipsmall Limited consists of a professional team with an average of over 10 year of expertise in the distribution of electronic components. Based in Hongkong, we have already established firm and mutual-benefit business relationships with customers from,Europe,America and south Asia,supplying obsolete and hard-to-find components to meet their specific needs.

With the principle of “Quality Parts,Customers Priority,Honest Operation,and Considerate Service”,our business mainly focus on the distribution of electronic components. Line cards we deal with include Microchip,ALPS,ROHM,Xilinx,Pulse,ON,Everlight and Freescale. Main products comprise IC,Modules,Potentiometer,IC Socket,Relay,Connector.Our parts cover such applications as commercial,industrial, and automotives areas.

We are looking forward to setting up business relationship with you and hope to provide you with the best service and solution. Let us make a better world for our industry!



Contact us

Tel: +86-755-8981 8866 Fax: +86-755-8427 6832

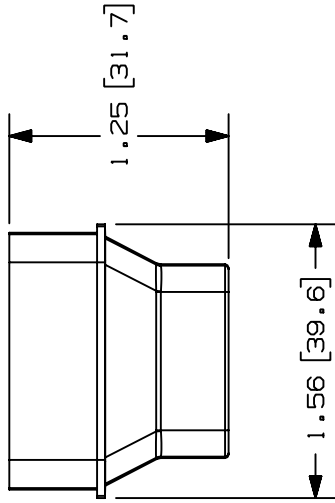
Email & Skype: info@chipsmall.com Web: www.chipsmall.com

Address: A1208, Overseas Decoration Building, #122 Zhenhua RD., Futian, Shenzhen, China

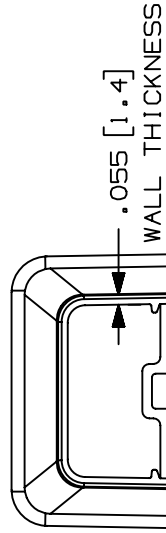
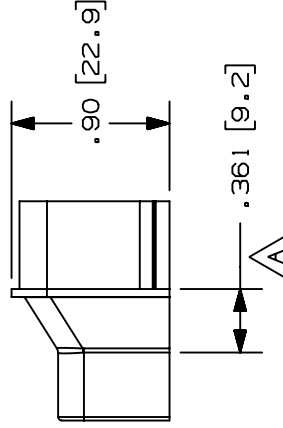
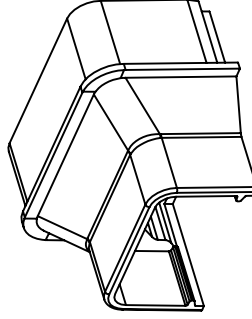


THIS COPY IS PROVIDED ON A RESTRICTED BASIS AND IS NOT TO BE USED IN ANY WAY DETRIMENTAL TO THE INTERESTS OF PANDUIT CORP.

PANDUIT P/N	WEIGHT
RFX105-X	.098 LB/10 PCS. (44.5 G/10 PCS.)



- NOTES:
- SEE CURRENT CATALOG FOR ADDITIONAL PART SUFFIXES TO INDICATE COLOR AND OR PACKAGE QUANTITY.
 - FOR USE IN POWER CABLING APPLICATIONS UP TO 600V OR FOR CATEGORY 5, FIBER OPTIC AND OTHER LOW VOLTAGE APPLICATIONS REQUIRING TAMPER-RESISTANCE.
 - DIMENSIONS IN PARENTHESIS ARE IN METRIC.



CAO FILENAME/LAYERS D35541CZ_RFX105_C_01A.PRT

PANDUIT
REDUCER FITTING (RFX105-X)
CUSTOMER DRAWING

TINLEY PARK, ILLINOIS

UNLESS OTHERWISE SPECIFIED,
DIMENSIONAL TOLERANCES ARE:
(.X) ± .XXX) ± .010(.3)
(.XX) ± .3(.8) ANGLES ±

UNLESS OTHERWISE SPECIFIED,
ALL DIMENSIONS ARE GIVEN
IN INCHES, THIRD ANGLE PROJECTION.

DRAWN BY PM
DATE 10-15-96
CHK'D CEF

SCALE FULL

MAT'L: ABS/
POLYCARBONATE

DRAWING NO.

35541-52

SIZE A

SUP

CUST

R

ECN

DESCRIPTION

RELEASED TO PRODUCTION

A. ADDED DIMENSION .361 (9.2)

B. CORRECTED DRAWING NUMBER MISTAKE
MADE ON REVISION 1

35541-52 CEF

35541-52 HIW

35541-52 HIW

08-11-97 RABO HIW

REV

DATE

BY

CHK