



Chipsmall Limited consists of a professional team with an average of over 10 year of expertise in the distribution of electronic components. Based in Hongkong, we have already established firm and mutual-benefit business relationships with customers from,Europe,America and south Asia,supplying obsolete and hard-to-find components to meet their specific needs.

With the principle of "Quality Parts,Customers Priority,Honest Operation,and Considerate Service",our business mainly focus on the distribution of electronic components. Line cards we deal with include Microchip,ALPS,ROHM,Xilinx,Pulse,ON,Everlight and Freescale. Main products comprise IC,Modules,Potentiometer,IC Socket,Relay,Connector.Our parts cover such applications as commercial,industrial, and automotives areas.

We are looking forward to setting up business relationship with you and hope to provide you with the best service and solution. Let us make a better world for our industry!



Contact us

Tel: +86-755-8981 8866 Fax: +86-755-8427 6832

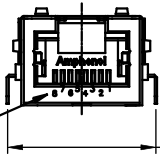
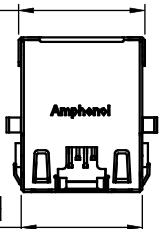
Email & Skype: info@chipsmall.com Web: www.chipsmall.com

Address: A1208, Overseas Decoration Building, #122 Zhenhua RD., Futian, Shenzhen, China



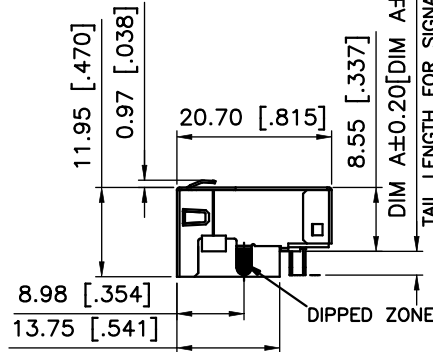
16.90 [.665]

16.20 [.638]



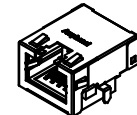
PIN NUMBERS
SHOW FOR REFERENCE
ONLY, IT DOES NOT
SHOW ON ACTUAL PART

19.84 [.781]



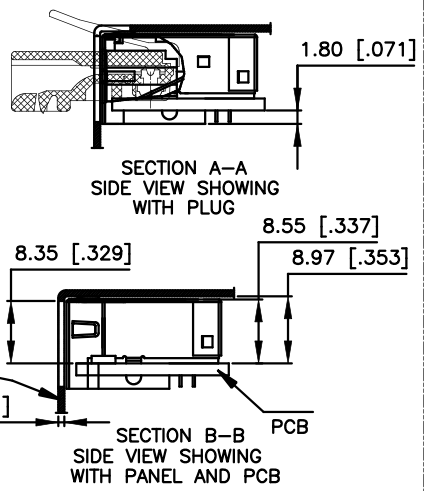
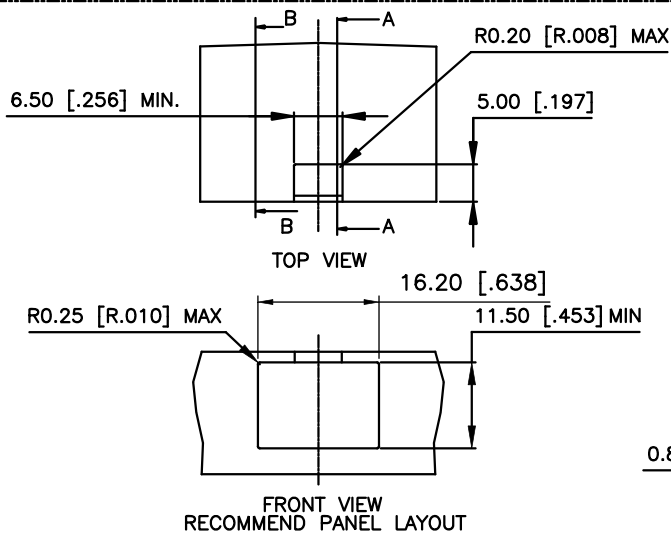
DIM A±0.20[DIM A±.008]
TAIL LENGTH FOR SIGNAL PIN

REVISIONS			
REV	DESCRIPTION, ECN, EAR NO.	DATE	APP'D
A	PROPOSAL DRAWING	JULY04/13	L.C
B	CHANGE SHELL SHAPE ON THE TOP FACE	MAR06,2015	L.CHAN

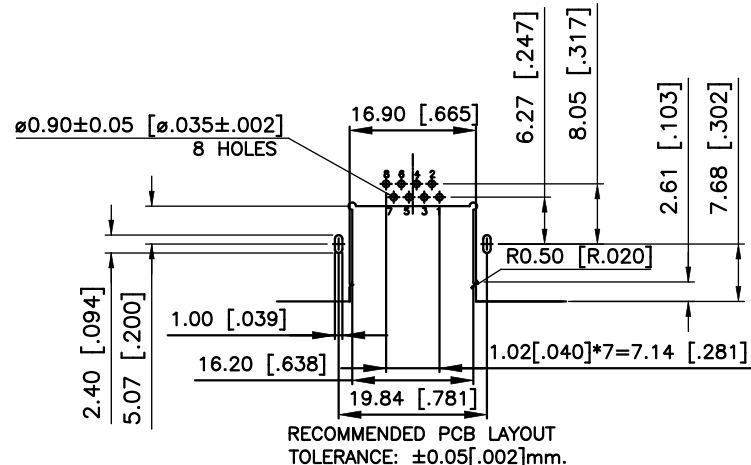


- NOTES:
ELECTRICAL:
1. VOLTAGE RATING : 125 VAC.
2. CURRENT RATING : 1.25 AMP.
3. INSULATING RESISTANCE : 500 MEGOHMS MINIMUM.
4. DIELECTRIC STRENGTH : 1000 VAC 60Hz, 1MIN.
5. CATEGORY 6 CHARACTERISTIC:

Frequency MHz	Near-End Crosstalk dB, MIN.	Return Loss dB, MIN.	Insertion loss dB, MAX.
1.0	75.0	30.0	0.1
4.0	75.0	30.0	0.1
8.0	75.0	30.0	0.1
10.0	74.0	30.0	0.1
16.0	69.9	30.0	0.1
20.0	68.0	30.0	0.1
25.0	66.0	30.0	0.1
31.25	64.1	30.0	0.11
62.5	58.1	28.1	0.16
100.0	54.0	24.0	0.20
200.0	48.0	18.0	0.28
250.0	46.0	16.0	0.32



- MECHANICAL:
1. SHIELD : STAINLESS STEEL, WITH TIN-DIP ON SOLDER TABS.
2. HOUSING : HIGH TEMP THERMOPLASTIC. UL 94V-0.
3. INSERT : HIGH TEMP THERMOPLASTIC UL 94V-0.
4. PCB : FR-4.
5. CONTACT : PHOSPHOR BRONZE.
SELECTIVE GOLD PLATING FOR MATING SURFACE, SEE AMPHENOL PART NUMBER FOR DETAIL.
50u" NICKEL UNDERPLATE
100u" MATTE TIN PLATING ON CONTACT SOLDER TAIL.
- ENVIRONMENTAL:
1. STORAGE : -40° TO +85°.
2. OPERATION : -40° TO +85°.
MATES WITH MODULAR PLUG CONFORMING TO TIA 1096.
RECOMMENDED SOLDER PROCESS: WAVE SOLDER, PEAK TEMPERATURE 260° FOR 5 SECOND MAXIMUM.



AMPHENOL PART NUMBER: RJE71-188-1X0X
GOLD PLATING OPTION _____ = OPTIONS (SEE BELOW TABLE 1)
1=6u" [0.15 MICRONS] GOLD PLATING
2=15u" [0.38 MICRONS] GOLD PLATING
3=30u" [0.76 MICRONS] GOLD PLATING
4=50u" [1.27 MICRONS] GOLD PLATING

TABLE 1

Part Number	Dimension	Value
RJE711881XX1	3.18	[.125]
RJE711881XX2	2.27	[.089]
RJE711881XX3	2.16	[.085]

AMPHENOL P/N: DIM A RECOMMEND PCB THICKNESS

UNLESS SPECIFIED OTHERWISE	DRAWN	HUGH WANG	JULY 04, 2013
PRIMARY UNITS MILLIMETERS	CHECKED	L.CHAN	JULY 04, 2013
SECONDARY INCHES	M.E. APP'D		
REFERENCE IN PARENTHESES	Q.A. APP'D		
GENERAL TOLERANCES FOR MM	DWG APP'D	ADRIAN.G	JULY 04, 2013
1 DECIMAL PLACE ±0.50	ENG. REL. NO.		
2 DECIMAL PLACE ±0.30	REF.		
3 DECIMAL PLACE ±0.10			
ANGULAR DEGREES ±3°			

Amphenol Canada Corp.
www.amphenolcanada.com

MODULAR JACK, SINGLE PORT, 8 POSITIONS, 8 CONTACTS, SHIELDED WITH TOP & SIDE TABS, WITHOUT LED, SINK PCB TYPE, TAB UP, CAT6

DWG NO. P-RJE71-188-1X0X REV B

CODE ID NO. 03554 DWG SIZE: C SCALE: N/A SHEET 1 OF 1

THIS DOCUMENT CONTAINS PROPRIETARY INFORMATION AND SUCH INFORMATION MAY NOT BE DISCLOSED TO OTHERS FOR ANY PURPOSE OR USED FOR MANUFACTURING PURPOSES WITHOUT WRITTEN PERMISSION FROM AMPHENOL CANADA CORP.