



Chipsmall Limited consists of a professional team with an average of over 10 year of expertise in the distribution of electronic components. Based in Hongkong, we have already established firm and mutual-benefit business relationships with customers from,Europe,America and south Asia,supplying obsolete and hard-to-find components to meet their specific needs.

With the principle of "Quality Parts,Customers Priority,Honest Operation,and Considerate Service",our business mainly focus on the distribution of electronic components. Line cards we deal with include Microchip,ALPS,ROHM,Xilinx,Pulse,ON,Everlight and Freescale. Main products comprise IC,Modules,Potentiometer,IC Socket,Relay,Connector.Our parts cover such applications as commercial,industrial, and automotives areas.

We are looking forward to setting up business relationship with you and hope to provide you with the best service and solution. Let us make a better world for our industry!



Contact us

Tel: +86-755-8981 8866 Fax: +86-755-8427 6832

Email & Skype: info@chipsmall.com Web: www.chipsmall.com

Address: A1208, Overseas Decoration Building, #122 Zhenhua RD., Futian, Shenzhen, China

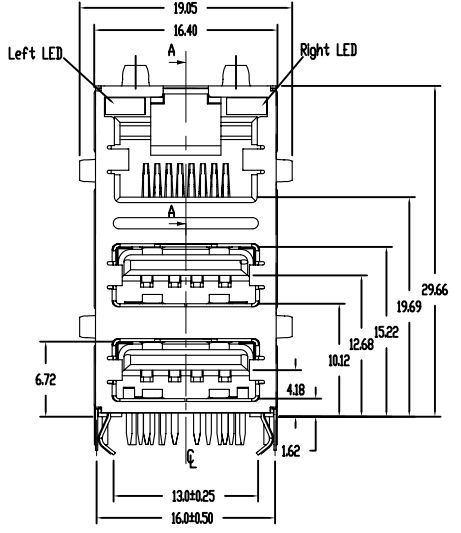
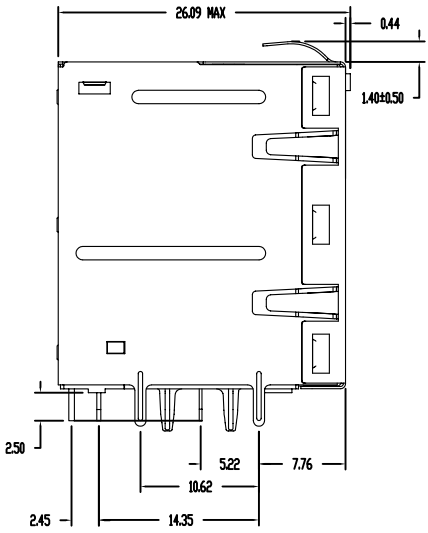
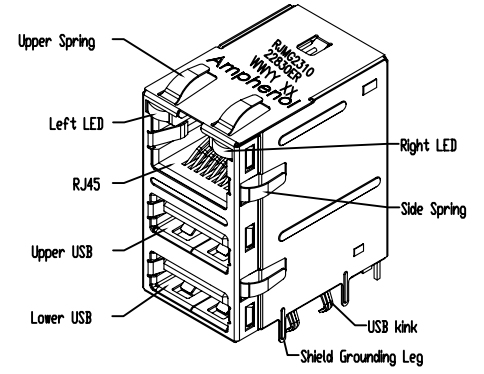
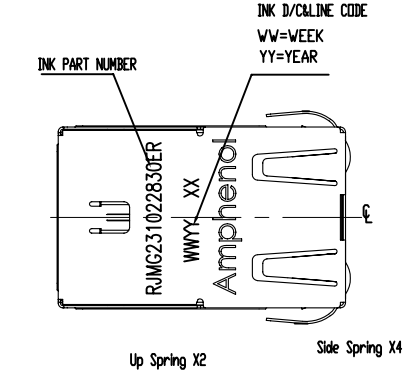


This document is the property of Amphenol Corporation and is delivered on the express condition that it is not to be disclosed, reproduced or used, in whole or in part, for manufacture or sale by anyone other than Amphenol Corporation without its prior consent, and that no right is granted to disclose or to use any information in this document.

CUSTOMER DRAWING

REVISIONS				
SYM	ECN No.	DESCRIPTION	DATE	APPROVED
B		RELEASE FOR IR PROCESS	Nov.12.08	Greg.L

ORIGINAL



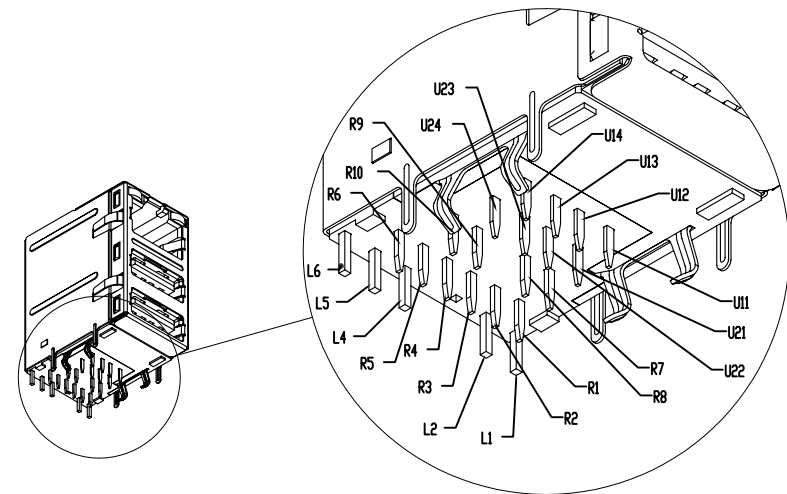
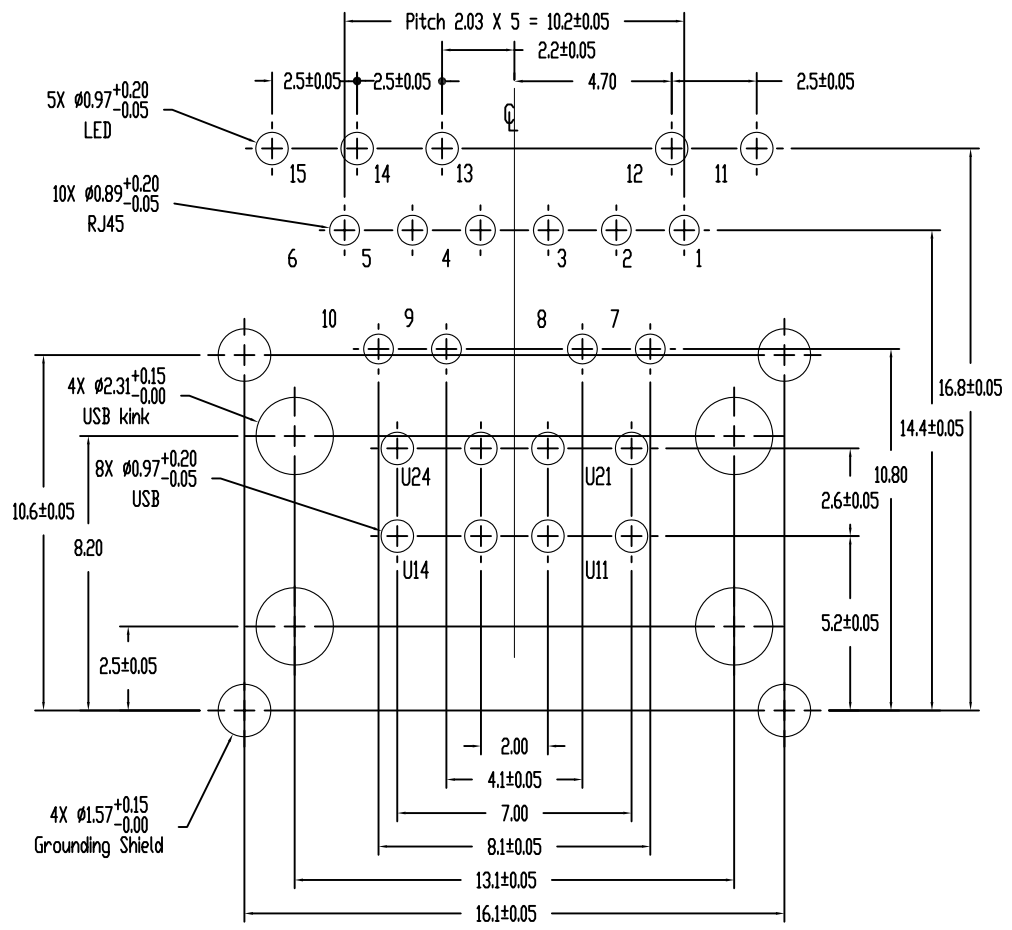
TOLERANCE m/m		APPROVALS		DATE	TITLE		<h1>Amphenol®</h1> <h2>Amphenol Corporation</h2>			
x.	±0.30	DRAWN		Nov.12.2007	RJmag 1000 Base-T RJ Over Dual USB					
x.x	±0.25	CHECKED		Nov.12.2007						
x.xx	±0.15	APPROVED		Nov.12.2007						
x.xxx	±0.08						SCALE	N.A.	SHEET	1 OF 4
ANGULAR	±2°						DRAWING NO.		REV.	
UNLESS OTHERWISE SPECIFIED				UNIT	SIZE	PART NO.	DRAWING NO.		REV.	
				MM	A3	RJM231022830ER	RJM231022830ER		B	

This document is the property of Amphenol Corporation and is delivered on the express condition that it is not to be disclosed, reproduced or used, in whole or in part, for manufacture or sale by anyone other than Amphenol Corporation without its prior consent, and that no right is granted to disclose or to use any information in this document.

CUSTOMER DRAWING

ORIGINAL

REVISIONS				
SYM	ECN No.	DESCRIPTION	DATE	APPROVED
B		RELEASE FOR IR PROCESS	Nov.12.08	Greg.L



Recommended PCB layout
component side view
PCB thickness : 1.6mm
The tolerance are ± 0.05mm

TOLERANCE m/m		APPROVALS	DATE	TITLE		Amphenol® Amphenol Corporation	
x.	±0.30	DRAWN Stone Lee	Nov.12.2007	RJmag 1000 Base-T RJ Over Dual USB		SCALE N.A. SHEET 2 OF 4	
x.x	±0.25						
x.xx	±0.15	CHECKED Jason Zhan	Nov.12.2007				
x.xxx	±0.08	APPROVED Greg.L	Nov.12.2007	DRAWING NO.		REV.	
ANGULAR	±2°			RJM231022830ER		B	
UNLESS OTHERWISE SPECIFIED		UNIT	MM	SIZE	A3	PART NO. RJM231022830ER	

This document is the property of Amphenol Corporation and is delivered on the express condition that it is not to be disclosed, reproduced or used, in whole or in part, for manufacture or sale by anyone other than Amphenol Corporation without its prior consent, and that no right is granted to disclose or to use any information in this document.

CUSTOMER DRAWING

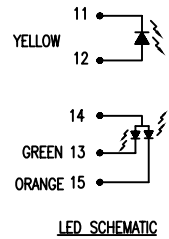
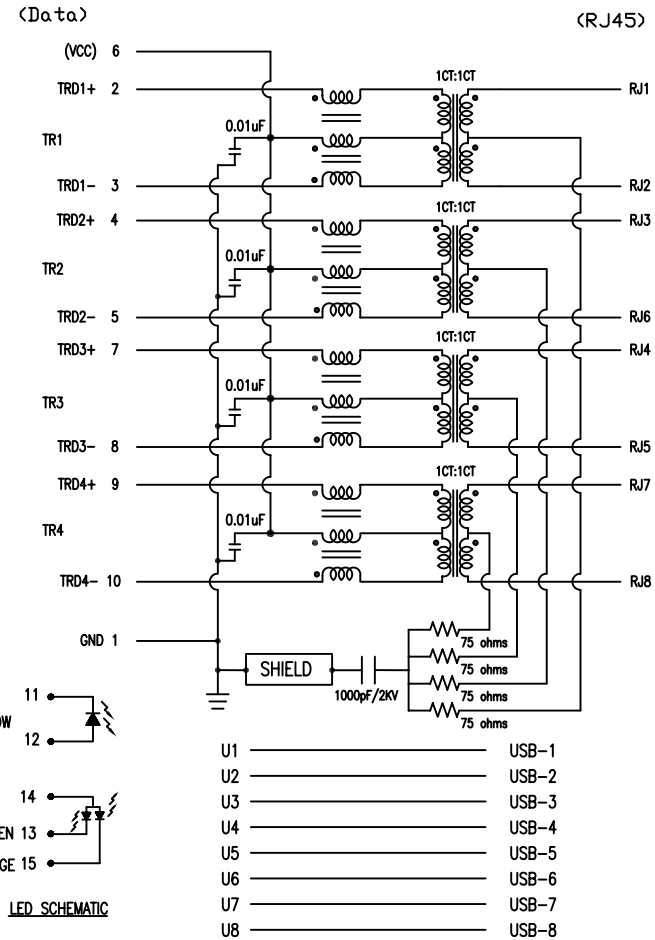
REVISIONS				
SYM	ECN No.	DESCRIPTION	DATE	APPROVED
B		RELEASE FOR IR PROCESS	Nov.12.08	Greg.L

Compliant with IEEE 802.3ab Standard

ORIGINAL

CONNECTOR PERFORMANCE ELECTRICAL SPECIFICATION(@25° C)

PARAMETER	LIMITS (MAX. OR MIN.)	FREQUENCY RANGE/ TEST CONDITIONS
INSERTION LOSS	-1.2dB MAX.	0.1-125 MHz
RETURN LOSS	-16dB MIN. -10+20 log(f/80MHz)dB MIN.	0.5-40 MHz 40-100 MHz
CM-CM REJECTION	-30dB MIN.	100KHz-100MHz
CM-DM REJECTION	-35dB MIN.	100KHz-100MHz
CROSSTALK	-35dB MIN.	100KHz-100MHz
HIPOT (Withstanding)	1.5kVrms/60Hz or 2.25VDC MIN.	60S
ISOLATION Resistance	1000M ohms MIN.	500VDC 60S
OCL	350uH MIN. From 0~70 degree	100KHz 100mV 8mA
TURN RATIO	1:1±5%	



LED PERFORMANCE:

	Activity	Link	
		Green (10Mbps)	Orange (100Mbps)
Display Color	Yellow	Green	Orange
Wavelength	590nm	565nm	605nm
Forward Current	30mA	30mA	30mA
Reverse Current	10uA	10uA	10uA
Forward Volt.Max	2.6VDC	2.6VDC	2.6VDC

TOLERANCE m/m	APPROVALS	DATE	TITLE	 Amphenol Corporation
x. ±0.30	DRAWN Stone Lee	Nov.12.2007	RJmag 1000 Base-T	
x.x ±0.25	CHECKED Jason Zhan	Nov.12.2007	RJ Over Dual USB	
x.xx ±0.15	APPROVED Greg.L	Nov.12.2007		
x.xxx ±0.08				
ANGULAR ±1°				
UNLESS OTHERWISE SPECIFIED	UNIT MM	SIZE A3	PART NO. RJMG231022830ER	SCALE N.A. SHEET 3 OF 4
			DRAWING NO. RJMG231022830ER	REV. B

This document is the property of Amphenol Corporation and is delivered on the express condition that it is not to be disclosed, reproduced or used, in whole or in part, for manufacture or sale by anyone other than Amphenol Corporation without its prior consent, and that no right is granted to disclose or to use any information in this document.

CUSTOMER DRAWING

REVISIONS				
SYM	ECN No.	DESCRIPTION	DATE	APPROVED
B		RELEASE FOR IR PROCESS	Nov.12.08	Greg.L

ORIGINAL

MATERIALS:

HOUSING DIELECTRIC MATERIAL:

POLYMER TYPE: HIGH TEMPERATURE GLASS-REINFORCED THERMOPLASTIC,
 COLOR: BLACK
 UL FLAMMABILITY RATING : UL 94V-0

CONTACTS (RJMAG):

BASE METAL ALLOY: PHOSPHOR BRONZE
 PLATING: 30u 'Au Min OVER 50u 'Ni Min UNDERPLATING
 100u 'Tin Min OVER 50u ' Ni MIN ON TAILS.

SHIELD:

STAINLESS STEEL , SUS304-1/2H. T=0.2MM , NO PLATING

MECHANICAL FEATURES:

SOLDERABILITY: MIL-STD-202,METHOD 208.

MATING/UNMATING FORCE:

USB PORT :

COMPLY WITH USB2.0 FOR ALL ELECTRICAL AND MECHANICAL CHARACTERISTICS
 INSERTION FORCE 3.5Kg MAX, PER USB2.0 SPEC
 WITHDRAWAL FORCE 1.0Kg MIN , PER USB2.0 SPEC
 DURABILITY: 5000 CYCLES MIN

RJ PORT :

MATING: 2.0Kg MAX , PER EIA-364-13B
 UNMATING FORCE: 2.0Kg MAX , PER EIA-364-13B
 PACKAGING: 40PCS/PLASTIC TRAY,4TRAYS/BOX
 COMPLY WITH FCC PART 68 SUBPART F.
 DURABILITY: 5000 CYCLES MIN

Environmental

OPERATING TEMPERATURE:-40°C TO +85°C.
 STORAGE TEMPERATURE:-40°C TO +100°C.
 WAVE SOLDERING TEMPERATURE: 260°C FOR 10 SECONDS MAX
 IR REFLOW TEMPERATURE: 245°C FOR 15 SECONDS MAX
 ALTITUDE OPERATING RANGE: SEA LEVEL TO 3000m

HUMIDITY: NO DAMAGE OR CHANGE THAT AFFECTS THE FUNCTION OR LOOKS OF MATED CONNECTORS

THERMAL SHOCK: SUBJECT MATED CONNECTORS TO 10 CYCLES BETWEEN -55°C AND 85°C,EVERY STEP TEMPERATURE 0.5h MIN

MECHANICAL SHOCK: THREE SHOCKS IN EACH DIRECTION SHALL BE APPLIED ALONG THREE MUTUALLY PERPENDICULAR AXES OF THE TEST SPECIMEN (18 SHOCKS)

REMARKED:

RJMG-2310 - 2 2- 8 3- 0 ER

LED1 (RIGHT SIDE)

2- Yellow

R: Rohs Compliant;

plating and packaging

E: Gold 30u Inches, Stainless steel shield, Tray

0: Standard;

3: 4 X 75R , 1000pF , 8 cores

LED2 (LEFT SIDE)

8: Bi-color Green/Orange(3 leds)



TOLERANCE m/m	APPROVALS	DATE	TITLE		Amphenol® Amphenol Corporation	
x. ±0.30	DRAWN Stone Lee	Nov.12.2007	RJmag 1000 Base-T RJ Over Dual USB		SCALE N.A. SHEET 4 OF 4	
x.x ±0.25	CHECKED Jason Zhan	Nov.12.2007				
x.xx ±0.15	APPROVED Greg.L	Nov.12.2007				
x.xxx ±0.08			UNIT	SIZE	PART NO.	DRAWING NO.
ANGULAR ±2°			MM	A3	RJMG231022830ER	RJMG231022830ER
UNLESS OTHERWISE SPECIFIED						REV. B