



Chipsmall Limited consists of a professional team with an average of over 10 year of expertise in the distribution of electronic components. Based in Hongkong, we have already established firm and mutual-benefit business relationships with customers from,Europe,America and south Asia,supplying obsolete and hard-to-find components to meet their specific needs.

With the principle of “Quality Parts,Customers Priority,Honest Operation,and Considerate Service”,our business mainly focus on the distribution of electronic components. Line cards we deal with include Microchip,ALPS,ROHM,Xilinx,Pulse,ON,Everlight and Freescale. Main products comprise IC,Modules,Potentiometer,IC Socket,Relay,Connector.Our parts cover such applications as commercial,industrial, and automotives areas.

We are looking forward to setting up business relationship with you and hope to provide you with the best service and solution. Let us make a better world for our industry!



## Contact us

Tel: +86-755-8981 8866 Fax: +86-755-8427 6832

Email & Skype: info@chipsmall.com Web: www.chipsmall.com

Address: A1208, Overseas Decoration Building, #122 Zhenhua RD., Futian, Shenzhen, China





**BOURNS®**

### Features

- Formerly J. W. Miller® model
- Current rating up to 200 mA
- Inductance range: 100  $\mu$ H to 15,000  $\mu$ H
- High Q
- RoHS compliant\*

### Applications

- DC/DC converters
- Power supplies
- Desktop notebooks
- Output chokes

## RL262 Series - Radial Lead RF Choke

### Electrical Specifications (@ 25 °C)

Part Number	Inductance ( $\mu$ H)	Tol.	Q (Min.)	Test Frequency		SRF (MHz) Typ.	DCR ( $\Omega$ ) Max.	I dc (mA)
				L	Q			
RL262-101J-RC	100	$\pm 5\%$	60	796 KHz	796 KHz	6.1	2.0	200
RL262-121J-RC	120	$\pm 5\%$	60	796 KHz	796 KHz	5.5	3.0	200
RL262-151J-RC	150	$\pm 5\%$	60	796 KHz	796 KHz	5.0	2.0	200
RL262-181J-RC	180	$\pm 5\%$	60	796 KHz	796 KHz	4.7	3.0	200
RL262-221J-RC	220	$\pm 5\%$	60	796 KHz	796 KHz	4.5	3.0	150
RL262-271J-RC	270	$\pm 5\%$	60	796 KHz	796 KHz	4.1	3.0	150
RL262-331J-RC	330	$\pm 5\%$	60	796 KHz	796 KHz	3.8	4.0	150
RL262-391J-RC	390	$\pm 5\%$	60	796 KHz	796 KHz	3.5	4.0	100
RL262-471J-RC	470	$\pm 5\%$	60	796 KHz	796 KHz	3.2	5.0	100
RL262-561J-RC	560	$\pm 5\%$	60	796 KHz	796 KHz	2.9	6.0	100
RL262-681J-RC	680	$\pm 5\%$	60	796 KHz	796 KHz	2.7	6.0	100
RL262-821J-RC	820	$\pm 5\%$	60	796 KHz	796 KHz	2.3	7.0	50
RL262-102J-RC	1000	$\pm 5\%$	80	252 KHz	252 KHz	2.1	9.0	50
RL262-122J-RC	1200	$\pm 5\%$	80	252 KHz	252 KHz	1.9	9.0	50
RL262-152J-RC	1500	$\pm 5\%$	80	252 KHz	252 KHz	1.8	11	50
RL262-182J-RC	1800	$\pm 5\%$	80	252 KHz	252 KHz	1.6	12	50
RL262-222J-RC	2200	$\pm 5\%$	80	252 KHz	252 KHz	1.5	14	50
RL262-272J-RC	2700	$\pm 5\%$	80	252 KHz	252 KHz	1.4	15	50
RL262-332J-RC	3300	$\pm 5\%$	80	252 KHz	252 KHz	0.9	25	40
RL262-392J-RC	3900	$\pm 5\%$	80	252 KHz	252 KHz	0.9	30	40
RL262-472J-RC	4700	$\pm 5\%$	80	252 KHz	252 KHz	0.8	32	40
RL262-562J-RC	5600	$\pm 5\%$	80	252 KHz	252 KHz	0.7	36	30
RL262-682J-RC	6800	$\pm 5\%$	80	252 KHz	252 KHz	0.7	40	30
RL262-822J-RC	8200	$\pm 5\%$	80	252 KHz	252 KHz	0.6	45	30
RL262-103J-RC	10,000	$\pm 5\%$	60	79.6 KHz	79.6 KHz	0.6	55	20
RL262-123J-RC	12,000	$\pm 5\%$	60	79.6 KHz	79.6 KHz	0.5	65	20
RL262-153J-RC	15,000	$\pm 5\%$	60	79.6 KHz	79.6 KHz	0.5	80	20

### General Specifications

Rated Current..... Inductance drop 10 %  
 Operating Temperature .....-55 °C to +105 °C  
 Storage Temperature .....-55 °C to +105 °C

### Materials

Core Material..... Ferrite  
 Wire ..... Enameled copper  
 Terminal Coating..... Sn

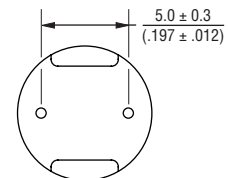
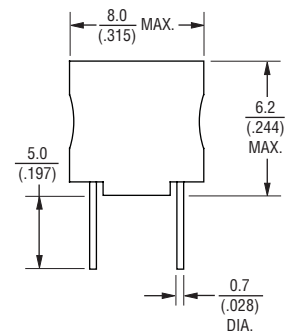
### Marking

..... Value code on side of inductor

### Packaging

Standard..... 100 pcs. per bag

### Product Dimensions



DIMENSIONS:  $\frac{\text{MM}}{\text{(INCHES)}}$

### How To Order

**RL262 - 102J - RC**

Model \_\_\_\_\_  
 Value/Tolerance Code (see table) \_\_\_\_\_  
 Compliance Code \_\_\_\_\_  
 RC = RoHS Compliant

Example:  
 RL262-102J-RC = 1000  $\mu$ H,  $\pm 5\%$

### Electrical Schematic

