



Chipsmall Limited consists of a professional team with an average of over 10 year of expertise in the distribution of electronic components. Based in Hongkong, we have already established firm and mutual-benefit business relationships with customers from,Europe,America and south Asia,supplying obsolete and hard-to-find components to meet their specific needs.

With the principle of “Quality Parts,Customers Priority,Honest Operation,and Considerate Service”,our business mainly focus on the distribution of electronic components. Line cards we deal with include Microchip,ALPS,ROHM,Xilinx,Pulse,ON,Everlight and Freescale. Main products comprise IC,Modules,Potentiometer,IC Socket,Relay,Connector.Our parts cover such applications as commercial,industrial, and automotives areas.

We are looking forward to setting up business relationship with you and hope to provide you with the best service and solution. Let us make a better world for our industry!



## Contact us

Tel: +86-755-8981 8866 Fax: +86-755-8427 6832

Email & Skype: info@chipsmall.com Web: www.chipsmall.com

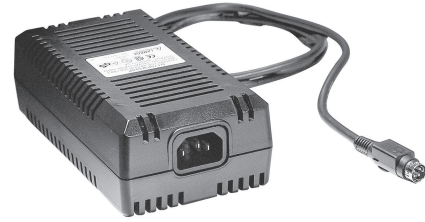
Address: A1208, Overseas Decoration Building, #122 Zhenhua RD., Futian, Shenzhen, China



## External Power Supplies

### Features

- ◆ Low Profile Light Weight
- ◆ Single and Multiple Outputs
- ◆ 2 Wire or 3 Wire Input Versions
- ◆ Wide Range Input
- ◆ Low Conducted EM



# Not recommended for new designs

Specifications			
Model		DT27	DT36PW
Maximum Output Power	W	27W	36W
Number of Outputs	-	2	1
Minimum Load	-	yes	no
Input Voltage Range	-	90~264VAC (47~63Hz)	
Efficiency	-	75% (typical)	
Inrush Current (@120VAC)	A	50A	50A
Size (L x W x H)	mm	106x60x30	106x60x30
Regulation (1)	-	Line: Typically 1%, Load: Typically 5%	
Ripple/Noise (1)	-	Typically 1%	
Overcurrent Protection	-	Short Circuit, auto restart	
Overvoltage Protection	-	+5V only	150% max
Hold Up Time (120VAC)	ms	10	10
Operating Temperature	°C	0~40°C	
Storage Temperature	°C	-40~70°C	-40~70°C
EMI	-	FCC Class B, EN55022B, (EN50081-1 DT15W, DT30U)	
Safety	-	UL60950-1, CSA 22.2 234, EN60950-1	
Input Connector	-	IEC320 C7	IEC320 C7
Output Cable	m	1.0	1.0
Output Connector ID x OD (1)	mm	-	2.1 x 5.5
Center Pin	-	-	Positive
Warranty	yrs	One year	

Specifications						
Model		DT45PW	DT60PWxxxP	DT60PW201	DT70PWxxxP	DT100PW
Maximum Output Power	W	45W	60W	60W	70W	100W
Number of Outputs	-	3	1	2	1	1
Minimum Load	-	yes	no	yes	no	no
Input Voltage Range	-	90~264VAC (47~63Hz)				90-132/180-264
Efficiency (typical)	-	75%	75%			
Inrush Current (@115VAC)	A	27A	27A			50A
Size (L x W x H)	mm	130x69x40	130x69x40	154x85x53		185x105x60
Regulation (1)	-	Line: Typically 1%, Load: Typically 5%				
Ripple/Noise (1)	-	Typically 1%				
Overcurrent Protection	-	Short Circuit, auto restart				Shutdown
Overvoltage Protection	-	+5V only	150% max	+5V only	+5V only	150% max
Hold Up Time (115VAC)	ms	10				
Operating Temperature	°C	0~40°C				
Storage Temperature	°C	-40~70°C				
EMI	-	FCC Class B, EN55022B				
Safety	-	UL60950-1, CSA 22.2 60950-1, EN60950-1				
Input Connector	-	IEC320 C13				
Output Cable (minimum)	m	1.0	1.0	1.0	1.0	1.0
Warranty	yrs	One year				

(1) See Lambda website for full specification

## 2 Output Module Codes

Model	Max Output (W)	Output	Voltage (V)	Min Load (A)	Max Output (A)	Peak Load (A)
<b>Single Output</b>						
DT36PW050P	20.0	V1	5	0	4	-
DT36PW090P	27.0	V1	9	0	3	-
DT36PW120P	30.0	V1	12	0	2.5	-
DT36PW150P	36.0	V1	15	0	2.4	-
DT36PW180P	36.0	V1	18	0	2	-
DT36PW240P	36.0	V1	24	0	1.5	-
DT60PW090P	40.5	V1	9	0	4.5	-
DT60PW120P	39.6	V1	12	0	3.3	-
DT60PW150P	60.0	V1	15	0	4	-
DT60PW180P	59.4	V1	18	0	3.3	-
DT60PW240P	60.0	V1	24	0	2.5	3
DT70PW050P	40.0	V1	5	0	8	10
DT70PW090P	50.4	V1	9	0	5.6	-
DT70PW120P	50.4	V1	12	0	4.2	-
DT70PW135P	70.0	V1	13.5	0	5.2	-
DT70PW150P	69.0	V1	15	0	4.6	-
DT70PW180P	70.2	V1	18	0	3.9	-
DT70PW240P	69.6	V1	24	0	2.9	-
DT100PW240P	100.0	V1	24	0	4.2	-
DT100PW480P	100.0	V1	48	0	2.1	-
<b>Dual Outputs</b>						
DT27PW201	27.0	V1	5.1	0.5	5	-
		V2	12	0.24	1.5	-
DT60PW201	60.0	V1	5.1	0.5	6	8
		V2	12	0.1	2	3
<b>Triple Outputs</b>						
DT45PW301	45.0	V1	5	0.5	5	-
		V2	12	0.3	1.5	2
		V3	-12	0	0.3	-

## Line Cord Accessories

DT27, DT36PW	RLMDT361800 US Plug to IEC320 C7 1.8m long
DT45, DT60, DT70, DT100	RLMDT701800 US Plug to IEC320 C13 1.8m long

For Additional Information, please visit  
[us.tdk-lambda.com/lp/products/dt-series.htm](http://us.tdk-lambda.com/lp/products/dt-series.htm)



# Not recommended for new designs