



Chipsmall Limited consists of a professional team with an average of over 10 year of expertise in the distribution of electronic components. Based in Hongkong, we have already established firm and mutual-benefit business relationships with customers from,Europe,America and south Asia,supplying obsolete and hard-to-find components to meet their specific needs.

With the principle of "Quality Parts,Customers Priority,Honest Operation,and Considerate Service",our business mainly focus on the distribution of electronic components. Line cards we deal with include Microchip,ALPS,ROHM,Xilinx,Pulse,ON,Everlight and Freescale. Main products comprise IC,Modules,Potentiometer,IC Socket,Relay,Connector.Our parts cover such applications as commercial,industrial, and automotives areas.

We are looking forward to setting up business relationship with you and hope to provide you with the best service and solution. Let us make a better world for our industry!



Contact us

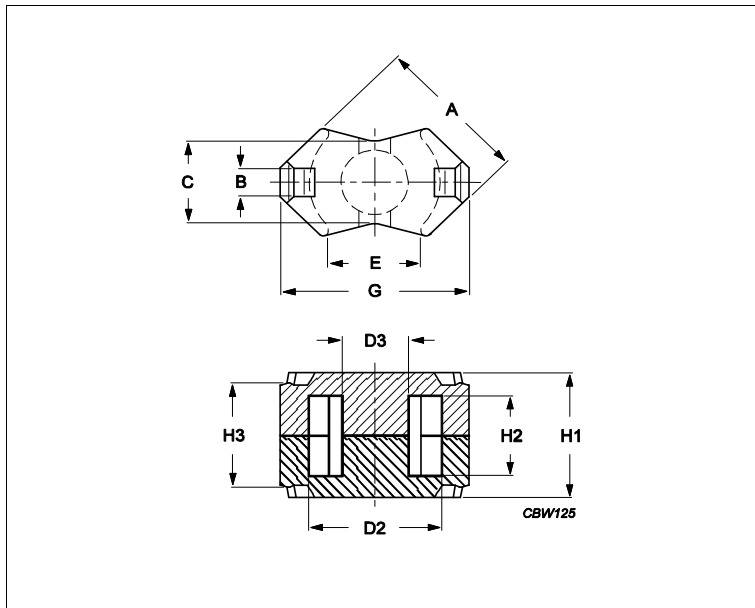
Tel: +86-755-8981 8866 Fax: +86-755-8427 6832

Email & Skype: info@chipsmall.com Web: www.chipsmall.com

Address: A1208, Overseas Decoration Building, #122 Zhenhua RD., Futian, Shenzhen, China



Core **RM6S/I**



Effective parameters			
	Parameter	Value	Unit
$\Sigma(I/A)$	core factor (C1)	0.784	mm ⁻¹
Ve	effective volume	1090	mm ³
Le	effective length	29.2	mm
Ae	effective area	37	mm ²
Amin	minimum area	31.2	mm ²
m	RM6S/I	≈ 5.5	g/set

Dimensions for product: RM6S/I

	Nom	Tol +	Tol -	Max	Min	Unit
A	14.70	0.00	0.60	14.70	14.10	mm
B	2.90	0.10	0.10	3.00	2.80	mm
C	8.20	0.00	0.40	8.20	7.80	mm
D2	12.40	0.50	0.00	12.90	12.40	mm
D3	6.40	0.00	0.20	6.40	6.20	mm
E					8.40	mm
G	17.90	0.00	0.70	17.90	17.20	mm
H1	12.40	0.10	0.10	12.50	12.30	mm
H2	8.00	0.40	0.00	8.40	8.00	mm
H3	10.35	0.25	0.25	10.60	10.10	mm

Inductance factor

Material	Value	Tol +	Tol -	Unit
3C94	2600	25%	25%	nH/turns ²
3C95	3000	25%	25%	nH/turns ²
3C96	2350	25%	25%	nH/turns ²
3D3	1050	25%	25%	nH/turns ²
3F36	1700	25%	25%	nH/turns ²
3F46	1100	25%	25%	nH/turns ²
3H3	2350	25%	25%	nH/turns ²

Power loss: 3C94

Measuring conditions			Max	Unit
100 kHz	200 mT	100 °C	0.540	W/set

Core **RM6S/I**

Power loss: 3C95

Measuring conditions			Max	Unit
100 kHz	200 mT	100 °C	0.520	W/set
100 kHz	200 mT	25 °C	0.570	W/set

Power loss: 3C96

Measuring conditions			Max	Unit
100 kHz	200 mT	100 °C	0.490	W/set
400 kHz	50 mT	100 °C	0.200	W/set

Power loss: 3F36

Measuring conditions			Max	Unit
500 kHz	50 mT	100 °C	0.160	W/set
500 kHz	100 mT	100 °C	1.300	W/set

Power loss: 3F46

Measuring conditions			Max	Unit
1000 kHz	50 mT	100 °C	0.440	W/set
3000 kHz	10 mT	100 °C	0.180	W/set

Bsat

Measuring conditions			Material	Min	Unit
25 kHz	250 A/m	100 °C	3C94	320	mT
25 kHz	250 A/m	100 °C	3C95	330	mT
25 kHz	250 A/m	100 °C	3C96	340	mT
25 kHz	250 A/m	100 °C	3F36	340	mT
25 kHz	250 A/m	100 °C	3F46	330	mT

Accessories

Ordering name	Description	Ordering code
CLI/P-RM6/I	Clip, with ground pin	432202134301
CLI-RM6/I	Clip	432202134951
CPV-RM6S/I-1S-8PD	Coil former, termoplastic, vertical	432202134042
CPV-RM6S/I-1S-8PD-TZ	Coil former, termoplastic, vertical	432202106641
CSV-RM6S/R-1S-4P-IZ	Coil former, termoset, vertical	432202106891
CSV-RM6S/R-2S-4P-IZ	Coil former, termoset, vertical	432202106901
CSV-RM6S-1S-4P-TZ	Coil former, termoset, vertical	432202106241
CSV-RM6S-1S-6P-G	Coil former, termoset, vertical	432202100991
CSV-RM6S-1S-6P-TZ	Coil former, termoset, vertical	432202106261
CSV-RM6S-1S-8P	Coil former, termoset, vertical	432202100411
CSV-RM6S-2S-4P-C	Coil former, termoset, vertical	432202107401
CSV-RM6S-2S-6P	Coil former, termoset, vertical	432202134601
CSV-S-RM6S-1S-8P	Coil former, termoset, vertical, SMD	432202102901
CSV-S-RM6S-1S-8P-B	Coil former, termoset, vertical, SMD	432202103411
CSV-S-RM6S-1S-8P-T	Coil former, termoset, vertical, SMD	432202103991