



Chipsmall Limited consists of a professional team with an average of over 10 year of expertise in the distribution of electronic components. Based in Hongkong, we have already established firm and mutual-benefit business relationships with customers from,Europe,America and south Asia,supplying obsolete and hard-to-find components to meet their specific needs.

With the principle of "Quality Parts,Customers Priority,Honest Operation,and Considerate Service",our business mainly focus on the distribution of electronic components. Line cards we deal with include Microchip,ALPS,ROHM,Xilinx,Pulse,ON,Everlight and Freescale. Main products comprise IC,Modules,Potentiometer,IC Socket,Relay,Connector.Our parts cover such applications as commercial,industrial, and automotives areas.

We are looking forward to setting up business relationship with you and hope to provide you with the best service and solution. Let us make a better world for our industry!



Contact us

Tel: +86-755-8981 8866 Fax: +86-755-8427 6832

Email & Skype: info@chipsmall.com Web: www.chipsmall.com

Address: A1208, Overseas Decoration Building, #122 Zhenhua RD., Futian, Shenzhen, China



LTE, 4G, BROADBAND

NOTE: All NMO mount antennas listed in this catalog section require the NMOHF-style (high frequency 27 MHz - 6 GHz) mount.

LTE, 4G BROADBAND WHIPS

Model	Type	Frequency (MHz)	Gain (dBd/dBi)	Max Height (In)	VSWR	Cable Assembly
EF2405NMO	Elevated Feed	2400-2500	2.9/5	16	<1.5:1	Order Separately
EF4905NMO	Elevated Feed	4900-5000	2.9/5	12	<1.5:1	Order Separately
NMO4E4900B	Elevated Feed	4900-5350	1.9/4	4.5	2:1	Order Separately
NMO4E5350B	Elevated Feed	5350-5925	4.9/4	4.5	2:1	Order Separately
NMO5E2400B	Collinear	2400-2500	2.95	8.5	1.5:1	Order Separately
R380500109	Dipole	2400-2500	0/2	3.5	1.5:1	Order Separately
R380500125	Dipole	2400-2500	0/2	2.5	1.5:1	Order Separately
SPDA17RP2400/5900	PCB	2400-2500 4900-5900	0/2 2.9/5	6 (Bent) 7 (Straight)	2:1	Order Separately
SPDA17806/2170LAR	PCB	806-960 1710-2170	0/5 0/5	6 (Bent) 7.5 (Straight)	2.5:1	Order Separately
SPDA24700/2700	PCB	698-960 1710-2170 2500-2700	0/0 0/0 0/0	9 (Straight)	2.5:1	Order Separately



EF



NMO5E



NMO4E



R380.500.125



R380.500.109



SPDA17RP2400/5900



SPDA24700/2700



SPDA17806/2170LAR

GPS LTE DIRECT MOUNTS

Model	Frequency (MHz)	Gain (dBd/dBi)	Polarization	VSWR	Mounting	Voltage	Size H x Dia (In)	Cable	Conn
GPSDM700/2500FFS	698-960/1710-2170/2300-2700	.9/3	Linear Vertical	2.0:1	3/4" Hole	3 or 5	3.5 x 4.16	17' RG-58	FME
	2400-2485/5150-5850	3.9/6	Linear Vertical					17' RG-58	FME
	1575.42	5 dBic	RHCP					17' RG-174	SMA



GPSDM700/2500

The most commonly used cable assembly/mount is the NMOKHFUD (27 MHz to 6 GHz) with 17' of UD (RG-58/U Dual Shield).

LTE, 4G, BROADBAND

NOTE: All NMO mount antennas listed in this catalog section require the NMOHF-style (high frequency 27 MHz - 6 GHz) mount.

700/800/900/1850 MHz LOW PROFILE

Model	Frequency (MHz)	Gain (dBd/dBi)	Mount	Size H x DIA (In)	Power Rating (Watts)	Color	Cable Assembly
LPT825/19NMOHF	Cellular: 806-960 PCS: 1710-2170 ISM: 2400	.8/3 .8/3 1.9/4	NMOHF	3 x 1.75	10	Black	Order Separately
LPT2400NMOHF	2400-2500	2.9/5	NMOHF	3 x 1.75	10	Black	Order Separately
SLPT698/2170NMOHF	LTE: 698-960 PCS: 1710-2170 ISM: 2400-2700	2.35/4.5 3.45/5.6 1.85/4	NMOHF	3 x 1.75	10	Black	Order Separately
SLPT2400NMOHF	2400-2500	2.15/4.3	NMOHF	2.6 x 1.5	10	Black	Order Separately
SLPT4900NMOHF	4900-5900	3.35/5.5	NMOHF	2.6 x 1.5	10	Black	Order Separately
SLPT2400/5900NMOHF	2400-2500 4900-5900	2.15/4.3 3.35/5.5	NMOHF	2.6 x 1.5	10	Black	Order Separately
LPT698/2170DM	LTE: 698-960 PCS: 1710-2170 ISM: 2400-2700	2.35/4.5 3.45/5.6 1.85/4	Direct (N Female)	3 x 1.75	10	Black	Order Separately
SLPT2400DMN	2400-2500	2.15/4.3	Direct (N Female)	2.6 x 1.5	10	Black	Order Separately
SLPT4900DMN	4900-5900	3.35/5.5	Direct (N Female)	2.6 x 1.5	10	Black	Order Separately
SLPT2400/5900DMN	2400-2500 4900-5900	2.15/4.3 3.35/5.5	Direct (N Female)	2.6 x 1.5	10	Black	Order Separately



LTE, 4G, BROADBAND STEALTH BLADES

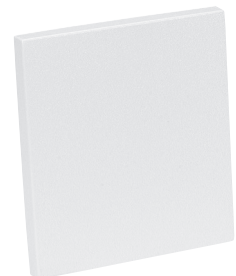
Stealth Blade antennas have a gain of 2.14 dBi, a maximum power of 3 Watts and linear polarization

Model	Frequency (MHz)	Type	Dimensions L x W (In)	Color	Coax	Connector
SB24003	2400-2500	Dipole	3 x .75	Black	3' RG-174	No Conn
SB24006	2400-2500	Dipole	3 x .75	Black	6' RG-174	No Conn
SB2400SMA3	2400-2500	Dipole	3 x .75	Black	3' RG-174	SMA
SB2400SMA6	2400-2500	Dipole	3 x .75	Black	6' RG-174	SMA
SB2400SMB3	2400-2500	Dipole	3 x .75	Black	3' RG-174	SMB
SB2400SMB6	2400-2500	Dipole	3 x .75	Black	6' RG-174	SMB
SB2400MMCX3	2400-2500	Dipole	3 x .75	Black	3' RG-174	MMCX
SB2400MMCX6	2400-2500	Dipole	3 x .75	Black	6' RG-174	MMCX



LTE, 4G, BROADBAND PANELS

Model	Frequency (MHz)	Gain (dBd/dBi)	VSWR	Size L x W x D (In)	Polarization	Connector
PA2101850N	1850-1990	7.9/10	2:1	9.5 x 4 x .8	Vertical	N Female
PA4142400N	2400-2485	12.5/14.2	1.5:1	9.5 x .8 x 8.6	Vertical	N Female



NOTE: Antennas are not to scale

1 800 ANTENNA (268-3662)

LTE, 4G, BROADBAND

LTE, 4G, BROADBAND RADOME OMNIS

NOTE: Radome Omni antennas have the following specifications:

Radome Enclosure: Pultruded Fiberglass (UV Protected)

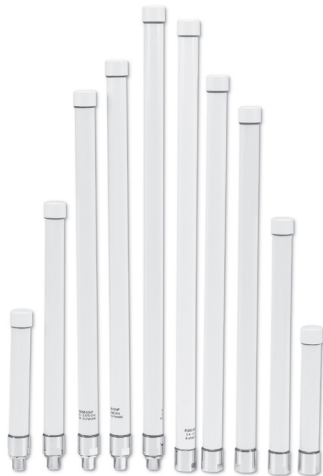
VSWR: 2.0:1

Power Rating: 20 Watts

Ingress Protection: IP67

Polarization: Vertical

Suggested mounting brackets for N Female connectors are FB2BRACKET or FB3BRACKET. See Page 45 for FB brackets.



Single Band Radome Omnis



RO806/2170NM

Model	Frequency (MHz)	Gain (dBd/dBi)	Length (In)	Connector
RO2404NM	2400-2500	1.9/4	11.5	N Male
RO2406NF	2400-2500	3.9/6	11.5	N Female
RO2406NM	2400-2500	3.9/6	11.5	N Male
RO2408NF	2400-2500	5.9/8	20	N Female
RO2408NM	2400-2500	5.9/8	20	N Male
RO2408NFD (downtilt)	2400-2500	5.9/8	20	N Female
RO2408NMD (downtilt)	2400-2500	5.9/8	20	N Male
RO2408NFU (uptilt)	2400-2500	5.9/8	20	N Female
RO2408NMU (uptilt)	2400-2500	5.9/8	20	N Male
RO4910NF	4940-4990	7.8/10	18	N Female
RO4910NM	4940-4990	7.8/10	18	N Male
RO5206NF	5150-5350	3.9/6	6.75	N Female
RO5410NF	5470-5725	7.8/10	16.5	N Female
RO5210NF	5150-5350	7.8/10	16.5	N Female
RO5210NM	5150-5350	7.8/10	16.5	N Male
RO5410NM	5470-5725	7.8/10	16.5	N Male
RO5805NF	5150-5825	2.8/5	6.75	N Female
RO5805NM	5150-5825	2.8/5	6.75	N Male
RO5806NF	5725-5875	3.9/6	6.75	N Female
RO5810NF	5725-5875	7.8/10	16.5	N Female
RO5810NM	5725-5875	7.8/10	16.5	N Male
RO806/2170NM	806-960 1710-2170	1.9/4 1.9/4	16.5	N Male