



Chipsmall Limited consists of a professional team with an average of over 10 year of expertise in the distribution of electronic components. Based in Hongkong, we have already established firm and mutual-benefit business relationships with customers from,Europe,America and south Asia,supplying obsolete and hard-to-find components to meet their specific needs.

With the principle of "Quality Parts,Customers Priority,Honest Operation,and Considerate Service",our business mainly focus on the distribution of electronic components. Line cards we deal with include Microchip,ALPS,ROHM,Xilinx,Pulse,ON,Everlight and Freescale. Main products comprise IC,Modules,Potentiometer,IC Socket,Relay,Connector.Our parts cover such applications as commercial,industrial, and automotives areas.

We are looking forward to setting up business relationship with you and hope to provide you with the best service and solution. Let us make a better world for our industry!



Contact us

Tel: +86-755-8981 8866 Fax: +86-755-8427 6832

Email & Skype: info@chipsmall.com Web: www.chipsmall.com

Address: A1208, Overseas Decoration Building, #122 Zhenhua RD., Futian, Shenzhen, China

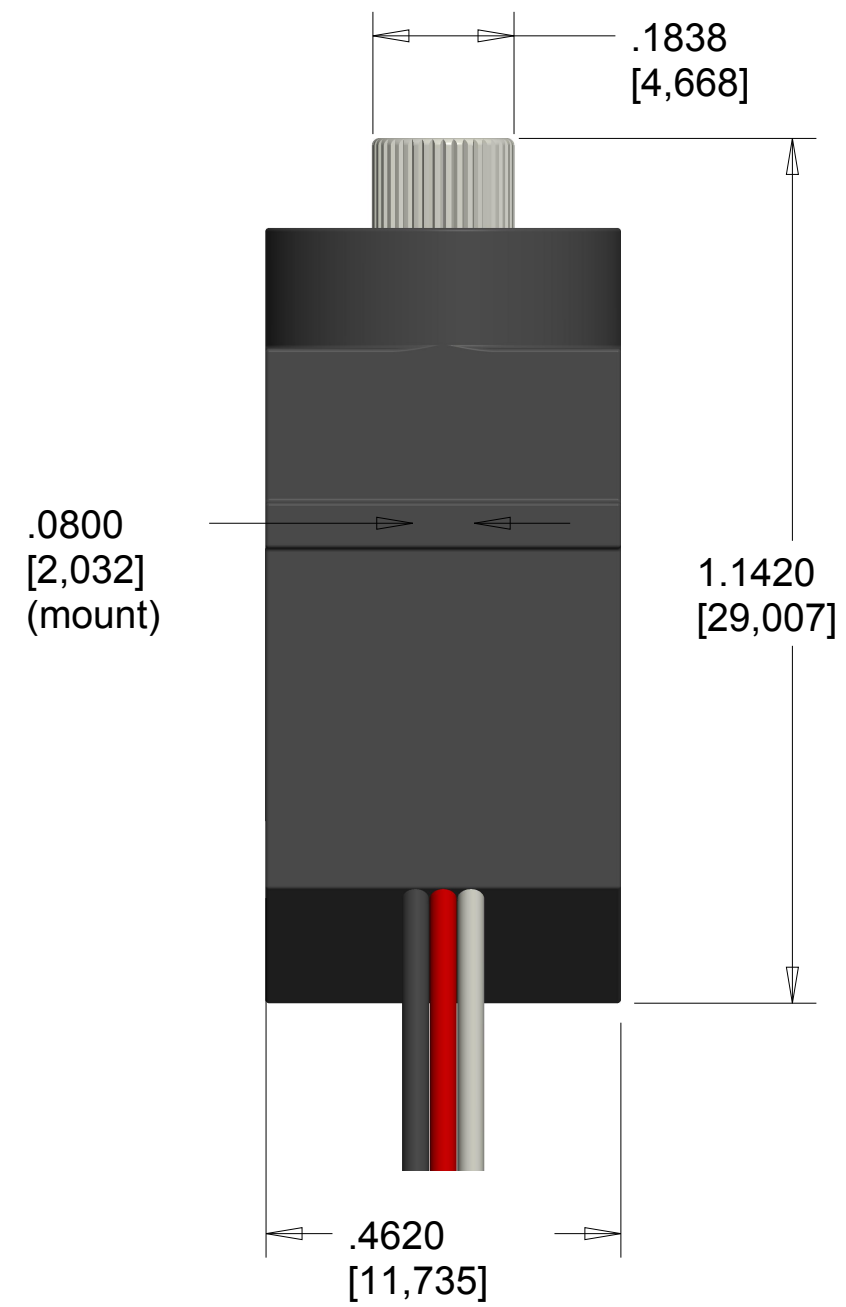
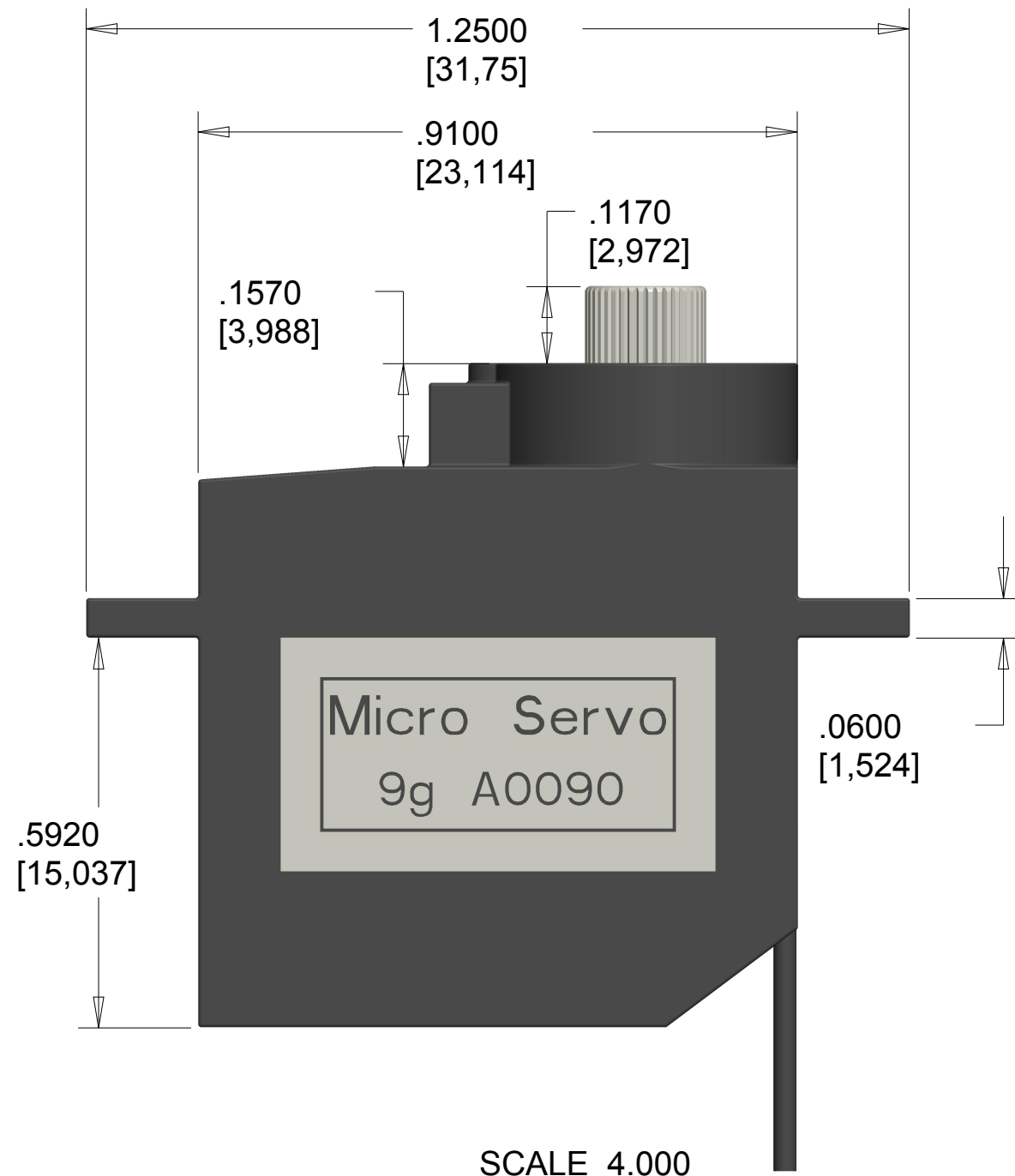
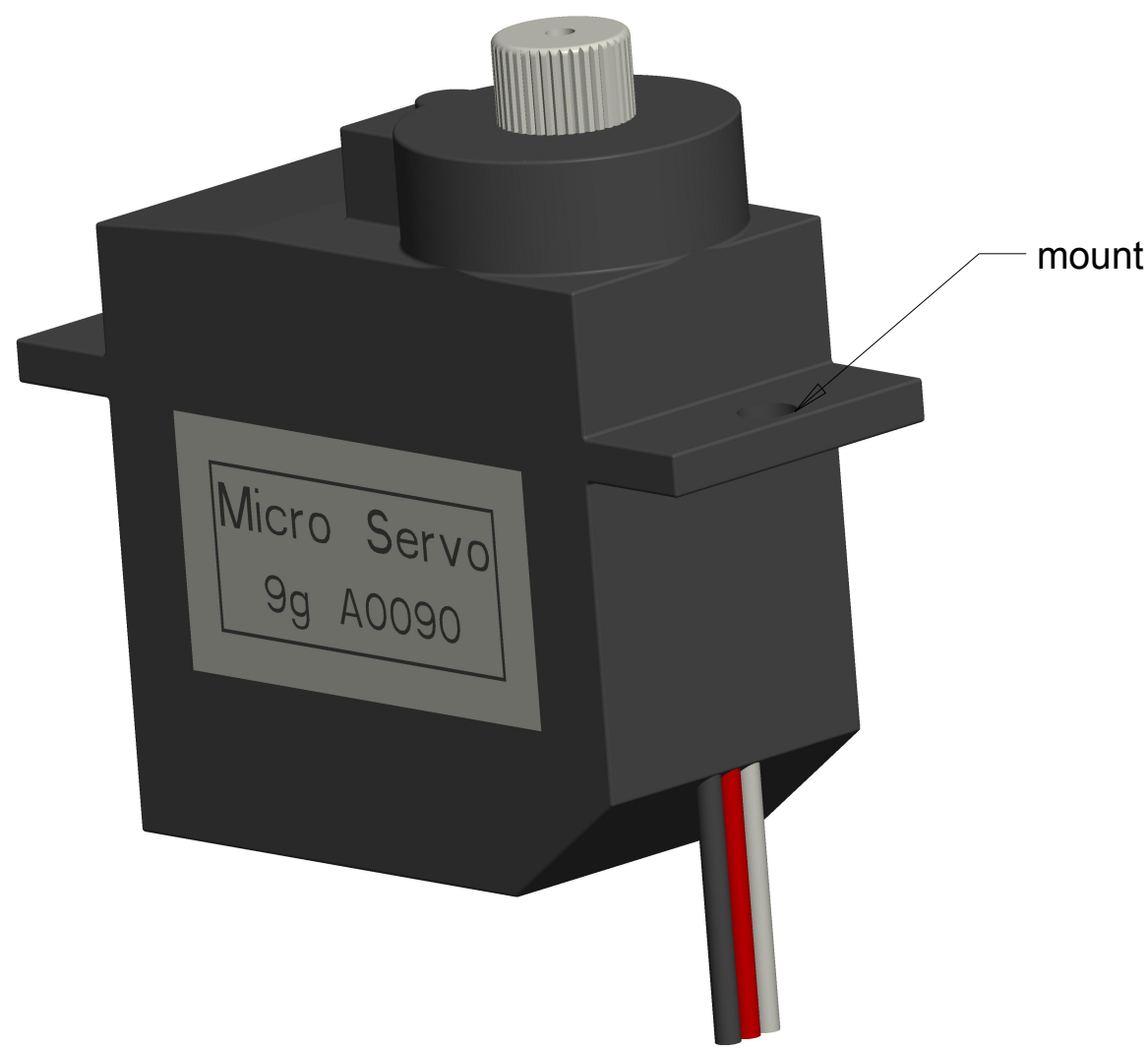


4

3

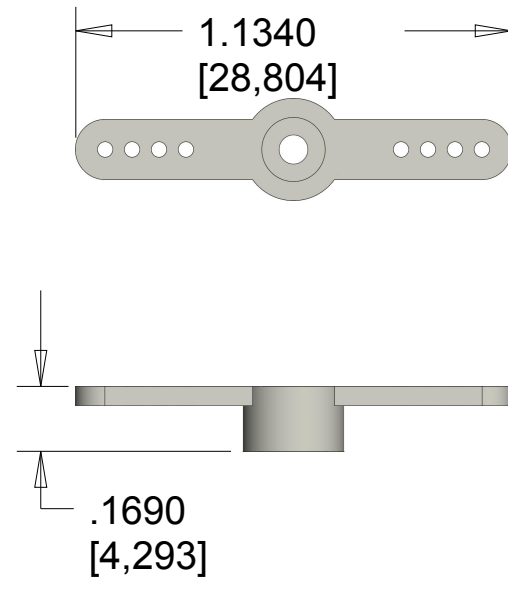
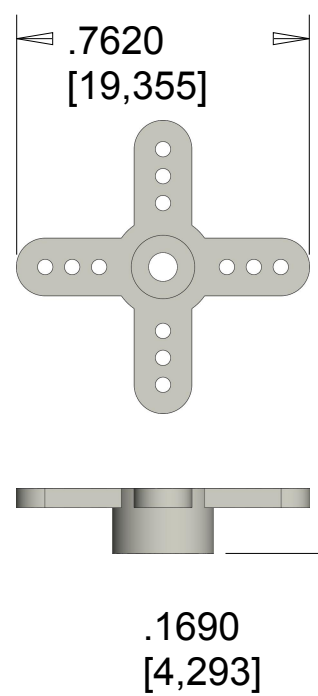
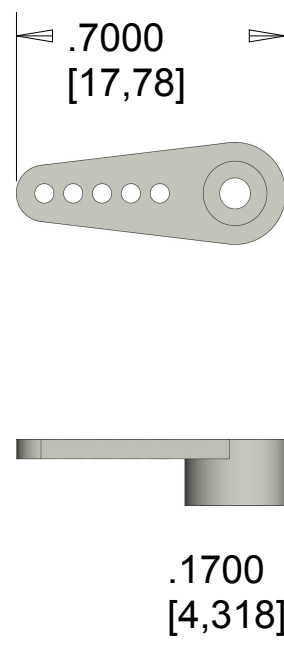
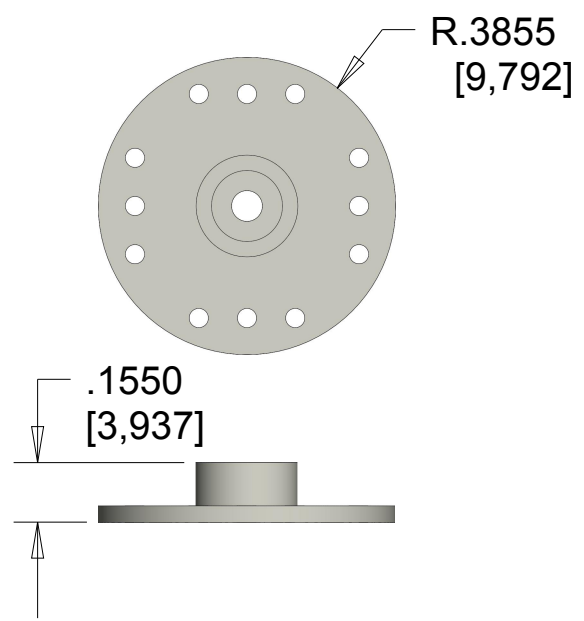
2

1



SCALE 2.000

SCALE 4.000



- Features —
- Voltage: 4.8-6.0 Volts
 - Torque: 16.6/20.8 oz-in. (4.8/6.0V)
 - Speed: 0.15/0.10 sec/60° (4.8/6.0V)
 - Rotation: ~160°
 - Single Top Ball Bearing
 - Nylon Gears
 - 3-Pole Ferrite Motor

- Includes —
- 1x Micro Servo
 - 1x Single Arm Micro Horn
 - 1x Double Arm Micro Horn
 - 1x Four Point Micro Horn
 - 1x Circle Micro Horn
 - 2x 2x8mm Phillips Screw

This servo is rated for 180° rotation, but in actuality it only hits ~160° NOTES:	MATERIAL:	Plastic + Metal	MODEL NAME:	Servo - Small
	Here is a simple, low-cost, high quality servo for all your mechatronic needs. This servo is very similar in size and specifications to the Hitec HS-55. This little guy is able to take in 6 volts and deliver 20.8 oz-in. of maximum torque at 0.10 sec/60° This small servo comes with a standard 3 pin power and control cable.		https://www.sparkfun.com/products/9065	
	DESCRIPTION:		ROB-09065	
	DRAWN BY:	Paul Smith	PAGE SIZE C 22 x 17 INCH	
DATE:	16 July 2013	SCALE: variable UNITS: inch [mm]		
CAD APPLICATION: Creo Parametric 2.0		VER:	1.0	SHEET 1 / 1

4

3

2

1