



Chipsmall Limited consists of a professional team with an average of over 10 year of expertise in the distribution of electronic components. Based in Hongkong, we have already established firm and mutual-benefit business relationships with customers from,Europe,America and south Asia,supplying obsolete and hard-to-find components to meet their specific needs.

With the principle of "Quality Parts,Customers Priority,Honest Operation,and Considerate Service",our business mainly focus on the distribution of electronic components. Line cards we deal with include Microchip,ALPS,ROHM,Xilinx,Pulse,ON,Everlight and Freescale. Main products comprise IC,Modules,Potentiometer,IC Socket,Relay,Connector.Our parts cover such applications as commercial,industrial, and automotives areas.

We are looking forward to setting up business relationship with you and hope to provide you with the best service and solution. Let us make a better world for our industry!



Contact us

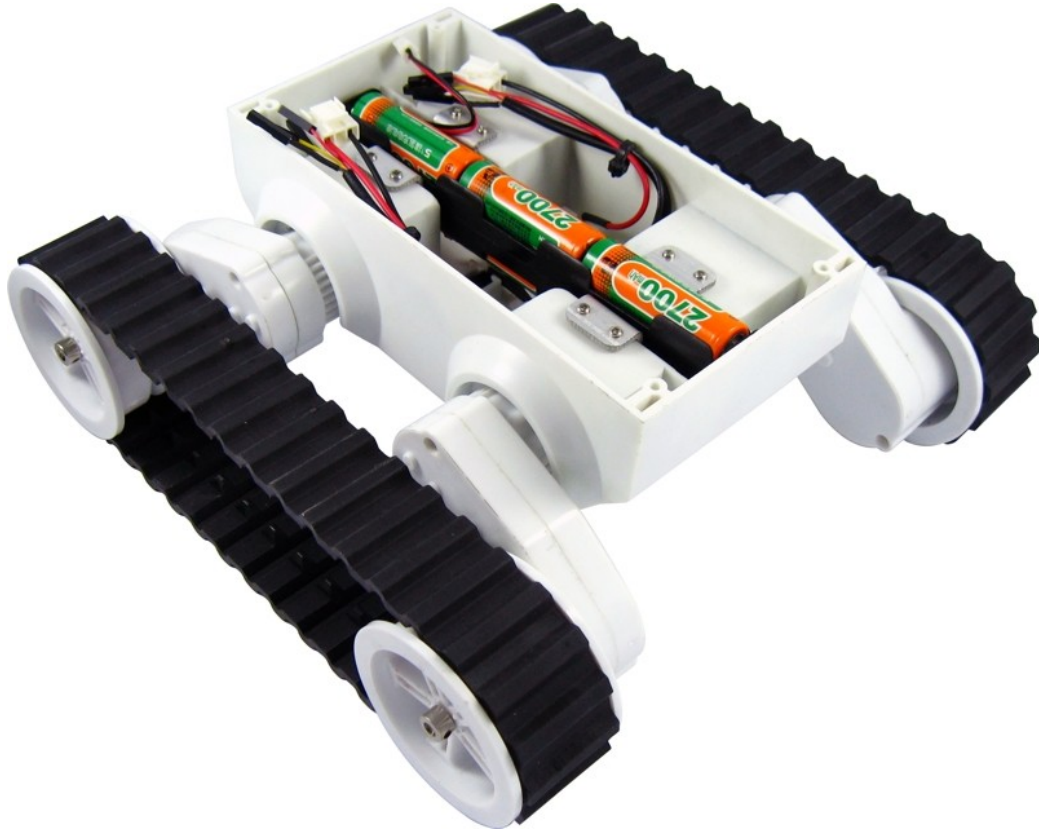
Tel: +86-755-8981 8866 Fax: +86-755-8427 6832

Email & Skype: info@chipsmall.com Web: www.chipsmall.com

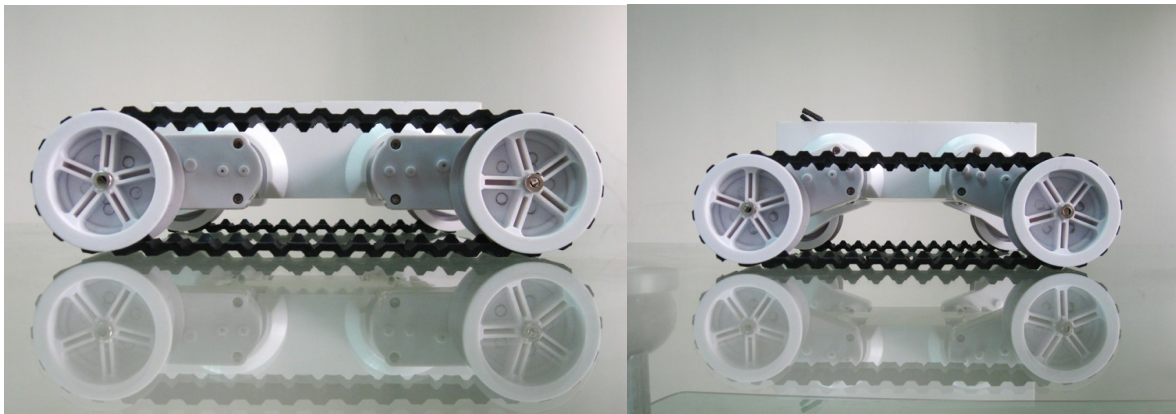
Address: A1208, Overseas Decoration Building, #122 Zhenhua RD., Futian, Shenzhen, China



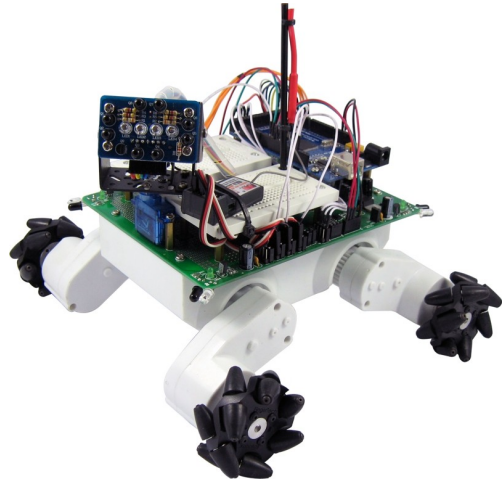
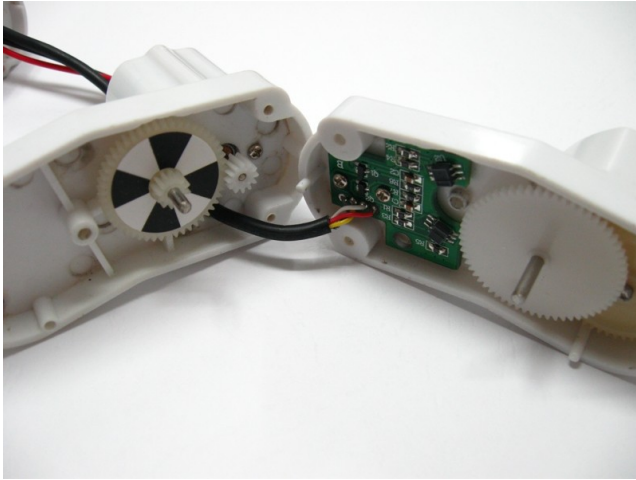
ROVER 5



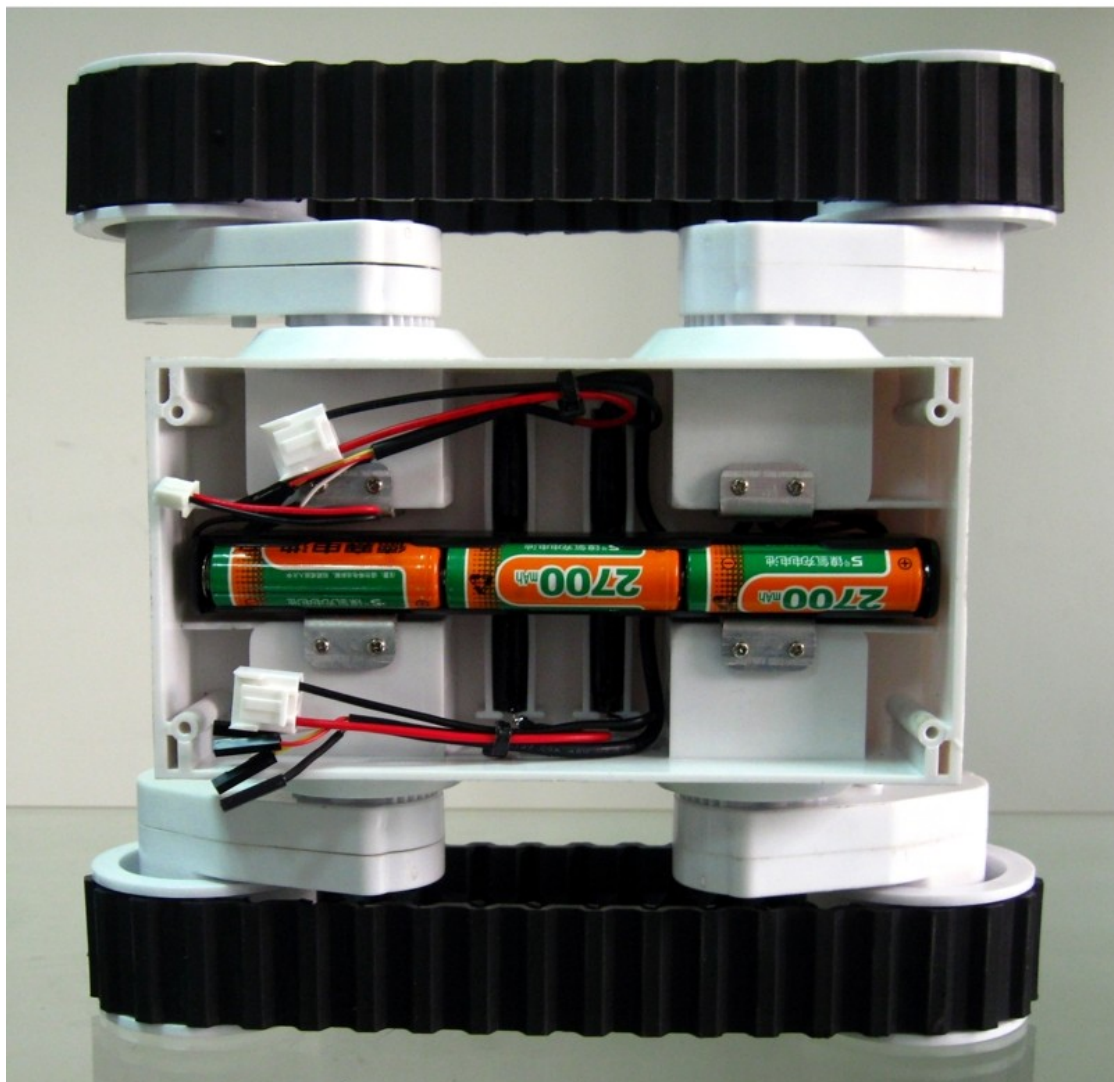
Rover 5 is a new breed of tracked robot chassis designed specifically for students and hobbyist. Unlike conventional tracked chassis's the clearance can be adjusted by rotating the gearboxes in 5-degree increments. "Stretchy" rubber treads maintain tension as the clearance is raised.



Each gearbox has an 87:1 ratio includes an optical quadrature encoder that gives 1000 pulses over 3 revolutions of the output shaft. The chassis can be upgraded to include four motors and encoders making it ideal for mecanum wheels.



Inside of the chassis are 4 noise suppression coils at the bottom and a battery holder that accepts 6x AA batteries. It is recommended to use NiMh batteries as they last longer and have a higher current output than Alkaline batteries.

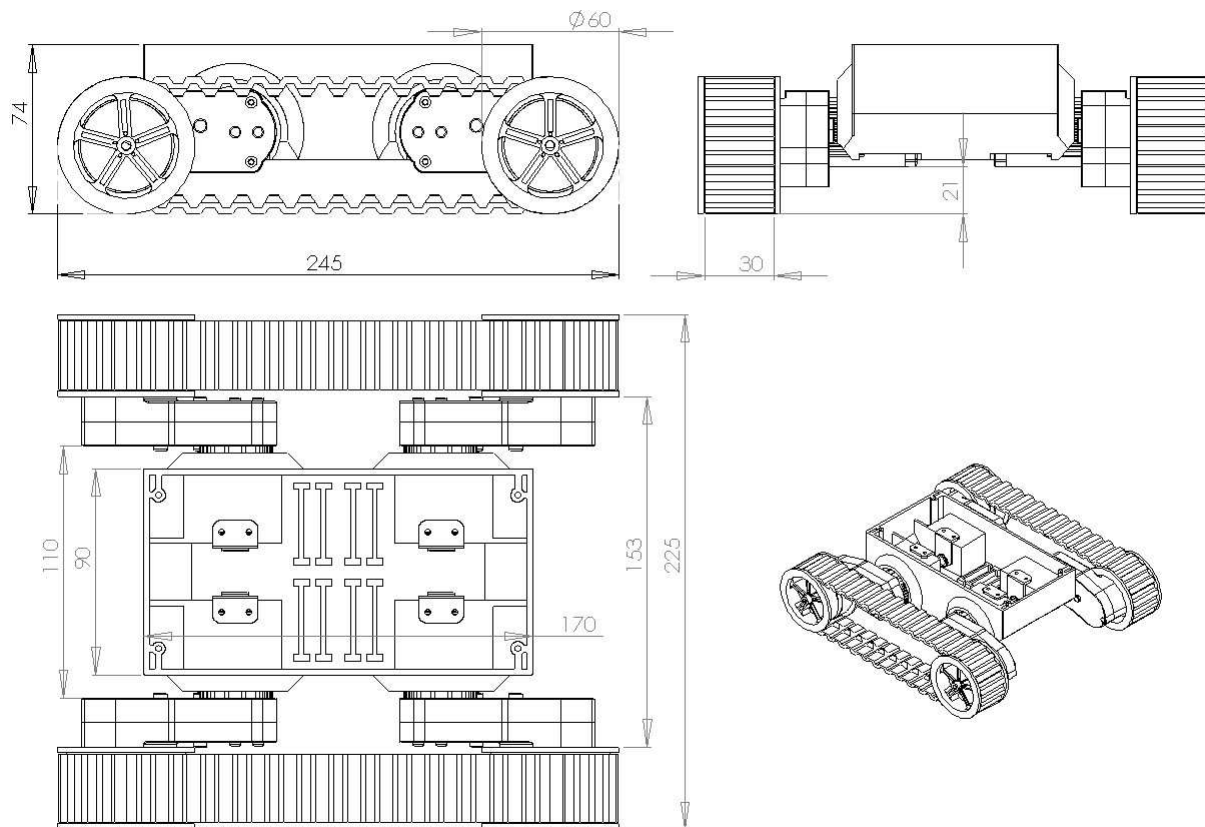


Video of the chassis in action can be seen here:

Video indoors autonomous: http://v.youku.com/v_show/id_XMjE5NzkwODA0.html

Video outdoors RC mode: http://v.youku.com/v_show/id_XMjIwMTkxODk2.html

Dimensions:



Specifications:

Motor rated voltage: 7.2V

Motor stall current: 2.5A

Output shaft stall torque: 10Kg/cm

Gearbox ratio: 86.8:1

Encoder type: Quadrature

Encoder resolution: 1000 state changes per 3 wheel rotations

Speed: 1Km/hr